

DAILY EAST OREGONIAN, PENDLETON, OREGON, SATURDAY EVENING, JUNE 24, 1922.

ROAD VIA IRRIGON TO SEATTLE IS GOOD SAY LOCAL MEN

ROAD IS NEARLY ALL PAVED OR GRAVELED; 20 MILES DIRT ROAD

Party Interested in Camp- grounds at Seattle; Hot and Cold Water With Baths.

Four Pendleton men chose a route to Seattle recently which cut off quite a lot of distance from the trip as it is ordinarily made. It is the usual thing to go to Seattle by way of Walla Walla or Portland, but Rudy Tanner, Lester Hamley, Fred Donbert and Fred Brown went to Irrigon, thence across the Columbia to Patterson, thence to Prosser, Yakima and on into Seattle.

"I was agreeably surprised at the good roads we encountered over this route," Tanner said. "There is a stretch of about 20 miles across the Horse Heaven country in Washington which is of dirt, but all of the remainder of the way boasts either paved or graveled highways. The Horse Heaven road permitted a speed of 20 miles an hour."

The members of the party were interested in the new campgrounds at Seattle. The accommodations include hot and cold water with baths, a community house, reading room and stoves for cooking under a central room. The Everett, Washington, camp is also attractive, they report.

The quartet spent three days at Vancouver, B. C., on their trip. They were gone eight days and covered 1200 miles on the trip.

To cut timber to be manufactured into handles as well as to take care of the overflow business of the Eugene plant, the Eugene Handle company has purchased a sawmill at Peoria in Linn county and has already taken over the plant.

ELLIS-SCHILLER HAVE SOLD A DODGE A DAY DURING PRESENT MONTH

The ambition of Ellis-Schiller to sell a Dodge a day has been realized so far during the month of June, according to the sales record for the company up until the middle of this week. When business was done for the day Wednesday evening, June 21 the firm had sold 21 new Dodges. They declare that they could have sold more if they could have got the cars.

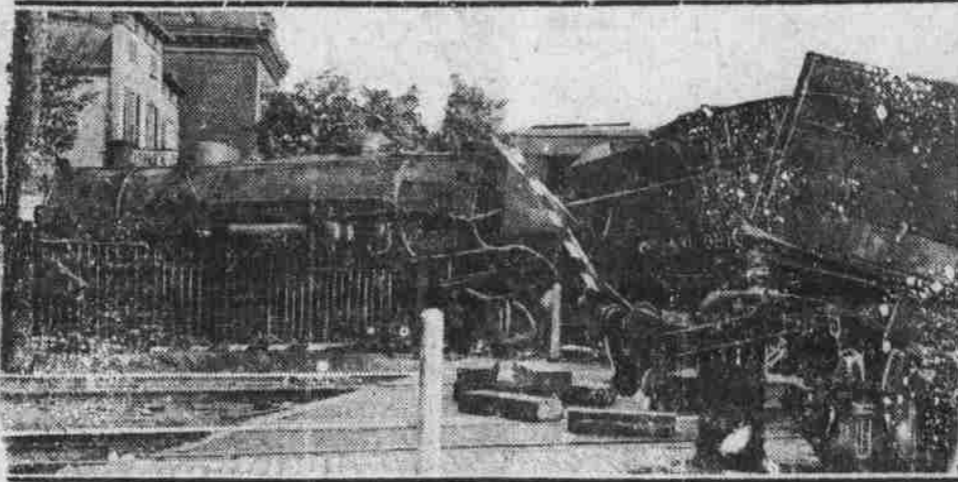
Two screened-in cars, two sedans, 13 touring cars and one roadster are included in the 21 sales for the month. The list of buyers to the present includes Henry Struve, Gordon Mettie, Fayette Mettie, G. M. Butler, J. E. Plinson, L. Eddie, Frank Curl, Hobart Peringer, Jack Sherman, Ralph Wallan, Earl Sawyer, A. Pat-tawa, Will Price, Cleo Straughn, Tom Barclay, Cap Peterson, A. Thraw, Lawrence Llewellyn, J. Stone-breaker, S. Worsights and Douglas Crawley.

DODGE BROTHERS BUILD NEW COUPE

Behind the simple phraseology of an announcement which Dodge Brothers, Detroit automobile manufacturers, are publishing today in every important city and town in America, lies the story of a new achievement in automobile development. "Dodge Brothers announce a business coupe; conservative changes in the body design of all other types," the advertisement reads.

The business coupe is the first all-steel closed car ever marketed. In this respect it takes a new and distinctive place in automotive history, for it involves an entirely unique principle of coupe body construction. The steel body not only practically eliminates the problem of limited production, due to the tedious and costly individual workmanship required on wood bod-

hen Death and Destruction Stopped Two Feet Away



"Battleship" locomotive and two coal cars. Spreading rails. Dayton, O. Engine stopped two feet from the room where J. B. Cooper and family were sitting.

ies, but also enables the manufacturer to give the coupe the same lustrous baked enamel finish which has already contributed so much to the reputation of Dodge Brothers open cars. This process in itself will also facilitate quantity production, as an enormous amount of time was consumed heretofore in applying the numerous coats of paint required on wood.

Naturally, these are important factors in the determination of the selling price, resulting in economies which Dodge Brothers are passing directly to the purchaser. "Wood is practically eliminated from the construction of this car," said the Ellis-Schiller Co., the local dealers. "Even the framework and panels are of steel, and the natural result is a lighter, quieter and more durable car. Steel prolongs life and reduces the possibility of squeaks and rattles."

"The business men of America have been expecting such a coupe and Dodge Brothers have given it to them. "It is in reality a coupe at a roadster price. While it is easily attractive enough for any use, it is particularly designed for the business man who needs the comfort and protection of a closed car in his work but who can't get along without a fair of the luxuries which, in the past, have made the closed car so expensive. The business coupe is built inside and out to withstand the wear and tear of every day use—and yet it retains the same lightness and beauty of line which everyone is accustomed to look for in Dodge Brothers closed cars. It lacks only what I might term the depreciation liabilities of the more expensive coupe. It is upholstered in genuine leather, has a wide, comfortable straight seat, is equipped with cord tires, heater, dome light, windshield cleaner and adjustments for raising and lowering windows. The doors are unusually wide and are fitted with new easy closing Yale locks, there is more than the usual amount of leg room and convenient and spacious luggage compartments are provided. Doctors, real estate men and salesmen of all kinds will find it just the car they need. We already have good indications of a tremendous demand."

"The change of design in the other Dodge Brothers cars indicates that while Dodge Brothers have always adhered closely to the practical they are also progressive and abreast of the time. It is Dodge Brothers policy to make improvements year after year and month after month and this is simply another step forward."

HOW THE TENANTS WON.

LONDON, June 24.—(U. P.)—Tenants in a large apartment house in the neighborhood of Piccadilly objected to the playing of a bassoon by Ermindo Bompas, an Italian. Bompas, who had a host of witnesses, played them into court on the offending instrument. The judge remonstrated. "Enough of this buffoonery," he ordered. Said Bompas: "Me no makes da buffoonery—makes da bassoon-er." The tenants won.

OREGON ROADS

Reported by
State Highway Commission.

Pacific Highway

Portland-Oregon City: Willamette River bridge at Oregon City closed for construction. Traffic from Portland for Oregon City and points south should take east side route via Mill-waukee or 32nd Street, both of which are paved throughout. Traffic for Oregon and west Linn should take west side route to Bolton and gravelled from there to West Linn.

Oregon City-Canby-Salem: Paved. Salem-Jefferson-Albany: Paved. Albany-Corvallis-Junction City-Eugene: Gravelled Albany to Corvallis. Junction to Eugene.

Eugene-Drain: Paved most of the way. Short detour arising from concrete pavement south of Goshen. Turn left on Cloverdale. Road for about 1500 feet, then south along a lane about 1900 feet, returning to highway about 3.4 mile south of Goshen. Two short detours are necessary at Canas Swale; balance of highway to Drain is paved with the exception of a short section at Cottage Grove.

Drain-Roseburg: Highway open and paved or macadamized to Wilbur. Detour from highway just south of Wilbur via Garden Valley to Eden-bower. Detour traveled throughout but first 5 miles are narrow and requires careful driving. Return to highway at Edensbower 1.2 mile north of Roseburg. Concrete paving operations now going on between Wilbur and Roseburg. Section between detour limits will not be open after working hours.

Roseburg-Myrle Creek: Paved. Myrtle Creek-Canyonville: Construction under way. Traffic detoured via Riddle during working hours, 7:30 a. m. to 5:30 p. m. except Sunday. Detour routed on south end.

Canyonville-Galesville: Good macadam. Traffic cautioned to look out for construction crews.

Galesville-Grave Creek: Paved. Grave Creek-Sexton's (South Hill): Construction under way from Grave Creek to south foot of mountains. Traffic detoured over old road night and day. Good dirt road. Steep grade averaging 10 per cent.

Sexton's-Grants Pass: Paved. Grants Pass-Medford-Ashland-Call-ifornia State Line: Paved.

West Side Highway

Portland-West Dayton: Paved; traffic for McMinnville and points beyond will find an all paved route via Dayton and Three Mile Lane. Highway closed for construction from West Dayton to Ft. Joe.

Ft. Joseph-McMinnville: Paved. McMinnville-Whitson: Closed for paving. Traffic for Whitson and points south take Booth-Bend leaving McMinnville via Grant Street rejoining McMinnville at Whitson or Amity.

Whitson-Amity New highway closed. Take old road, graveled and in fair condition.

Old Oregon Trail

Pendleton-Deadman's Pass: Excellent macadam.
Deadman's Pass-Hilgard: Rough mountain road.
Kamela-La Grande: New standard grade, rough in places. Under contract for macadamizing. Cautious driving necessary. One short detour at Hilgard. Follow detour signs.
La Grande-Hot Lake: Pavement and macadam; good construction.
Hot Lake-Union: Open. Cross tracks just east of Hot Lake, detour marked to main highway.
Union-Haines-Baker: Good macadam.
Baker-Nelson: Fair county road. Under construction. Watch for caution and detour signs.
Nelson-Huntington: New standard grade; under contract for macadamizing. Drive with care.
Huntington-Weber (via Olds Ferry): Fair condition.
Weber-Ontario: Excellent macadam.

Coast Highway—Clatsop and Tillamook Counties

Astoria-Miles Crossing: Paved.
Miles Crossing-Skipanon: Under construction. Closed to traffic 8:00 a. m. to 10:00 a. m.; open 10:00 a. m. to 10:15 a. m.; closed 10:15 a. m. to 12:00 noon; open 12:00 noon to 1:00 p. m.; closed 1:00 p. m. to 3:00 p. m.; open 3:00 p. m. to 3:15 p. m.; closed 3:15 p. m. to 5:00 p. m.; open after 5:00 p. m. Traffic for Seaside not wishing to wait for an open period may take county road via Melville which is open at all hours and is in fair condition except after rains.

Skipanon-Seaside: Paved.
Seaside-Miami: Gravelled or rockbed entire distance; under construction.
Miami-Wilson River: Gravelled; good condition.
Wilson River-Tillamook: Paved.
Tillamook-Beaver: Paved except three miles at Pleasant Valley which is under construction but open to travel.

Beaver-Hebo: This section is under construction but is open to travel. Condon bridge and cut-off also open.
Hebo-Pacific Junction: Gravelled, rough and narrow in places but safely passable.
Coast Highway—Tos and Curry Counties

North Bend-Marshfield-Couville: Paved.
Couville-Bandon: Passable. Open and in good condition.
Bandon-Port Orford-Gold Beach-California Line: Open and in good condition; automobile stages operating.
Marshfield-Bandon (via Seven Devils Route): Open but rough.

(Continued on Page 8.)

4 OUT OF 5 FORDS SOLD STILL USED

Out of a total of 5,517,956 Ford Model "T" cars and trucks sold in the United States since 1908, 4,475,245 are still in daily service, according to a statement issued by the Ford sales department at Detroit.

"Thus it will be seen," continued the statement, "that out of every five Ford cars and trucks sold to retail purchasers in the United States during the past fourteen years, four are still in actual daily use, which is remarkable when the hard service of commercial cars is taken into consideration. This seems to forcibly confirm the popular knowledge of the longevity of Ford cars."

"These Ford products have been quite evenly distributed throughout the United States as borne out by the fact that through the sparsely settled communities in the West to the densely populated cities in the East, practically the same ratio of Ford cars and trucks to population exists."

"An idea of the important part played by Ford cars and trucks in the daily transportation of goods and persons in the United States can be gained by realization of the fact that with the Ford cars now in operation, averaging a minimum of 5000 miles per year each, they would pile up a total of twenty-five billion transportation miles—equivalent to more than a million trips around the world."

DEADLOCK RESULTS IN FRENCH MEDAL VOTING

PARIS, June 24.—Because of a rule which requires that a candidate for the medal of honor of the Salon of French Artists must receive a majority of the votes in three ballots, the society has been unable to distribute the medals of honor for painting, sculpture and engraving. The balloting resulted in no decision being reached.

VANCOUVER, B. C.—Vancouver is looked upon favorably as a site for one of the Myrtle Shumers orthopaedic hospitals, according to Pas Imperial Potentate H. P. Hendrick of Philadelphia.

QUALITY SERVICE SANITATION

Going on a Picnic?

If so, come in this evening for your daily supplies. We have every thing in the food line to make it an enjoyable outing.

Half of any day's recreation is a well filled lunch basket, and especially so when it is carefully filled.

Fruits, Delicatessens, Cold Meats, Canned Goods—every thing is here.

Pendleton
Trading Company
Phone 455



The Sign of Service

"If It's On the Market We Have It."

Some Day You Are Going to Own a Ford

Some day you are going to own a Ford. You may or may not have a large car at the same time, but the fact remains that some day you are going to be a Ford owner. The universal demand and the universal necessity for a car such as the Ford make it essential that the product itself measure up to the highest standard. As the popularity of the Ford car has increased, our effort to keep pace by the rendition of real service has been doubled. Isn't it about time that you became better acquainted with the Ford car and with us?

ORDER YOUR NEW FORD NOW!

Simpson Auto Co.

FORD AND FORDSON

AUTHORIZED SALES AND SERVICE

Phone 488

Pendleton, Ore.

Capital's Ol' Swimmin' Hole



Forrest and Bobby, sons of Senator Thaddeus H. Casaway of Arkansas, take a dip in Rock Creek Park, Washington.

A BUSINESS COUPE OF STEEL

Dodge Brothers offer to the business public of America an entirely new principle in Coupe body construction.

From framework to window mouldings the body is built of steel. It is the first all-steel closed car ever marketed. This design anticipates every possible requirement of commercial travel. It insures unusual quietness—unusual grace—unusual stamina. It has made it possible to give the Coupe that same lustrous baked-on enamel finish for which Dodge Brothers open cars have long been famous.

The upholstery is of genuine leather—leather that will wash and wear. The seat is wide and comfortable. Carrying compartments are accessible and spacious. The car is equipped with a heater, dome light, window levers, windshield cleaner, cord tires, Yale door locks, and every other appointment necessary to the owner's comfort and protection.

Built inside and out to withstand the wear and tear of everyday use, it retains the same lightness and beauty of line which you are accustomed to look for in Dodge Brothers cars.

It is the Business Coupe which business people the world over have been expecting—from Dodge Brothers.

The price is \$280 f. o. b. Detroit.

ELLIS-SCHILLER CO.
Cor. Main and Water Sts.

