

In The MOVIES

ALTA TODAY

STUFFS GIVE WAY FOR SIMPLE CLOTHES

Miss Allison, the blonde Metro star, sat amid the raffish and fur-trimmed gowns which have been so closely associated with the character she has played in her recent pictures, and a role quite different to any she has yet enacted.

In "The Game" the Metro special at the Alta Theatre, Miss Allison has an opportunity to show off her talents for the role calls for simple, practical, and comfortable clothing. She has been playing the society girl for so long that it seemed queer to her to play a different role. "However, I was glad to get away from drawing rooms and gowns. But this one, which I appear as a girl born and bred in the snow-bound regions of the north, affords me no opportunity to display the feminine picture, with its stylish apparel. All times in 'The Game' are worn in the idea of comfort, rather than looks."

"The Game" is from the stage play by Willard Robertson and Kilbourn Gordon, which enjoyed a New York run last season. Dallas Fitzgerald directed the production and Jackson Rose photographed. The art direction is by Sidney Ullman. Edward T. Lowe, Jr., wrote the scenario.

Miss Allison has an able supporting cast in the following persons: Forrest Stanley, Edward Cecil, Zeffie Tilbury, William Elmer and Sidney D'Albrook.

RIVOLI TODAY

Great Ziegfeld Photodrama "The Black Panther's Club" Solving at the Rivoli Today

The W. K. Ziegfeld photodrama, "The Black Panther's Club," starring Florence Reed, and directed by Elmit Chautard from a story by Elmit Donohoe based on Swinburne's immortal poem, "Faustine," will shortly be shown in this city, according to announcements received here today from the Ziegfeld office in New York.

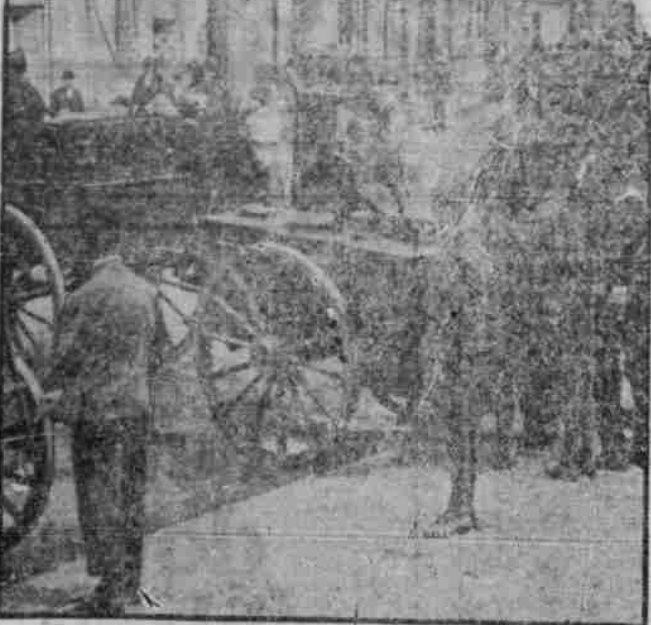
This spectacular photodrama, which is said to be one of the most magnificent and gorgeous screen productions offered in many seasons, presents the Broadway favorite, Miss Reed, in a dual role during which she is seen in four separate and distinct characterizations.

The cast which the producer has assembled to support Miss Reed is of an unusual brilliance. Headed by Norman Trevor, the popular English actor who is now starring in "Enter Madame" at the Fulton Theatre in New York, it contains such well known persons as Tyrone Power, Earle Foxe, William Roselle, Henry Stephenson, Mlle. Daxie and Paula Shay.

"The Black Panther's Club" is said to establish a high-water mark for screen productions of exceptional beauty, power and investiture. It is a photodrama of almost unprecedented proportions.

Florence Reed, star of the production, is generally recognized as Broadway's favorite actress. During the past season she held enthralled record-breaking crowds at her performances in rapid succession, while the colorful scenes and spectacular developments lend an air of enchantment and fascination to the picture seldom seen on the screen. The air of realism which Director Chautard has developed, the wonderfully superb acting of Miss Reed and the magnificent lighting effects all tend to make "The Black Panther's Club" one of the screen masterpieces of the season.

Caring for Explosion Victims



Many victims of the explosion of the aniline works at Oppau, Germany, faced starvation as their homes were destroyed. French soldiers field kitchens in commission to feed the hungry.

ENTIRE BRITISH MODERN CITY LISTED FOR SALE

LONDON, Oct. 20.—(U. N. S.)—Does anyone want to buy a complete modern, up-to-date town fitted with all conveniences? It is available.

Price, only \$50,000,000.

The site covers 9,200 acres. There are 312 well-built houses and sixty hostels. The churches number six. Two movie houses each accommodate 1,100. There are a couple of public halls capable of holding 1,500 people.

A certain kitchen is capable of cooking for 14,000 people daily; a special laundry can deal with the needs of 5,000 persons every week.

those willing to take the bargain in one single lot are requested to apply.

Great War-Time Product

Gretas was a great war-time product, specially constructed for the purpose of producing cordite explosive. But after November, 1918, the cordite industry declined somewhat, and as the British Government has no particular war in view at the moment it has decided to wind up the business.

The site covers 9,200 acres. There are 312 well-built houses and sixty hostels. The churches number six. Two movie houses each accommodate 1,100. There are a couple of public halls capable of holding 1,500 people.

A certain kitchen is capable of cooking for 14,000 people daily; a special

MOTHER, QUICK! GIVE CALIFORNIA FIG SYRUP FOR CHILD'S BOWELS

Even a sick child loves the "fruity" taste of "California Fig Syrup." If the little tummy is constipated, or if your child is listless, cross, feverish, full of cold, or has colic, a teaspoonful will never fail to open the bowels. In a few hours you can see for yourself how thoroughly it works all the constipation poison, sour bile and waste from the tender, little bowels and gives you a well, playful child again.

Millions of mothers keep "California Fig Syrup" handy. They know a teaspoonful today saves a sick child tomorrow. Ask your druggist for genuine "California Fig Syrup" which has directions for babies and children of all ages printed on bottle. Mother, you must say "California" or you may get an imitation fig syrup.

cial laundry can deal with the needs of 5,000 persons every week.

Houses Last 200 Years

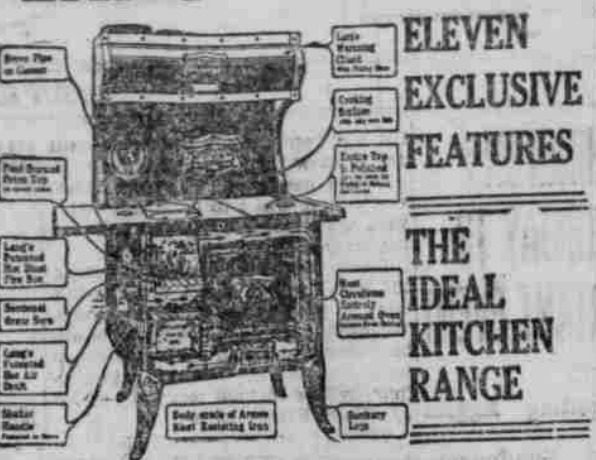
All the houses are guaranteed to last for 200 years at least. The gardens surrounding them were laid out by experts. Naturally, the town being built by public money, no possible expense was saved.

But then there are wonderful factories, marvelously equipped. The town has seventy-eight miles of standard gauge railroads and forty-seven miles of narrow gauge. It has water works which supply 10,000,000 gallons daily; the finest glycerine distillery in the world, while the plant for dealing with sulphuric acid, ether and gas is the last word in scientific accuracy. The laboratories are marvelous of their kind, and the power station is one of the finest in Britain. But all now stand deserted.

It is offered either as a great commercial factory, a new colony or a holiday resort.

Anyone putting down the \$50,000,000—for which the British Treasury will be duly grateful—can utilize it all three if so desired.

THE LANG "PACIFIC"



WHY HOUSEWIVES PREFER LANG

THE LANG "PACIFIC" Family Range was designed to meet every requirement of the modern kitchen. Its construction is embodied around the famous LANG HOT BLAST PRINCIPLE thus enabling it to furnish the maximum of heat units for the least possible amount of fuel consumed.

"The Lang Hot Blast will save you, Makes a ton of Coal perform like two."

Call at our store and let us show you the "LANG" before you buy.

RILEY & KEMP
523 MAIN STREET
PENDLETON, ORE.

SCIENCE • RESOURCES • EXPERIENCE • EQUIPMENT



It takes more than a theory to develop Correct Lubrication

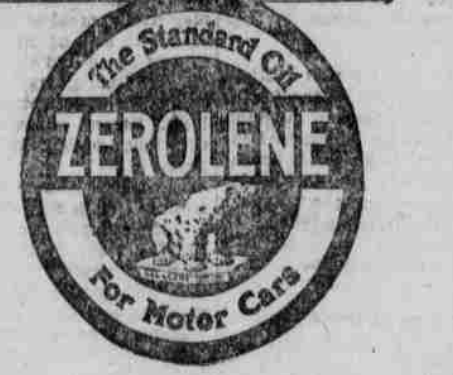
No advantage of science, of vast resources, of long experience, of up-to-the-minute equipment and methods, is overlooked by this company in making Zerolene a lubricating oil of the highest quality.

If it were possible to make a better oil than Zerolene, this company would make it.

It is made in five consistencies, one of which is exactly suited to the needs of your car.

Use Zerolene for Correct Lubrication.

STANDARD OIL COMPANY
(California)



SOMETHING NEW

We have just received the most beautiful design and pattern in Ivory, just what you have always looked for and wanted, a very neat edge of blue on every article. When engraved the blue is seen in the background. Look in our windows, you will see a small display of this beautiful ivory. The price is no more than the old style ivory which everyone has. Be one of the first to be up to date. A wonderful Xmas gift.

AT THE HOME OF GIFTS THAT LAST

Hanscom's Jewelry Store

HOTEL PENDLETON BLOCK PENDLETON, OREGON

Alta Today



IRMA MAY IS HOSTESS FOR BIRTHDAY PARTY

(East Oregonian Special.)

WESTON MT., Oct. 20.—Jim McDaniels sold his farm to a Mrs. Yeaker of Daisy, Wash. Mr. Lindstrom has the ranch leased for one year and Mr. Yeaker will not move his family here until next fall. Mr. McDaniels expects to leave for Placencia, Cal., immediately to join his wife, who is teaching there.

Mrs. J. W. Hyatt bought the Mrs. Martha Van Winkle house and lot in the south of Weston and will move there for the winter.

The school board met last week and decided to build three more stalls onto the barn. When the weather is bad the school children have to take their horses to neighbors for barn room. The addition will be built immediately.

Mr. and Mrs. Ralph Lansdale visited Mr. Lansdale's mother and sister in Riverside, Pendleton, Saturday.

Misses Gwendolyn Compton and Dorothy Tweedy, high school students of Weston, were weekend visitors at their homes last week.

Misses Pauline Rayborn and Dorothy Tweedy furnished the music at the reception given at the church for the new minister, Mr. Coon, and family, Friday night.

At the meeting of the Weston Mt. Community Club it was decided to pay \$3.50 per day for help in digging potatoes. A number have finished digging, but the most of the growers decided to leave their potatoes to thoroughly ripen before digging as parts of the fields were not frozen down.

Mrs. Charley May gave a birthday party for her daughter Irma's 9th birthday Saturday. The afternoon was spent in playing games and dainty refreshments were served the little folks who had a most pleasant afternoon.

The mountain has been having very heavy rains for several days and all work stopped. Farmers are plowing and everyone seems to think indications extremely good for next year's crops. A number are seeding fall grain and all the plowing down this fall will be so much the better for spring seeding.

Frank English, a prominent farmer of Weston mountain, was in Milton on business Tuesday.

County Farm Agent Fred Bennion was on the mountain Thursday to see W. L. Rayborn and others.

Fred Henderson has been having considerable dental work done the last two weeks at Athena by Dr. Froome, recently of Portland. Dr. Froome will remain in Athena if there is trade to warrant moving.

PREMIER SAYS ENGLAND IS IN GRIP OF SERIOUS UNEMPLOYMENT SITUATION

LONDON, Oct. 20.—(U. P.)—England is in the grip of the worst unemployment situation of the century. Premier Lloyd George declared in the commons today, Derangement of trade with exchange fluctuations,



Rivoli Theatre Three Days Starting Today

Children 10c Adults 35c Loges 50c Tax Included

Gensel on the Wurlitzer

FLORENCE REED

The Queen of Emotional Actresses

The Black Panther's Cub

From the wild Apache dances in the heart of the Latin Quarter of Paris, to quiet English countryside and back again to the barbarous scenes of splendor of Ancient Rome, in a cycle of tremendous dramatic events—that is "THE BLACK PANTHER'S CUB."

The Exhibitor's Trade Review said:
"One of the finest productions we have seen, elaborately produced. . . ."
The New York Journal said:
"Like Drurylane Melodrama—'THE BLACK PANTHER'S CUB' IS a whirlwind of emotion and action."
The New York World said:
"The Black Panther's Cub" has not been outside this season. Its hundreds of fleeing scenes are as soft as rose petals and as pleasing to the eye as music to the ear."
The New York Herald said:

"The Black Panther's Cub" is a gripping film. Mr. Ziegfeld has staged it as lavishly as his brother Florence Ziegfeld does his famous Follies."
The National Board of Review said:
"Compels same admiration which old time theatre goes treasure for a Medjiska or a Sarah Bernhardt."
The N. Y. Morning Telegraph said:
"Spectators were loud in their praise evidenced by the constant outbursts of applause."
The N. Y. Evening Telegram said:
"Florence Reed plays dual role in

"The Black Panther's Cub" in which she reaches remarkable emotional heights. Distinguished cast."
Screen Opinion said:
"Florence Reed has over-stepped in excellence of screen interpretation all former efforts—mounting of this drama to point of exquisiteness—acting is elaborate."
Exhibitor's Herald said:
"The Black Panther's Cub" is the character of cinema entertainment that is responsible for the popularity of big motion pictures today."



BRAY PICTOGRAPH

MAY ALLISON

In **BIG GAME** picture with a punch. Special Feature **THE ALTA ORCHESTRA** Comedy **THE BIG PUNCH**

Arcade Today

Children, 5c Adults, 20c

NEAL HART "SKYFIRE" COMEDY