

DAILY EAST OREGONIAN, PENDLETON, OREGON, SATURDAY EVENING, SEPTEMBER 17, 1921.

EASTERN OREGON AUTO CLUB TO MOVE QUARTERS TO FRONT OF ROOM OF PACIFIC COAST ELEVATOR CO.

New Location on Main Street to Make Office More Accessible to Patrons Who Visit.

Announcement has been made by the Eastern Oregon Auto Club that a new headquarters office will be opened on Monday in the front office of the Pacific Coast Elevator Co., next the Inland Empire Bank on Main street. The arrangement has been made after months of endeavor by the club to secure offices most convenient for the service of members and tourist traffic. Present headquarters have been in the Elks building through the courtesy of the Pendleton Commercial Association. With the rapid growth of the club, however, it has been found necessary to make the move to a more accessible position.

Six months of activity in working for better road conditions, better accommodations for tourists, and the maintenance of an accurate touring information bureau, has demonstrated the value of the club, and the decision of the management to increase the service to the members and the community at large comes as the result of the demand on the club. While many auto clubs function only during the summer touring season, the Eastern Oregon Auto Club has announced its intention of maintaining an all year service. Need for this service is seen in the rush of automobilists to the club for information as to mountain roads and weather conditions. Many tourists and automobile drivers are very independent of permanent information bureaus, according to Ernest Crockett, local secretary, until weather conditions become very unsettled and they find that they cannot keep track of daily changing weather conditions and routes of travel. This independence of tourists is noticeable, according to the secretary, when they leave Pendleton for Portland by way of Pilot Rock because they are still using old maps which show that as the route.

More and more the automobilist is recognizing the necessity for some accurate source of road information and that the automobile clubs throughout the country are the best agency. The service accorded A. A. A. members wherever they go is bringing thousands more of them into their local clubs each year.

During the Round-Up week the

auto club will have an extra force and will act as an information bureau for all owners, as to camping, parking and road conditions in and around Pendleton. Efforts of the club have proven successful in opening the road between Portland and Pendleton, allowing traffic a through route on the Columbia River highway with the exception of three and one half miles of detour road. This arrangement means the elimination of Mosier hill and all other objectionable road.

Daily reports on weather conditions in the Blue mountains and the rocky mountains as well as in the Bend country, which affect road conditions, have been arranged for the club here, and it is advertising the best information service possible.

ROAD REPORT GIVEN OF EASTERN OREGON

Following is the road report of the Eastern Oregon Auto Club on the condition of roads in the eastern part of Oregon.

Columbia River Highway.

Pendleton to Seufert, good macadam road except few hundred feet at Cape Horn yet un surfaced. Seufert to The Dalles paved. The Dalles to Gooseberry Springs detour out of The Dalles three miles. Gooseberry Springs to Rowena highway in fair condition. Look out for construction trucks. Rowena to Marsh Pit good macadam. Marsh Pit to Mayordale paved. Mayordale to Mosier road closed for paving, follow detour 2 1/2 miles into Mosier. Mosier to Hood River 5.3 miles paved, remainder good macadam. Hood River to Astoria paved except one mile through painter.

Old Oregon Trail. Pendleton to La Grande first 20 miles macadamized. From this point to Hilgard, rough county road; from Hilgard to La Grande under construction; very rough, watch for danger signs. La Grande to Baker, paved to Hot Lake. Hot Lake to Union under construction, closed. Take foot hill detour; Union to North Powder, being macadamized, road in fair condition. North Powder to Baker, good, construction at bridge under construction at Wolfe creek. Baker to Huntington, good county road; Nelson to Huntington, new grade now open to public, except from Gale's crossing to

Weatherby hotel. Lime to Overhead crossing, use old road at these two points; old road in good condition. Ferry at Oids for Idaho and Salt Lake.

Oregon-Washington Highway. Heppner Junction to Gilliam, Morrow county line, rough. To Lone, detour Lexington to Jordan. Lone to Heppner very rough. Heppner to Umatilla-Morrow county line fair. To Pilot Rock very rough, under construction. Pilot Rock to Pendleton macadam road, good except mile out of Pendleton. Pendleton to Walla Walla paved. Good road to Spokane.

La Grande Enterprise Highway. La Grande to Island City paved. Island City to Elgin good county road. Elgin to Minam, first 5 miles macadamized. Minam hill to Wallowa canyon fair; Wallowa canyon to Joseph under construction, detours well marked. Joseph to Wallowa lake fair county road.

Enterprise-Eora highway. Rough in places but passable throughout.

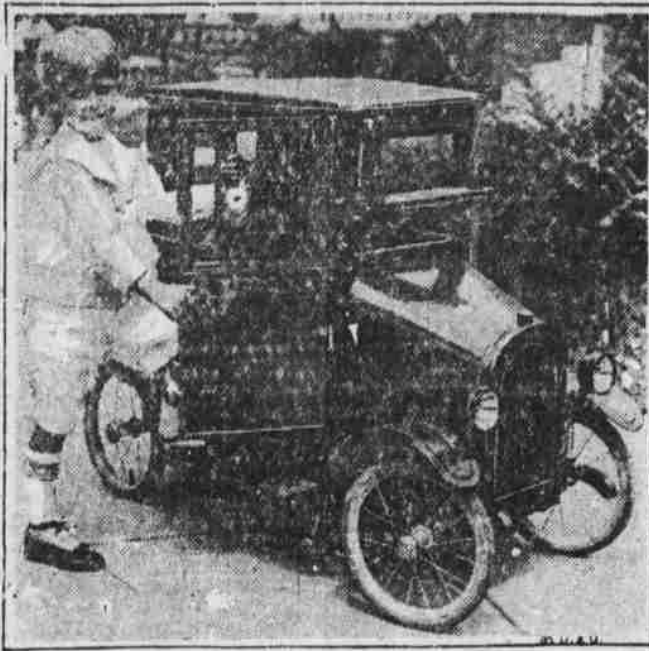
Baker-Unity Highway. Baker to Unity: good mountain road.

Baker-Cornucopia Highway. First ten miles from Baker macadamized, remainder fair road.

Pendleton-John Day Highway. Open through to Grant county. Take Nye road from Pilot Rock south to Albee. Roads south very bad and rocky.

Pendleton-Cold Springs Highway. Dirt road to Holdman, rough. Construction underway at Cold Springs.

World's Smallest Coupe



Eugene Pawlowicz, of Milwaukee, has the smallest coupe in the world. It has pneumatic tires, wire wheels, telescopic lights, upholstery and plate glass windows. All it lacks is a motor, but foot pedals will run it. Eugene's dad made it for him and it is valued at \$300.

NEW MANAGER COMES TO TAKE OVER OLDSMOBILE



T. J. Casey, formerly of Portland, new manager of Oldsmobile here.

The Oldsmobile Co. of Oregon has strengthened its organization and has transferred T. J. Casey from Portland where he has been connected with the company for some time, to take over the management of the Pendleton branch.

Mr. Casey's experience in the automobile world extends over a period of several years. He was with the Good-year Tire and Rubber Co. as office manager of their branch at Butte, Montana, for several years. He also had charge of the credits and service department.

Before leaving Portland he secured the services of an expert mechanic who has had special training in Oldsmobile work, and the ideal of the local branch will be service de luxe for Oldsmobile owners, old and new.

A service station will be added to the local branch, and a full line of parts will also be carried.

DEEDS.

Ralph Holte to Roswell C. Canfield, \$40. SW 1-4 SW 1-4, Sec. 32, and SE 1-4 SE 1-4 Sec. 31, Tp. 4, N. R. 28. Elizabeth L. McGinnis to Carl McGinnis, \$10. W 1-2 lots 6 and 7 in block 26, Res. Add. and W 1-2 fractional Lot 6, block 26, Arnold and Riley's Add. to Pendleton.

Jennie A. Dale to Wm. N. Titsworth, \$600. Lot 1, block 3, Helix.

Morie Galbreath to Hans Nelson, \$4000. W 1-2 NW 1-4, W 1-2 SW 1-4, Sec. 27, and S 1-2 SE 1-4 and E 1-2 SW 1-4, Sec. 28, Tp. 2, S. R. 33, and SE 1-4 NE 1-4 and NE 1-4 SE 1-4 Sec. 28, Tp. 2, S. R. 33.

Lulu E. Rea to James A. Fee, \$1. SE 1-4 SW 1-4, Sec. 17, Tp. 2, N. R. 34.

Burr Hinkle to Otis F. Jones, \$50. mete and bound tracts in Secs. 8 and 17, Tp. 1, S. R. 32.

Jas. H. Sturgis to Cecil B. Sturgis, \$100. Lands lying north of Umatilla river; N 1-2 and SE 1-4 and SE 1-4 and SE 1-4 SW 1-4, Sec. 9, and NW 1-4 and W 1-2 NE 1-4 and S 1-2 Sec. 15, and W 1-2 SW 1-4 Sec. 14, all in Tp. 2, N. R. 31.

BASEBALL SUMMARY

National League Standings			
	W.	L.	Pct.
New York	89	54	.622
Pittsburg	84	56	.600
St. Louis	79	62	.560
Boston	75	66	.532
Brooklyn	70	69	.504
Cincinnati	64	77	.454
Chicago	54	86	.386
Philadelphia	48	95	.336

American League Standings			
	W.	L.	Pct.
Cleveland	89	52	.631
New York	88	52	.629
St. Louis	73	70	.511
Washington	69	71	.493
Boston	66	70	.485
Detpott	69	74	.483
Chicago	58	81	.418
Philadelphia	47	89	.345

Pacific Coast League Standings			
	W.	L.	Pct.
Los Angeles	85	71	.550
Sacramento	88	72	.577
San Francisco	85	74	.569
Seattle	82	75	.553
Oakland	80	80	.500
Vernon	88	82	.514
Salt Lake	67	99	.402
Portland	45	123	.268

Yesterday's Results
 At Seattle 3-1, Portland 8-5; at Los Angeles 6, Vernon 5, (16 innings). At San Francisco 5, Oakland 8; at Sacramento 4, Salt Lake 2.

American Association Results
 Columbus 5, Toledo 0.
 Louisville 8, Indianapolis 4.
 St. Paul 2, Minneapolis 1.
 Kansas City 9, Milwaukee 4.

Western League Results
 First game, Wichita 18, Joplin 5.
 Second game, Wichita 3, Joplin 2.
 First game, Oklahoma City 10, Tulsa 3; second game, Oklahoma City 5, Tulsa 12.

Where the Teams Play Next Week
 San Francisco at Portland, Los Angeles at Seattle, Sacramento versus Oakland at San Francisco, Salt Lake versus Vernon at Los Angeles.

QUALITY SERVICE SANITATION

Round-Up Week

is a poor time to start buying your Groceries—lay in a large supply of non-perishable goods now. Buy by the case—its cheaper and of more convenience to you.

GET YOUR "LET 'ER BUCK" NOW

Pendleton Trading Co.



Phone 455 At the Sign of a Service "If It's on the Market We Have It"

LOOK

AT THESE PRICES ON USED FORD CARS AND TRUCKS

They Are Going Fast—only 5 left

New cars went down and we will make the following reductions on used cars while they last:

	Was	Now
1 1918 Truck Chassis with body	\$325.00	\$275.00
1 1920 Roadster, starter, demountable rims	375.00	320.00
1 1919 Roadster, fair condition	200.00	150.00
1 1918 Roadster, box on rear	235.00	180.00
1 1917 Roadster, fine for a bug	175.00	125.00

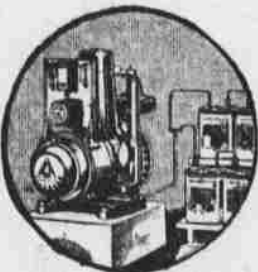
Compare these prices with the Portland prices and then come in, look them over. We will show you bargains that will make you buy. Yours for a Ford.

Simpson Auto Co.

Water & Johnson Sts. SERVICE Phone 108

DELCO-LIGHT

"Electricity for every Farm"



CITY CONVENIENCES FOR COUNTRY HOMES

A complete modern bathroom, electric vacuum cleaner, electric iron, bright lights in every room of the house and in all parts of the barn—in fact all city comforts and conveniences may be yours when you install Delco-Light.

ACKERMAN & ZURFLUH
 Golden Rule Hotel Building.

What a demonstration will show you about
The FRANKLIN

EASY STARTING: no pushing of buttons or meshing of gears—simply turn a switch and the motor starts.

EASY TO CONTROL: being light, it gets under way quickly, stops quickly, and steers without effort.

SIMPLE TO DRIVE: automatic spark control, responsive brake, easy-acting clutch. If engine stalls accidentally, starter functions automatically.

COMFORTABLE: rides "softly"—light weight and flexibility iron out rough going, give roadability.

SIMPLE TO CARE FOR: no radiator to fill and fuss with; only three grease cups to fill; wick oiling system.

FREE FROM TROUBLE: averages but three punctures and less than one blowout in life of complete set of tires—12,500 miles. Air cooled, therefore never any cooling troubles of any sort.

ECONOMICAL:—

20 miles to the gallon of gasoline
 12,500 miles to the set of tires
 50% slower yearly depreciation
 (National Averages)

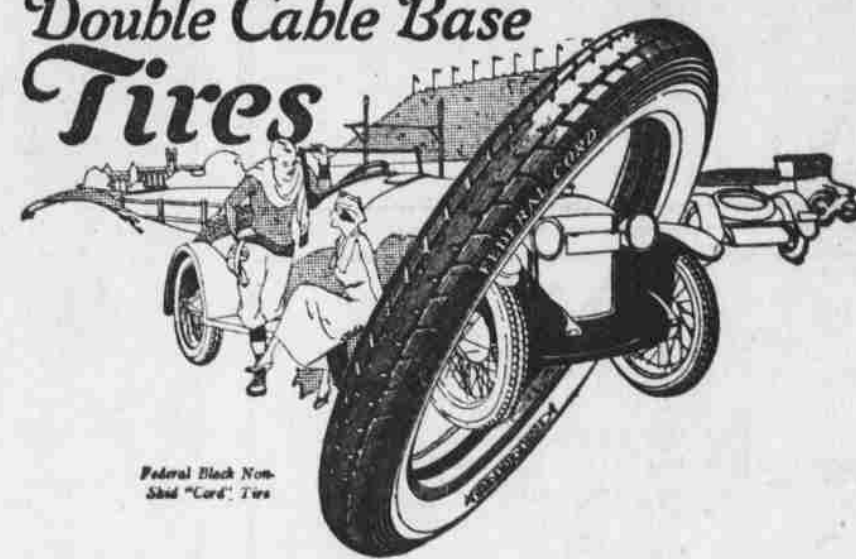
NEW PRICES EFFECTIVE SEPT. 1, 1921
 Touring Car \$2350 Sedan \$3350
 Other types in proportion—all f. o. b. Syracuse, N. Y.

Pendleton Auto Co.

Established 1097
 East Court and Johnson Sts.

Quality PRINTING at Reasonable Prices—
 East Oregonian Printing Department.

FEDERAL
 Double Cable Base
 Tires



Stop Letting Rims Abuse Your Tires!

Federals exceed in mileage because none of their wear is needlessly wasted by rim-chafe.

you have read so much. These cables anchor the tire solidly against the rim and prevent rim-cuts, blow outs just above the rim, tube pinching, etc. There's real economy in using Federal Tires. A trial will convince you.

Federals alone have the Double-Cable-Base—these four staunch cables of twisted steel about which

ALLEN-KNIGHT COMPANY
 Pendleton, Oregon