

You'll appreciate the convenience afforded by the Branch Post Office contained within the big store. We prepare your packages for shipment by parcels post.

The People's Warehouse

We call your attention to the "Surplus Grocery Sale" we are conducting in the Sanitary Grocery. The savings are numerous. Take advantage of them.



Good News for the Summer Shopper

A MOST WELCOME SALE OF QUALITY PONGEE

In accordance with our long standing custom, the Big Store is now offering the Best for the Price no Matter What the Price.

Free from the usual filling, a pongee that you may feel satisfied to devote your careful, painstaking work in the making up of so many useful garments.

- HERE ARE THE PRICES:
- 12 Momme (a good weight) yard... 83c
 - 14 Momme (a heavy weight) yard... \$1.19



Keep Your Feet Well. Wear 'Arch Preserver' Shoes.

Oxfords as shown in picture, are among our new arrivals, in brown and black.

- Brown, the pair... \$11.00
- Black, the pair... \$10.00

New in Color and Design

Grey nubuck oxfords, black trimmings, military heels, Goodyear welt soles... \$9.00
New Tan Brogue—3 eyelet open throat effect, welted soles, military heels... \$7.50
Tan 1 Strap Cat-fish Pumps, military heels, Goodyear welt soles, the pair... \$7.50
If you have foot troubles come in and see us. We are prepared to give you "Foot Comfort" service.

Tom Sawyer Washwear for Real Boys

is offered in dozens of the prettiest little garments that you could wish. They're made up just the way you'd make them and they'll save you the trouble of making them.

We are showing Rompers, Middies, Norfolk Suits, and Dutch garments in the front display window.

Take Advantage of Our Surplus Grocery Sale

- Plums, fresh per lb. 8c
- Blackberries, per crate \$2.75
- Peaches, per crate \$1.10
- Loganberries, per crate \$2.25
- Tomatoes, fresh, per pound 15c
- Watermelons, per pound 4 1/2c
- Cantaloupes, each 15c

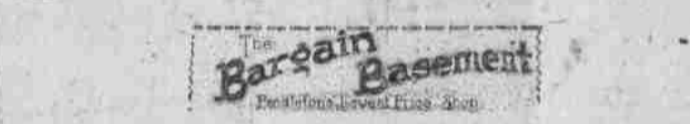
Fresh shipment of Tru-Blu Cookies arrived. Along with our big Grocery Sale we are giving 25 per cent discount on all dishes, glassware, Hot Point Electrical Appliances and Universal Percolators. See the special display in our Grocery window.

A BEAUTIFUL DISPLAY OF SILK DRESSES

In the prevailing fashions and the popular color "gray."

Though our dresses are inexpensively priced, they possess many commendable features which the fashionable woman will appreciate. Clever in modeling and finished with that peculiar smartness of trimmings, they have all the modishness you would expect to find in much higher priced models.

A most beautiful display is shown in the Ready-to-Wear window.



This Economy Shop Offers You the Greatest Savings

- Banquet Aprons, up to \$3.00, now \$1.19
- \$8.50 and \$12.50 Silk Skirts \$3.75 and \$4.95
- \$8.50 Best Corsets \$4.95
- \$3.25 Embroidery Packages 95c
- Palm Olive Sosp, all you want, but 7c
- Polly Prim Aprons 59c
- Silk Auto Caps 1-3 regular price.

Besides the hundreds of other good things on display, we offer you Shoes at prices you like to pay.

Sale of Nets

We call your attention to our most popular sale of beautiful curtain nets, in figured and plain materials. Priced 75c, 80c and 85c On display in the big center window.

To the Man of the Finer Tastes

We are displaying (in the men's window) an attractive showing of general wear for the better dressed man. We ask you to look it over.

INSPECTION BEING MADE OF RANGE IN NORTHWEST STATES

Pendleton and Umatilla County on Itinerary of Federal Men Who Are Collecting Facts.

PORTLAND, Ore., July 10.—E. S. Kavanaugh, in charge of Grazing in the Forest Service Office here, and Grazing Inspector C. E. Reichford, from Washington, W. C., left here on July 16, for six weeks inspection of the National Forest grazing ranges in Washington and Oregon. Their trip will take them through the cattle and sheep country of eastern Oregon and Washington, and has for its purpose gathering data on the ground regarding the actual value of the forage resources of National Forest ranges.

Mr. Reichford is making a general trip throughout the national forests of the West on a two-year study of this question of range valuation and now comes to the Pacific Northwest on a preliminary trip. The results of this study of range valuation of the Forest ranges has been promised to Congress by the Forester, Col. Greeley, and Mr. Kavanaugh's office will be responsible for this work as far as the Oregon and Washington Forests are concerned.

Messrs. Reichford and Kavanaugh will go first to the Gaiter Forest, then through the Yakima Indian Reservation into the Wenatchee Forest, on to the Methow and Okanogan Valleys, to Spokane. From Spokane they will go to Pullman, Wash., to confer with men at the Washington State Agricultural College, then to Pendleton, and to the Oregon State Experiment Station at Udon. From Udon they will proceed to the Whitman National Forest at Baker, then south to the John Day country on the Malheur Forest, then to the Ochoco, and Deschutes Forests, probably going as far south as Lakeview.

Throughout the trip they will confer with representatives of the agricultural colleges of both states, with owners and agents of private range lands and representative stockmen in both states, the aim being to inspect typical ranges and to secure the advice and suggestions of interested parties. The final object, Mr. Kavanaugh says, is to find the best method of determining the proper value in terms of the grazing fees of the forage resources of the national forests within the two states.

MISSION OF MERCY TO INDIANS IS UNDERTAKEN

SAN FRANCISCO, July 10.—(U. S. N.)—On a mission of mercy to the Indian tribes of Northern California, an elaborately equipped medical and dental clinic, mounted on a powerful motor truck, has left here for Redding, Cal., where a route will be laid out to reach even the most remote rancherías of the numerous tribes in Shasta, Lassen and Modoc counties.

Following completion of the northern California expedition, the truck will proceed to other parts of the state inhabited by Indians. In recent years the Indians have been ravaged by pestilence and frequent famines. Only recently the Shasta Indians made a plea that be allowed to kill deer out of season in order to provide themselves with food. This clinic, provided by the Indian board of cooperation and the department of the interior, will carry a physician and a dentist. California state departments have provided two nurses to visit the California Indian tribes.

There are about 20,000 Indians scattered through forty counties of the state in 300 bands and groups. It is anticipated by those arranging the itinerary of the clinical party that the work will take many months.

Word will be sent to all Indian bands in the county in which the clinic is engaged that they may be expecting a visit from the party. The head men of each band will be asked to arrange for the treatment of all their people who need medical aid and dental work so that the work of the clinical staff may be done promptly upon arrival at each community.

The leaders are already being urged to encourage their sick friends and neighbors to accept the aid of the "white man's" doctors and nurses, and to make known to their people that the mission of the big white automobile is one of friendliness.

A wealthy Chicago man, the owner of a chain of restaurants which bear his name, has offered one thousand dollars to anyone who will give him one good reason for the private manufacture of revolvers in America and for the use of the United States mails by the manufacturers.

LUCKY STRIKE cigarette

It's toasted

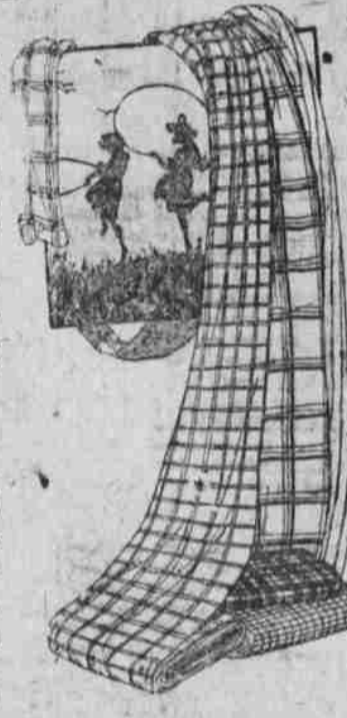
JCPenney Co. The Best Goods at Lowest Prices

Buying here is so easy. You know that you buy QUALITY for we have no "Sales," no "Left-over" stocks to dispose of, no "Marked Down" goods. You feel satisfied with what you buy at these prices.

Buying for cash in large quantities direct from manufacturers, eliminating middlemen's profits, we effect substantial savings for you. The utmost in Style and Quality at Lowest Prices is yours when you buy here.

IF YOU WANT TO SAVE TRY THESE.

- 40-in. Dress Voiles, good array of pleasing colors, yd. 23c
- 40 in. Dress Voiles, novelty and plain, yard... 39c
- 40 in. Dress Voiles, finer quality, fancy, novelty and plain, yard... 49c
- 40 in. Organdie, floral conventional and checked patterns, yard... 39c
- 40 in. Imported Organdie, solid colors in all the wanted shades... 89c



NEW TODAY PONGEE 69c

33 inch, 12 Momme weight, imported all silk Pongee, natural color. An extraordinary value, yard. 69c

- ### CURTAIN MATERIAL
- borders, and allover 44 in. Filet Nets, cluster design, yard... 98c
 - 36 in. Scrims, colored floral and bird patterns, yard 19c, 25c, 29c, 39c and 49c.
 - 36 in. Marquisettes, white and ecru, suitable for curtains and fancy work, yard 39c
 - 36 in. Marquisettes, hemstitched, borders, yard... 49c
 - 36 in. Filet Nets, floral and conventional patterns, yd. 39c and 79c
 - 40 in. Filet Nets, dainty designs that appeal for exceptional drapery, yard... \$1.49
 - 36 in. Madras, for side drapes, forest, bird and rose, and flower patterns in gold, old rose, emerald and Copen, yard... 98c
 - 36 in. Silklines, plain and figured, yard 25c

CREPE DE CHINE

40 in. all silk Crepe de Chine, all the leading popular shades, serviceable and seasonable, yd. \$1.69

- ### BEAD NECKLACES
- Nothing is more delightful than our assortment of bead necklaces. Exquisitely fashioned in round, oval and fancy cut glass, agate and coral. Some come with pendants. Assorted colors, each 69c and 98c



JUST ARRIVED NEW STRAP PUMPS

Tan calf, two strap pumps, trimmed with brown calf tip, ball strap and vesting, low heel, Goodyear welt sole. The newest in Pumps, all sizes and widths. Pair... \$7.90

THE LARGEST CHAIN DEPARTMENT STORE ORGANIZATION IN THE WORLD

Quality PRINTING at Reasonable Prices— East Oregonian Printing Department.

BASEBALL SUMMARY

National League Standings:

New York	52	36	625
Boston	47	32	588
Brooklyn	43	42	590
St. Louis	41	42	494
Chicago	36	45	544
Cincinnati	32	50	390
Philadelphia	23	57	288

W. L. Per. American League Standings:

Chicago	53	29	655
Cleveland	55	21	649

PHONE 871

And your orders will be promptly filled.

We carry the Diamond W Brand of Canned goods — there is none better.

- PEAS Per Can 30c
- TOMATOES Per Can 25c
- BARBICUE SAUCE Per lb. 60
- SHRIMP Per can 30c
- PEACHES Per can 50c

Sanitary Grocery

GIBBONS AND FRENCHMAN SIGNED FOR OCTOBER GO

NEW YORK, July 10.—(A. P.)—Tom Gibbons of St. Paul has been matched to meet Georges Carpentier in October for the world's light-heavyweight championship.

Articles were signed by Eddie Reno, Gibbons' manager, and Promoter Rickards. The bout will be either in the Bronx or Jersey City in which Carpentier lost to Dempsey or in Madison Square Garden. The weights will be 175 pounds or under. Rickard did not announce the other terms.

Kane agreed to have Gibbons on the scene of battle three weeks before the match. Carpentier signed articles Wednesday and was seen in New York for the world's light-heavyweight championship.

Time losses plant disease such as rust, smut, and blight, and it also makes available for plant growth such food elements as potassium, phosphorus, and other mineral elements in acid soils available for plant growth. The lime also increases the moisture content of the top layers of heavy soils.—O. A. C. Experiment station.