

DAILY MARKET NEWS, LOCAL AND GENERAL

Including Pendleton Prices and Associated Press Reports

Business Prevails

NEW YORK, June 25.—(A. P.)—Business on the stock exchange yesterday was comparatively dull and narrow.

Speculative favorites, especially those embracing the oil, steel, motor and chemical groups, were fairly steady and occasionally strong.

Deals in exchange were light and mainly downward. Liberty B's were strong, but others of that division recorded mixed changes.

Fast Reports Bring Strength to Wheat

CHICAGO, June 25.—(A. P.)—Black rust in its damaging stage was reported yesterday from three counties in South Dakota, and the wheat market ranged higher, most of the time as a result.

With the South Dakota harvest still three weeks off, the chances for injury on a large scale to the wheat crop in the northwest were regarded with apprehension by many traders.

Liberal arrivals, together with a lack of sustained buying, had a depressing effect on corn and sympathetically on oats.

Provisions averaged higher with hogs.

Hot Weather Helps Retail Business Some

NEW YORK, June 25.—Bradstreet's today says: High temperatures and the advance of the season have made for some increase in distribution of light seasonal goods at retail and favored a fairly active reorder business from jobbers.

Reflection of this later is had in the not-vitaly important declines shown in wheat prices, despite rust reports from the northwest and advice of premature ripening of winter wheat.

Weekly bank clearings were \$539,885,660.

Wool Holds Its Own On Irregular Market

BOSTON, June 25.—(A. P.)—The Commercial Bulletin says: Business has been irregular in the eastern wool markets again this week, but on the whole there seems to have been slightly more animation than a week ago.

The foreign market show somewhat less strength. Primary markets are generally steady.

The goods markets have been rather inactive this week, but the mills are generally well occupied and some manufacturers are putting on night shifts.

Scoured wools: Oregon, eastern No. 1 staple, 78¢ 80¢; eastern clothing, 60¢ 63¢; valley No. 1, 65¢ 70¢.

Territory, fine staple choice, 80¢ 85¢; 1-2 blood combing, 70¢ 72¢; 2-3 blood combing, 48¢ 52¢; 1-1 blood combing, 38¢ 42¢; fine and medium clothing, 60¢ 62¢.

Pulled: DeLain, 82¢ 90¢; AA, 75¢ 85¢; A, 60¢ 70¢.

Mohair, best combing, 27¢ 30¢; best carding, 22¢ 25¢.

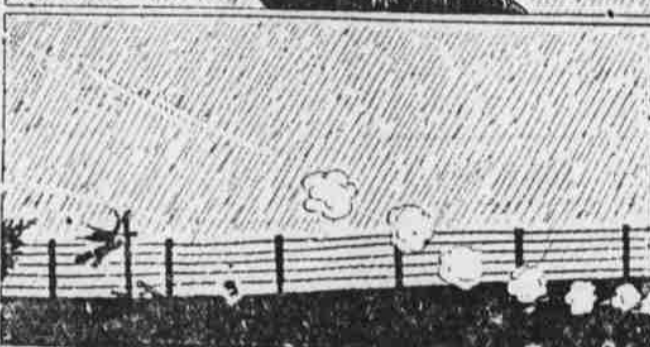
Sheep Take Drop And Hogs Higher

OMAHA, Neb., June 25.—Hogs—Receipts, 10,500 head; market, 10¢ to 25¢ higher; heavy grades up most; choice, eastern, bulk 130 to 240 pound butchers, 48.50; top, 45.60; bulk butchers, 250 pounds and over, 48.50; packing sows, 47.60 48.

Cattle—Receipts, 2000 head; market, slow; beef steers, butcher stock and early sales of yearlings, steady; others, 10¢ to 15¢ lower; all other classes, steady to weak; top steers, 48.35.

Sheep—Receipts, 6000 head; lambs, 50¢ to 1.10; top westerns, 1.10; sheep, weak; ewes, top 1.10.

OUTBURSTS OF EVERETT TRUE



POSTCARD RECEIVED FROM PARIS GIVES GOVERNMENT CLEW

Mother of Member of Crew of 'Mystery' Vessel Gets Message in Son's Handwriting.

WASHINGTON, June 25.—(U. P.)—A colored postcard from Paris to a mother of a member of the crew of the "mystery" vessel which disappeared near Cape Hatteras forms the first clew the department of justice has been able to pick up to establish a definite basis for search of the 20 vessels which are known to have disappeared within the last year.

OFFICE CAT



BY JUNIUS

"Have you a little fairy in your home?"

"No, but I have a little miss in my engine."

He was—well, very, very careful. Each week he went over his wife's cash account, growling and grumbling. Once he delivered himself of the following:

"Look, here, Sarah, mustard planters 50¢, two teeth extracted \$2.00. There's \$2.50 in one week spent on your private pleasure."

Pome

Here lies the body of Jimmy Lake, Tread softly all who pass, He thought his foot was on the brake, But it was on the gas.

If Adam and Eve had lived today

THE OLD HOME TOWN

By Stanley



STANLEY

BANKING SERVICES

The American National Bank can serve your needs efficiently because it knows the problems of Eastern Oregon.

Your account is invited.



The American National Bank Pendleton, Oregon.

"Strongest Bank in Eastern Oregon"

Your Picnic Lunch

Make it complete by taking along our special picnic packer. For your convenience we are carrying assorted flavors of Delicious Golden West Ice Cream in two quart and one gallon cans which we will pack to last all day.

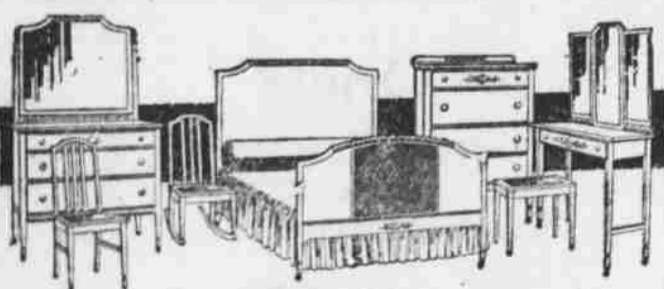
Call up any of the following fountains and give them the size of the picnic packer you want. We'll do the rest.

- COSY THE CRYSTAL
BEN DUPUIS GRIGGS & TRYON
F. E. WELCH ALTA BAKERY
THE DELTA



The Wholesome Butter

Four Piece Ivory Bed Room Set



One of the several sets we are showing. This set consists of bed, dresser, dressing table and chiffonier. This is truly a wonderful buy.

OUR PRICE TODAY \$125.00 Close out price for cash only.

Cruikshank & Hampton

"Quality Counts"

124-28 E. Webb Phone 548

Your Old Furniture Taken in Exchange as Part Payment on New Exclusive Agents in Pendleton for Aerolux (No Whip) Porch Shades.

Beautiful Woolens

Any man who comes here for a tailor-made Suit or Overcoat will simply marvel at the wonderful selection we have.

But we suggest that clothes ordered now will get excellent attention. You'll like the service because we have plenty of time at this season of the year.

John Dorfman

THE TAILOR Rooms 7-8-9 Despain Bldg. Phone 982



If You Use GATES TIRES You Have No Tire Trouble

Gertson & Marty

639 Cottonwood Street—Phone 595

BUICK



This Buick Covered— 1916—1,958 Miles 1917—20,700 Miles 1918—18,000 Miles 1919—22,010 Miles 1920—17,000 Miles Total 88,778 Miles

This Buick Covered— 1918—16,724 Miles 1917—40,230 Miles 1918—18,000 Miles 1919—21,180 Miles 1920—4,500 Miles Total 100,634 Miles

Where the Railway Left Off—

The Uintah Railway terminates at Watson, Utah. Between Watson and Vernal stretches 60 miles of arid desert.

Watson and Vernal is entirely unpaved, across an arid desert, with no habitation save three freight huts.

And yet the public suffers no inconvenience in traveling between these two towns, because the Uintah Railway maintains an unflinching passenger service with two Buick cars.

"In summer the temperature ranges as high as 110°; in winter as low as zero, with the road often covered with 12 inches of snow. The two Buicks have never been off this route—are operating there today."

"The 60 mile road between

Present lines of new Buick six-cylinder models will be carried thru the 1922 season. Beginning June 1st the new series and prices will be as follows, f. o. b. Factory, Flint, Michigan.

Table with 2 columns: Model number and Price. Includes models 22-44, 22-45, 22-46, 22-47, 22-48, 22-49, and 22-50.

(B-94)

Oregon Motor Garage, Inc.

Phone 468

119, 121 W. Court

WHEN BETTER AUTOMOBILES ARE BUILT, BUICK WILL BUILD THEM