

Look These Over

Fresh Ranch Eggs, dozen 50c
 Best Creamery Butter, pound 50c
 Picnic Hams, very lean and meaty, lb. 24c
 Golden Marshmallow Syrup, 1-2 gallon.... 65c
 Good Potatoes (medium size) sack \$1.75
 Table Peaches and Apricots, 2 cans 45c, 6 cans 1.30.

Fancy Hawaiian Pineapple, large cans, 3 for \$1.10, medium sized cans, 3 for 95c, small cans 3 for 55c.

The—Sanitary Grocery

221 East Court St.
 The Most in Value The Best in Quality
 Phone 871

Seattle Feed Range \$71.00 to \$87.00.
 SEATTLE, Feb. 5.—City Delivery:

Feed—Scratch feed \$58 per ton; baby scratch feed \$71; feed wheat \$64; all grain chop \$48; oats \$46; rolled oats \$49; sprouting oats \$51; rolled barley \$47; clipped barley \$52; milled feed \$39; bran \$37; whole corn \$40; cracked corn \$42.
 Hay—Alfalfa \$27 per ton; double compressed alfalfa \$33; ditto timothy \$28; eastern Washington mixed \$34; straw \$20; Puget Sound \$31.

Butter Firm Eggs Weak
 NEW YORK, Feb. 5.—Butter firmer; creamery higher than extras 46 1/4 @ 47c; creamery extras 46c; creamery firsts 41 @ 45c.
 Eggs weak; fresh gathered extras firsts 54; fresh gathered firsts 51 1/2 @ 52c.
 Cheese staidier, unchanged.

Dr. Lynn K. Blakeslee
 Chronic and Nervous Diseases and Diseases of Women. X-Ray Electric Therapeutics.
 Temple Bldg. Room 15
 Phone 414

CHICHESTER'S PILLS
 THE DIAMOND BRAND
 "The Best and Most Reliable" Pills in the World
 For Constipation, Biliousness, Indigestion, Headache, Neuralgia, Rheumatism, Backache, Stomach Ache, and all ailments of the Digestive System.
 Made in England.
 Sold by Druggists Everywhere.

Electric Heaters

INSTANT WARMTH

Bathroom, bedroom, every room. Attach any where to light circuit

J. L. VAUGHAN
Phone 139 206 E. Court

Silver Lining

Without clouds there would be no silver lining. The gray skies of business will disappear, and sunshine will again prevail. The worst of the strain is over, for the signs of relaxing tension are more and more evident.

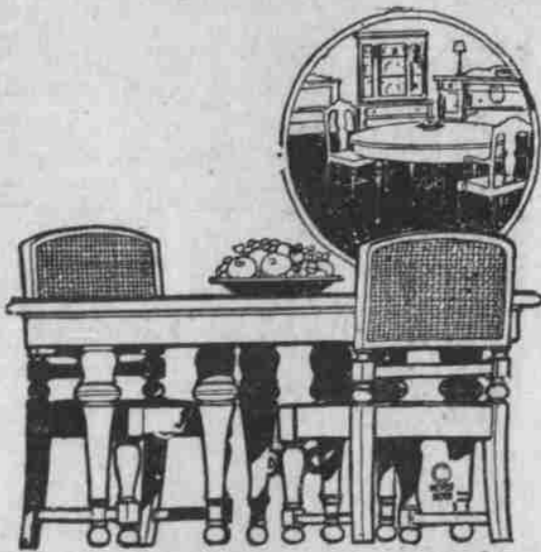
Foremost business experts claim that this year will develop order, stability and prosperity the country over.

Your banking business is invited



The American National Bank
Pendleton, Oregon.

"Strongest Bank in Eastern Oregon"



Dining Room Furniture

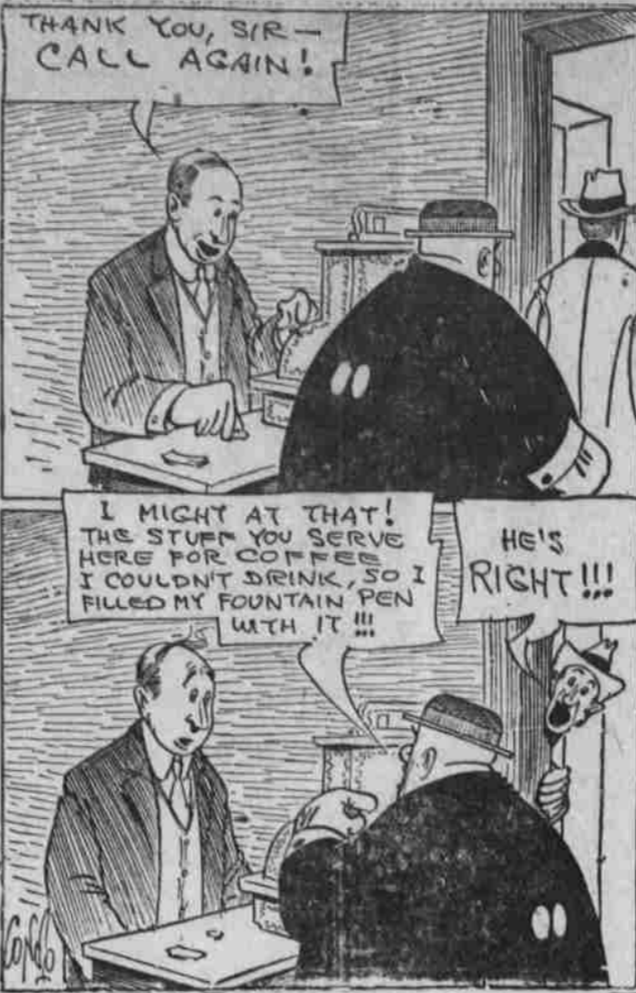
Many beautiful sets to choose from in light or dark Oak, Fumed, Mahogany and Walnut Woods—made in William and Mary, Queen Anne and Cromwellian Designs.

Cruikshank & Hampton

"QUALITY COUNTS"

124-28 E. Webb Phone 548
Your Old Furniture taken in exchange as part payment on new.

OUTBURSTS OF EVERETT TRUE



DAILY MARKET NEWS, LOCAL AND GENERAL

Including Pendleton Prices and Associated Press Reports

STOCK MARKET NEWS OF HOPEFUL CHARACTER

NEW YORK, Feb. 5.—The stock market resumed its reactionary trend at the outset of today's session, but soon reversed its course, mainly on short covering and closed with a majority of gains, some of material proportions. News of the day was of a more hopeful character, embracing the reassuring statement of Governor Harding of the federal reserve board, better commercial advices and a court decision granting a two fare rate to one of the Brooklyn trolley lines.

Encouragement Felt.

Encouragement was felt in industrial circles at the progress reported in the proposed sale of 400,000,000 pounds of copper to foreign interests although metal shares made only casual response to this development.

Monetary conditions also were better. Call loans renewed into the coming week at 8 per cent, holding at that figure throughout the day, in contrast to recent late advices at 9 per cent.

Foreign Exchange Dull.

Following the usual course, oils steel, shippings and several of the better known rails comprised the bulk of the day's moderate offerings, Mexican and Pan-American Petroleum, Crucible, Atlantic Gulf and Reading, and Southern Pacific closed at gains of 1 to 1 1/2 points, but Northern Pacific recently the strongest feature, reacted. Sears Roebuck led the specialties, advancing 2 5/8 points. Sales amounted to 550,000 shares.

Dullness ruled in the foreign exchange market, sterling and most continental bills easing, with the exception of remittances to Holland and Spain. The Shanghai rate also fell back on bar silver's decline in London.

Bonds Desultory.

Dealings in bonds were desultory, most falls reflecting the heavy trend of stocks. Liberty issues were irregular but closed mostly at gains. Total sales, par value, \$10,250,000. Old U. S. 2s were off 3/4 per cent on calls and the coup. 4s 1-4 per cent.

WOOL MARKETS NOT SO KEEN IN LAST 2 WEEKS

BOSTON, Feb. 5.—The Commercial Bulletin today said:

"Business in the wool markets during the past week has been hardly so keen as during the preceding fortnight, although some demand is in evidence, more especially for fine and fine medium domestic wools at about the rates previously prevailing. The government caused considerable resentment on the part of buyers by cancelling the wool auction scheduled for Thursday with only 24 hours' notice and without explanation.

"The manufacturing situation is without material change, weavers spinners and combers reporting very moderate business at steady rates. The emergency tariff bill is generally believed to be a dead issue."

Scoured basis:

Texas—Fine 12 months, 70@80; fine eight months 55@60.

California—Northern 78@80; middle county 75; southern 55.

Oregon—Eastern No. 1 staple 80@85; eastern clothing 60@65; valley No. 1, 65.

Territory—Fine staple choice 55@58; half blood combing 75@80; 3-5 blood combing 53@56; quarter blood combing 40@45. Fine and fine medium clothing 65@70.

Pulled:

Delaine 85@90; AA 80@85; A supers 55@65.

Mohair—Best combing 30@32; best carding 25@27.

All Cattle Uneven.

Underdone Weak
KANSAS CITY, Feb. 5.—Cattle 900; all classes uneven, but mostly steady; underdone decidedly weak; late on beef steer and she stock; steer sales 6.25@7.50; prime heavy cows 5.00; fairly good heifers 2.25; other sales she stock 4.25@5.75; desirable yearlings mostly 10.00@19.50; good 3.00 to 4.00 pound calves 5.00@6.25.

Sheep 1,300; steady; bulk fat ewes 4.00@4.50; lambs fully 25c lower; 75 pound fed lambs 9.00.



AT THE SIGN OF THE PEACOCK

HEAT IS THE SOUL OF "PEACOCK" COAL

Phone 178

Smythe-Lonergan Co.

Quality Quantity Service

Lower Farm Implement Prices

The break has come. For sometime prices paid for your farm products have been low. It is but natural for you to want lower prices on the farm implements used in producing your crops.

Announcement is made by the Oliver Chilled Plow Works of a general price reduction in their lines that brings prices to the basis of 1918. They are the first to make this reduction and are taking the loss that the move brings—for there has been little reduction in labor or material—as their

contribution in hastening a return to normal conditions.

This is your opportunity to secure new, up-to-date Oliver quality implements that will help you produce a full crop, and get them at a price in line with the reduced prices on your farm products.

Sturgis & Storie

PENDELTON

WALLA WALLA

Quality PRINTING at Reasonable Prices—
East Oregonian Printing Department.



BUICK



BUSINESS men and professional men, in choosing a car, place dependability first.

That is why so much of the important work of the day is entrusted to Buick.

For those calls where time is important and getting there essential, Buick can be depended upon for swift, sure transportation.

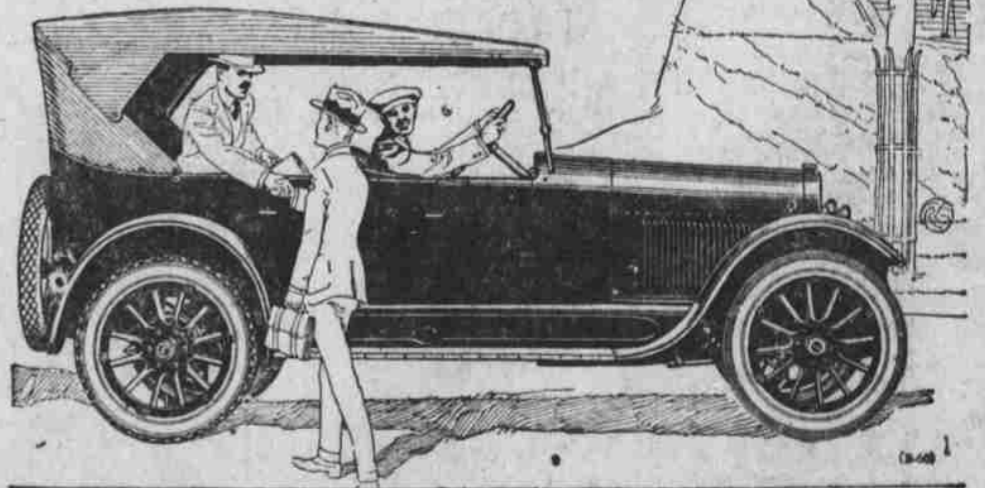
You will find among the new Buick Twenty One Models—the car which exactly suits your business needs and the needs of your family.

The mechanical excellence of the car you choose is backed by a nation-wide authorized Buick Service.

Prices of the New Nineteen Twenty One Buick Series

Model Twenty One-Fifty Four, three passenger car	\$1995
Model Twenty One-Fifty Four, five passenger car	1995
Model Twenty One-Fifty Six, four passenger coupe	2810
Model Twenty One-Fifty Seven, five passenger sedan	1129
Model Twenty One-Fifty Eight, four passenger coupe	1115
Model Twenty One-Fifty Nine, seven passenger car	2290
Model Twenty One-Fifty Nine, five passenger sedan	1345

F. O. B. Pacific Coast Terminal Points



Oregon Motor Garage, Inc.

Phone 468

119, 121 W. Court

WHEN BETTER AUTOMOBILES ARE BUILT, BUICK WILL BUILD THEM