

# Fresh Ranch Butter

- Fresh, pure and clean, 2 pounds .....\$1.25
- Ranch Eggs, dozen ..... 35c
- Country Bacon, pound ..... 45c
- Country Shoulders, pound ..... 35c
- Country Lard. Bring your own pail  
We fill 5's, \$1.50; 10's, \$3.00
- Early Rose Seed Potatoes, pound ..... 10c
- Burbank Seed Potatoes, pound ..... 10c
- Yakima No. 1 Eating Potatoes, pound ..... 08c
- Onion Sets, pound ..... 15c

"If you don't trade with us we both lose money."

## Gray Bros. Grocery Co.

"QUALITY"  
TWO PHONES—28 AND 29

# The Wheat Price Situation

The Banques D'Anvers gives us the following information regarding the grain condition in Belgium: "Before the war Europe was dependent on North America for its grain supply and during the war this need became more intensified. Through the interior difficulties in Russia, their grain exports ceased entirely, and lacking in laborers, horses and machinery, the acreage in Roumania, Bulgaria and Serbia, was reduced to a minimum. The Royal Wheat Commission which, during the war, purchased all wheat for the Allies, did so by preference of North America rather than from the Argentina, for the reason that it required less time and thus less tonnage. Since the signing of the Armistice the government still gives North America trade preference, but unfortunately the persistent rising value of the dollar, compels us to buy more and more from Argentina."

## THE AMERICAN NATIONAL BANK

PENDLETON, OREGON

"The Strongest Bank in Eastern Oregon."

# Used Cars

of exceptional merit and condition -- for sale or trade

- 1918 Cadillac
- 1918 Reo Six
- 1917 Velie

EASY TERMS

## Eastern Oregon Motor Co.

616 Garden St., Near P. O. Phone 1027

# REPUBLIC Trucks

Everywhere you go you see Republic Trucks doing the big hauling jobs.

Because Republic Trucks are noted for their ability to do harder work, for a longer time, at a lower cost.

## Pendleton Auto Co.

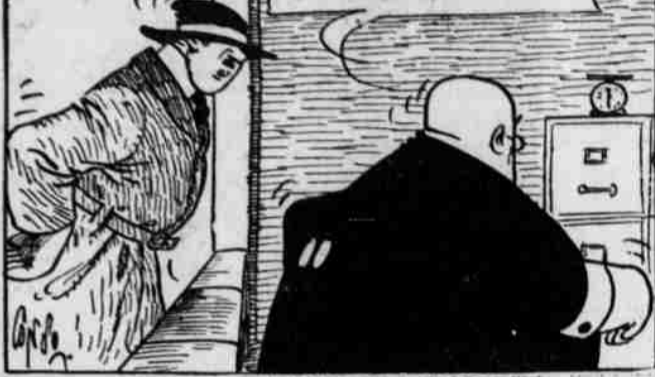
Established 1907

### OUTBURSTS OF EVERETT TRUE

AM, MORNING, SIR! I UNDERSTAND YOU'RE LOOKING FOR A NEW OFFICE MAN! IF YOU HAVEN'T FOUND ONE YET, I'M YOUR PRIZE!!



YES, I WANT A NEW OFFICE MAN. I WANT A NEW ONE, BUT NOT A FRESH ONE!!!



### DAILY MARKET NEWS, LOCAL AND GENERAL

Including Pendleton Prices and Associated Press Reports

The following prices are the prices being paid to producers by Pendleton business houses. Wherever retail prices are given the fact will be specially mentioned.

- Eggs and Poultry.**  
Eggs, 25.  
Hens, 25 cents.  
Chickens, 25 cents a pound.  
**Country Ham, Etc.**  
Ham, best quality, 28c.  
Bacon, best quality, 40c.  
**Butter Fat and Butter**  
Butter, \$1.25.

**Kansas City Stock Limited to Sheep.**  
(By Associated Press.)  
KANSAS CITY, Mo., April 14.—Cattle—No receipts, trading limited to a few sales to hold-over stock at prices too unsteady to intelligently quote.  
Sheep—3,990. Receipts direct to packers. Trading restricted to few sales hold-over lambs. Steady with yesterday. Five loads 88 pound lambs \$13.50.

**Corn Lower at Chicago**  
Wheat Sells at \$2.  
(By Associated Press.)  
CHICAGO, April 14.—Corn averaged lower in price today with traders holding off on both sides of the market awaiting developments in the railroad strike. The close was unsettled 1-2c net lower to 3-8c advance, May 1.66 5-8 to 1.66 7-8 and July 1.59 to 1.60 1-8. Oats finished 3-8c down to 1-4c up and provisions unchanged to 39 cents off.  
Weakness in the corn market was ascribed to lack of support, rather

than to aggressiveness on the part of the sellers. Toward the end, current talk of a good export demand for wheat, rice and corn led to a rally in the corn market. Wheat commanded \$3 track New York, the highest price on the crop. A few more cents indicated the changes in corn.  
Packers were sellers of provisions, but on the ensuing break turned to the buying side. Lard touched the lowest price this season.

**Seattle Hogs and Cattle**  
25 Cents Up for Day.  
SEATTLE, April 14.—Hogs—Receipts 533; 25 cents up. Prime 16.75 @ 17.25; medium to choice 15.75 @ 16.75; rough heavies 14.75 @ 15.25; pigs 13.50 @ 14.50.  
Cattle, receipts 309; 25 cents up. Best steers 11.50 @ 12.00; medium to choice 9.25 @ 11.00; common to good 7 @ 9.25; cows and heifers, 12 @ 16.50; common to good 6.50 @ 9.50; bulls 7.00 @ 8.25; calves 7.00 @ 15.00.

**Seattle Markets Show Coarse Grains Steady**  
(By Associated Press.)  
SEATTLE, Wash., April 14.—City delivery: Feed mill \$45 @ \$46 per ton; scratch feed \$35; feed wheat \$35; all grain chop \$75; oats \$72; sprouting oats \$57; rolled oats \$74; whole corn \$75; cracked corn \$78; rolled barley \$76; clipped barley \$81.  
Hay, Eastern Washington Timothy mixed \$42 per ton; double compressed \$46; alfalfa \$49; straw \$29; Puget Sound \$38.

**Portland Yards Receive No Shipments for Day.**  
Because the Southern Pacific refused to bring supplies on Tuesday, its regular day for shipments of Willamette valley livestock to North Portland, there were no arrivals here during the day.  
Trade in the cattle alleys was absent for the day but all indications pointed to a continuation of the strong tone of the last few days. Quality stuff, especially is being sought because there is little of this class available. Because of the previous drop in the market many cattle feeders sent their stuff to grass.

With shearing operations practically suspended at most Pacific northwest points because of unfavorable weather, arrivals of late in the stockyards have been scant. Nothing at all came forward for the Tuesday trade. Market for hogs continues to display a very satisfactory tone. Killers are still compelled to bring in stock from the midwest because of the inability of the home trade to fill the demand.

**New York Pays Less Attention to Strike.**  
(By Associated Press.)  
NEW YORK, April 14.—Traders and professional interests almost as a whole seemed disposed to pay less attention to the strike today, basing their confident attitude on the belief that the strike is waning.

The stock market was strong only in spots, however, food shares, secondary steels, equipments, shippings and miscellaneous specialties making variable gains while industrial leaders were irregular and occasionally heavy. Conditions in the money market were not materially altered, call loans opening at seven percent and advancing to 12. Time funds were increasingly scarce.  
Foreign exchange rallied from its depression, due chiefly, it was believed to reduced offerings. British, French and Italian bills made up part of yesterday's reversal but the German mark broke sharply.

Fresh interest attached to the gold export movement by reason of further extensive engagements of the metal for shipment to South America.  
Sales 1,050,000 shares.  
Bonds did not share the strength of the stock market, that division suffering further impairment from the weakness of Liberty and Victory issues. Total sales (par value) \$13,375,000. Old United States two rose 3-8 on call, and Panama 3's declined 1 point on call, others unchanged.

**Grain Bag Market Here Shows Firmness at 22 Cents.**  
Grain bags are being quoted by local dealers at 22 cents to the buyer, a rise of one cent over the previous quotation. The strength of the market at San Francisco is responsible for the rise. San Francisco is quoting June delivery grain bags at 22 cents wholesale to the trade.

**Reports From Entire Wheat Area Are Encouraging.**

Reports from all the big wheat sections of the northwest are encouraging, following the general rains of the last few days. The winter crop, its backward but the condition of the growing plant is good. There has not been nearly so much acreage blown as was at first thought and not as much loss was sustained as two years ago. The wheat plant at present is not very strong and the present weather, without too much heat is expected to put the plant in shape for warmer weather later. The condition of the crop is estimated around 85 per cent.

**Foreign Exchange Generally Shows Decline for Day.**  
With the exception of the German mark, the foreign exchange market yesterday showed a tendency to drop. The mark was quoted at \$2.20 at the close, a gain of 25 cents over the Monday report. Sterling lost three cents and is quoted \$4.92. France lost 25 cents and are at \$6.15. Kroner on Norway are \$20.20 and on Sweden \$22.20. Drachmas on Greece remained at \$11.40.

**WOMEN'S COMPETITION DELAYED**  
NEW YORK, April 14.—Inability of European nations to send representative women tennis teams to America to compete for the Wightman cup probably will delay the inauguration of this international competition on the plan of the Davis cup until next year, the United States Lawn Tennis Association, announced tonight.

J. C. Penney Co., A Nationwide Institution



## Becoming House Dresses of Serviceable Gingham

\$2.98

Fresh, bright colorings that give the house dress that cheerful homelike appearance, pretty checks, stripes and plaids, attractively made, some with button trimmed shawl collars and vestees of self material, belted models with collars of plain harmonizing colors, while others are embellished by pretty embroidery, all at the same low price

\$2.98

## TRICOLLETTE BLOUSES

Of Unusual Appeal.

Tricollette blouses are growing in favor every day. Colors of tempting tint coupled with wearing qualities that make the investments of thrift accounts for their popularity.

Many new numbers are shown in the apparel section on the balcony, priced at

\$10.90, \$11.90, \$14.75

J. C. Penney Co., A Nationwide Institution

## NEW CHILDREN'S COATS

A new assortment of coats for children from 3 to 16 years, offer colors, cheerful and becoming, fabrics fashionable and serviceable.

A hint of the styles and colors may be had from the display in our large main window. Prices are as tempting as the garments themselves.

\$5.90 to \$17.50

## NEW FEATHER NECK PIECES

\$5.90 to \$27.50

These new Marabout pieces add a smart finish to any suit and at the Penney prices every woman may own one. A number of the new pieces are shown in the south island window.

### MITIGUE TO MEET FERGUSON

(By Associated Press.)  
HALIFAX, N. S., April 14.—Mike McTigue, Canadian middleweight champion, meets Danny Ferguson, Philadelphia, here May 20.

### FRENCH TRYOUTS AN MAY 9

(By Associated Press.)  
May 9 will be the official date on which French athletes will hold their first series of elimination trials for the purpose of selecting the French American Olympic team.

## Grand Opening

MONDAY, APRIL 12TH  
COMPLETE LINE OF FRESH MEATS.

Coffee and Sandwiches will be served between 10 and 11 a. m., 3 to 4 p. m.  
CURED MEATS, LARD, ETC.

- Holly Hams, per pound ..... 42 1-2c
- Holly Breakfast Bacon, per pound ..... 48c
- Holly Blue Label Bacon, per pound ..... 45c
- Holly Picnics, per pound ..... 28c
- Holly Boston Butts, per pound ..... 40c
- Holly Backs, per pound ..... 38c
- Holly Hamburger, per pound ..... 30c
- Holly Sausage, per pound ..... 25c
- Holly Wonnies, per pound ..... 25c
- Holly Head Cheese, per pound ..... 25c
- Holly Bologna, per pound ..... 25c
- Holly Lard ..... gal. \$2.50, 1-2 gal. \$1.45

INLAND MERCANTILE CO.  
ADAMS, ORE.



Why suffer the discomforts and embarrassments of a Goitre?  
O. G. C. preparation for goitre has been used many.  
Why pay several hundred dollars for an operation to remove a goitre when O. G. C. can be obtained for such a comparatively small expenditure?  
O. G. C. when properly applied gives satisfactory results, or your money will be refunded. O. G. C. is sold direct, by mail only. Write for booklet.  
Address Dept. 2  
O. G. C. CHEMICAL COMPANY  
Seattle, Washington

## Lease For Sale

HOW DOES THIS STRIKE YOU?

1280 acres, leased for two years and lease can be renewed to good farmer; 480 acres in fall wheat, all looking fine; 120 acres plowed; balance pasture, combine, plows, harrows, drill, wagons and other farming machinery. Some stock and cows.

The price on this lease and outfit is \$12,000.00, (flat cash will handle. This is the only lease we have, and is worth the money.

We have several good alfalfa propositions dairy ranch that is an excellent proposition; also lots of good wheat land.

If you are interested in CANADA LANDS, see us.

## Snow & Dayton "We Sell Land"

Phone 1072. 117 East Court Street.

Real Estate Farm Loans Insurance

# USED BUICKS

We have some exceptional values in used Buicks, 1917, 1918 and 1919 models.

Come in and look them over.

## Oregon Motor Garage

INCORPORATED  
Distributors  
CADILLAC, HUDSON, BUICK, ESSEX  
AND ACCASON TRUCKS  
Phone 468 119-121 W Court