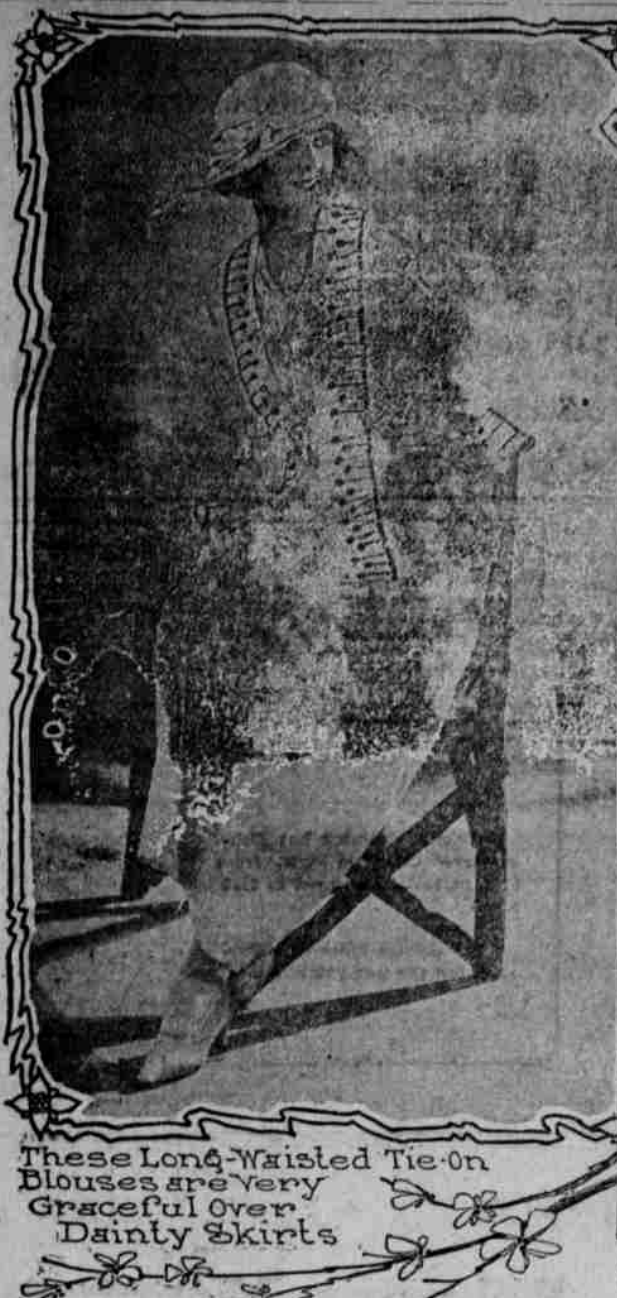


SUMMERY STYLES For the Southland



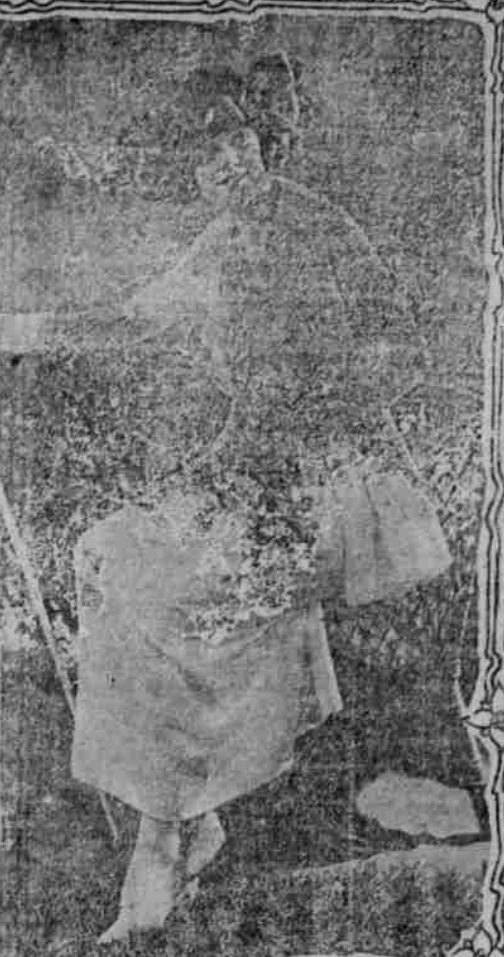
These Long-Waisted Tie-On Blouses are Very Graceful Over Dainty Skirts



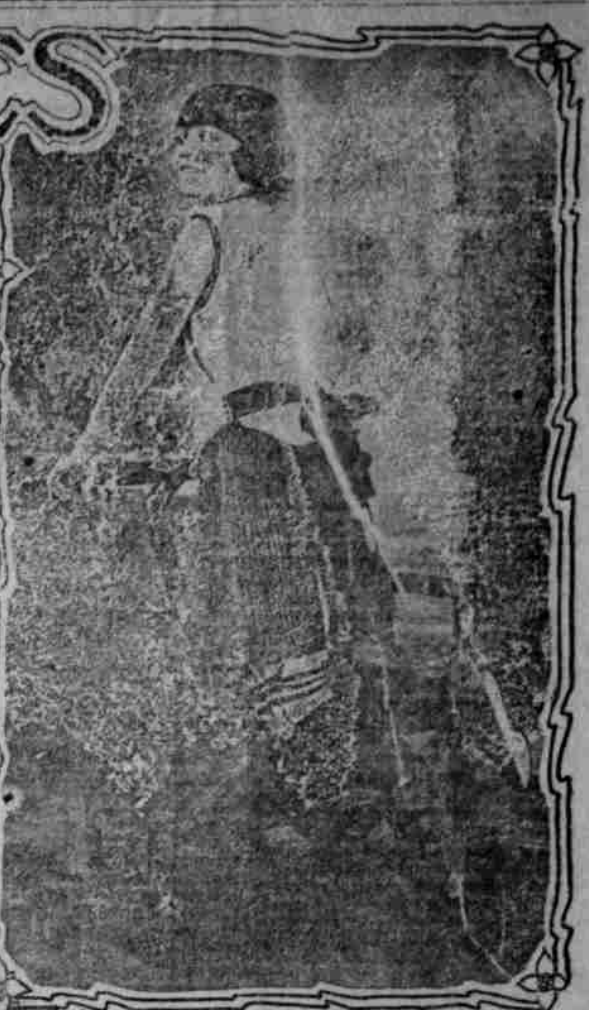
New Tailored Sport Jacket and Skirt of Rich Chinchilla Satin for Palm Beach



Morning Frock of Soft Satin



Particularly Smart Suit of White Satin for the Southland



Palm Beach Bathing Suits have Pleated Skirts and Graceful Sashes

HEADS FOR BABY
THERE is a special necklace for baby; quite a long necklace of wooden beads which baby can play with or even put in his mouth with perfect safety. The beads are of smoothly polished wood without any paint or other coloring matter to be sucked off. There is a small attachment on the necklace so that a rattle or other toy may be hung from the chain of beads.

Chemise Dresses of Linen Have a Summer Morning Freshness - Smart Sport Suits of Chinchilla Satin - Prophecy of a White Summer Verified By Palm Beach Clothes - Fringes and Tassels.

As always, summer fashions arrive as a bit of a shock to those who have been immersed and absorbed by mid-winter and holiday affairs. Christmas has come and gone. The old year has slipped out and young 1926 has slipped in. And behind the shop windows are saying: "Summer is on the way!"

These fortunate beings who are planning now for Palm Beach, Aiken, Bermuda, Hot Springs and other charmed places where the chill blasts of winter are unknown, have every reason to be glad that the dainty summer styles are out so far ahead of their seasonable time. The rest of us feel a bit rushed—in our schedule of winter plans—by the parasols and white sport togs, the bathing suits and tennis sweaters so temptingly displayed for selection. But there is no getting around the fact: Winter is now on the wane and every day carries it toward its vanishment by spring. Already yellow daffodils shed their sunny gleam in florist's windows and good housewives are pouring over garden catalogues. And the summer styles for the Southland are set!

Fabrics For New Frocks
The summer girl is going to dress in silk, in linen or in gauzy voile and lace. These three styles of frock—linen, silk, voile—are paramount among the Southland modes. The smart, crisp looking linen costumes are for morning wear; the sheet voiles for formal afternoon occasions; and the silks are for sport wear. Linen and voile combined she may don in the afternoon but silk she wears when she goes a sporting. A new sport silk has a raised, curly tuft in its weave that gives a corded effect. It is too heavy and closely woven for a whole sport costume, but it makes a stunning trimming in bands, pocket flaps, cuffs, collar and so on. The fabric looks rather like a shaggy ratine made with silk threads and is very much the rage this season. You will note it, used as a trimming, on the pictured sport suit of white chinchilla satin. Nothing could be simpler than the lines of this suit; it is the richness of the material that gives high distinction. The jacket, bordered all around with the corded silk trimming, fits closely over shoulder and arm and there is no collar to break the graceful line. The skirt is deeply hemmed by hand and has pocket flaps of the corded material and pearl buttons.

Beach, Paris dressmakers were so thankful to get linen back, after the war years when it was all corralled by the Government for uniforms and aeroplane wings, that they brought out linen blouses and frocks by the score—as fast as they could lay hands on the linen to make them of. Winter intervened just as women were taking a notion to these dainty linen wearables and it was quite natural that with the beginning of the Palm Beach season they should blossom out into a decided mode. In many cases the linen fabric is combined with voile, dotted swiss or some other summery material and the effect is charming. One of the Palm Beach maids pictured today wears such a combination. Her skirt is of lavender white and lavender grosgrain ribbons are hitched to simulate tucks. Her long-waisted, tie-around blouse is of lavender linen. This graceful new blouse model, with its sash tied low at the back, its long, close sleeves and dainty batiste and lace collar, is so smart an accessory to summer dress that you must be sure to give it special study. You are likely to meet the model later, when real summertime comes! The sport hat is of purple and white chenille with a fringe tassel. Fringes and tassels are everywhere on summer togethery for the Southland.

Palm Beach Always Sets Bathing Suit Modes
Palm Beach swimming costumes are a very important feature of Southland attire and swimming modes for all summer are set at this mid-winter resort. A brand new bathing suit idea, just launched at Palm Beach is pictured. The slashed skirt allows

freedom of movement to the swimmer, for after all, kicking-out is the essential movement in swimming and any skirt that hampers this movement will not be tolerated by a good swimmer. The new bathing suit has the long-waisted, tie-around blouse referred to in an earlier paragraph. This blouse and the knee breeches are of bi-que wool jersey. The pleated skirt, the sash and the pipings and trimmings on blouse and breeches are of black satin. The bathing girl wears stockings well over her knees, and one hopes this portends a failure of the awful rolled-down stocking mode of last summer to extend over into this year. And the bathing stockings are fancifully ribbed at the front—see ribbed silk stockings, or stockings with clocks are worn with all footwear, from bathing slippers to formal buttoned boots for the afternoon.

Sleeves To Be Short
Not a bit of doubt about it—sleeves are to be short, and cool and comfortable next summer! All the Palm Beach frocks say so. That is, nearly all—a few sport frocks and frocks have long, close fitting sleeves. Elbow sleeves are on the dinner frock of indestructible voile and red shown. The color tones of this frock are very soft and beautiful—silvery gray with a printed vine pattern in paler gray is dropped over a slip of Peeking blue cotton. And under this is a second slip of the blue chiffon to make the color denser and render the frock non-transparent. Very handsome white lace is draped to form a little vest, revealing an inner vest of the deep-blue chiffon, and the lace falls in a gathered apron on the skirt. The sash is of silver gray velvet ribbon. Evidently she is to

Go out for the carries a dainty little hat of silver gray straw with pale pink rosebuds.

STUNNING FANS COMPLETE STAGE COSTUMES
EVERY detail of costume in a well put on theatrical production is carefully considered. Even fans are important accessories, not only in the gown they accompany, but in the general color scheme of the back-cloth. A woman's fan is carried in a certain play of the winter—a veritable flame fan. It is made of ostrich plumes in fiery red and golden orange and the feathers begin at the bottom with fire-red, rising in orange to paler orange in flame effect, and to complete the illusion of flame there is a faint, clear blue tint at the top—just as flame burns itself into a bluish tint in a real fire. This fan was enormously expensive but was added as just one detail of a perfect and compelling costume.

PALM BEACH INTRODUCED TO FRENCH FOOTWEAR

SUMMER footwear, what a charm it possesses! Not the least feature of fascination in new Southland wearables are the alluring lies and slippers and sport shoes that go with the dainty clothes one must provide for the mid-winter fitting to warmer climes. And the summer footwear is always ready for Palm Beach—the alert manufacturers see to that. How dreadful it would be to be sure, if one had to begin the Southland season with only the boots and slippers one has in town, to match mid-winter costumes, blossoming out in all the rest of one's attire in summery white and flower tints!

are delightful on the feet but payments are anything but easy on their daintiness. Used for general running about and walking in all sorts of weather they soon grow shabby and shapeless.

not only in the pumps and dancing slippers, but also in buttoned street boots for formal occasions. A very pretty pair of white pumps for Palm Beach wear is shown in a picture. Slipper-pumps they are, of dainty shape, with thin soles and French heels. They fit the foot like a glove and white slipper and silk stockings blend into each other with such smooth continuity of line that there is no conspicuous point of contrast. Foot and ankle are just exquisitely disclosed, that is the effect you get.



An American Modification Of The Fascinating Little French Slipper Tied Coquettishly Over The Instep.

Since this next summer promises to be a "white summer," a great deal of the footwear for Southern use is white. Frocks are of white linen, sport suits are of white linen and silk, afternoon frocks are of filmy white stuffs. All these fetching white costumes demand white footwear to match of course. One may take chance on tan sport shoes with the striped flannel skirt and colorful sweater; but nothing except snow white footwear will answer when the sport skirt is white linen and the sweater white angora or white knitted silk. A very neat white oxford shoe, new this season, is pictured. It is a shoe that will appeal to many wearers. Though such a comfortable sort of shoe for all-day wear, with its moderate heel and good swing under the foot, its lines are trim and graceful and it is a distinctive and dainty little shoe. It pleases the woman who dislikes very low-heeled mannish footwear and is sporty enough to suit the woman who dislikes French heels for informal occasions. It is made of white buckskin with ornamental stitching and perforated trimming and the heel is white—always a becoming feature in a white shoe.



Sport Oxfords Have Neat Lines And Sensible Heels. They Are Of White Buckskin And Clocked Stockings Go With Them.

Some pumps have huge buckles across the front, which bring the pumps into more conspicuous relief but finely made footwear has this glove-fitting, clinging effect so that lines of ankle, instep and foot blend into each other. This is particularly noticeable in the formal boot of buttoned tops which seem to be moulded over instep and ankle, so smoothly and perfectly does the buttoned top of suede or fabric cling to the ankle and so beautifully does this contrasting top blend with the leather part of the boot. Another footwear model for Southland wear is the morning pump of buckskin with a new French heel—rather a low curved heel for the "baby Louis" as it was called last summer, is entirely an American innovation. All Paris heels are high when they are in what the Parisian calls a "Louis" style. The low curved heel is comfortable to wear and it gives dainty lines to a pump. Then there is the low Cuban heel; and the woman who likes very low sport heels on her pumps can affect this style and feel perfectly correct.

Slipper buckles are gorgeous affairs. Some of them are made of cut steel, others are of tiny brilliants. There are also sparkling buckles of jet. They are such square and oblong in shape and make slippers for formal occasions very stunning and very obvious.



White Kid Pumps For Southland Wear Have Slightly Shorter And Less Pointed Toes Than Last Season And Make The Foot Look Smaller.

chinchilla satin is sporty

Chairs You Should Know

ARE you positive you can pick out, at night: A Chippendale chair, A Sheraton-Fancy, A Queen Anne dining room chair, a sturdy Windsor chair, a quaint barrel-back Colonial chair? If you have never studied up this matter of period chairs you will be surprised to find how fascinating the chair subject is. The other day the heirs to an old family mansion called in an antique furniture dealer to appraise some of the "old stuff in the house" preparatory to an auction sale. None of the pieces were especially for the old furniture dealer's eyes.

Mexican Water Jug for the Guest Room

VERY smart are the Guadalajara pottery jugs and goblets with their quaint shapes and splendid coloring. They come in sets of water carafe, goblet and tray and are suitable for the guest room or for a man's room furnished in rich rather than dainty colors. The goblet may stand in the tray, or the tray may be used for cigar ashes. Water will keep surprisingly cold all night in one of these porous Mexican carafes.

How To Launder Ecu Window Draperies

SOMETIMES the smart ecru curtains that give such a golden tone to the brown living room, come out of the wash sadly pallid, all their rich ecru tint departed and their general tone a soft cream which though bright enough as cream, is not the ecru selected for that particular curtains should be laundered in cold water. First in cold water, then in warm water, then in a solution of one part of soda ash to ten parts of water. Then press out all the moisture you can, when the curtains may be laid flat on a clean surface, or dried on curtain frames.

dist. loosened by an over-night soaking in cold water, will come out ready to be hung. Into the rinsing water put a solution of saffron which will give your curtains the stunning ecru tint they had when new. Five cents worth of saffron may be added to a quart of water and boiled for a moment. Strain and add to the rinsing water. Save a little of the saffron water for the starch water into which the curtains go last of all. Then press out the water without wringing; spread the curtains between clean sheets and press out all the moisture you can, when the curtains may be laid flat, or dried on curtain frames.