

One Car-Load of Weston Mountain POTATOES

FROM THE CHAS. MAY PLACE ON WESTON MOUNTAIN

To Arrive This Week

THESE POTATOES ARE EXTRA FINE GRADE OF NETTED GEM

IF IN NEED OF QUALITY POTATOES FOR WINTER USE, SEE OUR STOCK BEFORE YOU BUY.

Our 1300 lb. Cheese Is Cut

On display in our north window. Don't fail to see this mcnster cheese and get your share. The larger the cheese the better the quality.

1b. 55c

Spanish Olives, pint 30c.
Extra fine variety of apples

Gray Bros. Grocery Co.

"QUALITY"

Two Phones, 28 823 Main St.

OUTBURSTS OF EVERETT TRUE.



Pendleton Market News

The following prices are the prices being paid to producers by Pendleton business houses. Wherever retail prices are given the fact will be specially mentioned.

Eggs and Poultry.
Eggs, 75c.
Hens, 16 to 20c.
Spring chickens, 20c a pound.
Country Ham, Etc.
Ham, best quality, 28c.
Bacon best quality, 49c.
Butter Fat and Butter
Butter, \$1.15 a roll.
Potatoes.
New potatoes, 2c a pound.

Corn Advances 50 Cents;
Other Grains Steady.
Corn in both grades advanced 50 cents a ton today going to \$60 and \$52.50. Oats showed strength at \$52, \$53.25 and \$54. Harley showed slight advances, No. 2 going to \$45 a ton, standard feed to \$66 and No. 3 blue to \$66.50. Mill feed is still \$28.50.

Portland Highest Hog Market; Eastern Lambs Arrive.
Portland continues to be the highest priced hog market of all the nationally known stockyards.
General hog market range:
Prime mixed \$16.00@16.50
Medium mixed 15.00@16.00
Rough heavies 14.00@14.50
Pigs 14.50@15.50

Lack of liberal offerings in the steer division aided that branch of the trade to retain a steady tone with unchanged prices for the week's opening. There was a liberal supply of cows in sight but demand continues good and prices were maintained generally.

General cattle range:
Best steers \$9.00@10.50
Good to choice steers 9.00@9.50
Medium to good steers 8.00@9.00
Fair to good steers 7.00@8.00
Common to fair steers 5.50@6.00
Choice cows and heifers 7.75@8.25
Good to choice cows 6.50@7.50
and heifers 5.50@6.50
Medium to good cows 5.50@6.50
and heifers 4.75@5.75
Canners 3.00@4.00
Bulls 5.00@6.50
Best light calves 14.00@16.00
Heavy calves 8.00@13.00
Stockers and feeders 7.50@9.25

There was a supply of East of the Mountain lambs on the market Monday and in general the trend of the trade was of very favorable character. Prices were maintained generally during the morning.

General lamb and mutton range:
Best east of mountain \$11.25@12.25
Stockers and feeders 10.75@11.25
Valley lambs 8.00@9.00
Yearlings 7.50@8.50
Wethers 5.00@7.00
Ewes 5.00@7.00

Sugar Situation Somewhat Relieved by Car's Arrival.
While the sugar situation was somewhat relieved by the arrival of a carload of sugar in Pendleton, the shortage is still felt and grocers are adhering to the rule of 25 cents worth of sugar to local customers and 50 cents worth to out-of-town customers. The carload of sugar was distributed locally and to consumers throughout the county. No definite date is known as to the arrival of another carload.

EASE THE PAINFUL RHEUMATIC TWINGE

Sloan's Liniment will bring comforting relief quickly.

NEVER brooks faith, Sloan's Liniment doesn't. Just penetrates without rubbing and eases the external pain and ache, rheumatic twinges, lumbago, neuralgia, sciatica, lame, sore, strained muscles, bruises, sprains.

For 38 years it has gone ahead winning new friends, holding old ones, strengthening its reputation as the World's Liniment. Clean, effective in relieving the aches and pains of men and women, this old family standby can be relied upon to do its work promptly and surely. Don't be without a bottle another day - keep it handy.

All Drugists - 35c., 70c., \$1.40.



Commercial Stability

A community is most prosperous when business is stable, and its workers well employed and when finances are handled by men and institutions whose ability and integrity are unquestioned.

The steady growth and development of business is very good evidence that Pendleton's commerce is stable and that its finances are in a sound condition.

THE AMERICAN NATIONAL BANK PENDLETON, OREGON

"Strongest Bank in Eastern Oregon."

Used Cars!

- 1-1916 Ford Roadster.
- 1-1918 Paige, 5 passenger, 6 cylinder, run 800 miles.
- 1-1917 Paige, 7 passenger, run 6000 miles.
- 2-Series 9 A Franklins.
- 1-Series 9 B Franklin.
- 1-Series 7 Franklin, new cord tires.
- 1-1 ton Republic Truck.
- 1-1 1-2 ton Republic Truck.
- 1-3 1-2 ton Duplex Truck.

Pendleton Auto Co.

Established 1907

"PEACOCK" COAL

A Welcome Substitute for SUMMER

Phone 178

SMYTHE-LONERGAN CO.

Quality Quantity Service



J. C. Penney Co., A Nationwide Institution

NEW SUITS

FOR MEN AND YOUNG MEN

New Arrivals—Suits that were bought months ago—all wool fabrics—High Class Tailoring—Models that are right up-to-the-minute—for immediate and spring wear.

We are showing some exceptionally fine suits at \$39.50 and \$42.50

FOR THE YOUNG MAN GOING TO SCHOOL

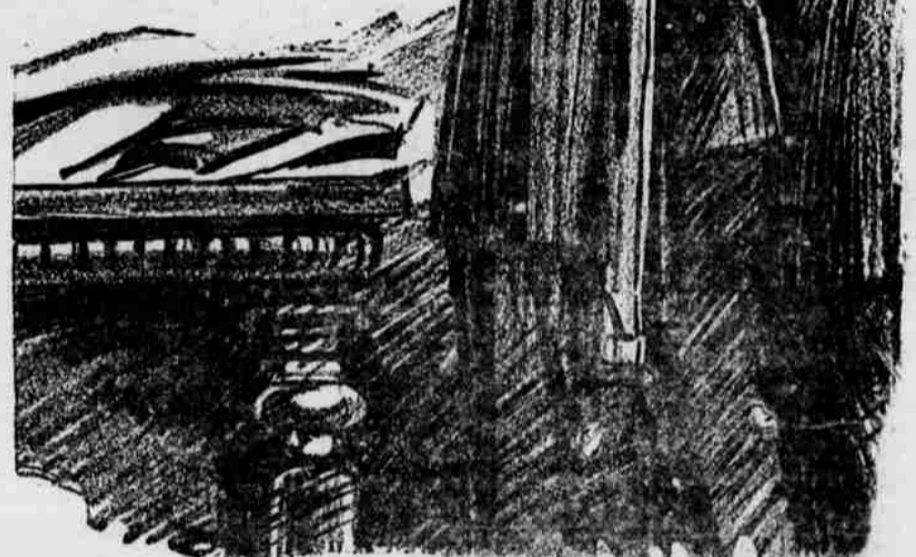
You will find here style without extravagance—new models—new fabrics.

\$19.75, \$24.75, \$29.50, \$34.75

FOR THE MAN WHO LIKES A BLUE SERGE SUIT

Extremely big values you will find here in an all wool serge. Sizes 38 to 46 only.

\$24.75



J. C. Penney Co. Incorporated

197 BUSY STORES

PENDLETON, OREGON OPPOSITE HOTEL PENDLETON

J. C. Penney Co., A Nationwide Institution

ly and to consumers throughout the county. No definite date is known as to the arrival of another carload.

Advance in Price of Potatoes is 50 Cents.

The Weston Mountain potato crop is not so good as was expected, according to growers of that section who have been digging the crop. The price, retail has advanced from \$3 for 100 pounds, to \$3.50. Grocers are paying a wholesale price of \$2.85 for the potatoes. Cold weather delayed the digging of the Weston Mountain crop. Word from Canada says that the potato crop there was frozen and the loss was great.

Unless paid to attend other people's business a wise man attends to his own.

They once tried to shut a woman up in a lunatic asylum—but she kept right on talking.

SOLDIER NOT DEMOBILIZED UNTIL HE IS EMPLOYED

Uncle Sam's big job of finding jobs for all demobilized soldiers and sailors is now on a post-war basis. The central office is in Washington, and there are branch offices in Boston, New York, Indianapolis and San Francisco, which maintain a force of field representatives who travel from town to town supervising the work and keeping in touch with the 3,300 soldier employment bureaus scattered throughout the United States.

A double duty is now put upon the War Department, for the reason that the United States Employment Service has practically ceased functioning, because of lack of funds. Gen. W. G. Haan, now in charge, has recast the entire personnel, and in addition to a force of commissioned officers who are experts, he has the services of thousands of volunteers and dollar-a-year men, as well as all the welfare organizations. The latter have not only contributed liberally of their funds, but have also given the use of their buildings, office furniture, and paid employees.

"No service man will be considered demobilized until a job has been found for him," declares General Haan.

With the coming of winter men who have been taking life easy will now seek employment. In thousands of other cases men who have had sea-

HERMAN CLAUSSENIUS CO. Special Agent

IDAHO STATE LIFE INSURANCE
An Old Line Company that does all its business in the west.
Claims paid on the day of the funeral. All assets, except U. S. Gov't Bonds, are in western securities of substantial worth. Res. office 104 Jackson St., P.O. Bx 33, Phone 281-W

MOTHERS
Reduce your doctor's bills by keeping always on hand—
VICK'S VAPORUB
"YOUR PAINCURIER" - 30¢, 60¢, \$1.20

DR. H. M. HANAVAN
DENTISTRY
Room 7, Temple Bldg.
Phone 772

1918

Hudson Speedster

For Sale

Good Condition

Oregon Motor Garage
BUICK HUDSON CADILLAC
Distributors