

Pie Sale

TODAY FROM 4 TO 6 P. M.

By Miss Boyd's Sunday school class of the Episcopal Church.

If you can not come, use the phone as they will not last long.

Gray Bros. Grocery Co.

"QUALITY"
Two Phones, 28 823 Main St.

Working Down Working Up

Once in a while a rich man's son or relative is put on a top-notch job, and things SEEM TO be coming his way all the time. Do not let him worry you, he may not last. Probably he will WORK DOWN while you are WORKING UP, if you but work hard, keep thrifty and save.

Start a Savings Account today and keep adding to it systematically and persistently.

SAVINGS DEPARTMENT

THE AMERICAN NATIONAL BANK
PENDLETON, OREGON

"The Strongest Bank in Eastern Oregon"

Chevrolets

PROVING THEMSELVES

To the best of our knowledge we have not a single dissatisfied customer.

For country work, roustabout purposes, salesmen and general purpose cars, they have registered highly efficient.

The new 1920 models have a new improved spring suspension and more clearance, pantosote top and a better grade of upholstery.

In the used car market a Chevrolet will bring more money per car than any car under \$1250.

Has proved to be the most economical car to operate on the American market. Every few days finds some big organization adopting the Chevrolet as their standard car. California Merchants' Protective Association and Fleischman Yeast Co., are two organizations who have but recently added this car disposing of all other makes.

Standard Oil Corporation of California, gives some interesting figures on economy of operation of the Chevrolet.

We have a new financing plan for purchasers of Chevrolets.

Eastern Oregon Motor Co.

Near Postoffice,

CHEVROLET, VELIE, PEERLESS

Grab These Leases

560 acres with complete set of stock and machinery, combine, straw and hay. This is a very good proposition for the price asked, which is \$5,900.00.

548 acres close to Pendleton, with 330 acres summer-fallow now being seeded. Complete set of machinery, horses, harness, cows and hogs. \$3,000 an acre will be added after seeding is done. Price now \$7,000.00.

We have a good 7 room modern home close in for \$2200.00. Better look at it.

If you want anything in the farm line, see us. We have it.

Snow & Dayton
"We Sell Land"

Phone 1072. 117 East Court Street.

Real Estate Farm Loans Insurance

OUTBURSTS OF EVERETT TRUE



Pendleton Market News

The following prices are the prices being paid to producers by Pendleton business houses. Wherever retail prices are given the fact will be specified.

WHEN YOU WAKE UP DRINK GLASS OF HOT WATER

Wash poisons and toxins from system before putting food into stomach.

Wash yourself on the inside before breakfast like you do on the outside. This is vastly more important because the skin pores do not absorb impurities into the blood, causing illness. For every ounce of food taken into the stomach, nearly an ounce of waste material must be carried out of the body. If this waste is not eliminated day by day it quickly ferments and generates poisons, gases and toxins which are absorbed or sucked into the blood stream, through the lymph ducts which should such nourishment.

A splendid health measure is to drink, before breakfast each day, a glass of hot water with a teaspoonful of limestone phosphate in it, which is a harmless way to wash these poisons from the stomach, liver, kidneys and bowels; thus cleansing, sweetening and freshening the alimentary canal before eating more food.

A quarter pound of limestone phosphate costs but very little at the drug store, but is sufficient to make anyone an enthusiast on inside bathing.

Stay on the Job While it Rains
TOWER'S FISH BRAND REFLEX SLICKER
Is the best wet weather protection ever made

Look for the REFLEX EDGE

A. J. TOWER CO. Established 1836 Boston Mass.

Eggs and Poultry.
Eggs, 70c.
Hens, 18 to 20c.
Spring chickens, 20c a pound.
Country Ham, Etc.
Ham, best quality, 28c.
Bacon best quality, 40c.
Butter Fat and Butter
Butter fat, 68c f. o. b. Pendleton.
Butter, \$1.15 a roll.
Potatoes.
New potatoes, 2c a pound.

Hogs and Sheep
Steady; Cattle Quiet.
Only eight loads of livestock were received at North Portland for Thursday's trade and trade conditions were little changed with hogs steady to strong, cattle quiet, and sheep and lambs generally steady.

General cattle range:
Best steers, 9.00@10.50
Good to choice steers, 8.00@9.50
Medium to good steers, 7.00@8.00
Fair to good steers, 6.50@7.50
Cows, to fair str., 5.50@6.50
Choice cows & hfs., 7.75@8.50
Good to choice do., 6.50@7.50
Medium to good, 5.50@6.50
Fair to medium, 4.75@5.75
Canners, 3.00@4.00
Bulls, 5.00@6.50
Best light calves, 14.00@16.00
Heavy calves, 8.00@13.00
Stockers and feeders, 7.50@9.25

With only about two loads reported in overnight, market for hogs reflected a steady to strong tone. During the morning no change in quotations was shown, killers being averse to paying anything above \$14 for tops.
General hog market range:
Prime mixed, \$13.50@14.00
Medium mixed, 12.00@13.50
Smooth, heavy, 12.00@12.50
Rough heavies, 11.00@11.50
Pigs, 12.00@13.00

Steadiness was generally characteristic of the sheep and lamb trade. Only a small run was reported.
Stockers and feeders, 8.00@9.00
Yearlings, 8.00@9.00
Wethers, 7.50@8.50
Valley lambs, 10.90@11.00

Barley Prices Hold.
Corn and Oats Up.
While barley prices are holding steady for the past two days, oats and corn show advances. Oats are up 50 cents all around, while one grade of corn went up 50 cents and the other \$1. Mill feed is up 25 cents. The prices today are as follows: No. 2 barley, \$62, standard feed and No. 2 blue barley \$65. Oats are at \$51.50, \$52.50 and \$53. Corn is at \$59.50, and \$61. Mill feed is \$27.75.

FRUIT JARS OF LIQUOR ARE DROPPED ON STREET
THE DALLES, Ore., Oct. 31.—One thing after another happened last night to George Clemens of Chenoweth

HUNTING TIME

FOR DUCKS AND GEESE IS NOW.
I Can Give You a Good Price on GUNS.
Before you buy come in and see me.

WESTERN SHELLS

\$1.25.

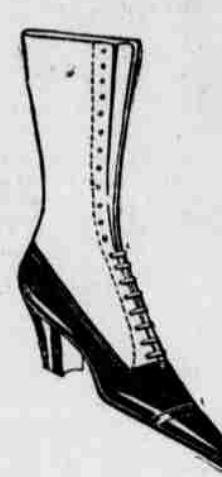
The shell that gets them.

SOL BAUM

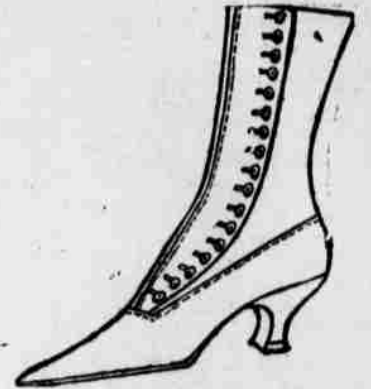
Sporting Goods Store. Hotel Pendleton Bldg.

J. C. Penney Co., A Nationwide Institution

MARVELOUS SHOE VALUES



In Women's SHOES



Including Brown Calf, Brown Kid, Grey Kid, Black Kid and Patent Leather, at astoundingly low prices. Take advantage now of the savings offered in these four lots.

LOT 1

Includes patent and kid leathers, button or lace, in high or low heels; sizes 3 to 7.

\$1.98

LOT 2

Includes black kid and patent leather, lace or button, in high or medium heel; size 3 to 7.

\$2.49

LOT 3

Includes Black Kid and Patent Leather, button or lace patterns, in high or medium heel; sizes 3 1/2 to 7 1/2.

\$2.98

LOT 4

Includes Black Kid, Brown Kid, Brown Calf, and Grey Kid leathers, all lace models, in high or military heel. Sizes 3 1/2 to 8.

\$3.50, \$4.50 and \$4.98

School Shoes

for the children in serviceable leathers, either button or lace patterns.

Sizes 5 1/2 to 8

\$1.98

Sizes 8 1/2 to 11

\$2.49

Sizes 11 1/2 to 2

\$2.89

THESE SHOES ARE CONVENIENTLY DISPLAYED ON COUNTERS FOR YOUR SELECTION.

DR. SCHOLL'S FOOT COMFORT SERVICE FREE.

J. C. Penney Co.
Incorporated
197 BUSY STORES
OPPOSITE HOTEL PENDLETON

J. C. Penney Co., A Nationwide Institution

J. C. Penney Co., A Nationwide Institution

J. C. Penney Co., A Nationwide Institution

J. C. Penney Co., A Nationwide Institution

J. C. Penney Co., A Nationwide Institution

J. C. Penney Co., A Nationwide Institution

J. C. Penney Co., A Nationwide Institution

A BARGAIN FOR YOU

Hudson Speedster
1918 Model

In good condition. Can be seen at

Oregon Motor Garage
BUICK HUDSON CADILLAC
Distributors

COLORADO GUARDSMEN OUT FOR STRIKE DUTY

DENVER, Oct. 31.—Colorado guardsmen are mobilizing on the orders of Governor Shoup for duty in the coal strike. The governor also asked a conference of state officers of the American Legion to arrange for the aid of war veterans in preserving order.
Shoup announced his determination to "strongly repress violence and disorder" and to protect the "constitutional right of every man to work when where and for whom he pleases."
The state troops, numbering 1000 will be used principally to protect miners who desire to continue work.