

# Country Lard

FRESH, CLEAN AND PURE, LB. . . . 35c

- EXTRA FINE COUNTRY BACON, POUND . . . . . 50c
- COMB HONEY, EACH . . . . . 30c
- BING CHERRIES, POUND . . . . . 14c
- ROYAL ANNE CHERRIES, POUND . . . . . 14c
- WHITE SALMON BERRIES, crate, \$3.50
- WATER MELONS, POUND . . . . . 6c
- C. & K. MILK, CAN . . . . . 15c
- MINCED CLAMS, CAN . . . . . 10c

COMPLETE LINE OF LUNCH GOODS AND QUALITY SUMMER DRINKS.

## GRAY BROS. GROCERY CO.

"QUALITY"

Two Phones 28 823 Main St.

## The Woman and the Bank

The successful housekeeper of today is a woman with the ability to manage household affairs with the means at hand and a surplus over to make payments on a bond perhaps, and have a Savings Account of her own.

She finds it most convenient to pay the bills by bank check, and by that system keeps perfect record of all expenses.

This bank welcomes both Checking and Savings Accounts, and we have a room specially equipped for the convenience of women.

## THE AMERICAN NATIONAL BANK

PENDLETON, OREGON

"STRONGEST BANK IN EASTERN OREGON"

# LOOK

## Watch this Space

for a surprise to the people of Pendleton and community.

WATCH IT

from day to day so that you wont miss it.

## FRENTZEL MOTOR SALES CO.

Telephone 16 722 Cottonwood St.

Distributors of Umatilla County for White Trucks and Lexington Minute Man Six.

# Cattle are Up

Take advantage of this bargain in a cattle ranch, fully stocked and equipped.

172 acres adjoining the Reservation where all year grazing can be had at small cost. There is a small house, good barn, 50 acres in the bottom which is in grain and some alfalfa. The place raises sufficient hay to feed all the stock.

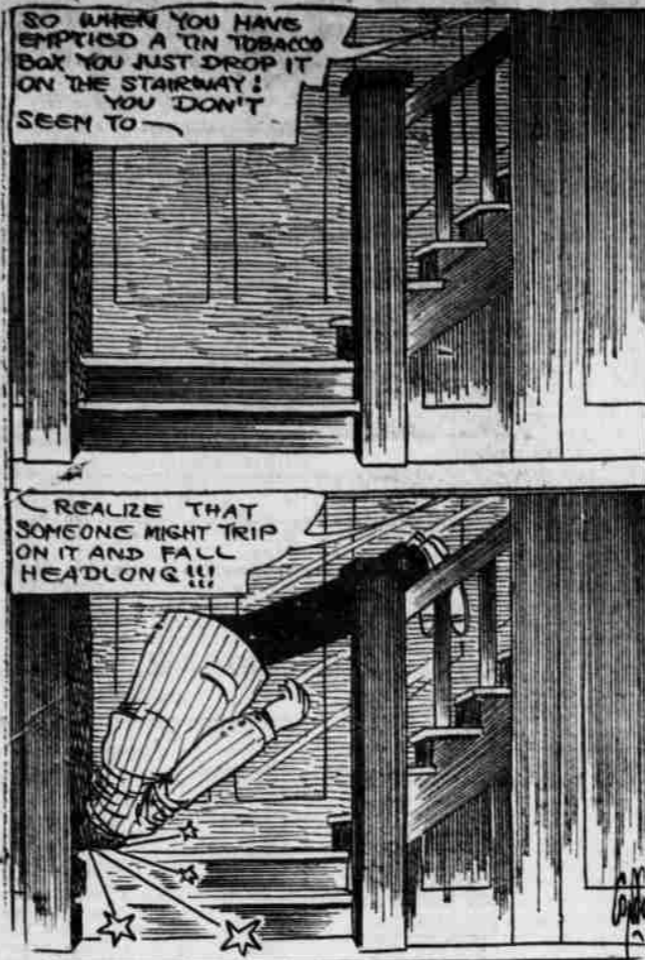
With this ranch goes all cattle and horses, saddles, machinery and equipment to run the ranch. There are 120 head of short horns and whiteface cattle, 20 of them being three year old steers, balance two, yearlings and cows and calves.

10 head of horses, harness, saddles. Price for everything, if taken quick \$12,500.

## Snow & Dayton "We Sell Land"

117 East Court Phone 25 REAL ESTATE FARM LOANS INSURANCE

## OUTBURSTS OF EVERETT TRUE



## Pendleton Market News

The following prices are the prices being paid to producers by Pendleton business houses. Whenever retail prices are given the fact will be specifically mentioned.

- Eggs and Poultry. Eggs, 35c to 40c. Hens, 22c to 25c a pound.
- Butter. Butter fat, 57c a pound f. o. b. Pendleton.
- Potatoes. Potatoes, \$2 for 100 pounds.
- Country Ham, Etc. Ham, best quality, 25c. Bacon, best quality, 40c. Lard, 25c.

### Little Change in Prices in Local Markets.

There is little change in the local markets today. Fruit, which Saturday showed such a decided decline, is selling at the same prices. Butter fat still pays 57c to the producer.

### Country Ham Brings 35c a Pound.

In the prices quoted for hams and bacon, the price of 35c for ham and 40c for bacon is paid to the producer for the country product and not for the product shipped here from outside the county.

### Raise in Coffee Due to Speculators

The raise in coffee is due to speculators, according to the opinion of Arthur H. Devers, of Closett and Devers, who also believes that the greatest possible maximum the coffee is liable to attain is 75 cents. He says: "It is understood that millions of coffee trees have been destroyed by frost. The public will remember that oranges once went up to \$1 per dozen on the strength of reports that the frost had killed the fruit. The public stopped buying oranges and the price dropped to 60 cents. The coffee bulls in Brazil and the United States are working the same game on coffee and it is strictly possible the public will take such action as will tend to cause cessation of the bull movement."

### Coffee Goes Up 2c at Portland.

Leading coffee roasters advanced their quotations 2c a pound during the day to protect themselves against the high prices asked by some manipulating interests; the low priced firms getting more business than they were willing to accept.

### General Stock Prices Hold Up.

Stock prices at Portland Saturday were as follows:

General cattle range:	
Good to choice steers . . .	\$10.00@11.00
Fair to good steers . . .	9.00@9.50
Common to fair steers . . .	8.00@8.50
Common steers . . . . .	7.00@7.50
Fair to medium cows and heifers . . . . .	8.00@8.50
Good to choice cows and heifers . . . . .	9.00@9.50
Medium to fair cows and heifers . . . . .	6.00@7.00
Canners . . . . .	3.50@5.00
Bulls . . . . .	5.00@8.00
Calves . . . . .	9.00@12.25
General hog range:	
Prime mixed . . . . .	\$19.50@19.75
Medium mixed . . . . .	19.00@19.25
Tough and mixed . . . . .	17.25@17.50
Pigs . . . . .	17.25@17.75
Bulk . . . . .	18.50
Fair to choice lambs . . .	\$12.50@13.50
Cull lambs . . . . .	10.00@10.50
Yearlings . . . . .	6.00@8.75
Wethers . . . . .	6.50@8.00
Ewes . . . . .	6.50@7.50

### REALTY TRANSFERS

DEEDS. Velda Lavadore Friedlander to L. L. Rogers \$2000. N 1-2 of the NW 1-4 of the SW 1-4 of section 14, township 2 N. R. 34. A. E. Bounton to Geo. L. Dunnington \$2000. SE 1-4 of the NE 1-4 of the

SE 1-4 of section 27, township 4 N. R. 29.

George Hodge to W. J. Hoffman, \$10. SE 1-4 of the SW 1-4 of section 13, and the NE 1-4 of the NW 1-4 of section 24, E 1-2 of the SE 1-4 and the W 1-2 of the SE 1-4 of section 13, NE 1-4 of the NW 1-4 and the NW 1-4 of the NE 1-3; SW 1-1; SW 1-4 of the NE 1-4 and the SE 1-4 of the NW 1-4 of section 23; S 1-2 of the NW 1-4 of section 24, township 4, N. R. 28.

Chas. H. Crandall to Sidney V. Anderson, \$25. NE 1-4 of the NW 1-4 of the SE 1-4 of section 15, township 4 north, range 28.

T. S. Givers to Frank Derrick, \$3,000. S 1-2 of the SE 1-4 of the SE 1-4 of the SE 1-4 of section 27, township 6, N. R. 25.

Geo. Morrill to Dr. M. L. Batezore, \$1. 7 acres in the NE 1-4 of the NW 1-4 of section 35, Tp. 6.

Violet R. Hughes to J. O. Kenyon, \$3200. Descriptive tract in block 6, McCoy's Add, Milton.

Tuna-Lum Lumber Co. to W. C. Wade, \$10. Descriptive tract in block 1, Ireland's Addition, Milton.

## MONEY WASTED BY BRITISH WAR LORDS

LONDON. (By Mail.)—Taxpayers here are gnashing their teeth at the way their good money has been wasted.

The comptroller and auditor general of government expenditures has just written his report on the accounts of the Ministry of Munitions for the past year. His accounts show: That a factory which cost \$9,500,000 to erect produced only \$80,000 worth of material.

Another factory which was built at a cost of \$25,000 was closed and used as a store eight months after it was built.

One of the staff was engaged at a salary of \$10,000 a year and got \$8,000 for four months part-time service.

An escape of poison gas cost the taxpayer \$1,250,000 owing to the fact that one set of wisecracks started to make the gas before another set has approved of it. The difference of

### FOR LITTLE MISS DEMURE



The more artistic of admiring grown-ups will envy the artful simplicity of this delicious little party frock for the ten-year-old girl. The frock is made in reding-cote style with a deep, hemstitched hem, a rounded, cord-finished neckline, and a skilfully laced velvet bow of French blue. The frock itself is of rose pink georgette crepe.

J. C. Penney Co., A Nationwide Institution.

WE MAKE IT EASY FOR YOU TO DO YOUR 4TH OF JULY SHOPPING.

We are proud of the fact that we are keeping prices down in Pendleton. We endeavor at all times to sell at the very smallest margin of profit. The wonderful growth and success of the J. C. Penney Stores is proof enough that people all over the United States are taking advantage of the splendid values we are offering. THIS STORE'S "GOOD NAME" depends primarily upon the value delivered in merchandise it sells. We take pride in presenting to you the largest assortment of latest styles and best values in Ladies' Georgette Waists in this city \$2.98 to \$9.90. . . . We specialize on a wonderful value in Ladies' Waists at \$4.98.

CAMISOLES 69c to \$2.98

Don't fail to see the wonderful values we are offering at . . . \$1.23

QUALITY IS ECONOMY and it is to be had in Madam Pfeil front lace Corsets. Every corset guaranteed. Come in pink and white at prices unequalled elsewhere. Priced at . . . . . \$1.98 to \$5.90

J. C. Penney Co. Incorporated 197 BUSY STORES

J. C. Penney Co., A Nationwide Institution.

Returned soldiers who doff their becoming uniforms for unbecoming "civies" and find that the "demand" for the latter is sending prices sky high have reason to feel a bit disturbed.

In some instances contractors were paid compensation by way of apology for the fact that the Ministry, after placing the contract, changed its mind.

TACOMA WEDS IN PARIS

TACOMA, June 23.—Battalion Sergeant Major George P. Johnson is on his way home to Tacoma with his bride, a French girl, whom he married in Paris. Before he took the step he wrote and asked the permission of his parents, Mr. and Mrs. W. S. Johnson.

Johnson met his bride, who was Yvonne Cuisinier, when he was stationed at Mont Richard, France. Later she went to Paris to work as a stenographer and he was stationed there for a time. They met again and were married. Since their wedding they have been living at Neufchateau Vosges, where Johnson was in the office of the provost marshal.

"America first" is no second rate slogan.

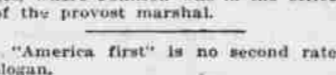
Dr. Lynn K. Blakeslee

Chronic and Nervous Diseases and Diseases of Women. X-Ray Electro Therapeutics. Temple Bldg., Room 12, Phone 414

DALE ROTHWELL Optometrist and Optician

THE FISHING IS GOOD

GET THE RIGHT TACKLE AND THE GETTING WILL ALSO BE GOOD



## SOL BAUM

FOR THE RIGHT FLY HOOKS. That is what you want now. Look for the Fish. Hotel Pendleton Bldg.

Con Dung Low Louies Place

Fine home-made FISH NOODLES

Chili Con Carne, Spanish style.

Chop Suey, Chinese style.

All kinds of Soup.

Short Order Meals.

Good Steaks.

Lunches, Coffee, etc.

China Tea for Sale

UNDER STATE HOTEL

Cor. Webb and Cottonwood Sts. Phone 487. Pendleton, Ora.

Bring Your Car to Us

We can furnish promptly any size

Wind Shield Glass

We have an experienced man who will set the glass while you wait

B. L. Burroughs, Inc.

Corner Webb and College Sts.

Acason TRUCKS

We Are Distributors for Umatilla County

See them in our show room. A complete line. Immediate deliveries. Service behind every sale. Let us demonstrate.

Oregon Motor Garage 119, 121 West Court St.

Borg & Beck Clutch Eisenman H. T. Magneto

Acason TRUCKS

We Are Distributors for Umatilla County

See them in our show room. A complete line. Immediate deliveries. Service behind every sale. Let us demonstrate.

Oregon Motor Garage 119, 121 West Court St.

Borg & Beck Clutch Eisenman H. T. Magneto