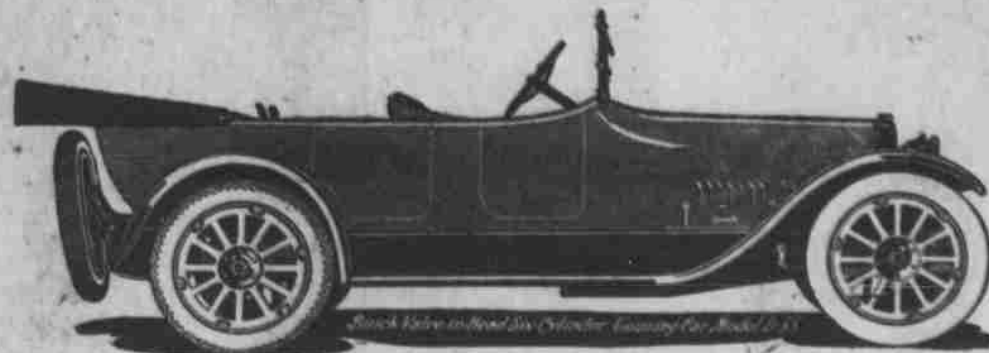


# CARS, TRUCKS, TRACTORS AND SERVICE THAT DELIVER THE GOODS

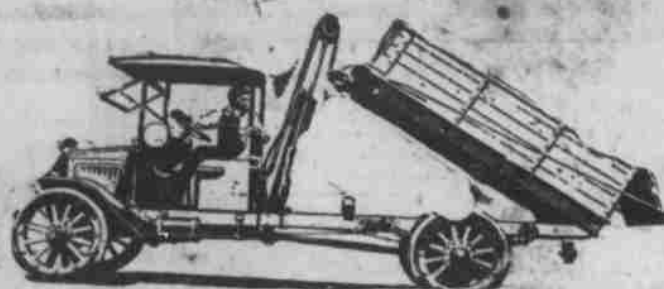


**HUDSON**



**BUICK**

"Standard of the World"  
**CADILLAC**  
EIGHT



**DENBY**  
MOTOR TRUCKS

**F. W. D.**  
four wheel drive  
**TRUCKS**

Information and Service for Tourists

Dependable Accessories for Shop Service

Greatest Stock of Parts in Eastern Oregon carried here  
Agency and Service Station for **GOODYEAR TIRES**

# BATES STEEL MULE

## A REAL TRACTOR

**ENCLOSED WORKING PARTS**

The unit construction of the Bates Steel Mule not only affords protection against dust but also assures permanent rigid alignment of transmission parts with the motor, regardless of any severe twistings. Working parts run in an oil bath.

**POWERFUL ON SOFT GROUND**

The twin crawlers of the Bates Steel Mule form a firm runway on soft ground. Twenty-four cleats prevent slipping, and the ground pressure is less than 3 1-2 pounds per square inch. So soft ground is no different from hard, as far as pull is concerned. And the non-slip feature saves fuel.



**BOTH DRIVES LEVEL WHEN PLOWING**

The twin crawlers run on the unplowed ground and one front wheel follows the furrow for self-steering. So the Bates Steel Mule runs upright without the side thrust on bearings that comes where a tractor leans over because of a driver running in the furrow.

**NO SIDE DRAFT**

The Bates Steel Mule is built low, with a low center of gravity. And still it has nearly 14 inches' ground clearance. The draft comes squarely in the center—cannot come from the side. So on hillsides there's no tendency to work down like in ordinary tractors.

**SPECIFICATIONS**

Class Rating .....	12-20	Motor—Bore of Cylinders—Bore .....	4 in.
Drawbar Horse Power, over .....	18	Motor—Bore of Cylinder—Stroke .....	6 in.
Power as Stationary Plant, over .....	24	Total Weight of Tractor .....	4500 lbs.
Length Over-all .....	9 ft. 9 in.	Weight on each Front Wheel .....	210 lbs.
Width Over-all .....	82 1-2 in.	Weight on Crawlers .....	3320 lbs.
Width of Base to make Complete Turn ..	14 ft.	Width of Crawlers .....	15 in.
Speed High Gear—Miles per Hour .....	5.2	Fuel used by Motor .....	Kerosene or Distillate
Speed Low Gear—Miles per Hour .....	2.4	Capacity of Kerosene Tank .....	10 gal.
Motor—Number of Cylinders .....	4	Capacity of Gasoline Tank .....	2.5 gal.

Not too large nor too small—does the work at a moderate cost. Service, Parts and Repairs behind every sale.

**SPECIAL FEATURES**

The radiator is of cellular copper tube type with spiral air passages. Very efficient and durable. Water circulated with centrifugal pump.

The motor is designed especially for tractor work on low grade fuels, and is a medium speed, heavy duty type, with extra large bearings and crankshaft. Circulating oil system, four cylinder, overhead valves, centrifugal ball governor attachment to the throttle, in addition to independent hand control throttle.

Air in carburetor filtered through Bennett Air Cleaner. Ignition from Kleanman High Tension Magneto.

All transmission shafts and main drive shafts run on Timken roller bearings. The gears are cut alloy steel, hardened and ground. Shafts: alloy steel. All gears, both transmission and ball gears run in oil inside dust-proof cases.

The tractor is spring mounted and extraordinarily flexible on rough ground. A full set of tools is supplied with each machine.

# OREGON MOTOR GARAGE

117, 119, 121, 123 East Court St.

(Incorporated)

Telephone 468