

If you object to living in a town that has good community spirit, splendid schools, good mountain water, well paved streets and other advantages of a wide awake little country city do not come to Pendleton. We've got those things and are going to have more.

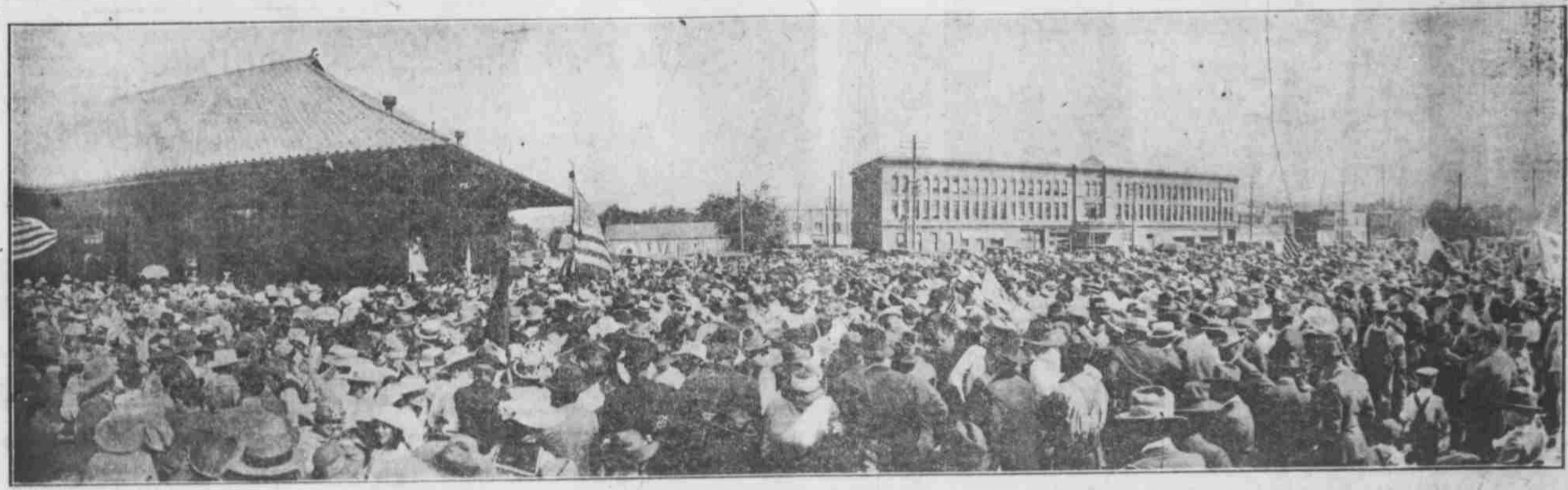
PENDLETON
The largest town of its size in the world.



PENDLETON
Second city in state in financial strength.

FOUND-UP SOUVENIR EDITION
PENDLETON, OREGON, SATURDAY, SEPTEMBER 21, 1918

SCENES IN THE "BIGGEST TOWN OF ITS SIZE IN THE WORLD"



The above picture shows a street scene in Pendleton, looking south on Main street from Water. The top picture shows a throng at the depot giving a draft contingent a patriotic farewell. Over 1000 men from Pendleton and Umatilla county have entered the army and navy. In every war drive since the beginning of hostilities the city and county have gone over the top, often leading the state. The city and county took a total of \$3,639,550 in first, second and third Liberty bonds. The county's quota was \$2,840,500, the subscriptions being 128 per cent; the county long ago concluded its war saving stamp drive, taking a total of \$450,000 in stamps. The Red Cross, Y. M. C. A., Knights of Columbus and Salvation Army quotas have always been heavily oversubscribed.

Pendleton has a population of 7500 people, there are 6500 depositors in the two local banks, the bank deposits at times running above the seven million mark. The city has 1549 telephones in use, five hotels, eight churches, two parks, 10 miles of gas mains, 18 miles of sewer mains, a mountain gravity water supply, producing 3,000,000 gallons of water daily for the city, 10 miles of paved streets, an up-to-date paid fire department, a modern high school with all vocational courses, four grade schools and St. Joseph's Academy (Catholic). The city is the location for the Eastern Oregon State Hospital, for the Eastern Oregon sessions of the United States district court and the Oregon supreme court. It is headquarters for the Umatilla National Forest and the Northwest Biological survey, federal. The famous Pendleton Woolen Mill, making the Pendleton Indian Robes, is located here. It is now engaged in war work. The city has an altitude of 1074 feet, an annual rainfall of 15 inches. The climate is invigorating and healthful, days of sunshine predominating throughout the year. Summer nights are always cool and refreshing. The city is on the main line of the Union Pacific. It is the terminus of the Spokane branch of the O-W. R. & N., of the Pilot Rock branch, and of the Pasco-Pendleton branch of the Northern Pacific. Twenty two passenger trains enter the city daily. The city is the capital of the greatest grain producing county in Oregon and the bank deposits are the largest per capita in the United States. It is the custom for eastern Oregon farmers and stockmen to make Pendleton their home town. Hundreds of such families live in the city, obtaining the advantages of the schools and other facilities.