

# Have Your Tires Re-treaded

OUR NEW DRI-KURE RETREADER HAS REVOLUTIONIZED THE TIRE REPAIRING INDUSTRY.

The "Dri-Kure-Retreader" was invented by a practical tire man, who, knowing that the dry cure process was the one best method for curing tires, set about to eliminate the mold marks, spongy and semi-cured ends, which the old method invariably left on the tire, and so constructed a mold that was at once a pronounced success. This was made possible to a greater degree by the addition of non-heat-conducting blocks which fastened on the end of the mold, and immediately it was proclaimed by the best tire experts in the country to be the salvation of the tire repair industry.

Not satisfied with being able to cure plain and tread bands in these molds, the pattern was changed; the quarter circle or middle portion of the mold was raised to make the curing of sections possible. An aluminum insert was made to fit into the mold for the making of rib treads and this plant was then, truly, a "Three Way Mold."

These plants are now used extensively by the largest shops in the country, by men who had in many cases installed large "Kettle Plants" but who at once saw the superiority of the new "Dri-Kure-Retreader."

We advertise and offer War Savings Stamps for sale with every purchase.

## Simpson Tire Service Company

L. A. MENTON, Mgr.

223 E. Court St.  
Night Phone 268-J

Day Phone 651

### Amusements

What the press agents say about Pendleton's present and coming attractions.

#### ALL ANIMALS ARE GOOD PUPILS IN THE SCHOOL

"To market, to market, To drive a fat pig, Home again, home again, Jig-i-ty jig."

So exclaims old Mother Goose as she drives her porcine team to the palace of comedies in the Al. G. Barnes' wild animal circus coming to Pendleton on May 29.

Old Mother Goose is hovering over pork the same as all the rest of us so instead of putting his porcine carcass in the boiling pot she used to take him to market where more economic purchases may be made. Instead of being shaved about in dirty pens and made the butt of all sorts of abuses Mr. Pig and his family, are shown due consideration. In the play grounds of the Barnes' circus, chutes are provided for the pig family and to give daily patrons the Barnes' circus can see the comical antics these cunning creatures display as they go through their side splitting acts.

Whoever thought the goose was really a comedian? Well, he is Al G. Barnes this season presents a whole flock in military comedy. The captain squawking out his commands in a manner that only the goose family can understand.

Monkeys, dogs, horses, kangaroos, bears, and elephants assisted by a corps of clowns make up the laughing features of the circus. The program has been made over from beginning to end this season, many unusual and absolutely new features introduced. Much of the military prevails throughout the entire performance. The military horses in greater number and added features an inspiration to all. Over 500 people are needed to put the big Barnes circus over this season, due to the increased number of entertaining features and enlargement of the circus in general.

From the big entire feature "The Conquest of Nyanza" to the closing spectacular "The Royal Hunt" the Barnes program is chock full of punch and ginger being instructive, educational and entertaining to every individual.

vidual patron. The humorous, the grave, the military, the spectacular, the picturesque, the thrilling, the serene, the sublime and the ridiculous each come in for their share. The program being so arranged that a jar is felt but a gradual letting down of each emotion to a perfect shading. The big parade at 10:30. Doors open at 1 and 7 p. m.

#### German Suspect Threw Papers From Southern Pacific Train

PORTLAND, May 24.—Julius Pankow and Gertrude Ruzge, German alien enemies, are under arrest here suspected of being spies in the employ of the government of the Kaiser. They were taken into custody Wednesday night as they alighted from the San Francisco train, by Deputy Sheriff Christofferson and Beckman. Sheriff Hurlburt had been notified of their coming by Sheriff Quine of Douglas county, who telephoned to Hurlburt from Roseburg to be on the lookout for them and advising him that Pankow threw a bundle of papers out of a car window about four miles south of Roseburg, for which search would be made.

Sheriff Hurlburt received another telephone message from Sheriff Quine late yesterday afternoon to the effect that the missing papers had been found near the railroad track and would be mailed to Portland. Sheriff Quine gave no indication of what the papers consisted, except to say that they had reference either to coast defense or coast artillery.

A Mr. Kratzer, a passenger who got on the train at Medford, heard the pair talking in German. He remonstrated, saying that in these critical times if anyone had anything to say it should be said in English. The fact that they were being watched aroused Pankow's apprehensions and presently he retired to the lavatory. Kratzer put his head out of the window on the same side of the car and saw Pankow throw the bundle of papers off the train.

Kratzer informed the train conductor, who wired a report of this action to the sheriff at Roseburg who, when the train arrived, deputized Grather to watch the Germans and turn them over to Portland officers when the train arrived.

Searched at the county jail Pankow was found to have \$40,000 in American Express company's checks and other securities. He is 60 years old. The woman is about 53. She denied traveling with Pankow and said she did not know him. They were casual acquaintances, meeting on the train, she said.

Pankow explained this throwing off the papers by saying they were pictures obtained in his travels through Switzerland. The man and woman are being held at the county jail awaiting investigation by the federal authorities, who were notified and who have taken possession of the papers and effects of the pair taken from their suitcases.

Garden Patriot is 79. WASHINGTON, May 22.—"I am a veteran of the civil war and I want your free garden peimer so I can plant a few rounds of sharp shooter peas to shoot at that butcher's carcass." That

## Don't Overlook the Care of Your Tires

When they begin to show signs of wear or small holes appear a blow-out will soon be inevitable. Guard against this discomfort and expensive ordeal by having your tires repaired before this happens.

FIRST CLASS WORK GUARANTEED

We are Wholesale and Retail Agents for  
**DIAMOND TIRES**  
GOODRICH SILVERTOWN CORDS,  
KELLY-SPRINGFIELD AND  
MOHAWK TIRES

# 20% OFF ON ALL FIRESTONE TIRES

All Guaranteed

TERMS CASH

ACCESSORIES

Air, Gas and Water at Curb

### VULCANIZING

by mechanics of experience

## Pendleton Rubber & Supply Co.

WHOLESALE AND RETAIL

W. N. Matlock, President. Wm. Dunn, Manager.  
205 East Court St. Telephone 133

We advertise and offer War Savings Stamps for sale with every purchase.

WE CARRY A COMPLETE LINE OF

# Firestone

TIRES

in all the various sizes in both Fabric and Cords.

## C. & F. MOTOR CO., Inc.

722 Cottonwood Street

Phone 46

A Thrift Stamp collection is interesting to look over on the proverbial "rainy day".

### The PERUNA Family

has three members you should know if you desire to enjoy life.

1. The popular liquid form of Peruna—the reliable tonic of the American household, with a long history of success in treating all catarrhal difficulties.

2. The tablet form, which is made after the same formula and is more convenient for many.

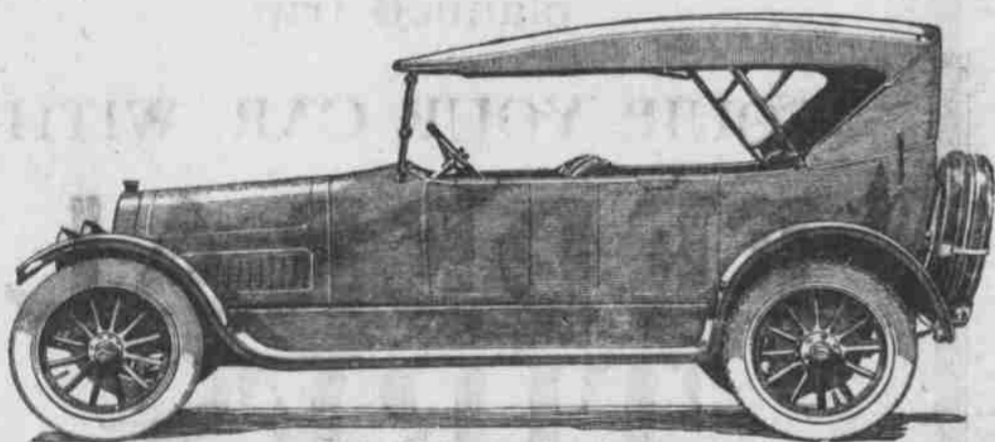
3. Mannitol, the ideal laxative, by the regular use of which constipation may be overcome and natural action restored. Mannitol has no habit forming effect, but is an aid to nature.

Your druggist has all three. So many thousands have received benefit from the use of one or both these remedies that they are a recognized part of the equipment of every careful household.

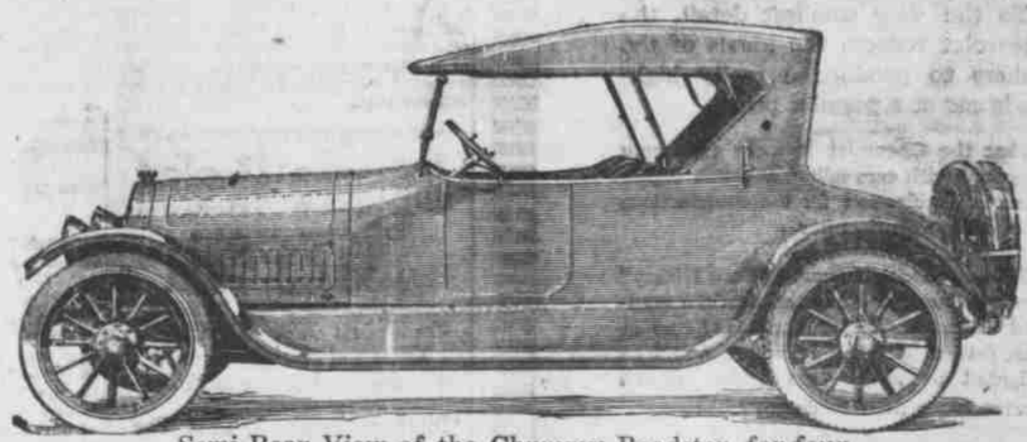


THE PERUNA COMPANY Columbus, Ohio

# The Apperson Restful "Eight"



The Apperson Light Eight showing the One-Man Top in place.



Semi-Rear View of the Chummy Roadster for four.

The slender and aristocratic beauty of this car lies in its extremely long wheelbase—a full 130 inches. Yet it weighs nearly three hundred pounds less than any other car of anywhere near its horsepower. Its weight, fully equipped ready for the road, with gasoline, oil and water is approximately 3300 pounds. Unusual comfort is assured by deep upholstery filled with real hair, and a design which permits relaxation of the occupants. You rest as you ride in an Apperson. Its ample roominess is carried to the last degree by the way in which the auxiliary seats fold away into special compartments completely out of sight. The four-passenger "Chummy" roadster type originated in

the Apperson factory. This wonderfully popular type of body is protected by a patent issued by the United States Government to Elmer Apperson. In the new roadster body for nineteen-eighteen more room has been provided by replacing the stationary side pockets with bellows pockets of leather which lie flat against the side of the car when not in use.

This model is particularly desirable alike to the business man and the woman of society because of its convenience, comfort, style and compactness. In exterior appearance it does not differ from the ordinary roadster, yet ample room is provided for four passengers.

CHASSIS—Eight-cylinder models.  
BODY TYPE—A seven-passenger touring and four-passenger "Chummy" roadster. An enclosed touring Sedan body can be had on the eight-cylinder chassis. Prices supplied upon request.  
WHEELBASE—120 inches. Very short turning radius.  
MOTOR—The Light Eight is of the long stroke, high speed type. Light weight reciprocating parts give quickness of "pickup," freedom from vibration, silence and long life. The Eight, bore 2 1/4, stroke 5, and is of the L-head type.  
LUBRICATION—Motor lubrication is by the famous hollow crankshaft force feed system.  
CLUTCH—Operation is smooth and easy. Disc, dry plate type; steel plates are used, which are faced with wire mesh asbestos.  
BODY—Touring, is the divided front seat double cowl type. "Chummy" roadster body has an aisle-way between the two front seats. Ample leg and knee room in both types.  
UPHOLSTERY—Springs that fit snugly to the backs of the passengers are used in the upholstery. Nothing but curled hair is employed. Leather is genuine hand-buffed. The top is one-man type with dust curtains, detachable from inside of car.

FRAME—Ample depth and strength. Cold pressed, high carbon steel, heat-treated.  
AXLES—The front is an I-section drop forging. The rear axle is of the demountable floating type.  
SPRINGS—Resilient, extra long and extremely durable. Front springs semi-elliptical, slung over axle. Rear springs three-quarter elliptical and under-slung.  
WHEELS AND TIRES—Wheels, selected hickory, artillery type, fitted with demountable rims, 34x4 inches. One extra rim is furnished. Four tires, combination set; 28x3 1/2 on Eight (if cord tires are furnished at extra charge, the size is 34x4).  
EQUIPMENT—Includes ventilating, rain-vision, rain-proof windshield; revolving dial gear-driven speedometer; ammeter; clock; mechanical tire pump; electric horn; round robe strap; foot rail; tools and jack. Wire wheels, set of five \$125 net extra.  
COLORS—Apperson Green, Royal Blue and Imperial Gray.  
PRICES—These will be furnished upon request. Any war tax that may be levied on manufacturer or dealer will be added to the standard list prices. All prices include full equipment and are f. o. b. Kokomo, Indiana. Prices in all cases are subject to change without notice.

DISTRIBUTORS FOR UMATILLA CO.

# THE INDEPENDENT GARAGE

COURT and THOMPSON ST.

C. O. CRAWFORD, Mgr.

PHONE 633