



Don't Hesitate to Ask Questions

Are you doing enough driving with lights off to keep your battery properly charged?

Are you replacing the evaporation, which is always going on, by a proper amount of distilled water?

Are you sure current isn't being lost daily by some defect in wiring or connections?

Does current flow freely?

If you'll stop the next time you see our service sign, we'll be glad to answer as many questions as you can find time to ask.

And don't forget to include an inquiry about the Still Better Willard with Threaded Rubber Insulation.

Electric Service Station

Cor. Main and Water Sts.

We advertise and offer War Savings Stamps for sale with every purchase.



Most Miles for Less Money

Can be no fuller realized than by keeping a close tab on your tires and have them repaired when they begin to show wear.

DON'T PUT IT OFF. DO IT NOW!

Our mechanics are especially skilled and absolutely guarantee that any work done here will be satisfactory and a downright saving in dollars to you.

Auto Supplies

Buy them now, get the full year's use and save the advance in price that is sure to come on many articles.

- BUMPERS
- JACKS
- SPARK PLUGS
- TOOL KITS
- SPOT LIGHTS
- WIRE
- CLOCKS
- SPEEDOMETERS
- LIGHT GLOBES
- WARNER LENSES
- SIGNAL HORNS
- OILS
- TUBE REPAIR KITS
- CHAINS
- CAR POLISH
- BRAKE LINING
- TOOLS
- Shock Absorbers

DIAMOND SQUEEGEE TIRES
GOODRICH SILVERTOWN CORD TIRES
KELLY-SPRINGFIELD TIRES
REPUBLIC TIRES
SERVICE STATION, OIL, GAS AND WATER AT CURB.

Pendleton Rubber & Supply Co.

WHOLESALE AND RETAIL
W. N. Matlock, President, Wm. Dunn, Manager.
225 East Court St. Telephone 125
We advertise and offer War Savings Stamps for sale with every purchase.

War Prices

have increased the value of your buildings and property. **HAVE YOU INCREASED YOUR INSURANCE** so as to cover your loss in case of fire? Come in and let us talk it over. All our time is devoted to the interest of our policy holders.

THE BENTLEY-GRAHAM INS. AGENCY
J. M. Bentley, Pres. John F. Montgomery, Vice-Pres.
11 S. Graham, Bldg.-Trans.
313 Main St. Phone 494

We advertise and offer War Savings Stamps for sale with every purchase.



Miss Margaret Putnam of Pendleton, will arrive in Salem tonight on a short business trip, returning Sunday morning. Miss Putnam's mother, Mrs. G. P. Putnam, will return with her daughter to Pendleton, where, to the regret of her many Salem friends, she plans to make her home. Accompanying the travelers to Portland will be Mrs. Putnam's son and wife, Mr. and Mrs. Ivan Putnam. The party will motor down—Salem Capital Journal.

The surgical dressings class under the direction of Mrs. Neighbour's Berkeley will meet Monday afternoon at the Federal building. Mrs. Berkeley will cordially welcome volunteers who are interested in assisting with the work which will begin at 2 o'clock.

Miss Helen G. Stewart, who will speak in the high school auditorium on Monday evening will be tendered a luncheon at the Duquesne at 1 o'clock on Monday. This luncheon is for women only. Miss Stewart is a Red Cross nurse, returning from the front and will be able to give much information in regard to conditions.—Walla Walla Union.

Miss Norma Alloway, Miss Edith Johnson and Mrs. Norma La Fontaine, accompanied by her little daughter, Janet, left on No. 17 today for Portland. They expect to remain a week.

Mr. and Mrs. H. S. Ryd plan to leave tomorrow for a several days' visit in Portland, which is occasioned by the event of their tenth wedding anniversary on Wednesday of next week.

The fortnightly twilight social hour of the Epworth League of the Methodist church is being anticipated by members and friends of the organization. It is scheduled for 6 o'clock tomorrow evening and the program will be devoted to Tennyson. It will include both readings and quartet and solo musical numbers.

Following an 8 o'clock business meeting of the Parish House Guild of the church of the Redeemer, Miss Helen Stewart, whose lecture at the Christian church last evening proved to be of exceptional interest, will give a short talk at the rectory this evening. It is scheduled for 8:30 o'clock and will precede an informal reception. All members and friends interested in the parish house guild are cordially invited.

Mrs. William Hisher has returned from a visit in Portland. She was accompanied home by her grandchildren, Virginia and William Guitch.

A number of Pendleton motor parties are planned preceding the dance at Potter Creek this evening. Several machines went from here to Astoria last night, and other parties enjoyed the dance at Hermiston on Thursday evening.

Mrs. J. A. McLaughlin of Echo, and her son, James McLaughlin, an officer in the aviation corps who is home from New York by a furlough, were Pendleton visitors yesterday.

Concerning a former Pendletonian, the Walla Walla Union says: Edward Milne, a graduate of Whitman college in 1912 and for several years professor of mathematics in Bowdoin college has been commissioned a captain in the artillery branch of service and will leave soon for France.

The Women's Council of National Defense will meet in the club room of the county library Monday evening at 7:30 o'clock.

Mrs. Jane Wallan of Adams was a Pendleton visitor yesterday.

W. F. Hagtle of Wallace, Idaho, is registered at the Golden Rule.

Perry Houser was here yesterday from his ranch near Pilot Rock.

Ethel Casey and Betty Baker of Heppner are registered at the Pendleton.

Ben F. Brown, prominent stockman of Gillson is making Pendleton a visit.

Julie J. W. Sabony arrived home this morning from a short visit in Portland.

W. H. Singer and B. A. Fisher, former residents of Umatilla county are visiting in the city.

FISHER HUSBY.

(Continued from Page 1.)

Being to Aberdeen and they will leave in a day or two to report to that club. McCredle has agreed to turn over all of his released men to Aberdeen and Fisher expects to let several others go the latter part of next week. He would not intimate the identity of the third outfielder in any way, but he did include an outfielder, a pitcher or two, a couple or more infielders and probably one or more catchers.

There are already two fixtures in the outfield, Cliff Lee and John L. Sullivan. This much anyone could guess and Manager Fisher is willing to admit. For the third outfielder, Fisher declares it is up to Ed McCredle and Dempsey to show which will remain. Both have showed a good deal of promise.

Gunner Peterson, Pendleton catcher who was signed early in the week, looks to have a steady job. Manager Fisher stated today that he expected to use Peterson as a regular catcher for the time being and to use him as a utility man because of his all-around ability and experience. Peterson and Johnson will have to fight it out for a berth behind the bat and if Fisher finds a seasoned backstop, he may turn both of them over to another club.

The competition for second base is keen now between Hollahe and Hanson, but it is going to become bitter with the arrival of Hager, the Los Angeles polychrome star who tried out with Vernon and who is said to be a sensational fielder. Hager was

THE NASH TRUCK

LINE in 1 and 2-Ton Capacities ARE HERE

The Nash one and two ton capacity, rear driven trucks are reliable and efficient in their respective fields.

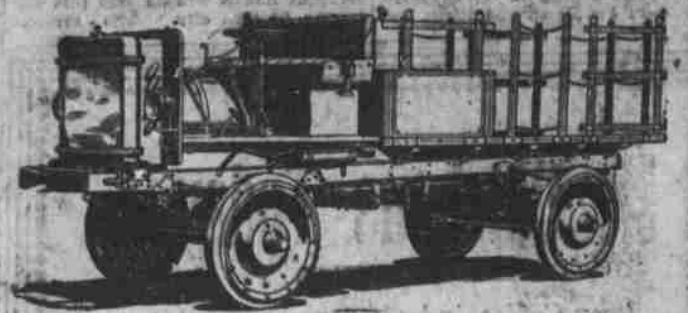
The Nash trucks have many mechanical features which have been tried out over a number of years in the hardest kind of truck service, and have proved their worth beyond question.

The powerful motors in the Nash rear driven trucks are most strongly built, with extra heavy crankshafts and bearings and unusually light yet strong connecting rods. They are built for satisfactory, enduring and economical truck service.

The predominant feature of these two trucks and that which buyers appreciate most' is the automatically locking differential

Both these rear driven trucks are equipped with internal gear driven rear axles. So each has a solid "dead" rear axle under its load. Nash engineers believe this type of axle much stronger and more satisfactory as a load carrier than the axle composed of several different working parts. Besides this advantage, the internal gear driven axle is economical of power and thus economical of fuel.

Another big advantage these trucks possess is the Hotchkiss type of drive which makes the use of torque arms and radius rods unnecessary, without in the least taking away from the strength of the trucks. The Hotchkiss drive, by applying the power through the rear springs, protects the working



parts of the truck from the first shock of power as the clutch is thrown in, and is a saver of tires and of fuel.

Nash rear driven trucks are equipped with electric lights and starters. They can work at night as well as by day. The driver of a Nash truck does not waste fuel. He shuts off the motor when he leaves the truck standing.

Also, both these trucks are equipped with an automatic governor which prevents abuse at the hands of careless or indifferent drivers, and which by automatically regulating the speed of the trucks and the flow of gasoline necessary to maintain that speed, is a big saver of fuel.

Prices on Model 2017 One-Ton Truck

Standard chassis (in lead)	\$9,495
Stake platform body (includes painting chassis)	Prices
Flareboard express body (includes painting chassis)	Prices
Fixed cap top over driver's seat (with curtains)	application
Folding bow top over driver's seat (with curtains)	application
Full canopy top for express body (with curtains)	application

All prices list T. & B. Kenosha

Prices on Model 3017 Two-Ton Truck

Standard chassis (in lead)	\$11,975
Stake platform body (includes painting chassis)	Prices
Fixed cap top over driver's seat (with curtains)	application
Folding bow top over driver's seat (with curtains)	application

All prices list T. & B. Kenosha

Pendleton Cadillac Auto Co.

Cottonwood and Water Sts.

Phone 530

at Bisbee, Arizona and has taken up his transportation.

Art Ritter, Portland recruit who has signed to sell at short, will contact for his place with Saps, released by Salt Lake to Fisher, and Fear-burn, his teammate for the same club, is going to make a bid for third. These two and Morton, Salt Lake pitcher, are expected to arrive tomorrow or Monday.

Garrick, a pitcher who tried out with Portland last year and who hails from Elch, is expected to join the

camp next week. William McKinley, a right handed pitcher picked up around Portland by McCredle, arrived in town this morning to give Fisher a chance to look him over. "The team is looking better every day," Fisher declares, "but I'm in the market for another seasoned pitcher and an old-head catcher."

TIKES 51 DAYS TO ARRIVE FOR SECOND DRAFT

ABERDEEN, April 9.—Not called in the first draft last year, Elmer Henschel, of the Surf Cannery company, gave his word before going to Alaska last October to establish a quarry there, to be in Aberdeen

ready to report to the draft board by April 1. He kept his word, arriving here last week, but to do it he munched 550 miles from Inner Skin Bay to seaward, dragging his sled by hand. He lost thirty five pounds on the trip, ran out of provisions, lived on porcupine and clam and spent fifty-one days on the trail.

Miss Rachel Johnson Tells How Cuticura Healed Her Skin

Of Blisters On Face Sore, Disfiguring and Painful

"Every time I was exposed to wind and sun, my face would come out in blisters. These would break open and were very sore and disfiguring. My face would burn and itch, and I could not sleep it was so painful."

"I tried many preparations but with no relief. Then I used a free sample of Cuticura Soap and Ointment. I found relief at once, so I bought more and used one box of Cuticura Ointment with the Cuticura Soap when I was perfectly healed. I use the Cuticura Soap and Ointment all the time, and would not be without them."

(Signed) Miss Rachel Johnson, DuBois, Idaho. Cuticura Soap and Ointment are not only most valuable for the treatment of pimples, dandruff and irritated scalp, but their great mission is to prevent such conditions. Cuticura Soap used exclusively for the toilet, and Cuticura Ointment, as needed, keep the skin and scalp clean, clear and healthy.

Sample Each Free by Mail. Address post-card: Cuticura, Dept. R, Boston, everywhere. Soap Co., International and Co.

H. A. (Lon) Williams

Candidate for COUNTY COMMISSIONER

in the Republican Primary, May 17.

Your vote and influence respectfully solicited

(Paid Ad.)

THE FRANKLIN CAR

Let Facts Appraise the Value of Your Next Motor Car



REAL facts concerning all makes of cars are not easy to get—except the fact of the purchase price. That's published broadcast.

But what about—

- Safety?
- Comfort?
- Reliability?
- Gasoline Mileage?
- Tire Mileage?
- Depreciation?
- Upkeep?

Here are seven problems—until you own the car. Then the answers come through experience.

But there is one car about which you, yourself, may judge these points before you buy—the Franklin.

Scientific Light Weight places the information in your hands.

Here is the test: Put the Franklin touring car on the scales. It weighs only 2280 pounds. And the Franklin Sedan—typical of Franklin enclosed cars—tips the scales at 2610 pounds.

Then weigh the other car.

When You Look For These Qualities

Franklin Scientific Light Weight insures strength and endurance; sure, safe, fast and easy travel over the road; economy all along the line.

All because the pound and drag and momentum of unnecessary weight is eliminated.

Let us prove this, after you get the facts about the heavy car, if you are lucky enough to unearth them.

Thousands of experienced owners have found in the Franklin the quality they want in a car.

We advertise and offer War Savings Stamps for sale with every purchase.

PENDELTON AUTO COMPANY