

# Over the Mountains

## TILLAMOOK Beach Resorts

Over the beautiful Coast Mountains where towering trees and roaring mountain streams invite you to leave the train.

### SEASON FARE \$14.15

2-Daily trains from Portland  
7:45 A. M. 1:40 P. M.

Observation car on afternoon train, "Seashore Special"  
Ask local agent for information or write for booklet "Tillamook County Beaches."

John M. Scott, General Passenger Agent  
Portland, Ore.

## Southern Pacific Lines

Known For Its Strength

Washington, D. C., Oct. 6, 1915.

## First National Bank

PENDLETON, OREGON

is hereby granted the right to act as Trustee, Executor, Administrator and Registrar of Stocks and Bonds.

Federal Reserve Board.

By C. S. Hamlin, Governor.

SECURITY

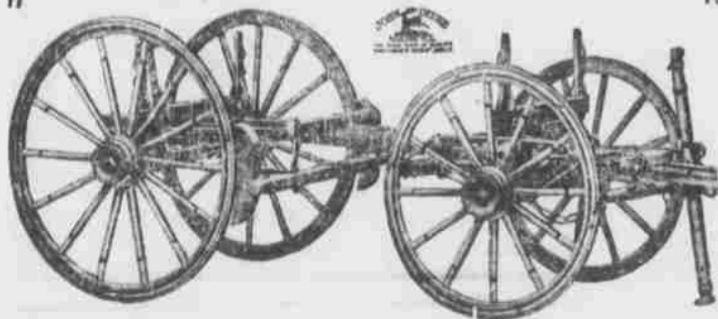
# Here are THE WAGONS

THAT HOLD THE ROAD—PULL EASY AND TURN NICE UNDER A LOAD.

## PETER SCHUTTLE WAGONS 'THE OLD RELIABLE'

Made in Chicago since 1843.

The Peter Schuttler Mountain Wagon, because of its durability and easy running, was the favorite of our grandfathers who crossed the plains in '49.



## The Famous John Deere

IRON-CLAD MOUNTAIN WAGON

is known as the quality wagon. Its right material and construction mean long life and satisfactory service.

If you are thinking of buying a wagon, don't forget the three essential factors to look for—performance, durability and price. Then let us explain our guarantee.

## McCLINTOCK & SIMPSON

400 East Court Street.

Telephone 610

## Hog Market Firmer and 15c Higher

PORTLAND, Aug. 15.—Hog market was firmer and 15c higher than last week's extreme level. One small lot was sold early in the day at \$9.90 but the bulk of the initial trading was around \$9.90 to \$10.00 for top.

There was an increase in offerings of hogs at North Portland over Sunday, compared with the same day last week. Killers, however, were in the field as early bidders and eager to buy, and the advance was easily forced.

General hog market range:  
Choice light weight..... \$9.75 @ 9.90  
Good light weights..... 9.50 @ 9.65  
Medium weights..... 9.10 @ 9.25  
Rough heavy..... 8.70 @ 8.90

### Cattle Situation is Steadier.

With only a very limited supply of cattle reported in the yards over Sunday, the market acted somewhat better and fractionally higher prices were secured for some offerings. Total arrivals over Sunday were 530 head compared with 1025 last week, and 1111 head this same time a year ago.

General cattle market range:  
Prime light steers..... \$5.50 @ 5.75  
Prime heavy steers..... 5.00 @ 5.25  
Good light steers..... 6.00 @ 6.25  
Stockers and feeders..... 5.00 @ 5.75  
Prime dehorned cows..... 5.00  
Common cows..... 3.00 @ 4.00  
Bulls..... 2.50 @ 4.50  
Prime light veal calves..... 7.00 @ 7.50  
Prime heavy veal calves..... 4.00 @ 6.00

### Mutton and Lambs Firm.

While general prices showed little change, the market for mutton and lambs was firmer at North Portland. For extra good yearlings the trade is now quoting a firm market at \$6.50. Receipts at North Portland over Sunday were but 344 head, and some of these same direct to a local meat company.

General mutton and lamb market:  
Select spring lambs..... \$5.00 @ 5.25  
Ordinary lambs..... 4.50 @ 4.75  
Best yearlings..... 6.25  
Good to common wethers..... 5.75 @ 6.00  
Best ewes..... 5.00 @ 5.25  
Good common ewes..... 3.50 @ 4.00

Chicago wheat showed a rather heavy loss in price at the opening of the day's trading, but much strength was shown abroad. Locally the market is inclined to follow the foreign lead and country bids are reported showing a further fractional advance although confirmation regarding this is lacking.

The great weakness in Chicago during the early trading was in the September option, losses in the others at the start being moderate.

Broomhall cabled from Liverpool that wheat opened steady. Good demand for spot and export offers dearer. American shipments are lighter, with the largest percentage consigned to continent and the United Kingdom. Clearances from all ports are inadequate.

Argentine—Weather continues dry over a wide area. Export bids good as following the foreign rise, and holders show no disposition to press for sale. Crop accounts not favorable.

United Kingdom—Native offers light and foreign arrivals limited. Millers demand fair at best prices. Purchases are restricted by the high price and strong freights. Continental absorption continues and demand broadening. Advice from Canada from private sources reiterate prospects not favorable. Total shipments from North America last week: Wheat, 7,878,000 bushels; corn, 1,201,000 bushels; oats 4,345,000 bushels. Shipments of wheat to the United Kingdom this week from all ports 2,318,000 bushels, with the continent absorbing all export offers. Stocks and on passage both decreasing, distant offers firmly held.

Russia—Shipments last week 688,000 bushels wheat, all to France. Petrograd cables official estimate surplus new and old grain of all kinds 64,000,000 tons, of which about one fourth represents wheat. New crop prospects are not altogether favorable. Tonnage scarce.  
Flour—Selling price: Patent, \$6; Willamette valley, \$5.60; local straight \$5.40 @ 5.50; bakers' local, \$5.80 @ 5.90

140; Montana spring wheat, \$7.40; glabon, \$5.10 @ 5.20; whole wheat, \$6.20; spaham, \$6.00; rye flour 14.50 per barrel.

Hay—Huying price, new crop, Willamette valley Timothy, fancy, \$12.50; eastern Oregon-Idaho, fancy Timothy, \$11.50 @ 12.00; alfalfa, \$11.00 @ 11.50; valley vetch, \$11.00 @ 11.50; cheat, \$10.00 @ 10.50; clover, \$9.00 @ 10 per ton.

Grain Sacks—1916 nominal No. 1 Calcuttas, 11 1-4 @ 11 3-8c in carlots less amounts are higher.

Milbustuffs—Selling price: Bran, \$24.50; shorts, \$23.50 per ton. Rolled Oats—\$6.50 @ 6.75 per barrel.

Very sharp declines were forced for wheat a Chicago's closing, and as cash was unchanged at both Liverpool and London, the local market felt the strain somewhat. On the Merchants Exchange bids for bluestem were 2 1-2c lower, fortyfold 2 1-2c, club unchanged, Pife 1 1-2c lower and Russian 1c off.

August oats bids were unchanged likewise barley.

## ANOTHER U-BOAT IS SIGHTED OFF FISHER'S ISLAND

NEW LONDON, Conn., Aug. 15.—A Fishers' Island wireless operator said he had sighted a submarine off Montauk Point.

The operator said the submarine was too distant to determine its nationality and he was unable to make the submarine understand the wireless queries. The stranger evidently carried a high power equipment. American submarines carry a low power wireless. A shore lookout reported sighting the submarine off Fisher's Island, traveling west. It had one mast.

## NORTHWEST BOOSTING BUREAU IS PLANNED

SEATTLE, Aug. 15.—George Hardy former secretary of the Portland chamber of commerce has arranged a meeting here September sixth for representatives of railroads and civic organizations from many Oregon, Washington and Idaho cities to arrange for a central advertising bureau to boost the northwest. They may establish a bureau in Seattle.

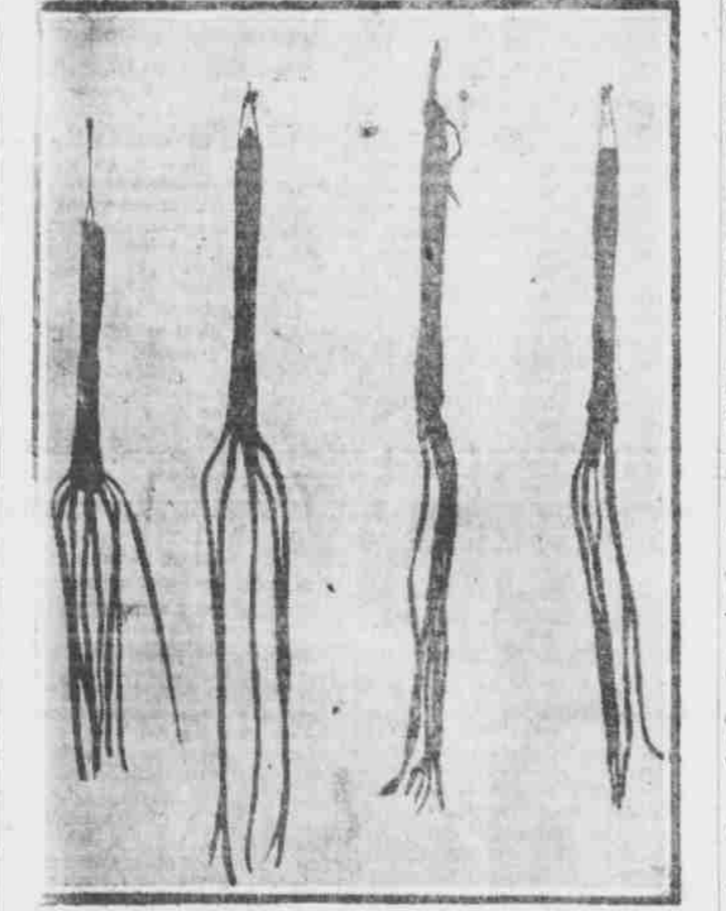
## WEATHER CHECKS EPIDEMIC

COLD WAVE HELPS TO REDUCE MORTALITY IN NEW YORK PARALYSIS CASES.

NEW YORK, Aug. 15.—Unusually cold weather has caused a reduction in infantile paralysis. Ninety five new cases have developed and thirty one new deaths.

- Church Corners Angeworms.
- MCGREGOR Iowa, Aug. 15.—
- Pastors of the Methodist Episc.
- copal church here have a close
- monopoly of the first class angle
- worm supply of this locality and
- they have forbidden any digging
- in the churchyard—that being
- the scene of the monopoly—on
- Saturday or Sunday, in the hope
- that those who can't fish will
- come to church.

## DID OFFICERS WHIP TROOPS WITH THESE?



British photographers at the front during the great drive, in which many German trenches have been taken, are authority for the statement that many cat-o-nine-tails were found in the German trenches, and this photograph shows four. The inference was drawn that German officers whipped

## WOMAN GOLF CHAMPION READY TO DEFEND TITLE



MRS. C.H. VANDERBECK.

Unless something unforeseen happens Mrs. Clarence H. Vanderbeck, the national woman golf champion, will be able to give a good account of herself in the tournament at the Essex County Club in October. Whether she wins or not, the Philadelphia Country Club woman at last wants to have a try in defence of her title. For quite a while she feared this would be prevented because of illness.

It will be remembered that a few weeks after Mrs. Vanderbeck won the title at Onwentsia last fall she had to give up the game because of a nervous breakdown and it was only about a month ago that she resumed playing. Those who have seen the champion on the links recently say she is as spry as well physically as ever. James Thompson, the Philadelphia Country Club professional, who has played with Mrs. Vanderbeck, expects to see her make a good showing in the national event at Manchester.

## Lunatics Make Escape From State Asylum

SALEM, Aug. 15.—John Thompson, a blacksmith, and W. A. McKay, have escaped from the state insane asylum. Thompson jerked off the bars. Officials say McKay is a dangerous lunatic.

## Brandeis Refuses to Discuss Meeting With Justice White

WASHINGTON, Aug. 15.—Brandeis has arrived here but refused to discuss his conference with Chief Justice White. It is understood that White objected to Brandeis becoming a member of the Mexican commission. Brandeis said there may be a statement later.

**\$100 Reward, \$100**  
The readers of this paper will be pleased to learn that there is at least one dreaded disease that science has been able to cure in all its stages, and that is catarrh. Catarrh being greatly influenced by constitutional conditions, requires constitutional treatment. Hall's Catarrh Cure is taken internally and acts thru the Blood on the Mucous Surfaces of the System thereby destroying the foundation of the disease, giving the patient strength by building up the constitution and assisting nature in doing its work. The proprietors have so much faith in the curative powers of Hall's Catarrh Cure that they offer One Hundred Dollars for any case that it fails to cure. Send for list of testimonials.  
Address: F. J. CHENEY & Co., Toledo, Ohio. Sold by all Druggists, 75c.

## Go East This Summer via Northern Pacific Low Round Trip Fares

Enjoy every moment of the circle tours via this line. Get additional scenery and service at no additional expense. Through daily trains to St. Paul, Minneapolis, Chicago, Kansas City-St. Louis with the best dining car service in the world.

## Enroute stop at Yellowstone National Park

Enter through Gardiner Gateway—original, scenic and only Northern entrance. Spend a week or month in America's greatest wonderland. See the wild animals, geysers, colored terraces, paint pots, Grand Canyon of the Yellowstone, etc. Excellent hotels.



Have you visited HAYDEN LAKE? Most beautiful spot. Hotels, camping, boating, fishing, golfing. Near Spokane.

Write, call or phone for tickets, information and travel literature. Let us arrange your vacation trip.  
**WALTER ADAMS**  
Agent, Pendleton, Ore.  
Asst. Gen'l Passenger Agent  
PORTLAND, ORE.

Round trip, westbound summer tourist tickets on sale daily—tell your eastern friends. Attractive Homeeekers tickets to Montana points and return.

# Now Open HIDAWAY SPRINGS

A Clean, Beautiful Resort at Which to Rest and Enjoy Yourself During the Hot Summer.  
In the Blue Mountains of Southern Umatilla County.  
**H. M. CULTER, PROP.**  
Dancing, Swimming, Hunting, Fishing, Etc.  
Hot Mineral Water Pool and Baths.  
Hotel Rate, \$10.50 Per Week INCLUDING BATHS.  
or \$2.00 Per Day  
COTTAGES AND TENTS FOR RENT.  
FREE CAMP GROUNDS.  
GOOD BARN AND INCLOSED PASTURE.  
Stage leaves Pendleton Tuesdays and Saturdays at 1 o'clock from French Restaurant. Hidaway stage meets Pilot Rock stage at Ukiah on Monday, Wednesday and Friday of each week.

**BETTER AND SOFTER LIGHT**

is assured by the use of some of these beautiful fixtures of ours. They give a light that illuminates the room perfectly, but that does not tire or strain the eyes. They are not expensive considering their extra efficiency and extra beauty. Why not at least see them?  
**J. L. VAUGHAN**

## CLASSIFIED DIRECTORY

**INSURANCE AND LAND BUSINESS**  
HARTMAN ABSTRACT CO. MAKES reliable abstracts of title to all lands in Umatilla county. Buys and sells all kinds of real estate. Does a general brokerage business. Pays taxes and makes investments for non-residents. Writes, fire, life and accident insurance. References, any bank in Pendleton.

**BENTLEY & MONTGOMERY, REAL ESTATE, fire, life and accident insurance agents.** 515 Main street. Phone 464.

**AUCTIONEERS.**  
OOL W. F. YOHNKA, AUCTIONEER, makes a specialty of farmers stock and machinery sales. "The man that gets you the money." Leave orders at East Oregonian office.

**SECOND HAND DEALERS.**  
V. STORIE, DEALER IN NEW and second hand goods. Cash paid for all second-hand goods bought. Cheapest place in Pendleton to buy household goods. Come and get our prices. 213 E. Court street. Phone 271W.

**ARCHITECT.**  
RAYMOND W. HATCH, ARCHITECT, 205 Duquain Building. Phone 245, Pendleton, Oregon.

**ATTORNEYS.**  
RALEY & RALEY, ATTORNEYS AT LAW. Office in American National Bank Building.  
GEORGE W. COUTTS, ATTORNEY AT LAW. Estimates settled, wills, deeds, mortgages and contracts drawn. Collections made. Room 17, Schmidt block.  
FEE & FEE, ATTORNEYS AT LAW. Office in Duquain building.  
CARTER & SMYTHE, ATTORNEYS AT LAW. Office in rear of American National Bank building.  
JAMES B. PERRY, ATTORNEY AT LAW. Office over Taylor Hardware company.  
PETERSON & BISHOP, ATTORNEYS AT LAW. Rooms 2 and 4, Smith-Crawford building.  
DOUGLAS W. BAILEY, ATTORNEY AT LAW. Will practice in all state and federal courts. Rooms 7, 5 and 6, Duquain building.  
FREDERICK STEINER, ATTORNEY AT LAW. Office in Smith-Crawford building.  
S. A. LOWELL, ATTORNEY AND CONSULTOR AT LAW. Office in Duquain building.

**FUNERAL DIRECTORS.**  
J. T. BROWN'S FURNITURE STORE. Funeral director and licensed embalmer. Most modern funeral parlor, morgue and funeral cars. Calls responded to day or night. Corner Main and Water streets. Telephone 63.  
JOHN S. BAKER, FUNERAL DIRECTOR and licensed embalmer. Opposite postoffice. Funeral parlor, two funeral cars. Calls responded to day or night. Phone 75.  
MONTANA FARM LANDS.  
NORTHERN PACIFIC RAILWAY. Lands in eastern Montana at \$2.50 to \$15 per acre. Suitable for farming or grazing. Easy terms. For information write or see W. R. Hill, Miles City, Montana.  
MISCELLANEOUS.  
LEGAL BLANKS OF EVERY description for county court, circuit court, justice court, real estate, etc., for sale at East Oregonian office.  
LEGAL BLANKS OF EVERY description for county court, circuit court, justice court, real estate, etc., for sale at East Oregonian office.