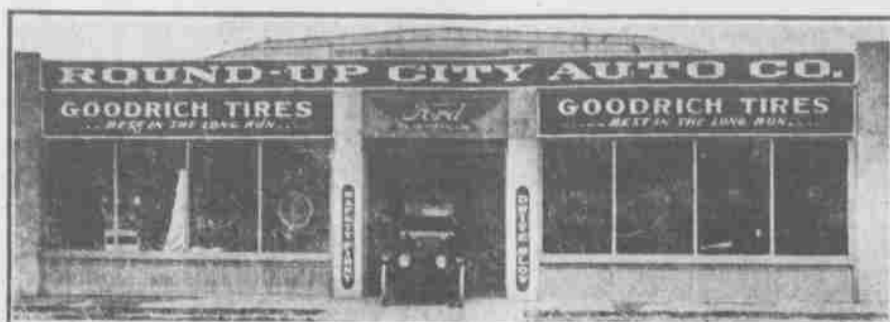


Ford Distributors for
Umatilla County



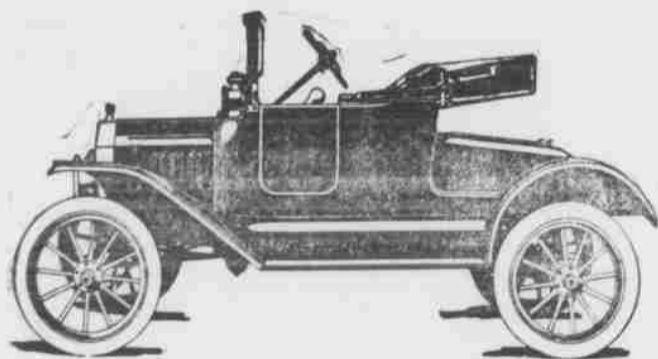
Exclusive Ford Garage
and Repair Shop

Round-Up City Auto Co., of Pendleton, Announce a
**GREAT DROP IN PRICE ON
FORD CARS**

EFFECTIVE AUGUST 1st, 1916



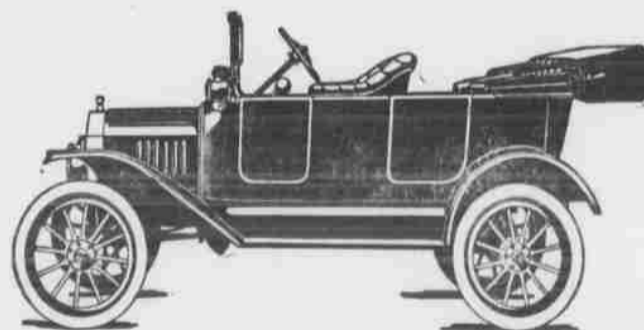
The Sensation of the Year in Motor Car Circles



FORD ROADSTER
\$397.⁴⁵

A cut of \$45.00 from the old selling price of \$442.45

SPECIFICATIONS:
Brakes: On transmission and rear wheels.
Carburetor: Special float feed.
Changing Gear: Planetary type.
Clutch: Steel disc.
Control Arrangement: Operator sits on left with brake and gear levers on left.
Cooling: Water, with thermo-syphon circulation and vertical tube radiator.
Cylinder: Four, cast en block, 3 3-4x4 inches, I-head.
Final Drive: Shaft.
Ignition: Single system, Ford magneto built into motor.
Speeds: Two forward and one reverse with direct drive on high speed.
Tires: Front, 30x3 inches; rear, 30x3 1/2 inches.
Type of Springs: Semi-elliptical, transverse.
Wheel Base: 100 inches.
 No options given on Colors, Tire or Equipment.



TOURING CAR
\$412.⁴⁵

A cut of \$80.00 from the old selling price of \$492.45

Same standard equipment as 1916 cars, except non-skid tires have been added on rear

How Can They
Do It?

The Ford Motor Company is one of the largest consumers of steel in the world—200,000 tons this year. The great volume of production—over 500,000 cars—and the efficient Ford manufacturing organization, brings production and selling costs down to a minimum. That's why Ford buyers get more car for less money. The new cars are made of the same vanadium steel and other high-class materials that have made the FORD car famous for durability.

Better Order Your
Car Today

Round-Up City Auto Company, Inc.

812 Garden Street

Umatilla County



Distributors

Telephone 651