

Electric Fans

for your office
or home

\$9.00

\$3.00 down
\$3.00 a month

Manufactured for and for sale by the

Pacific Power & Light Company

Easy payments make them easy to own.



A GROUP OF EXTRA-ORDINARY VALUES

In fine fixtures are now being shown by us. It affords you an excellent opportunity to purchase handsome chandeliers and side fixtures at remarkable savings. Included is a great variety of ceiling fixtures and lamps. We wish especially to have you see our fine dining room domes.

J. L. VAUGHAN

First National Bank

PENDELTON, OREGON

ESTABLISHED 1882

Known For Its Strength

ROUND-UP DATES.

The 1915 Round-up will be held on Sept. 23, 24, 25.

Facts Wanted Regarding Crop Yields; Farm Reports Desired

So much doubt exists this year regarding the wheat yield that the East Oregonian will endeavor to secure much exact data from first hand sources. With this aim in view farmers are asked to fill out the blank below as soon as their harvesting has proceeded sufficiently to give them an accurate line on what the yield will be. By special arrangement the information gathered in this manner will be tabulated and given to the government crop reporting officials, thus helping them adjust their estimates as to the actual yield. It is desirable to get the exact truth as to the situation and the co-operation of farmers will be appreciated.

Please fill out the following blank and mail the same to the East Oregonian. If you prefer to phone, do so. The East Oregonian's number is ONE.

Name

Address

No. of acres in wheat.....barley.....

Yield of wheat per acre

Average wheat yield per acre during past few yrs.....

Barley yield per acre

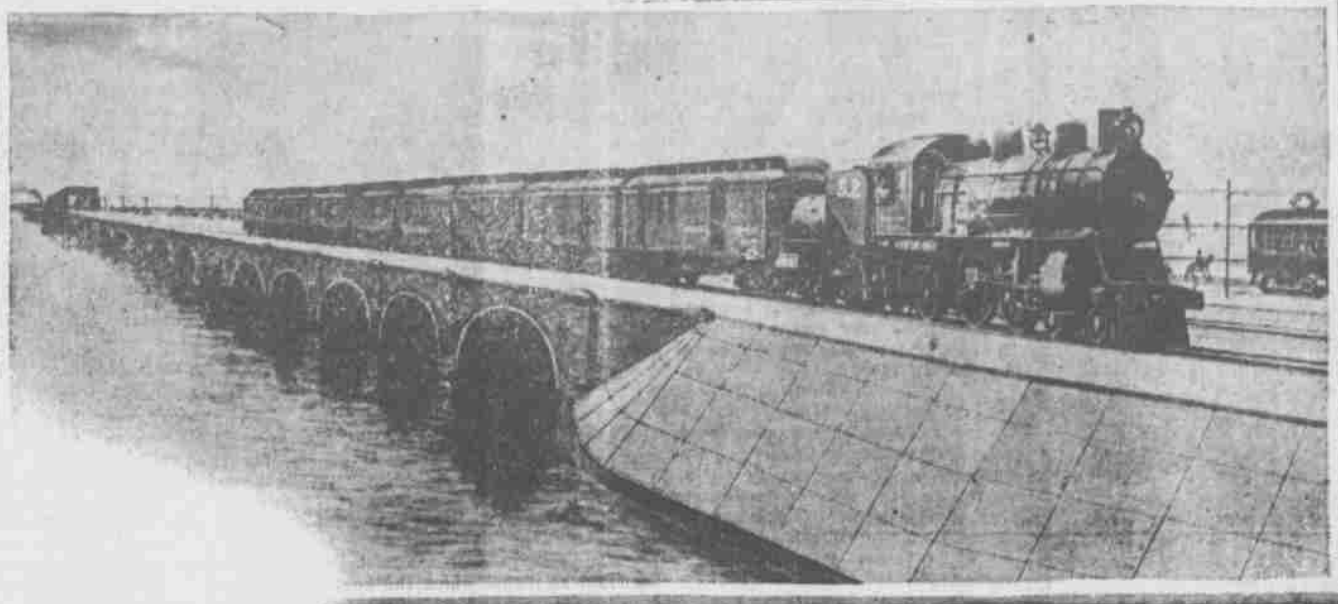
Average barley yield per acre during past few yrs.....

What variety of wheat gives heaviest yield.....

What variety of wheat suffered most from burning.....

What variety of wheat suffered least from burning.....

THE GREAT WALL WHICH SAVED GALVESTON



GALVESTON CAUSEWAY

The great concrete causeway connecting Galveston with the mainland. The causeway was built at a cost of about \$1,500,000 and was designed especially to resist the force of the heavy Gulf storms.

DALLAS, Tex., Aug. 24.—With Galveston, Houston and numerous smaller cities along the Gulf coast in Texas cut off from communication

for eighteen hours, the full extent of the loss of life and damage suffered from the West Indian hurricane which ripped its way inland on Monday night and Tuesday morning,

the city. The storm equalled in ferocity the great storm of September, 1900, when Galveston was all but destroyed. The giant sea wall saved the harbor and that many refugees left the city this time.

CATTLE MARKET PRICES GO UP

(Courtesy Monday's Journal.) PORTLAND, Ore.—Hogs were up 5c today and cattle brisk and steady. Receipts at the North Portland stock yards were heavy, 71 loads being received and trade in the pens this morning was active.

Sales of steers at 17 and of cows at 15.50 were made this morning. Lambs were reached just before noon, two sales at good prices being made.

General hog market range: Best light \$7.50-7.60 Medium light 7.20-7.35 Good to heavy 6.80-7.00 Rough to heavy 5.50-6.00

ENGLAND ADMITS THAT FRANCE HAS GROUNDS FOR NOT BEING SATISFIED WITH ALLY'S HELP

Note—The following article is in reply to that of William Philip Simms, Paris correspondent of the United Press, in which France's dissatisfaction with England's efforts as an ally was told. Simms sent a copy of his article to Keen in London.

BY ED L. KEEN. (United Press Staff Correspondent.) LONDON, Aug. 21.—(By Mail.)—England knows France is not satisfied with her.

The showing Great Britain has made with her land forces has not been all that France has had a right to expect.

Miss Madden married Frederick Smith a few months ago. She said that she had no idea that Riams had left his fortune to her until she received the notice from his mother. Mrs. Smith expects to go to Buffalo next week to claim her inheritance.

COMB SAGE TEA INTO GRAY HAIR

DARKENS BEAUTIFULLY AND RESTORES ITS THICKNESS AND LUSTRE AT ONCE.

Common garden sage brewed into a heavy tea, with sulphur and alcohol added, will turn gray, streaked and faded hair beautifully dark and luxuriant; remove every bit of dandruff, stop scalp itching and falling hair. Mixing the Sage Tea and Sulphur Recipe at home, though, is troublesome. An easier way is to get the ready to use tonic, costing about 50 cents a large bottle, at drug stores, known as "Wyeth's Sage and Sulphur Compound," thus avoiding a lot of fuss.

While wispy, gray, faded hair is not sinful, we all desire to retain our youthful appearance and attractive ness. By darkening your hair with Wyeth's Sage and Sulphur, no one can tell, because it does it so naturally, so evenly. You just dampen a sponge or soft cloth with it and draw this through your hair, taking one small strand at a time; by morning all gray hairs have disappeared. After another application or two your hair becomes beautifully dark, glossy, soft and luxuriant and you appear years younger.

ESPERANTISTS OF WORLD MEET.

SAN FRANCISCO, Aug. 23.—Leaders of the Esperanto movement from the principal nations are here today in the Eleventh International Esperanto Congress which will be in session for one week under the auspices of the Panama-Pacific Exposition.

Fire Is Fought All Night.

COLFAX, Colo., Aug. 23.—Fire fighters combated all night a fierce blaze which broke out near Iowa Hill. The alarm was sent from the forest lookout station in Bald Mountain, 32 miles distant. The rangers at Iowa Hill and Yankee Jim were notified.

Riches Willed to Plaque.

PUNXSUTAWNEY, Pa., Aug. 24.—Mrs. Fred Smith, of this city, formerly Miss Mary Haddon, has fallen heir to a fortune estimated at \$2,500,000. This sum was bequeathed her by Harry Riams, of Buffalo, N. Y., who died April 25, 1914. In addition Riams left his magnificent home to Mrs. Smith.

ARE WOMEN NATURALLY DESPONDENT?

A prominent writer 30 claims. Women are constituted with a delicate organism and in nine cases out of ten mental depression may be attributed to an abnormal condition of the system, which expresses itself in nervousness, sleeplessness, backache, headaches, causing constant misery and as a result despondency.

Second Hand Dealers.

V. STROBLE, DEALER IN NEW and second-hand goods. Cash paid for all second-hand goods bought. Cheapest place in Pendleton to buy household goods. Come and get our prices. 319 E. Court street. Phone 211W.

MALE HELP WANTED.

WANTED—GOOD LIVE CANVASSER to represent us in Eastern Oregon Commission proposition. Cash weekly. Pacific Nursery Co., 122 1-2 Grand Ave., Portland, Ore.

CLASSIFIED DIRECTORY

FUNERAL DIRECTORS.

JOHN S. BAKER, FUNERAL DIRECTOR and licensed embalmer. Opposite postoffice. Funeral parlors, two funeral cars. Calls responded to day or night. Phone 75.

INSURANCE AND LAND BUSINESS.

HARTMAN ABSTRACT CO. MAKES valuable abstracts of title to all lands in Umatilla county. Buys and sells all kinds of real estate. Does a general brokerage business. Pays taxes and makes investment for non-residents. Writes fire, life and accident insurance. References, any bank in Pendleton.

ATTORNEYS.

BAILEY & BAILEY, ATTORNEYS AT LAW. Office in American National Bank Building.

PHYSICIANS.

DRS. WHITAKER & WOOD, DENTISTS. Office hours 9 a. m. to 6 p. m. Milarkey building, Pendleton Oregon.

VETERINARY SURGEONS.

C. W. LASSEN, M. D. V. COUNTY veterinarian. Residence telephone. 27; office telephone, 10.

MISCELLANEOUS.

TRESPASS NOTICES, STALLION season cards and sale bills of every description printed at reasonable prices at the East Oregonian. We have a fine lot of stock cuts that our patrons are allowed the free use of.

Vacation Journeys

AT LOW ROUND-TRIP FARES VIA

UNION PACIFIC SYSTEM

TO NORTH BEACH

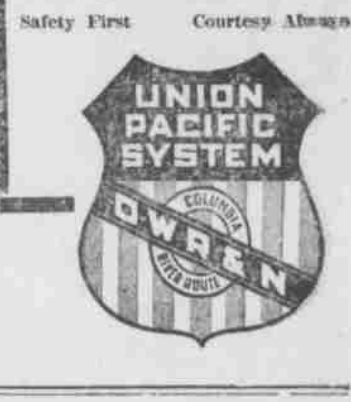
"Where Cool Sea Breezes Blow." 26 miles of smooth, white beach; a score of interesting beach towns; many excellent hotels and resorts; everything necessary for seashore outings. For real rest and recreation—go to North Beach Round Trip Fare, \$13.15.

CIRCLE TOURS OF THE EAST

Including a visit to the world-famous California Expositions on going or return trip. The opportunity of a lifetime. The most wonderful shows the nation has ever seen. Do not miss them.

YELLOWSTONE NATIONAL PARK The Wonderland of America. Open until September 15. Visit the Park this year in connection with your summer trip east or to the expositions. Direct line and thru sleeping-car service to Southern Entrance. Ask for fares, folders, etc.

Let us help you plan your trip. Effortless travel service our hobby. Tickets, reservations, information, upon application to T. F. O'BRIEN, Agent O-W. R. & N.



THE QUELLE RESTAURANT

Open Day and Night Special Evening Lunches

Meals 25c and up

Fine, Clean Furnished Rooms in Connection—Steam Heated

Gus LaFontaine, Prop.

BEAVER ENGRAVING COMPANY

PORTLAND