

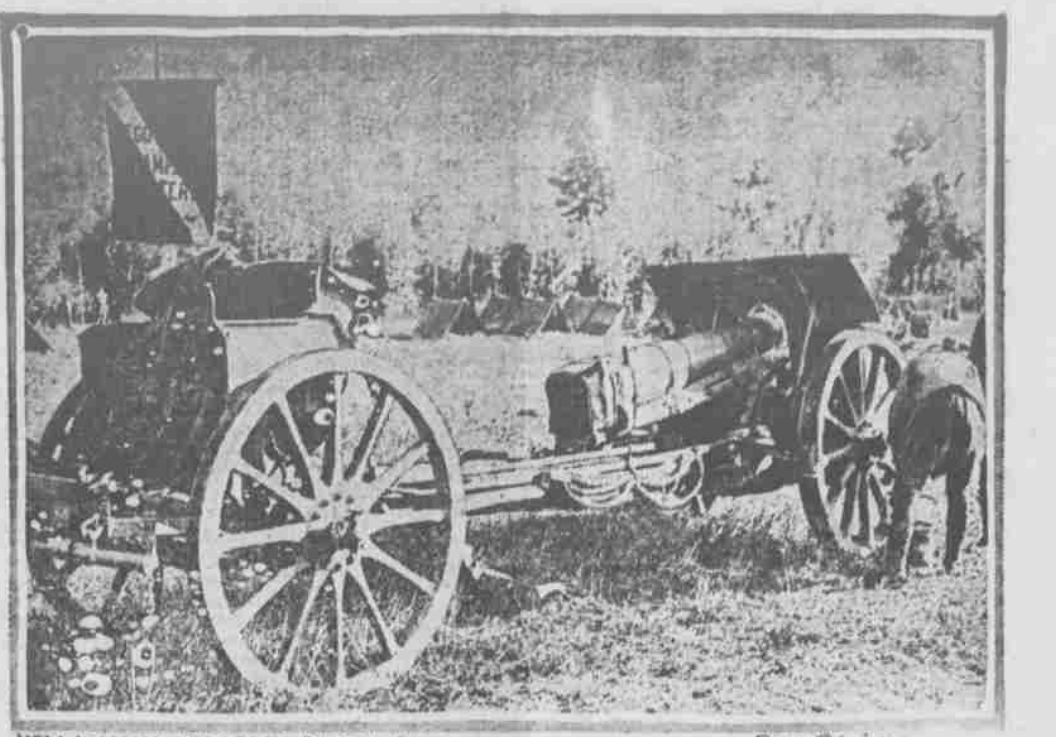
**Kelley's Auto Repair Shop**  
New and second hand cars bought and sold.  
Cottonwood St., Opposite City Hall. Phone 181.

**Try "GETS-IT," It's Magic for Corns**  
New, Simple, Common-Sense Way.  
You will never know how really easy it is to get rid of a corn, until you have tried "GETS-IT." Nothing like it has ever been produced. It takes less time to apply it than it does to read this. It will dump



Kelley's Corn-pain in Every Nerve Use "GETS-IT" It "Gets" Every Corn Surely, Quickly!

**Con Dung Low CHOP SUEY NOODLES**—Chinese Style  
**HOT TAMALES CHILLIGON CARNE**—SPANISH STYLE  
**LUNCHES COFFEE**  
Everything clean and up-to-date: **FIRST CLASS SERVICE**  
**TEA 5c Package**  
**Under State Hotel**  
Cor. Webb and Cottonwood Sts. Phone 547 Pendleton, Ore.



NEW ITALIAN ARTILLERY BATTERY

In these days when it appears that it is but a matter of hours when Italy shall be at war with her former allies, it is of interest to know her military equipment.  
The great Krupp Iron Works are known the world over and many times has it been hinted that the Germans really had no complaint to make against the ammunition manufacturers of the neutral United States since they are even now fighting against and being killed by cannon and shells made by the Krupp in Germany and sold to France. Whether this report is true or not cannot now be ascertained but should Italy enter the war German guns certainly will be used against her makers.  
The picture shows an Italian artillery corps ready for action. The gun is one of the newest models of the Krupp factory.

**The Foundation of Business**  
is built with a bank account. Save your money—let your banker know you, and when the time comes he will be ready to help you.  
Don't expect a banker to help you unless time and conscientious dealings have proven you worthy of banking confidence.  
**THE American National Bank OF PENDLETON, OREGON**  
Capital and Surplus \$400,000.00  
**STRONGEST BANK IN EASTERN OREGON.**

**INTERIOR CROPS IN FINE SHAPE**

(Thursday's Market.)  
PORTLAND, Ore.—That grain crop conditions in the interior are the best in years, was the assertion made today by F. B. Stephenson, head of the coffee department of Wadhams & Co., who has just returned from a three weeks trip through the interior ending in Montana.  
"Timely rains have done wonders for the grain crops," says Stephenson. "While I have not been over all parts of the interior, the sections I have visited are reported excellent by other travelers."  
"If one gets away from the coast there is no such thing as business depression. Montana has not been so prosperous for many a year as at this time. High prices were realized for grain, wool, mutton, horses and metals."  
"Around Butte, conditions are extraordinarily good. I actually did more business in Montana this trip than ever before. With copper at 130 to 200 a pound and all mine employees participating in the high prices, business conditions are excellent. They tell me that none of the miners are getting less than \$4 a day at this time."  
"Northwest Montana had very timely rains and the grain crops are in excellent condition."  
Wheat business continues to be offered by the central west and the east with increased orders reported from the interior.  
Australia is still a factor in the oats trade as well as in wheat, but the difficulties of securing transportation acting as a stoppage to trade.  
Flour—Selling price: Patent 46.40; Willamette valley, 36.40; local straight 45.70; bakers' 46.60 @ 6.88; export 44.50.  
Hay—Buying price, Willamette valley timothy, fancy, \$12.50 @ 13; eastern Oregon-Idaho fancy timothy \$15; alfalfa, \$13 @ 13.50; vetch and oats \$11; clover, \$8 @ 9 per ton.  
Grain Sacks—1915 nominal: No. 1 Calcutta, 7 1/4 @ 1-2c.  
Rolled Barley—Selling price \$29 @ 30.00.  
Corn—White, 34 @ 35; cracked 35 @ 36.50 per ton.  
It was a queer market indeed for cash wheat today on the Portland Merchants' Exchange. It was queer in more ways than one. Sales were actually made at 1c above the asking price for red Russian. The regular quoted bids for spot red Russian were at \$1.02 with bidders asking but \$1.04. Despite this buyers, out of the goodness of their hearts, paid \$1.07 for one lot of 5000 bushels of prompt red Russian while a similar amount went at \$1.06. Other sales included 5000 bushels, June bluestem at \$1.17 and 10,000 bushels at \$1.18.

**GRASS CATTLE IN THE MARKET**

(Courtesy Thursday's Journal.)  
PORTLAND, Ore.—First California grass fed cattle of the season entered the North Portland market, there by opening the grass cattle season here. The shipment consisted of 13 cars from Mercer and was brought forward by A. F. Hunt, the veteran cattleman of the yards.  
That there is a smaller supply of cattle available in California this season than the general trade had believed was the statement made to The Journal by Mr. Hunt today.  
"Cattle are less plentiful in the south than we had been led to expect," says Hunt. "Little real fat stuff is available there at the present time and these come only from favored sections. The feed is still too soft in the south."  
"It will be some time, probably about the middle of June, before cattle shipments will be available in any fair supply from northern California this season."  
Cattle market conditions are rather favorable in the North Portland market at this time. Extreme tops for the California grass stuff reached \$7.75, which is considered very favorable. This was for light weight offerings of quality. Heavier stuff sold down to \$7.00.  
Aside from the California offerings there was only a very limited supply of cattle available for the trade at North Portland today.  
General cattle market range:  
Select steers ..... 48.00 @ 52.00  
Best hay fed steers ..... 7.75  
Good to choice ..... 7.25 @ 7.35  
Ordinary to fair ..... 6.90 @ 6.75  
Best cows ..... 6.50 @ 6.75  
Good to prime ..... 6.25 @ 6.40  
Select calves ..... 5.50 @ 6.00  
Ordinary bulls ..... 4.90 @ 5.00  
**Hog Market Softer.**  
Market for hogs is softer at North Portland. There was only a small run reported in the yards at the opening of today's trade. While demand continues good, recent price losses at stockyard points east of the Rockies had a depressing effect upon values here. Tops were generally quoted around \$18 @ 19, which is still a very substantial premium over any other recognized stockyard market in the country.  
The hog market trade ruled steady to weaker at most points in the east today.  
General hog market range:  
Sleeft light ..... 48.00 @ 53.00  
Medium light ..... 8.00 @ 8.45  
Good to heavy ..... 7.75 @ 7.90  
Rough and heavy ..... 7.10 @ 7.35  
**Mutton Market is steady.**  
At the prices of yesterday, market for mutton and lambs was considered just about steady at North Portland today. There was only a very small run reported in two loads coming from Salem and a similar amount from Junction City.  
Mutton trade conditions in the eastern markets are likewise showing somewhat with lower prices quoted at some points.  
General mutton range:  
Spring lambs ..... 5 ..... 8.25  
Grain fed shorn yearlings, 7.15 @ 7.35  
Best shorn wethers ..... 6.25  
Best shorn ewes ..... 5.90 @ 5.25  
Wool stock is generally quoted at \$1.00 higher than shorn.  
**Livestock Shippers.**  
Hogs—Barclay & Cummings, Corvallis, 1 load; P. Thompson, Lebanon, 1 load; J. C. Nelson, Roosevelt, Wash., 1 load.  
Cattle—A. F. Hunt, Merced, Cal., 11 loads.  
Sheep—H. A. Banderwert, Salem, 2 loads; J. S. Flint, Junction City, 2 loads.  
Mixed stuff—H. J. Harris, Redmond, 1 load cattle and hogs; Patton, Overton & Falk, Halsey, 1 load cattle, calves and hogs.

**CHICAGO WHEAT RISES AT CLOSE**

(Thursday's Market.)  
CHICAGO, Ill.—Wheat closed 1-5 @ 1-4c higher.  
Prices were slightly higher in the pit at the opening today.  
May wheat opened at \$1.51 1-2 a bushel, a gain of 1-4c over last night; July was up 3-4c at the start and September opened with an advance of 1c.  
Crop reports were of a bullish nature. Trading was extremely dull. The foreign news today was conflicting.  
Corn prices were 1-4c to 3-8c higher at the outset of the trading. There was evidence that farmers were loosening up on corn and an increased movement was looked for.  
Oats started slightly higher. Trading in provisions was small with a narrow range in values.  
**WHEAT.**  
May—Open, \$1.51 1-2; high, \$1.53; low, \$1.51; close, \$1.52 1-2.  
July—Open, \$1.26, high, \$1.27 1-4; low, \$1.25; close, \$1.26 3-8A.  
Sept.—Open, \$1.20; wheat, \$1.21 1-2; low, \$1.20 1-8; close, \$1.20 1-2.

**Low Excursion Fares**  
Tickets on sale daily by  
**NORTHERN PACIFIC RY.**  
TO THE EXPOSITIONS  
SAN FRANCISCO AND SAN DIEGO  
In connection with  
**THE PALATIAL STEAMSHIP "NORTHERN PACIFIC"**  
Ask About  
**EASTBOUND SUMMER EXCURSION FARES**  
In effect May 15 and daily thereafter, to all Eastern Points. Stopovers permitted and return limit Oct. 31  
Through Trains Daily to Minneapolis, St. Paul, Chicago, St. Louis.  
**NORTHERN PACIFIC**  
JUNE 15 TO SEPT. 15  
THE 1915 PARK SEASON  
Visit  
**YELLOWSTONE PARK**  
Reached via original entrance at Gardiner Gateway. Low fares daily during season.  
L. M. CONRY, T. P. A., Spokane, Wn.  
WALTER ADAMS, Agent, Pendleton, Oregon.  
A. D. CHARLTON, A. G. P. A., Portland, Oregon.

**SAGE TEA TURNS GRAY HAIR DARK**

**IT'S GRANDMOTHER'S RECIPE TO BRING BACK COLOR AND LUSTRE TO HAIR.**  
That beautiful, even shade of dark, glossy hair can only be had by brewing a mixture of Sage Tea and Sulphur. Your hair is your charm. It makes or mars the face. When it fades, turns gray, streaked and looks dry, wispy and scraggy, just an application or two of Sage and Sulphur enhances its appearance a hundred fold.  
Don't bother to prepare the tonic; you can get from from any drug store a 50-cent bottle of "Wyeth's Sage and Sulphur Compound," ready to use. This can always be depended upon to bring back the natural color, thickness and lustre of your hair and remove dandruff, stop scalp itching and falling hair.  
Everybody uses "Wyeth's Sage and Sulphur" because it darkens so naturally and evenly that nobody can tell it has been applied. You simply dampen a sponge or soft brush with it and draw this through the hair, taking one small strand at a time; by morning the gray hair has disappeared, and after another application it becomes beautifully dark and appears glossy, lustrous and abundant.

**What War Means.**

MINOT, N. D., May 21.—John and Edward Baker, who live in East Prussia, will receive a letter from their brother here, telling them their mother, less than thirty miles from them is dead. The letter will travel 12,000 miles to get to them, less than 30 miles away. The reason is that a German line is between them and their maternal home.

**I Can Succeed**

"What other men have accomplished through I. C. S. help, I can accomplish. If the I. C. S. have raised the salaries of these men, they can raise MY salary. If others have won out through I. C. S. help, I can win out. To me, I. C. S. means 'I Can Succeed.'"  
Get the "I-Can-Succeed" spirit; for the I. C. S. can raise your salary—whether you are a dollar-an-hour man; a long-hour man or a short-hour man; a young man or an old man; an inside man or an outside man; or whether you live in Europe, Asia, Africa, America, or Australia.  
On an average, 300 students every month voluntarily report bettered positions and increased salaries as the direct result of I. C. S. help. Through I. C. S. help failures have become successes. Through I. C. S. help men already in good positions have advanced to still better positions. A responsible position is awaiting you. To learn all about it, mark and mail the attached coupon.  
If you can read and write, the I. C. S. will go to you and train you in your spare time for a well-paid position in the line of work you like best. I. C. S. students do not have to leave home nor lose even an hour from work. I. C. S. Courses are prepared especially to suit the requirements of those having to get their technical education in spite of difficulties. The I. C. S. way makes everything clear and simple. No matter what time of day or night your spare time comes, the International Correspondence Schools are ready when you are. To mark and mail the attached coupon will cost you nothing but postage and place you under absolutely no obligation.  
**Send the coupon NOW.**

**CLASSIFIED DIRECTORY**

**FUNERAL DIRECTORS**  
JOHN S. BAKER, FUNERAL DIRECTOR and licensed embalmer. Opposite postoffice. Funeral parlor, two funeral cars. Calls responded to day or night. Phone 75.  
**ATTORNEYS**  
RALEY & RALEY, ATTORNEYS-AT-LAW. Office in American National Bank Building.  
FEE & FEE, ATTORNEYS AT LAW. Office in Despain building.  
CARTER & SMYTH, ATTORNEYS AT LAW. Office in rear of American National Bank Building.  
JAMES B. PERRY, ATTORNEY AT LAW. Office over Taylor Hardware Company.  
PETERSON & BISHOU, ATTORNEYS AT LAW; rooms 3 and 4, Smith-Crawford building.  
DOUGLAS W. BAILEY, ATTORNEY AT LAW. Will practice in all state and federal courts. Rooms 1, 2, 3 and 4, over Taylor Hardware Co.  
GEORGE W. CUTTS, ATTORNEY AT LAW. Estates settled, wills, deeds, mortgages and contracts drawn. Collections made. Room 17, Schmidt block.  
FREDERICK STEIWER, ATTORNEY AT LAW. Office in Smith-Crawford building.  
S. A. LOWELL, ATTORNEY AND counselor at law. Office in Despain building.  
**PHYSICIANS**  
DRS. WHITAKER & WOOD, DENTISTS. Office hours 9 a. m. to 5 p. m. Milarkey Building, Pendleton, Oregon.  
LEGAL BLANKS OF EVERY DESCRIPTION for county court, circuit court, justice court, real estate, etc. for sale at East Oregonian office.  
**VETERINARY SURGEONS**  
C. W. LASSEN, M. D., V. COUNT. Veterinarian. Residence telephone, 27; office telephone, 70.  
**SECOND-HAND DEALERS**  
V. STROBLE, DEALER IN NEW and second-hand goods. Cash paid for all second-hand goods bought. Cheapest place in Pendleton to buy household goods. Come and get our prices. 219 E. Court street. Phone 271W.  
**AUCTIONEERS**  
COL. W. P. YOHNKA, AUCTIONEER makes a specialty of farmers' stock and machinery sales. "The man that gets you the money" Leave orders at East Oregonian office.  
**MALE HELP WANTED**  
WANTED—GOOD LIVE CANVASSER to represent us in Eastern Oregon. Commission proportion. Cash weekly. Pacific Nursery Co., 122 1-2 Grand Ave., Portland, Ore.  
**MISCELLANEOUS**  
WANTED—PARTY WILL PAY Cash or give trade for Umatilla county farm, \$10 to \$20 per acre. Address Box 11, Athens, Ore.  
**BEAVER ENGRAVING COMPANY**  
The work of the Engraver is guaranteed.

**First National Bank**  
PENDLETON, OREGON  
ESTABLISHED 1882  
Known For Its Strength