

Womens Suits Sacrificed



LADIES, THIS IS YOUR BEST CHANCE TO BUY A SPRING SUIT. AND PLEASE BEAR IN MIND TOO THAT THESE SUITS ARE THIS SEASON'S NEWEST AND MOST DESIRABLE STYLES. DON'T FOR ONE MOMENT THINK THAT THEY ARE LAST SEASON'S GOODS. THEY ARE THE NEWEST AND BEST YOUR MONEY CAN BUY. DON'T FOOL YOURSELVES BY NOT TAKING ADVANTAGE OF THIS MOST REMARKABLE LOT OF BARGAIN PRICES.

\$40.00 Suits Reduced to	\$21.95
\$37.50 Suits Reduced to	\$19.85
\$30.00 Suits Reduced to	\$15.85
\$25.00 Suits Reduced to	\$13.95
\$20.00 Suits Reduced to	\$11.90

NO PERSON WITH ANY POSSIBLE NEED OF A SUIT CAN POSSIBLY AFFORD TO LET THIS SALE PASS WITHOUT INVESTIGATING. COME NOW WHILE CHOOSING IS GOOD.

MEN'S NEW STRAW HATS
Straw hat day will soon be here. Maybe you'd like to get in ahead of the general rush and pick from the stock first. We'll be glad to show them to you. Prices range from \$1.50 to \$4

MEN'S SPRING AND SUMMER UNDERWEAR

At least 75% of all the men's underwear we sell is union suits. We specialize on them, showing a complete line of "Coopers Kenosha Klosed Krotch" garments. We think they are the best your money can buy for a good many reasons.

1st—They have the original Cooper Closed Krotch.
2nd—The values are the best we ever saw.
3rd—They fit as no other union suit do.
Come and look them over.

DIMITY VOILE

A splendid wash fabric of white and tinted grounds with small neat floral effects; all shades; makes up into beautiful wash dresses; 40 inches wide. The yard 35¢

HOW ABOUT T. P. W. TRADING STAMPS?

ARE YOU SAVING THEM?
Don't miss saving T. P. W. trading stamps. You can't afford to. They offer you too big a saving to be overlooked. If your employer would raise your salary 5% you'd think he was a prince—that's just what T. P. W. trading stamps will do if you'll let them.

BARGAIN BASEMENT BARGAINS

\$1.50 Women's Waists	59¢
75c Women's Waists	39¢
\$1.50 Women's House Dresses	79¢
\$1.50 Women's Lawn Waists	39¢
\$7.50 Misses' Riding Dresses	\$2.98
\$1.50 Women's Kid Gloves	49¢
15c Lawns for Summer Dresses	10¢
\$1.50 Men's Canvas Shoes	98¢
\$1.00 Men's Overalls, pair	73¢
Up to \$3.50 Children's, Boys and Misses' Shoes	\$1.29

WOMEN'S NEW MOTOR COATS

The very latest out. Palm Beach Coats in the smartest styles. Made with high crush collar. They are the latest shown in washable coats for motoring.

Pongee and Cloth of Gold Coats. Lined with striped silk, black velvet collars, finished with large buttons. Priced from \$27.50 to \$37.50

ARE YOU GOING AWAY?

If you contemplate going away this summer, to the coast, resort of any kind, on to the fair, you'll need a dress or suit that will stand the wear.

OUR SILK AND WOOL POPLIN

is the fabric that will fill the bill. 40 inches wide; comes in all wanted shades, golden brown, Copenhagen, Belgian, delft, national, tobacco, Russian, black, etc. A very stylish as well as practical silk. The yard 98¢

IMPORTED JAP CREPE

Finest quality imported Japanese crepe, for waists and dresses; comes in white only; soft as silk; launders fine. The yard 65¢

The Peoples Warehouse

WHERE IT PAYS TO TRADE SAVE YOUR T. P. W. TRADING STAMPS

TEAL'S ADDRESS

(Continued from page one.)

It is not my purpose to make an address, but it is my desire at this time to give you a few facts in connection with this canal. Although the improvement of this stretch of the river has been under construction for more than 40 years, actual construction was not commenced until October, 1915. Since then work has progressed as rapidly as appropriate by the government would permit.

The estimated cost of the canal was \$4,845,000. The first work done was under contracts and at a very favorable figure. Thereafter, beginning in July, 1910, the work was done by hired labor, and, except for the construction and installation of lock gates and small bridges, the canal was completed under this method. This work furnishes, therefore, an excellent opportunity to test the statement so often made that work undertaken by the government and done by it direct is more costly than the same work done under contract. As a matter of fact the total cost up to May 1 of this year, including all retained balances on contracts and other outstanding liabilities, will be about \$4,745,000, or about \$100,000 less than the estimate. Included in this cost, however, is about \$300,000 in plant, out of which there will be considerable salvage, which will be credited back to the appropriation. It also includes a number of buildings originally not provided for; and it is perfectly safe to say that the cost of the canal is at least \$250,000 under the estimate.

\$300,000 Saved.
The percentage of work done by contract was a little less than one-fifth, and the average cost of the work done was less than that done by contract, even though the contract price was very low. But the chief saving was in the greater flexibility and ease in changing plans to effect economies; and from information I have received I think I am quite within the mark when I state that such changes as have been made have resulted in a saving of \$300,000 and possibly more. The officers in charge of this work from 1909 to 1915 were as follows:
Major W. C. Langfitt, Lt. Col. S. W. Roessler, Major J. F. McIndoe, Major J. B. Cavanaugh (temporarily for four months), Lt.-Col. Jay J. Morrow (from March, 1910, to date).
Assistants—Captain A. A. Fries (under Col. Langfitt), Capt. Henry H. Robert (1910-1913), Capt. Theo. H. Dillon (1913-1915).
Civilian engineers—Mr. Fred C. Schubert, assistant engineer; Mr. G. E. Goodwin, assistant engineer; Mr. W. G. Carroll, junior engineer; Mr. J. B. Brownlee, junior engineer; Mr. J. H. Polhemus, junior engineer; Mr. Frank Saunders, junior engineer.
Mr. A. Seymour Fleet, who designed the gates for Cascade Locks, also designed these gates.
It is but due to Mr. Fred C. Schubert to state that he has been with the work throughout its entire life, and a more enthusiastic and devoted officer it would be hard to find.

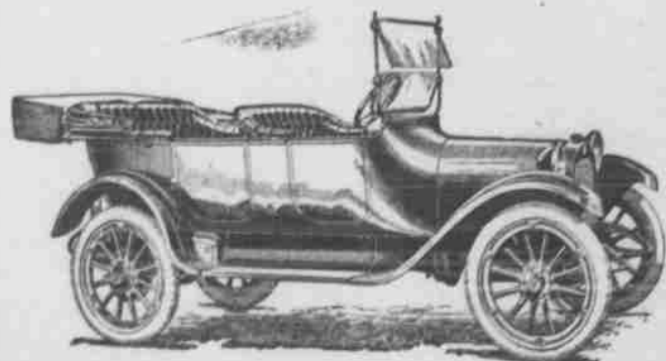
UNSIGHTLY ECZEMA ON SISTER'S FACE

Fiery Red, Itched and Burned, Scratched Incessantly. Broke Out on Entire Body. Used Cuticura Soap and Cuticura Ointment. In One Month Healed.

109 Hazel St., Chico, Calif.—"When my sister was a few weeks old a rash came out on her face. It got worse and when about six months old it was pronounced to be weeping eczema. The breaking out was unsightly at times. It looked as though the blood was going to burst through the skin. Where she rubbed, the skin would peel off. The water came through the skin. When the eczema was at its worst her face was fiery red. It itched and burned a great deal and she scratched at it incessantly. She would turn in her sleep and scratch and rub her face. At the age of ten months it broke out on her entire body.
"We used medicine, some of which was so strong she cried when it was put on. When she was a year old we got Cuticura Soap and Ointment and used them on her. They began to do wonders. With one treatment she was perfectly improved and in a month she was completely healed." (Signed) Miss Leone Hintz, June 25, 1914.

Sample Each Free by Mail
Write 32-p. Skin Book on request. Address post-card "Cuticura, Dept. T, Boston." Mail throughout the world.

DODGE BROTHERS MOTOR CARS



The wheel base is 110 inches. The price of the car complete with extra tire, tube and chains is \$900.

Your enthusiasm over one feature has scarcely subsided before you discover that another and then another reaches the same high plane.

Pendleton Auto Co.

Phone 541 812 Johnson Street

have gone into these details at some length in order that justice might be done to the corps of engineers of the United States army, which corps has in charge in addition to its other duties, the work of the river and harbor improvement of this country.

The result of this particular improvement demonstrates that where the engineers have the opportunity they secure results. The handicap they labor under, what with intermittent operation and various limitations, both under the law and otherwise, is but little realized by the people generally; and I am glad to have this opportunity to express my respect and honor for them, representing as they do a branch of the service that has been distinguished throughout its entire life for honor, integrity and ability.

On October 22, 1905, and again on their return on April 19 of the following year, the Lewis and Clark expedition, inaugurated and made possible by that great statesman, Thomas Jefferson, made a portage around Cello Falls. It is interesting to note that the obstruction to navigation at this point has been used as a never-failing means of extorting tribute in one form or another from the public, for its control meant not only the control of the traffic in general but at times of men as well.

Indian Troubles.
From the time of the first settlement on the Columbia river at Astoria by the Pacific Fur company on April 12, 1811, until after the arrival of Dr. John McLoughlin as chief factor of the Hudson Bay company in 1824, there was trouble with the Indians at Cello. Their control of the portage practically prohibited other Indians from traveling between Cello and the lower Cascades. They acted as traders, purchasing commodities from the Indians above Cello and other commodities from those below the lower Cascades, thus acting as both buyers and sellers, making a profit out of both ends of the transaction and keeping the trade wholly in their own hands. Until about 1833 transportation companies had exercised substantially the same control as did the Indians in the earlier days. Prior to the time of the completion of the railway along the Columbia river traffic could be handled only by steamer, and a portage around Cello Falls was necessary. Competition on the river was impossible, as the company controlling the portage would not transport goods over its road for steamboats other than its own. Even with the completion of railway and the substitution of rail for water transportation, this obstruction in the river continued dominant, and not only prevented the use of the river for navigation, but also helped to maintain high rates by rail.

Thus we find that whether the portage was in the hands of Indians or Anglo-Saxon it served its hold up purpose equally well. Indeed it would be difficult to capitalize and put in exact figures the value which in the past this obstruction to commerce has represented to those in control of it. It would run to a magnificent amount, and, if it could have been continued indefinitely, with the growth and development of this country it would have become a prize well worth striving for. Perhaps the history of this portage will serve to explain why so much opposition to similar projects such as the Panama canal, and indeed to the improvement of waterways generally, is made.

The Shackles Broken.
So far as Cello is concerned, however, the shackles are broken. The river is free at last, and tolls based on the control of this portage will no longer be levied either by red man or white man. One chain was sundered at the Cascades; another we are breaking today; soon Priest Rapids will be freed, and then our dream will almost be realized.
I may also say that we have not been idle in other directions and that while the engineers were clearing channels, building locks and digging canals, others were working on the no less important work of freeing our rivers from a control that tended to make these improvements of no avail, even after our millions were spent. I refer to railroad-owned and controlled boat lines, which throttle real competition and prevented all true use of our waterways as instrumentalities of commerce. We are celebrating not only the opening of this Cello canal, but a river free in truth and in fact; for now, after all these years of struggle, the steamboat will have a fair chance, and the river will be able to serve its purpose unhampered by the domination which has heretofore stifled competition and restricted service.

Before closing I wish to say a few words on the future of our rivers. Our work is not finished. It has only vast and far-reaching as to be almost beyond our minds to grasp. At this

beginning. Above Cello the improvement presents a problem the successful solution of which will entail results so fine I can but refer to it very briefly. From Priest Rapids on the Columbia and from Lewiston on Snake river as far west as Arlington and possibly farther, on both sides of the river, it

Diseased Meat

Is a deadly poison

RESOLVE that YOUR home will always be FREE from impure, contaminated meats and lard by resolving to

Always Buy Government Inspected Meat

WE SELL IT IN PENDLETON, AND IT COSTS NO MORE THAN THE OTHER KIND.

HAMS.

Another shipment of those eastern corn-fed, mild cured, government inspected HAMS just received. Better phone for an order.

OREGON MARKET

TWO PHONES 600 AND 601

815 Main Street.

J. S. Rogers, Prop.

begun. Above Cello the improvement presents a problem the successful solution of which will entail results so fine I can but refer to it very briefly. From Priest Rapids on the Columbia

(Continued on page five.)

I WAS USING THE REAL TOBACCO CHEW THAT'S WHAT HELPED YOU MAKE A RECORD RUN



THE GOOD JUDGE CONGRATULATES THE ENGINEER

THE taste you get from "Right-Cut" is the real tobacco substance—full and rich.

"Right-Cut" is the Real Tobacco Chew—a new blend of mellow, sappy leaf, seasoned and sweetened just enough.

One ten-cent pouch of "Right-Cut" lasts longer than twice the money will buy in the old kind.

Take a very small chew—less than one-quarter the old size. It will be more satisfying than a mouthful of ordinary tobacco. Just nibble on it until you find the strength chew that suits you. Tuck it away. Then let it rest. See how easily and evenly the real tobacco taste comes, how it satisfies without grinding, how much less you have to spit, how few chews you take to be tobacco satisfied. That's why it is the Real Tobacco Chew. That's why it costs less in the end.

It is a ready chew, cut fine and short shred so that you won't have to grind on it with your teeth. Grinding so ordinary sandal tobacco makes you spit too much.

The taste of pure, rich tobacco does not need to be covered up with molasses and florice. Notice how the salt brings out the rich tobacco taste in "Right-Cut."

One small chew takes the place of two big chews of the old kind.

WEYMAN-BRUTON COMPANY
50 Union Square, New York

BUY FROM DEALER OR SEND 10¢ STAMPS TO US

GOLDEN RULE CAFE OPEN

MEALS 25c AND UP.

Meal tickets, good for 21 meals, \$5.00.

Under new management. 225 EAST COURT STREET. That patronage of the public cordially solicited.

SICK SKINS MADE WELL BY RESINOL

No matter how long you have been tortured and disfigured by itching, burning, raw or scaly skin humors, just put a little of that soothing, antiseptic Resinol Ointment on the sores. The suffering usually stops right there! Healing begins that very minute, and in almost every case your skin gets well so quickly you feel ashamed of the money you threw away on tedious, useless treatments.
Resinol Ointment is not an experiment. It is a doctor's prescription which proved so wonderfully successful for skin troubles that it has been used by other doctors all over the country for twenty years. No other treatment for the skin now before the public can show such a record of professional approval. Every druggist sells Resinol Ointment (50c. and \$1.00), and Resinol Soap (25c.). They do wonders for pimples, blackheads, dandruff and chafings, and are a comfort to skin-tortured babies.

Boost For Your Candidate in \$1000 Prize Contest At The Cosy Theatre

NOTICE—All those that were nominated and did not get here in time to register their candidacy

IT IS NOT TOO LATE

Phone 625 at once or call up Miss Zimmerman at the Tribune office.