

Zoe Barnett and Her Manly Chorus in John C. Fisher's Production, "The Red Rose" Oregon Theatre, April 6th FEW FOLKS HAVE

GRAY HAIR NOW

DRUGGET SAYS LADIES ARE USING RECIPE OF GRAY TEA AND S'PHUR.

Hair that loses its color and lustre when it fades, turns gray, dull and lifeless, is caused by a lack of sulphur in the hair. Our grandmother made up a mixture of Sage Tea and Sulphur to keep her locks dark and wondrous, and thousands of women and men who value that even color, that beautiful dark shade of hair which is so attractive, use only this old time recipe.

Nowadays we get this famous mixture by asking at any drug store for a 50-cent bottle of "Wyeth's Sage and Sulphur Compound," which darkens the hair so naturally, so evenly, that nobody can possibly tell it has been applied. Besides, it takes off dandruff, stops scalp itching and falling hair. You just dampen a sponge or soft brush with it and draw this through your hair, taking one small strand at a time. By morning the gray hair disappears; but what delights the ladies with Wyeth's Sage and Sulphur is that, besides beautifully darkening the hair after a few applications, it also brings back the gloss and lustre and gives it an appearance of abundance.

BIG EATERS GET KIDNEY TROUBLE

TAKE SALTS AT FIRST SIGN OF BLADDER IRRITATION OR BACKACHE.

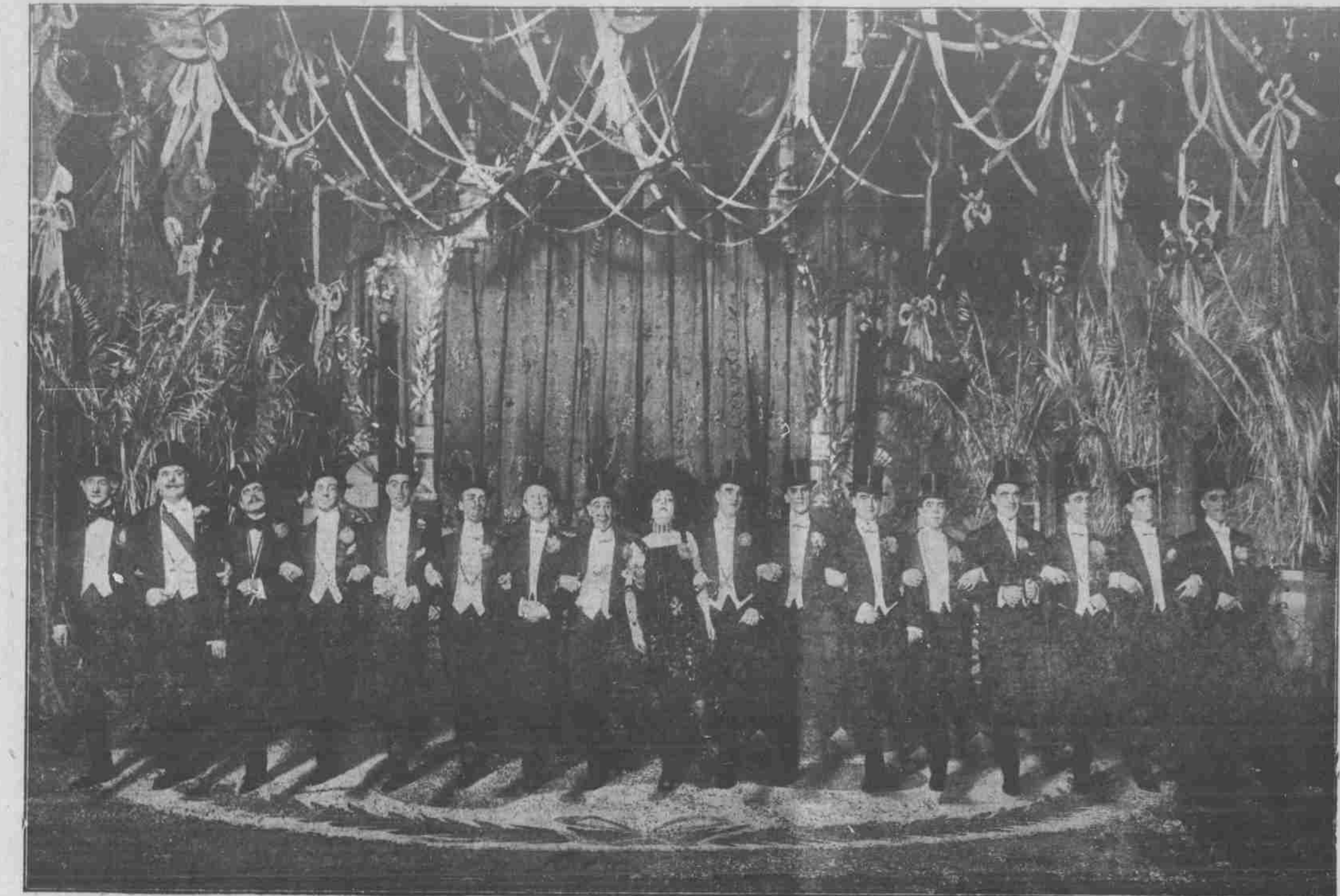
The American men and women must guard constantly against kidney trouble, because we eat too much and all our food is rich. Our blood is filled with uric acid which the kidneys strive to filter out, they weaken from overwork, become sluggish, the eliminative function clog and the result is kidney trouble, bladder weakness and a general decline in health.

When your kidneys feel like lumps of lead; your back hurts or the urine is cloudy, full of sediment or you are obliged to seek relief two or three times during the night; if you suffer with sick headache or dizzy, nervous spells, acid stomach, or you have rheumatism when the weather is bad, get from your pharmacist about four ounces of Jad Salts; take a tablespoonful in a glass of water before breakfast for a few days and your kidneys will then act fine. This famous salt is made from the acid of grapes and lemon juice, combined with lithia, and has been used for generations to flush and stimulate clogged kidneys; to neutralize the acids in the urine so it no longer is a source of irritation, thus ending bladder disorders.

Jad Salts is inexpensive; cannot injure, makes a delightful effervescent lithia-water beverage, and belongs in every home, because nobody can make a mistake by having a good kidney flushing any time.

SEE COPELAND FOR GOOD BOARD
BY DAY OR WEEK
American Plan Prices Right
777 THOMPSON ST.

CHICHESTER'S PILLS
THE DIAMOND BRAND
Ladies' Remedy
Take no other pills of any kind.
SOLD BY DRUGGISTS EVERYWHERE



MAY PROVE FATAL.

When Will Pendleton People Learn the Importance of It?

Backache is only a simple thing at first;

But if you find 'tis from the kidneys;

That serious kidney troubles may follow;

That dropsy or Bright's disease may be the fatal end,

You will be glad to know the following experience,

'Tis the statement of a Pendleton citizen.

Mrs. George W. Badgett, Box 529, Pendleton, says: "One of my family had spells of backache and at times was laid up for a month. Straightening up quickly after bending caused severe twinges in the small of the back. The kidneys were out of order. Doan's Kidney Pills were recommended by a physician and they have never failed to relieve these ailments. I have also used Doan's Kidney Pills myself and recommend them as a good kidney medicine."

Price 50c, at all dealers. Don't simply ask for a kidney remedy—get Doan's Kidney Pills—the name that Mrs. Badgett recommends. Foster-Milburn Co., Props., Buffalo, N. Y.

TRADE QUIET IN LIVESTOCK

(Courtesy Wednesday's Journal.)
PORTLAND, Ore.—There was little stuff being offered on the local market today and no general changes were noted in either conditions or values.

Top hogs are generally shown around \$7.40 with only a handful of stuff available for the trade this morning.

General hog market range:
Best light \$ 7.45
Medium light 7.35 @ 7.40
Good and heavy 7.00 @ 7.25
Rough and heavy 6.50 @ 7.00
Stockers 6.50 @ 6.75

Cattle Market Weak.
While the run of cattle on the local market today was comparatively limited, there was a slow demand shown and values were even weaker than at the start of the week.

It takes exceptional quality to bring \$7.20 @ 7.25 in the steer division at this time.

General cattle market range:
Select pulp fed steers \$7.60 @ 7.75
Best hay fed steers 7.20 @ 7.25
Good to choice 7.00 @ 7.15
Ordinary to fair 6.50 @ 6.75
Best cows 6.00 @ 6.25
Good to prime 5.75 @ 6.00
Ordinary 4.00 @ 5.50
Select calves 7.50 @ 8.00
Fancy bulls 5.50 @ 6.00

Ordinary 4.00 @ 5.00

Mutton Comes on Contract.

With practically the only supplies of mutton available at this time coming on contract to local killers, there is not much doing in the trade. General mutton and lamb market conditions are very strong with full values maintained for quality.

General mutton trade range:
Old wethers 7.75
Best yearlings 7.55 @ 8.00
Best ewes 6.75 @ 7.00
Best east mountain lambs 8.25
Valley light lambs 8.50 @ 8.75
Heavy light lambs 8.00 @ 8.25
Spring lambs 12.50

Livestock Shippers.
Cattle—Fred Collet, Albany, 1 load; George Dixon, Terrebonne, 3 loads.
Sheep—Frank Wann Canby, 1 load.
Mixed Stuff—Will Block, Independence, 1 load cattle and hogs on contract; M. Jacobsen, Molalla, 1 load cattle, calves and sheep.

TURKISH CONSUL WHO LED ATTACK ON AMERICANS.



Mehmed Raghib Bey.

Mehmed Raghib Bey, Turkish Consul at Urumiah, in the most eastern theater of the war, where Turks and Russians are struggling, led an attack on Americans at that place. He was at the head of seventy Askaris who sacked the American mission about which 15,000 Christians had taken refuge. The Consul ordered three priests and two deacons to leave the mission and as they were passing through the streets they were insulted and mercilessly beaten.

In the courtyard of the orthodox mission a gibbet was erected.

An American missionary, Mr. Allen, who was also subjected to insults and blows, succeeded in sending to Selmas two messengers to ask for prompt assistance from the Russian troops to save the lives of the Christians, whom the mission was not able to protect.

AUSTRALIA IS WHEAT BIDDER

(Wednesday's Market.)

PORTLAND, Ore.—Australian interests are again nibbling for supplies of wheat here. It is stated that while no additional business has been confirmed, the colonies are bidding somewhat better prices than formerly and today there is only a very slight difference between buyers and sellers' ideas.

M. H. Houser was reported to have taken another vessel, the Christian Brook, to carry grain. It is currently reported that while the ship was taken for the United Kingdom, still the charterer has the option of sending the vessel to Australia.

Somewhat better activity is showing for oats in the home territory, although no additional outside business is reported.

Barley market continues inactive in the interior.

Clover seed—Buying price: Nominal No. 1, uncleaned, 11 1/2 @ 12c; ordinary, 11c; alsike, 11c pound.

Flour—Selling price: Patent \$7; Willamette valley, \$7; local straight, \$6.50; bakers', \$7.00 @ 7.25.

Hay—New crop, buying price: Willamette valley timothy, fancy, \$12.50 @ 13; eastern Oregon-Idaho fancy timothy, \$15; alfalfa, \$13.00 @ 13.50; vetch and oats, \$11; clover, \$8 @ 9 per ton.

Grain sacks—1915 nominal, No. 1 Calcutta, \$6.
Milstuffs—Selling price: Bran, \$26.50; shorts, \$25.50.
Rolled barley—Selling price, \$30 @ 21 per ton.

Corn—Whole, \$25.50; cracked, \$35.50 per ton.
Wheat market was under pressure again on the Portland Merchants' Exchange for the day with bids generally lower with the exception of red tide, which was stronger and a cent better.

Sales of wheat included: 5000 bushels May club at \$1.27 1/2-2, 5000 bushels April red life at \$1.23 1/2-2.

A Cure for Sour Stomach.

Mrs. Wm. M. Thompson of Battle Creek, Mich., writes: "I have been troubled with indigestion, sour stomach and bad breath. After taking two bottles of Chamberlain's Tablets I am well. These tablets are splendid—none better." For sale by all dealers.—Adv.

Wilsonville Home Burned.
WILSONVILLE, Ore., March 31.—In spite of efforts of a "bucket brigade" formed by neighbors, the home here of David Morrison was burned.

Neighbors managed to save most of the contents of the library and some of the household furniture. The loss is estimated at \$2500. The fire was caused by a defective flue.

WHEAT CLOSES WITH A LOSS

(Wednesday's Market.)

CHICAGO, Ill.—Wheat closed 1-4 @ 1 1/2-2c lower. Opening prices were higher today. May wheat started at \$1.33 1/2-3 a bushel. July wheat opened at \$1.23 1/2-2. The strength, however, did not hold. May dropped 2c a bushel early in the trading and July declined more than a cent. September wheat was steady.

Corn was firm. July corn opened at 76 1/2-5c and May at 73 5/8-5c.

Oats were steady.

Provisions dull.

The demand for wheat was light. Bears raided the market with fair results.

In the corn trade the bearish factor was the poor demand for the cash article. Buying of May corn at 72c was of a fair volume. The Liverpool market was higher. Export business was reported as light.

WHEAT.

May—Open, \$1.53 1/2-2; high, \$1.54

1-2; low, \$1.51 1/2-2; close, \$1.51 3/4-4.

July—Open, \$1.23 1/2-2; high, \$1.23

3/4; low, \$1.21 3/8-8; close, \$1.21 1/2-2B.

Sept—Open, \$1.14 1/4-4; high, \$1.11

3/8; low, \$1.09 7/8-8; close, \$1.09 7/8-8B.

"Stomach Trouble Cured."

Mrs. H. G. Cleveland, Arnold, Pa., writes: "For some time I suffered from stomach trouble. I would have sour stomach and feel bloated after eating. Nothing benefited me until I got Chamberlain's Tablets. After taking two bottles of them I was cured." For sale by all dealers.—Adv.

Prunes in Bloom Early

VANCOUVER, Wash., March 29.—A record has been established this year for the early blossoming of prune trees. Orchards in Fruit Valley are practically in full bloom. Other orchards a little higher elevation, are ready to bloom. The record kept by A. A. Quarnberg for the past 23 years shows that the earliest record heretofore was April 1.

It is also shown by Mr. Quarnberg's records that when the prune tree bloom so early they have put one chance in six in making a full crop.

CLASSIFIED DIRECTORY

FUNERAL DIRECTORS

JOHN S. BAKER, FUNERAL DIRECTOR and licensed embalmer. Opposite postoffice. Funeral parlors, two funeral cars. Calls responded to day or night. Phone 75.

J. T. BROWN'S FURNITURE STORE
Funeral director and licensed embalmer. Most modern funeral parlors, morgue and funeral cars. Calls responded to day or night. Corner Main and Water streets. Telephone 63.

INSURANCE AND LAND BUSINESS

HARTMAN ABSTRACT CO., MAKES reliable abstracts of title to all lands in Umatilla county. Loans on city and farm property. Buys and sells all kinds of real estate. Does a general brokerage business. Pays taxes and makes investments for non-residents. Writes fire, life and accident insurance. References, any bank in Pendleton.

JAMES JOHNS, Pres.
C. H. MARSH, Sec.

BENTLEY & LEFFINGWELL, REAL

estate, fire, life and accident insurance agents. 115 Main street. Phone 404.

MISCELLANEOUS.

LEGAL BLANKS OF EVERY DESCRIPTION for county court, circuit court, justice court, real estate, etc., for sale at East Oregonian office.

ENGRAVED CARDS, INVITATIONS wedding announcements, embossed private and business stationery, etc. Very latest styles. Call at East Oregonian office and see sample.

AUCTION SALES—THE EAST OREGONIAN makes a specialty of auction sale bills, cards and advertising. We can furnish auctioneer, clerk and advertising complete that will assure you of having a successful sale.

ATTORNEYS.

RALEY & RALEY, ATTORNEYS-AT-LAW. Office in American National Bank Building.

FEE & FEE, ATTORNEYS AT LAW.

Office in Despain building.

CARTER & SMYTHE, ATTORNEYS

at law. Office in rear of American National Bank Building.

JAMES B. PERRY, ATTORNEY AT

law. Office over Taylor Hardware Company.

PETERSON & BISHOU, ATTOR-

neys at law; rooms 3 and 4, Smith-Crawford building.

DOUGLAS W. BAILEY, ATTORNEY

at law. Will practice in all state and federal courts. Rooms 1, 2, 3 and 4, over Taylor Hardware Co.

GEORGE W. COURTS, ATTORNEY

at law. Estates settled, wills, deeds, mortgages and contracts drawn. Collections made. Room 17, Schmidt block.

FREDERICK STEINER, ATTORNEY

at law. Office in Smith-Crawford building.

S. A. LOWELL, ATTORNEY AND

counselor at law. Office in Despain building.

PHYSICIANS.

H. S. GARFIELD, M. D., HOMEOPATHIC physician and surgeon. Office Judd Block. Telephone: Office, 241W; residence, 215J.

DRS. WHITAKER & WOOD, DENT-

ists. Office hours 9 a. m. to 5 p. m. Milarkey Building, Pendleton, Oregon.

VETERINARY SURGEONS.

C. W. LASSEN, M. D., V. COUNTY Veterinarian. Residence telephone, 27; office telephone, 20.

SECOND-HAND DEALERS.

V. STROBLE, DEALER IN NEW and second-hand goods. Cash paid for all second-hand goods bought. Cheapest place in Pendleton to buy household goods. Come and get our prices. 219 E. Court street. Phone 271W.

AUCTIONEERS.

COL. W. F. TOHNS, AUCTIONEER makes a specialty of farmers' stock and machinery sales. "The man that gets you the money." Leave orders at East Oregonian office.

MISCELLANEOUS.

TRESPASS NOTICES, STALLION SEASON CARDS and SALE BILLS of every description printed at reasonable prices at the East Oregonian. We have a fine lot of stock cuts that our patrons are allowed the free use of.

WANTED—PARTY WILL PAY CASH or give trade for Umatilla county farm, \$20 to \$50 per acre. Address Box 13, Athens, Ore.

BEAVER ENGRAVING

COMPANY
PORTLAND OREGON

"We work for the Beaver Engraving Co."

For work of the Beaver Engraving Co.

For work of the Beaver Engraving Co.

For work of the Beaver Engraving Co.

For work of the Beaver Engraving Co.

For work of the Beaver Engraving Co.

For work of the Beaver Engraving Co.

For work of the Beaver Engraving Co.

For work of the Beaver Engraving Co.

For work of the Beaver Engraving Co.

For work of the Beaver Engraving Co.

For work of the Beaver Engraving Co.

For work of the Beaver Engraving Co.

For work of the Beaver Engraving Co.

For work of the Beaver Engraving Co.

For work of the Beaver Engraving Co.

For work of the Beaver Engraving Co.

For work of the Beaver Engraving Co.

For work of the Beaver Engraving Co.

BURN

Coke and Coal

MIXED:—2 parts of Coke to 1 part of Coal will give you the same results in your coal stove as though you burned all Hard Coal. Think of the great saving effected by the use of Coke.

Pacific Power & Light Co.
"Always at Your Service"
Phone 40