



# BUY FURS NOW!

## Get Them at *Sayres*

THE Fur department has been one of our busiest departments the past week and we have received today by express another shipment of

### Wm. Jackman's Sons FINE FURS

Come in and make your selection early while the assortment is complete

# "Sayres"

Always Pleased to Show You

#### GERMAN GUN BURSTS, KILLING THE GUNNERS

MADRID, Nov. 21.—The newspaper Pueblo Vasco, of Bilbao, says that another German 42-centimeter mortar has burst, killing a number of the gunners. The Germans, according to the newspaper, are carefully concealing the new catastrophe.

#### AUSTRIANS DRAG MEN OF OLD LEVIES TO ARMY

VENICE, (via Paris), Nov. 21.—The new levy from the landstrum of the years 1870 to 1890 was begun in Vienna Monday and will continue daily until the list is exhausted. Four commissions are sitting and about 3,200 men are passed daily for entrance to the army.



### Toric Lenses

are the best

We grind and fit them to give the wearer comfort and satisfaction.

ALL WORK GUARANTEED.

#### Dale Rothwell

Refracting and Manufacturing Optician.

with Hancock, THE Jeweler

P. O. Bldg. Pendleton, Ore. Phone 329 J.

## OUR CASH PRICES

### SAVE YOU 20%

- MINCED CLAM — EXTRA SPECIAL—Fancy grade, new pack, 2 cans for .25c
- NORWEGIAN SARDINES—Packed in olive oil, regular 2 for 25c, now selling, tin. 10c
- UNDERWOOD'S MUSTARD SARDINES — Large size. "Underwoods" nut sed. ea. 20c
- FRESH LIMBERGER — One lb. bricks just received, the pound .30c
- GERMAN BREAKFAST and NEUFCHATEL CHEESE—3 cakes .25c
- TOMATO KETCHUP—In bulk from No. 1 Selected Tomatoes, pint .15c
- PEANUT BUTTER—New stock, extra rich in oil and flavor, pound .20c
- NEW DILLS—Large, clean, solid pickles, doz. .20c

- ASSORTED SWEET CAKES—In packages, all varieties, also CHOCOLATE ECLAIRS, PANAMA CREAMS and FIG SULTANAS, in bulk.
- TRY our new SPECIAL CHEESE WAFERS.
- HOOD RIVER APPLE CIDER—Real old fashioned apple cider, quart .15c
- SPECIAL—SPITZENBERG and DELAWARE RED APPLES, loose pack, good size, extra good cookers, the box .75c
- FANCY HOOD RIVER EATING APPLES, paper wrapped, graded and solid packed, the box .1.25
- KRAUT, the seasons best, quart .10c
- CALIFORNIA GRAPES, the basket .80c
- In bulk, 2 pounds .25c

OPEN UNTIL TEN TONIGHT

## THE SPECIALTY CASH GROCERY

Phone 478. 628 Main St.

"One Light Delivery After Six."



(Continued from page two.)

Miss F. Smidell, a sister of Mrs. Fred Bloch, and Mrs. L. H. Dockstader of Portland arrived this morning to be guests of Mrs. Bloch at the Hotel Pendleton.

Mrs. H. J. Markham and Mrs. A. M. Markham of Chicago are here to close up the estate of the late Frank Markham of Pilot Rock.

Magnolia Lodge No. 34, Degree of Honor, enjoyed a social session Thursday evening in L. O. F. hall and it was attended by eighty members and their husbands. A program of musical numbers and recitations was rendered and at its conclusion a banquet was served. The affair marked the end of a membership campaign in which many new members were secured. Miss Williamson, captain No. 3, and her team were guests of honor, having won the contest, and Mrs. Farley and Mrs. Beagle, the other two captains, presided over the affair.

## LOCALS

### Advertising in Brief

RATES.  
Per line first insertion . . . . .10c  
Per line, additional insertion . . . . .5c  
Per line, per month . . . . . \$1.00  
No local taken for less than 25c.  
Count 5 ordinary words to line.  
Locals will not be taken over the phone and remittance must accompany order.

- Whipple—Piano tuner, phone 226 R. Phone L. C. Snyder, chimney sweep.
- Umbrellas repaired, recovered, Pendleton Cycle Co.
- Wanted—Girl for general housework. Phone 316.
- Get your "Rufnek" sweater from the Peoples Warehouse, \$2.00 to \$7. Good winter quarters for horses and rigs at the Alta barn.
- Wanted—Good, clean rags at the East Oregonian office.
- Fashionable dressmaking at 613 W. Court. Phone 251 J.
- Competent woman wants day work. 115 Grange street.
- For rent—Furnished 5 roomed modern house. Phone 554.
- To rent—Nicely furnished 3-room apartment. 502 Water.
- For sale—Three good lots or trade for automobile. Phone 218 J.
- Girl wants work in private family or out of town. Inquire "L" this office.
- Wanted—Competent girl for general housework. Phone 118 or Apply 224 So. Main.
- The Alta House, a good, popular, yet cheap place to stop. J. M. Stephenson, prop.
- Five room house for sale on north side. Corner lot improved. Address "W" this office.
- Wanted—Girl to do general housework. Inquire 414 Jackson. Must have references.
- Wanted—Position as working housekeeper, private family. Inquire "C" this office.
- Lost—Silver watch marked H. C. J. gold fob attached. Finder return to this office and receive reward.
- Good dry, black pine wood, \$5.50 per cord, \$6.00 if sawed. Delivered. See B. B. Gervais or phone 778.
- Do you know that the Peoples Warehouse received yesterday a large shipment of fancy ribbons of all kinds, and they are to sell at 25c yd?
- Old papers for sale; tied in bundles. Good for starting fires, etc., 15c a bundle or two bundles for 25c. This office.
- Wanted, Boarders—\$5.00 per week, including room and bath \$6.00 per week. 502 Water street or phone 202 M.
- Try the West End Market for groceries and meats, 1301 W. Alta ct. Phone 178. Free delivery. Satisfaction guaranteed.
- For sale—Alfalfa hay, first, second and third cuttings, on the old Hudson Bay Meadows. Mrs. N. E. Rice, Lowden, Wash.
- For sale—Two modern cottages located on east Court street, seven blocks from Main street. Inquire of Walters' mill.
- For sale—Modern seven room house and seven lots, with barn, close to school. \$2500 takes it. Inquire or address "A" this office.
- Agents—Sell guaranteed hosiery; 70 per cent profit; make \$10 daily. Orders repeat regularly; best agent's seller in existence. International Mills, West Philadelphia, Pa.
- "Mutt" takes the big loads and "Jeff" shows the speed. Penland Bros. haul anything and reasonable. Furniture van and storage warehouse. Office 647 Main street. Phone 339.
- There will be a basket social at Riverside school house on Wednesday evening, November the twenty-fifth. Also a short program. Everyone is cordially invited.
- Several small farms on Umatilla river particularly adapted to hops, dairy or poultry, \$750 cash, balance on or before 10 years. 7 1-2 per cent. See Berkeley.
- Matrimonial agency of highest character; strictly private and reliable. Best in the West. Eighth year. Why not better your position? Full information 18c. Ideal Introduction Club, Box 264, Vancouver, B. C.
- \$1275—Small payment down, big house arranged in apartments and partly furnished on 50 foot corner lot, close in. Apartments always rented. More than pays for itself besides a good place to live. Will consider a trade. Address Box 533, Pendleton.

## A Wonderful New Organization

IN the United States there are 20,000 retail jewelers. Of these at least 2,500, whether in large or small cities or towns, conduct their business on about the same plan. They are generally referred to as the "best jewelers." Their success is the result of honest representation and fair dealing.

IN January, 1914, forty-two of these jewelers met in Chicago to consider a plan for a co-operative movement that would unite the power and prestige of these 2,500 stores. They formed the United Jewelers, Inc.—incorporated under the laws of the State of New York—with an authorized capital of \$1,500,000. The stock is owned and the company controlled by retail jewelers. The list of jewelers who were invited to buy stock and become partners in this company was carefully prepared—and approved by a board of directors who are themselves retail jewelers. Each individual was approved not only for financial responsibility but for his integrity and standing as a citizen.

THE purpose of the company is to produce a general line of merchandise for every department of the retail jewelry store under a special trademark. In other words the retailer becomes his own manufacturer. Selling cost and manufacturing cost are reduced to a minimum and he has a direct supervision of quality and workmanship. The natural result is highest quality merchandise at no more cost than lower grades distributed in the ordinary way.

THE United Jewelers, Inc., have adopted as their trademark the word Hallmark and the stores of the stock-holders are known as Hallmark Stores. There is but one Hallmark Store in any city or town and Hallmark merchandise is for sale only in the stores of the stockholders. The company's main office is in New York City where competent heads study the market for new ideas and improved manufacturing facilities.

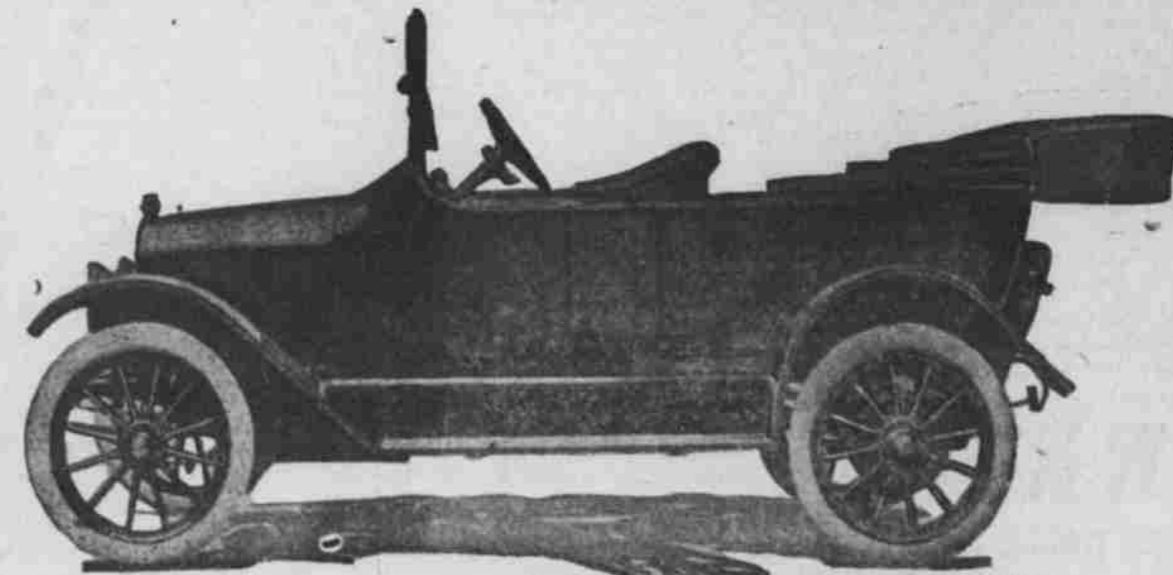
IT will not be long before there will be a Hallmark Store in every city and town in the United States. Already the leading jewelers in several hundred cities have joined this great co-operative movement. The volume of business done by the jewelers already enrolled amounts to many millions of dollars. The total sales of the 2,500 stores amount to over \$50,000,000 annually. This will give you some idea of the producing power of this company.

LOOK for the trademark HALLMARK. It stands for honor and economical service. It means the lowest cost of production possible. It means a lower price or a better quality.

Royal M. Sawtelle  
Jeweler



# HERE IT IS! THE "WONDER CAR"



## MAXWELL

### THE NEW 1915 MODEL

with 17 new Features; with Electric Lights and Electric Self Starter. **\$850**

The sensation of the automobile world. The biggest automobile value ever offered under \$1000. Powerful, fast, silent and one of the easiest riding and most economical cars in the world. A splendid, fully equipped real five-passenger family automobile. With Sims high tension magneto, sliding gear transmission, left hand drive, center control, anti-skid tires on rear and

### PRACTICALLY ALL THE HIGH PRICED FEATURES OF HIGH PRICED CARS

The easiest car in the world to drive. The greatest all around hill climbing car in the world. The car with a pure stream-line body. HOLDS THE ROAD AT 50 MILES AN HOUR. Carload of these wonderful new MAXWELLS just received by us. Note the specifications shown here. Come see the car. Ask for a demonstration.

## THE HENDERSON AGENCY

CARS ON DISPLAY AT CITY AUTO CO. 722 Cottonwood Street. L. V. HENDERSON. Telephone 46

#### COMPLETE MAXWELL SPECIFICATIONS.

- 4-cylinder, 25 h. p. motor, cone clutch, unit transmission bolted to engine; 2-4 floating rear axle; left-side steer, center control; 5-passenger body; 56-inch tread; 103-inch wheel base, 30x3 1-2-inch tires; weight 1850 lbs.
- Motor—3 5-8-inch bore, 4 1-2-inch stroke; cylinder and upper half crank case integral; detachable head with valve located on right side and completely enclosed; valves 1 9-16-inch diameter.
- Cam-Shaft—Drop forged with integral cams.
- Cooling—Tubular radiator; thermosiphon system with large inlet and outlet connections. Spring tension fan.
- Lubrication—Splash system with positive oil pump, delivering oil at front end of engine and drawing at rear. Oil well integral with lower half of crank case.
- Carburetor—Kingston atomizer type; hot and cold air supply controlled from dash to suit stating or running in any climate. Gasoline is supplied by gravity.
- Gasoline Tank—Located under dash cowl, making short and absolute feed to carburetor. Positive feeding qualities, even on steepest grades. No pressure system necessary.
- Clutch—Cone clutch; lined with raybestos lining; cone is made from steel stamping and provides its own spring action, to insure perfect contact; positively coupled to transmission through 6-spline shaft.
- Wheel Base—103 inches.
- Tread—56 inches; 60 inches, optional for South.
- Rear Axle—3-4 floating; 2 3-16 inch tubes with truss rod; 1 1-8 inch nickel steel axle shaft. Bevel driving pinion, 12 teeth 5 pitch; driving gear, 43 teeth 5 pitch; gear ratio, 3.58 to 1.
- Front Axle—Drop forged I-beam section, extra long wheel hub, running on ball bearings.
- Springs—Front—Semi-elliptic, 32 in. long, 1 3-4 inches wide, fixed at front, shackled at rear.
- Springs—Rear—3-4 elliptic; lower half 40 inches long, scroll 16 inches long from center of spring shackles to spring seat; 1 3-4 inches wide, fixed at front to transmit drive. Shackled at rear and mounted on a rocking seat.
- Wheels—Spokes, 1 1-4 inch thick, oval section. 12 spokes in both front and rear wheels. Equipped with clincher rims.
- Tires—30x3 1-2 inches, all around.
- Bodies—Streamline 5 passenger touring car, 2 passenger roadster, 2 passenger cabriolet and 8 passenger town car bodies are furnished. Each perfectly finished and upholstered.
- Front Seat—Of touring car is adjustable 3 inches either forward or backward.
- Equipment—2 electric head lights, 9 1-2 inches in diameter electric horn, mohair top with envelope, clear-vision and ventilating windshield, speedometer, spare tire carrier, pump, jack, special wrenches and tools.
- Starting System—Gray & Davis' electric individual motor.
- Lighting System—Electric generator, all electric lights.