

The HUDSON Six-40 won it's Leadership Because It Gives People Exactly What They Want

HUDSON 1915

The Last Word in Motor Car Building. The "Most Car" ever offered you for your money. COME AND SEE THEM.

HUDSON EQUIPMENT

The Six-40 is electric self-cranking and electric lighted with integral ignition, supplied by Delco patented system specially designed for the HUDSON Six-40 car. Lights and self cranking system operated from driver's seat.

Eleven-inch electric parabolic headlights with special dimming attachment, by which power of lights can be regulated as desired. No side lamps. Tail light and dash lamp in series.

Motor-driven electric horn with push button.

Top of the "One-Man" type with quick adjustable curtains and dust envelope. When top is up front bow attaches directly to top of windshield.

Interval windshield, rain-vision and ventilating.

Speedometer sunk in cowl-apron, driven from transmission shaft.

Gasoline level indicator mounted on dash.

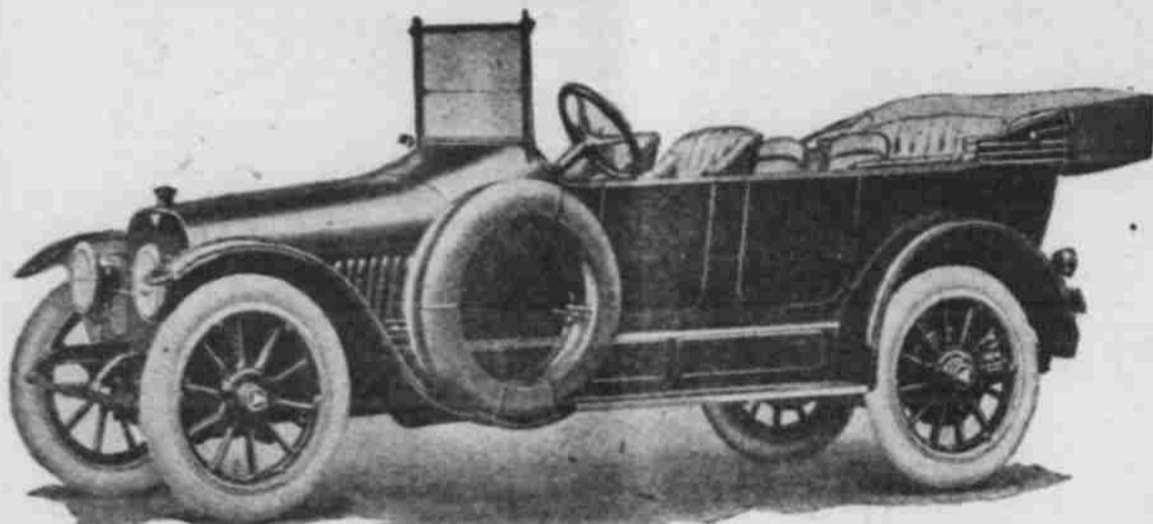
Demountable rims with extra rim, extra tire casing, inner tube and tire cover.

Tire holders. Trunk rack. Set of wood chairs.

Complete set of tools in canvas carrying case. Tool kit complete with hammer, special wrenches, pliers, files, punches, etc. special jack and pump are included.

Permanently attached extra folding seats in tonneau of Phaeton model adapted to instantly convert car from four-seated to six-seated. Seats fold against back of front seat, completely out of the way, yet are immediately available when required.

CARS NOW HERE



The HUDSON Six-40

\$1750

F. O. B. PENDLETON

Cars are now on display in our garage and we are always pleased to demonstrate them to prospective buyers.

Our Garage Service Unexcelled

Cars taken for storage, and in addition we maintain an up-to-date trouble department, affording our patrons expert attention with the least possible waits.

Essentials of the 1915 Motor-Car. The HUDSON Six-40 Has All These Desirable Features.

The car that possesses these important points is the one selected by experienced and discriminating buyers. Read them carefully.

Six Cylinders—Vibrationless, powerful, flexible, economical. The most modern type of automobile. Has latest type, light, compact one-block motor, small bore and long stroke.

Streamline Body Design—Flush sides, concealed hinges, no angles at dash, lessened air pressure to overcome. Every important automobile designer in the world uses the streamline body.

Low-Hung Chassis—Moderately long wheel base, 123 inches. Deep-section, pressed steel frame, light, rigid, strong.

Light Weight—(2,990 pounds.) Obtained by skillful engineering and judicious selection of materials combining lightness and strength. For example, the crank case and transmission case in the HUDSON Six are of aluminum. In some cars they are made of cast iron. Aluminum is

very much lighter, stronger, less subject to fracture, superior in every way. Aluminum costs about 40¢ per lb., cast iron costs 3¢ to 4¢. Light weight means low running expense of both fuel and tires.

Exactness of Balance—Proper distribution of weight of gasoline tank, spare tires, and other parts and accessories insure easy riding, freedom from dangerous skidding, equal wear on tires. The Six-40 has made a wonderful reputation in this respect.

Improved Top and Curtains—"One-Man" top with curtains folded in place, ready for quick use. All fastening operated from inside.

New Style Windshield—Rigid side standards, upper sash ad-

justable to any angle, fitted with friction control, no screws or clamps.

Fuel Tank in Dash—Gasoline gravity feed tank carried in dash. No air pump or pressure gauge. Positive feed, conveniently filled, weight properly placed. Safest position for tank.

Left-Side Drive, Center Control—Steering wheel on left, control levers in center, at right. All gauges, light switches and other accessories on dash-apron convenient to hand and eye. Horn button in center of steering wheel. Driver's section entered from either side.

Auxiliary Seats—In tonneau. Permanently attached, folded against back of front seat, provide instant accommodation for two extra passengers.

Electric Starting and Lighting—Hudson-Delco system, no gauges or other devices to annoy; automatic, efficient and "trouble-proof." Headlights have dimming feature. No side lights.

Spare Tires on Side—Carried ahead of front door. Relieves rear of car of objectionable weight, quickly accessible.

Speedometer Drive Off Transmission Shaft—Avoids well-known disadvantages of front-wheel drive. The improved drive from main shaft is now perfected in the HUDSON Six-40.

Demountable Rims, Trunk Rack, Protected Wiring, Individual Safety Lock, Automatic Spark Advance, Tubular Drive Shaft—and other details—all are demanded by well-posted buyers, and all are furnished in the 1915 HUDSON.

CITY AUTO COMPANY

Telephone 46

Burns & Peterson, Proprietors

722 Cottonwood Street



AN INDEPENDENT NEWSPAPER. Published Daily and Semi-Weekly at Pendleton, Oregon, by the EAST OREGONIAN PUBLISHING CO.

Official County Paper. Member United Press Association.

Entered at the postoffice at Pendleton, Oregon, as second-class mail matter.

Telephone

ON SALE IN OTHER CITIES. Imperial Hotel News Stand, Portland, Oregon.

Bowman News Co., Portland, Oregon. Chicago Bureau, 909 Security Building, Washington, D. C., Bureau, 501, Fourteenth street, N. W.

SUBSCRIPTION RATES. Daily, one year, by mail, \$5.00. Daily, six months, by mail, \$2.50. Daily, three months, by mail, \$1.25. Daily, one month, by mail, \$0.50. Daily, one year, by carrier, \$5.00. Daily, six months, by carrier, \$2.50. Daily, three months, by carrier, \$1.25. Daily, one month, by carrier, \$0.50. Semi-Weekly, one year, by mail, \$2.50. Semi-Weekly, six months, by mail, \$1.25. Semi-Weekly, four months, by mail, \$0.90.

THINGS THAT COUNT.

- Not what we have, but what we use.
- Not what we see, but what we choose.
- These are the things that mar or bless.
- The sum of human happiness.
- The things nearby, not things afar.
- Not what we seem, but what we are.
- These are the things that make or break.
- That give the heart its joy or ache.
- Not what seems fair, but what is true.
- Not what we dream, but good we do.
- These are the things that shine like gems.
- Like stars in fortunes gladdens.
- Not as we take, but as we give.
- Not as we pray, but as we live.
- These are the things that make for peace.
- Both now and after time shall cease. —Outlook.

A century and a half has passed since the Father of his People, in his ever famous Washington's Advice fare well and Wilson's Policy. Dress, issued that solemn warning on the danger of entanglements with foreign powers, says the Christian Science Monitor of Boston. Much water has run under Concord

bridge since that day, but it has not washed out one of his arguments. The dispassionate judgment which prompted the famous declaration, "Our detachment and distant situation invites and enables us to pursue a different course" from the nations of Europe, has been amply justified, and if the rulers of the mighty republic of today remain as wise as those of the little republic of the eighteenth century, the day will come when the voice of the United States may be raised not to proclaim war but to command peace.

It would be difficult to imagine a more liberal exponent of the Washingtonian doctrine of non-interference in European politics than President Wilson. In the present supremely difficult moment, when the European belligerents are making use of the White House as a means of giving to the world their respective versions of current events, he has succeeded in maintaining an attitude of perfect courtesy to all and of supreme though by no means colorless impartiality. The temptation to express his own opinion on the events of the war must have, at times, been peculiarly strong, but the president has never for a moment succumbed to it. He has no doubt realized the fact that the good offices offered to the Japanese and Russians by Colonel Roosevelt, in 1905, may, at any moment, be offered to the belligerents in the present war. When that moment comes, if the offer is accepted, it will be because all the combatants feel that President Wilson has fulfilled the demand of the first president of the United States, in that he has proved that he has neither partiality for one nation or dislike for another.

In a letter to United States Senator George E. Chamberlain, Dr. Anna Howard Shaw, president of the National And Suffrage Association and one of the most noted women in the United States, expresses a deep distress over the course pursued by the Congressional Union of Woman Suffrage in sending Jessie Hardy Stubbs into Oregon to attack him upon the sole grounds that he is a democrat. She makes it unmistakably plain that she and the great organization she represents regard Senator Chamberlain as a friend of their cause, one who has stood for the enfranchisement of women persistently and consistently for many years. She brands the action of the union

as self-destructive. "This form of suffrage activity, based upon the mischievous militancy of a portion of the English suffragists, can but produce the same result in this country which it has in England, and that is to delay the triumph of woman suffrage," she writes. "More than all the efforts of our opponents it will postpone our final success."

"That, however," she goes on to say in her letter, "is not primarily the cause of our present distress. We feel deeply the injustice of their ingratitude when we recall what you and other democrats have done for our cause; how you championed it when you had everything to lose and nothing to gain by your support."

Under the heading "Ten Year Campaign Gives Pendleton Model Schools," the Christian Science Monitor, published in Boston, printed a splendid article in a recent edition describing the advancement made in the schools of this city during the past decade. It is illustrated with a picture of the new high school. A ten year campaign has also given Pendleton a pure and abundant water supply.

as much as the Boston author and Round-up booster has visited nearly every section of the globe, the name is not inappropriate.

"Ninety per cent of the loggers and sawmill workers in Lane county will vote for George E. Chamberlain because they believe that Booth has always been unfair to organized labor" writes a prominent resident of Eugene. These loggers and sawmill workers are Booth's own people and they ought to know him best.

RED CROSS NURSES

What the Women Are Doing. The women of the Red Cross are nursing, cheering and comforting the wounded or dying. The women of Europe not only wrap bandages and scrape lint, but they tend the farms, dig coal, carry burdens and do the work of the men now under arms. Every male fighter, however brawny and heroic, was born of woman; the high courage and hardihood that are a nation's strength are inherited from the mother. Young mothers who preserve the charms of face and figure in spite of an increasing family and the care of growing children are always to be envied. Dr. Pierce's Favorite Prescription gives the strength and health upon which happy motherhood depends. It practically does away with the pains of maternity. It enables the mother to nourish the infant life depending on her, and enjoy the hourly happiness of watching the development of a perfectly healthy child. Thousands of women who are now blessed with robust health cannot understand why thousands of other women continue to worry and suffer from ailments peculiar to women when they can obtain for a trifling sum Dr. Pierce's Favorite Prescription, which will surely and quickly banish all pain, distress and misery and restore the womanly functions to perfect health.

IMPORTANT SPECIAL OFFER TO READERS OF THIS PAPER. Any person desiring a copy of The People's Common Sense Medical Adviser before the edition is exhausted should send this notice together with 25 cents in stamps to Dr. Pierce, Invalids' Hotel, Buffalo, N. Y., and a copy will be sent by return mail, all charges prepaid.

One lot of \$4.00, 4.50 and 5.00 Men's Shoes per pair \$3.45	Keep the Cold Out! One lot of beautiful new MACKINAW Regular price \$9.00. We are selling them at the very low price of \$6.95	One lot of \$3.00 new Fall Men's Hats your choice for \$1.45
---	---	---

IT'S GETTING COLDER WINTER'S COMING

Come in now, right at the start of the season, when the entire winter's wear is before you and get a

BEAUTIFUL NEW Suit or Overcoat For 1-4 Off

There is no reason why you should put off getting that new suit or overcoat—and getting one a little better than you contemplated—when such prices as these are quoted you on the best made clothes.

Schubert-Taylor Clothing Co.
725 Main Street