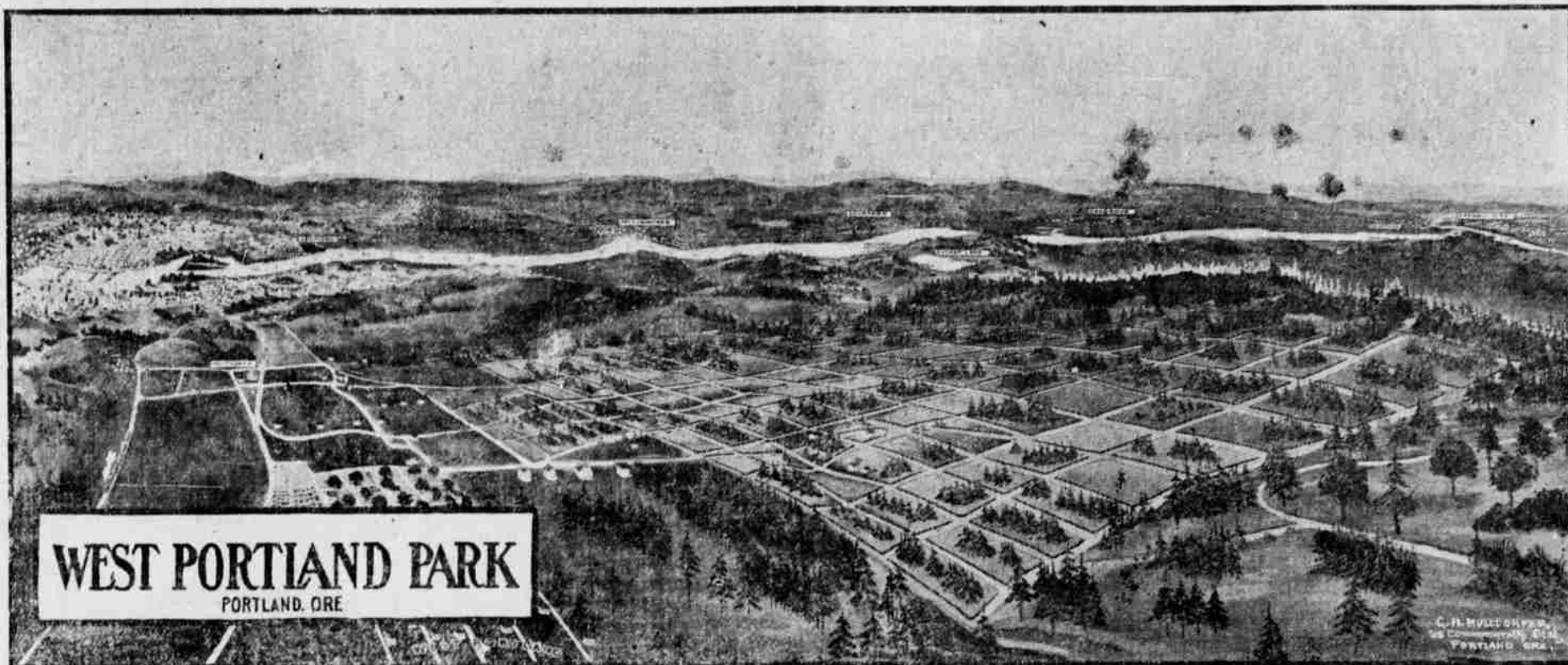


WEST PORTLAND PARK

Lots
\$60
and
\$90



Lots
\$60
and
\$90

22 MINUTES FROM BUSINESS SECTION

Commerce rules the world and has built every city that ever arose

Study Your Geography

and you will find that commerce follows the path of least resistance and has placed all cities according to topography of the country at the outlet of down hill territory.

PORTLAND lies at the outlet of a territory of 250,000 sq. miles which is all down hill to Portland. Do you realize that this area equals Illinois, Iowa, Missouri and all the New England states combined? There are acres within this vast territory which produce \$1,000 each per year. Other acres produce very little but taking all, it compares very favorably with the Miss. Valley. In the same size territory, in the Miss. Valley we have Chicago, St. Louis, Kansas City, Omaha, St. Joseph.

Today your freight rates of \$4 per ton from Pendleton to Portland and the sound cities are identical
WHY? Because of an Understanding Between Railroads.

But Listen

Wait till the Cello canal is completed and we have open river transportation. The farmers can build barges holding 100,000 sacks of wheat and drop them into Portland less than \$1 per ton.

Can You Comprehend the Meaning

Chicago in 1870 had only 306605 population; in 1880 503298; in 1890 1,105,540; in 1900 1,698,575 and by 1910 should have over 3,000,000 people. **Portland** has every facility for duplicating Chicago's record and of surpassing it because this is the **last west.**

Lots \$60 @ \$90

West Portland Park

Lots \$60 @ \$90

lies on the same side of the city of Portland as the business section and is just five miles to the southwest of this section: Property the same distance from the heart of Chicago is considered close in apartment house property and sells as high as \$50,000.

The Tunnel

under council crest will make every lot in West Portland Park worth \$500.

Will You Buy Now or Wait?

Lots \$60 to \$90. Terms \$10 Down and \$4 per month

Cook & Thompson,
Special Portland Representatives

with Mark Moorhouse Company
112 Court St.