

# ..Spring Arrivals..

## of SMART CLOTHING



### The Celebrated Stein-Bloch Make

THIS is the line of clothing that took London by storm, the first American line ever sold in England. The label stands for 54 years of knowing how, and has a world wide reputation of being the best ready-made clothing in the world.

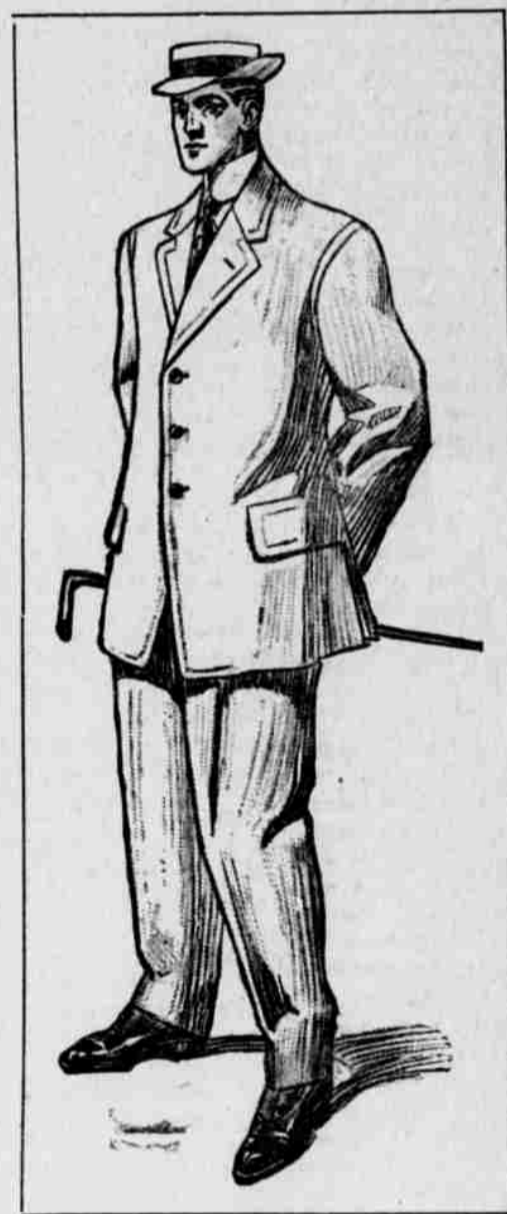
We want to show you the pretty patterns in gray, and have you try them on, it will cost you nothing.

These high-grade suits range in price from

**\$20.00 to \$27.50**

and are guaranteed to hold their shape until worn out

We also carry the



## .Sincerity Brand.

another high-grade line, and can fit you in one of these beautiful suits for **\$15, \$18.50, \$20, \$22.50 and \$25**

Thus placing an up-to-date suit of the latest design within reach of all

See Window---We Invite Your Inspection

Buy Your Easter Suit Early and Get First Choice

# ALEXANDER'S

The Progressive Store

### AVALANCHES BEGIN AS TINY SNOWSLIDES

#### ENGINEER TELLS HOW SNOWSLIDES ARE FORMED

Man Who Bored Famous Cascade Tunnel Explains Nature of Country at Wellington and Relates His Experience With Avalanches.

H. R. De Laplin, the railway engineer who bored the famous Cascade tunnel at the west approach of which two Great Northern trains were thrown to destruction Monday, told today of the four years he lived at Wellington, Wash., the town which was buried by the avalanche.

"People may scoff at the stories of trains swept over the ledge by the snow," he said, "but they are most probable. I have seen engines and rotary snow plows thrown over many times by slides. But a slide capable of carrying two trains over the cliff must have been an immense avalanche—the greatest in the history of mountain railroading.

**Wellington on Ledge.**  
Wellington rests on a narrow ledge 2900 feet above sea level. It is a few hundred feet, perhaps 300 feet, west

of the west portal of the tunnel. The bore is at the crest. The different atmosphere pressures meet above the tunnel and the heaviest snowfalls on the line of the Great Northern is registered at that point. Tests, carried on for years, show that the average snowfall is 30 feet, 8 inches at Wellington.

"The town sat on a narrow ledge about 100 feet wide, and about 300 feet long. On one side of the shelf, the mountain side rises at an angle of 40 degrees, overhanging the village. On the other side the ledge drops sheer to the canyon below for a distance of 200 feet.

"From what I can learn, the avalanche, a mile in length, started on the side of the mountain which overhung the town. It swooped down, carrying rocks, boulders and earth with it, crashing over the village and sweeping the two trains, which were standing on a side track, into the canyon. From what I read and with my knowledge of the country, I am under the impression snow which rested on the mountain side, crashed over the town.

**Town's Population.**  
Wellington is peopled by two or three gangs of section hands, a few railroad men, the station agent and operators, and a storekeeper. The Great Northern keeps a large quantity of supplies at Wellington, as trains are often stalled there by the snow. While I was building the tunnel we maintained a hospital. I do not know if a company physician is stationed

there. All told, not more than 50 persons make up the inhabitants of the village.

"My experience with snowslides were numerous. I stood near the Wellington station one bright day, trying to sight our center pole, which was planted on the top of the mountain, through a glass. While I looked chunks of snow fell from the limbs of a tree, far up the side of the mountain. The loose snow rolled and grew in size. It gained speed and gathered up a great mass. Soon it grew too large to roll, and began sliding. When it reached the track it was made up of hundreds of tons of snow, ice, rocks and earth. There it struck an engine and two large rotary snow plows, throwing them on their side.

"During the winter months—and well into the month of June the snow may often be seen—slides are daily occurrences. It is impossible to anticipate them."—Portland Journal.

**A Swollen Jaw**  
is not pretty nor pleasant. Whether it's caused by neuralgia, toothache, or accident, Ballard's Snow Liniment will reduce the swelling and relieve the pain. The great and sure cure for rheumatism, cuts, burns, bruises, scalds—any and all aches and pains. Sold by A. C. Koepfen & Bros.

**Are You a Good Shot?**  
Valuable guns and cigars given to the best shots at the Pastime Parlors. Ask Estes.

#### Call for Warrants.

All general fund warrants, registered during the months of July, August and September, 1909, will be paid at my office, at the county court house upon presentation.

Interest ceased upon date of publication.

Dated Pendleton, Oregon, February 26, 1910, Umatilla county.  
G. W. BRADLEY,  
County Treasurer.

#### Every Mother

is or should be worried when the little ones have a cough or cold. It may lead to croup or pleurisy or pneumonia—then to something more serious. Ballard's Horehound Syrup will cure the trouble at once and prevent any complication. Sold by A. C. Koepfen & Bros.

#### Ladies Soles sewed.

With my new machine I can sew your soles on for 65c per pair. They will look better and last longer.  
A. EKLUND.

#### For Sale.

Black Percheron stallion imported from France, 8 years old, weight one ton. Prices right. See E. T. Wade.

Known For Its Strength

## The First National Bank

PENDELTON, OREGON

CAPITAL, SURPLUS and UNDIVIDED PROFITS \$450,000.00

RESOURCES OVER \$2,000,000.00

SECURITY

## MOVED

THE PENDLETON FURNITURE COMPANY  
is now located in the store room formerly occupied by INGRAM'S Grocery, where we will be glad to meet all our old friends and patrons.  
W. R. GRAHAM, Manager.