

THE EXCHANGES OF THE INLAND EMPIRE

...this afternoon that an insane man was at large near Elk. In his frenzy he succeeded in destroying considerable property at the Great Northern depot at Elk.

Violating Game Law. It is reported by travelers in from the Clear Fork region that the natives lives of this vicinity have been guilty of killing deer contrary to the same laws.

One Horse; Three Years. Three years at Salem is the sentence received by William Irwin, the young man who was so foolhardy as to take one of William Kitchen's horses from a pasture and then, after several efforts to sell it to others, tender it to the owner for a ridiculously low price.

Stage Line Abandoned. C. F. Kear has given up the stage business between Sumpter and Bourne and has sent a number of his horses to the harvest fields.

Bridge Burned. Bridge No. 55 at Green Bluff was burned yesterday afternoon. County Surveyor Snow sent out a crew of men today to make the levels preparatory to the building of a new bridge.

Market Continues to Show Weakness. ...Cents Per 100 Eggs. ...Portland Market—Receipts Light—Sheep Are Dull.

Union Stockyards, July 15.—Market is showing weakness with the quotations 25c lower. This is due to the smaller demand for sheep.

CHOICE BEEF CATTLE, ETC. Steers, \$3@3.50. Cows, \$2.50@2.85. Hogs, live, 5 1/2@6.

HAY AND FEED. Chop barley, \$25 per ton; 1 1/2c per lb. Chopped wheat, 1.40 per 100.

Annual meeting Grand Lodge Benevolent and Protective Order of Elks, Cincinnati, Ohio, July 23d-28th, 1904.

Imperial Council Ancient Arabic Order Mystic Shrine, Atlantic City, N. J., July 13th-15th, 1904.

National Encampment Grand Army of the Republic, Boston, Mass., August 15th-20th, 1904.

Knights of Pythias National Encampment, Louisville, Ky., August 15th, 1904.

For the above occasions the O. R. & N. makes a rate of \$71.50 to Detroit and return. Tickets on sale July 2d. Limit 90 days from date of sale.

To Cincinnati, Ohio, and return, \$69.25. Sale date of tickets July 10th, 11th, 13th and 14th. Final limit 90 days from date of sale.

BUSINESS CARDS, SOCIETIES PROFESSIONS AND TRADES

PHYSICIANS. DR. W. G. COLE, OFFICE IN JUDD building. Office hours, 10 to 12 a. m. 1 to 5 p. m. Telephone: Office main 1371; residence, main 1381.

ATTORNEYS. BEAN & PERRY, ATTORNEYS AT LAW. Office over Taylor's Hardware store, Pendleton, Oregon.

HAILEY & LOWELL, ATTORNEYS AT LAW. Office in Despain block.

WINTER & COLLIER, LAWYERS—OFFICE, rooms 7 and 8 Association building.

COMMERCIAL STABLES, G. M. FROOME proprietor. Fine horses, good rigs, best care given transient stock.

VETERINARY SURGEONS. VETERINARY SURGEON—DR. D. C. McNabb. Office at Tallman's drug store.

DENTISTS. DR. M. S. KERN, DENTAL SURGEON. Office, room 15, Judd building.

BANKS AND BROKERS. FIRST NATIONAL BANK OF ATHENA, Oregon. Capital, \$50,000; surplus and profits, \$12,500.00.

THE FARMERS' BANK OF WESTON, Oregon. Exchange bought and sold. Collections promptly attended to.

THE PENDLETON SAVINGS BANK, Pendleton, Oregon. Organized March 1, 1889. Capital, \$100,000; surplus, \$75,000.

FIRST NATIONAL BANK OF PENDLETON, Oregon. Capital, \$70,000; surplus and undivided profits, \$125,000.

FRATERNAL ORDERS. B. P. O. ELKS, PENDLETON LODGE No. 288. Regular meetings first and third Thursdays of each month.

ARCHITECTS AND BUILDERS. C. E. TROUTMAN, ARCHITECT AND Superintendent, room 12 Judd block, Pendleton, Oregon.

INSURANCE AND LAND BUSINESS. HARTMAN ABSTRACT CO. MAKES reliable abstracts of title to all lands in Umatilla county.

THE STANFIELD HOUSE, 313 SOUTH Main street, Mrs. L. Michael, prop. Large, clean, comfortable rooms.

HOTEL ALTA, CORNER ALTA AND Mill streets. Board by the day or week. Good table set. Rates, \$3.75 and \$4.75 per week.

ATHENA HOTEL, LEADING HOTEL IN the city, \$1.00 to \$1.50 per day. H. P. Miller, proprietor.

THE STANFIELD HOUSE, 313 SOUTH Main street, Mrs. L. Michael, prop. Large, clean, comfortable rooms.

THE STANFIELD HOUSE, 313 SOUTH Main street, Mrs. L. Michael, prop. Large, clean, comfortable rooms.

THE STANFIELD HOUSE, 313 SOUTH Main street, Mrs. L. Michael, prop. Large, clean, comfortable rooms.

THE STANFIELD HOUSE, 313 SOUTH Main street, Mrs. L. Michael, prop. Large, clean, comfortable rooms.

THE STANFIELD HOUSE, 313 SOUTH Main street, Mrs. L. Michael, prop. Large, clean, comfortable rooms.

THE STANFIELD HOUSE, 313 SOUTH Main street, Mrs. L. Michael, prop. Large, clean, comfortable rooms.

TRANSPORTATION LINES. O. R. & N. OREGON SHORT LINE AND UNION PACIFIC TWO TRAINS TO THE EAST DAILY.

Through Pullman standard and Tourist sleepers daily to Omaha and Chicago; tourist sleeper daily to Kansas City.

TIME SCHEDULE FROM PENDLETON. EASTBOUND. Arrive. Depart. No. 2, Chicago Special 5:30 p. m. 5:40 p. m.

OCEAN AND RIVER SCHEDULE FROM PORTLAND. All sailing dates subject to change. For San Francisco every five days.

Washington & Columbia River Railroad TAKE THIS ROUTE FOR Chicago, St. Paul, St. Louis, Kansas City, St. Joseph, Omaha and ALL POINTS EAST AND SOUTH.

TIME CARD. Arrive at Pendleton Monday, Wednesday and Friday, 1:45 p. m.—Tuesday, Thursday and Saturday, 11:45 a. m.

NORTHERN PACIFIC RUNS PULLMAN SLEEPING CARS ELEGANT DINING CARS TOURIST SLEEPING CARS

THROUGH TICKETS TO CHICAGO WASHINGTON PHILADELPHIA NEW YORK BOSTON

DELIGHTFUL ROUTE DAYLIGHT RIDES IZZY CRAGS KEEP CANYONS A Golden Opportunity

SCHEDULE OF PEN DLETON-UKIAH Stage Line Daily trips between Pendleton and Ukiah, except Sunday.

HOTEL PENDLETON VAN DRAN BROS., PROPRIETORS. The Best Hotel in Pendleton and as good as any.



The Hotel Pendleton has just been refitted and refurbished throughout. Phone and fire alarm connections with all rooms.

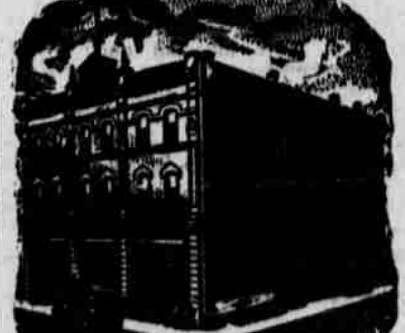
Rates \$2.00 and \$2.50 Special rates by week or month. Excellent Cuisine. Prompt Dining Room Service.

Hotel St. George GEO. DARVEAU, PROPRIETOR.



European plan. Everything first-class. Accommodations the best. All modern conveniences. Steam heat throughout.

THE Hotel Bickers (Formerly Golden Rule.) COURT STREET.



Remodeled and refurbished throughout. Everything neat, clean and up-to-date. Steam heat and electric lights. Best cuisine. Prompt service.

THE PORTLAND PORTLAND, OREGON.

Insure in Reliable Companies That pay their losses promptly. Our companies stand at the head of the list.

Hartford Fire Insuran. Co., \$12,269,076. Alliance Assurance Co., \$9,039,948. London & Lancashire Fire Insurance Co., 2,544,688.

FRANK B. CLOPTON AGENT. 112 EAST COURT STREET.

REVIEWED

Market continues to show weakness. ...Cents Per 100 Eggs. ...Portland Market—Receipts Light—Sheep Are Dull.

Union Stockyards, July 15.—Market is showing weakness with the quotations 25c lower. This is due to the smaller demand for sheep.

CHOICE BEEF CATTLE, ETC. Steers, \$3@3.50. Cows, \$2.50@2.85. Hogs, live, 5 1/2@6.

HAY AND FEED. Chop barley, \$25 per ton; 1 1/2c per lb. Chopped wheat, 1.40 per 100.

Annual meeting Grand Lodge Benevolent and Protective Order of Elks, Cincinnati, Ohio, July 23d-28th, 1904.

Imperial Council Ancient Arabic Order Mystic Shrine, Atlantic City, N. J., July 13th-15th, 1904.

National Encampment Grand Army of the Republic, Boston, Mass., August 15th-20th, 1904.

Knights of Pythias National Encampment, Louisville, Ky., August 15th, 1904.

For the above occasions the O. R. & N. makes a rate of \$71.50 to Detroit and return. Tickets on sale July 2d. Limit 90 days from date of sale.

To Cincinnati, Ohio, and return, \$69.25. Sale date of tickets July 10th, 11th, 13th and 14th. Final limit 90 days from date of sale.

DR. C. GEE WO WONDERFUL HOME TREATMENT. This wonderful Chinese doctor is called great because he cures people without operation.

Ladies' Capsules Garded Lady Agents Wanted. Safe, reliable. Absolutely guaranteed to cure leucorrhoea and female weakness.

SCHEDULE OF PEN DLETON-UKIAH Stage Line Daily trips between Pendleton and Ukiah, except Sunday.

THE STANFIELD HOUSE, 313 SOUTH Main street, Mrs. L. Michael, prop. Large, clean, comfortable rooms.