

The Great White Exposition of 1904

At the Alexander Department Store

On Special Sale Tuesday and Wednesday

**20 Per Cent
20 Reduction**

Muslin Underwear for Women—Mammoth displays of newest styles in great variety at powerfully low prices. Every new and desirable styles imaginable. Chemise, drawers, corset covers, night gowns and petticoats.

ALEXANDER DEPARTMENT STORE

MUSLIN UNDERWEAR FOR WOMEN

ON SALE TUESDAY AND WEDNESDAY

EXTENT AND COST OF OREGON'S IRRIGATED AREA

The census bureau has sent out the following interesting statistics concerning irrigation in Oregon. The facts are authentic and are of vital interest to those interested in irrigation. The report says:

In 1902 the number of farms reported was 5,133, with an irrigated area of 439,981 acres, an increase since 1899 of 51,671 acres, or 13.3 per cent for the three years. The per cent of increase for the 10 years from 1889 to 1899 was 118.4. In 1902, 2,555 irrigating systems were in operation, representing a total construction cost of \$2,089,609, an average of \$818 per system and \$4.75 per irrigated acre. The total length of main canals and ditches was 3,653 miles, an average of 1.4 miles per system. The increase in cost since 1899 is \$245,852, or 13.3 per cent.

The aggregate number of acres irrigated by the 2,417 systems receiving water from streams was 428,925, belonging to 4,978 farms. The average cost per acre was \$4.81. The 114 systems supplied with water from springs irrigated 10,759 acres on 131 farms, the average cost per acre being \$2.13. Twenty-four well systems irrigated 297 acres, representing 24 farms, at an average cost per acre of \$15.27.

The stream systems cost, initially, \$2,062,188 for the 3,604 miles of main canals and ditches and the necessary dams and headgates. The first cost of the spring systems was \$22,985, and the length of main ditches was 49 miles. The construction cost of the well systems was \$4,536.

Snake River Drainage Basin.
This river, the largest tributary of the Columbia, rises in Yellowstone National Park, crosses Southern Idaho, and forms the northern half of the eastern boundary of Oregon. Along this part of its course the Snake flows through deep canons, rendering irrigation therefrom almost impossible.

In 1902, this portion of the Snake

river and its Oregon tributaries and the springs and wells within the drainage basin irrigated 167,790 acres belonging to 2,004 farms, at an average initial cost per acre of \$5.79. There were 737 systems with 1,388 miles of main canals and ditches. The total first cost of construction was \$971,743. Two systems, located near Ontario, received water directly from the main stream and irrigated 415 acres representing 22 farms, at an average cost per acre of \$36.52. The total cost of constructing the 13 miles of canals and ditches, dams, headgates, flumes, etc., was \$15,154.

In 1902, Powder and Malheur rivers, the principal tributaries of the Snake in Oregon, with their affluents, irrigated more acres than all the other Snake river tributaries in Oregon.

Powder river and tributaries supplied water to 183 systems, which irrigated 58,428 acres belonging to 606 farms.

The necessary main canals and ditches, 412 miles in length, together with dams, head gates, etc., cost \$268,101, an average first cost per acre of \$4.58.

Malheur river and tributaries irrigated 40,686 acres on 274 farms. There were 129 systems, with 322 miles of main canals and ditches. The total construction cost was \$282,898 and the average first cost per acre, \$6.95.

Water from the Grand Ronde in the northeastern portion, was diverted by 128 systems to 389 farms, and irrigated 22,628 acres.

The 176 miles of main canals and ditches and other irrigation works cost \$82,011, an average cost per irrigated acre of \$3.62. Burnt river and tributaries supplied water to 121 systems, costing \$65,691, and irrigated 16,042 acres belonging to 254 farms. There were 184 miles of main canals and ditches, and the average cost per irrigated acre was \$4.09.

The Owyhee river and tributaries, in the southeastern part, furnished water to 190 farms through 49 systems, constructed at a cost of \$191,736. The area irrigated was 13,215 acres and the average cost per acre, \$14.51. There were 115 miles of main canals and ditches.

Eighteen systems receiving water from springs, irrigated 553 acres belonging to 18 farms at an average cost per acre of \$4.99. The total cost of construction, including the nine miles of canals and ditches, was \$2,760. Seven well systems, costing \$2,926, irrigated 165 acres, representing seven farms. The average cost per acre was \$17.73.

Columbia River Drainage Basin.
This drainage basin comprises that portion of Oregon drained by the Columbia river and its tributaries below the mouth of the Snake. The main stream is not utilized to any great extent because of its slight fall and the precipitous nature of its banks.

There were, in 1902, seven systems supplied from the main stream, water being taken from it by pumping plants, and 198 acres belonging to seven farms were thus irrigated at an average cost per acre of \$17.68. The length of main canals and ditches was five miles, and the total cost of construction, \$3,500.

From all sources in this drainage basin water was supplied through 960 systems to 64,355 acres, representing 1,731 farms, at an average cost per acre of \$6.39. The total cost of constructing the 1,619 miles of main canals and ditches and the necessary dams, head gates, reservoirs, etc., was \$410,928.

So far as irrigation is concerned, John Day and Deschutes rivers are the largest and most important of the tributaries, and supplied water to 48,712 acres out of a total irrigated area of 64,355 for the entire basin. The former has its headwaters on the western spur of these mountains on the north and Strawberry mountains on the south. The upper course is westward, but midway it turns rather abruptly to the north and enters the Columbia just above John Day. The latter has its headwaters on the eastern slope of the Cascade mountains, near Diamond Peak and Mount Thielsen, flows northward with slight deviation to the east and enters the Columbia a few miles below Deschutes. Its principal tributary, Crooked river, rises near the center of Eastern Oregon, and flows westward and northward to its confluence with the main stream.

In 1902, John Day river and tributaries irrigated 27,064 acres, representing 554 farms at an average cost per acre of \$4.35. There were 381 systems having 402 miles of main canals and ditches, and the total cost of construction was \$120,060.

One hundred and ninety systems, supplied with water from the Deschutes river and tributaries, irrigated 21,108 acres on 294 farms. The total first cost of construction was \$138,755, an average of \$6.57 per irrigated acre. The entire length of main canals and ditches was 351 miles.

Hood river and tributaries irrigated 2,837 acres; Walla Walla and tributaries, 3,321; Umatilla and tributaries, 4,485; and Willow creek and tributaries, 3,013.

Fifty-nine systems, with 17 miles of main canals and ditches, diverted water from the Willamette river and tributaries and irrigated 448 acres in holdings averaging 6.6 acres, largely in gardens and orchards. The total first cost of construction was \$3,240, an average of \$7.23 per irrigated acre.

It is claimed that one-half the acreage of asparagus in the United States was destroyed by the floods on the lower Sacramento and San Joaquin rivers. One field of 1,800 acres was ruined.

Let us show you Palmer's new Perfumes.

Ariston

The latest and best.

USE PALMER'S

Garland of Violets Toilet Soap

A pure soap, finely perfumed.

Brock & McComas Company

NOTICE

TO ALL MY FRIENDS AND PATRONS:

I TAKE PLEASURE IN INTRODUCING TO MY FRIENDS, DR. L. L. AND T. H. WHITE, TO WHOM I HAVE SOLD MY DENTAL BUSINESS IN THIS CITY. I THOROUGHLY RECOMMEND THE DR. WHITE AS FIRST-CLASS DENTISTS IN EVERY RESPECT, AND WILL ESTEEM IT A FAVOR FOR ANY OF MY PATIENTS TO PLACE THEIR CASES IN HANDS OF THE DR. WHITE.

RESPECTFULLY,

E. A. MANN

GOOD DRY WOOD

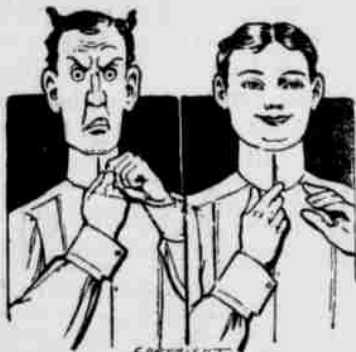
All Kinds

I have good sound wood which is delivered at reasonable prices

For Cash.

W. C. MINNIS

Leave orders at Neuman's Cigar Store.



Peace Provokers and Profanity Preventers

often lie in the bosom of a shirt, the curl of a collar. Hence, logically our laundry promotes morality, in that its output causes no complaint, but soothes the troubled spirits of men accustomed to frayed edges and crumpled bosoms. Why don't you try this laundry for awhile and "be good?"

THE DOMESTIC STEAM LAUNDRY

LEGAL BLANKS Write the East Oregonian for a free catalogue of them. A full supply always kept in stock.

What Shall We Have for Dessert?

This question arises in the family every day. Let us answer it to-day. Try

Jell-O

a delicious and healthful dessert. Prepared in two minutes. No boiling! No baking! Add boiling water and set cool. Flavors—Lemon, Orange, Raspberry and Strawberry. Get a package at your grocers to-day.

SPRING TIME

YOU ARE NOW BEGINNING TO CAST ABOUT AND PLAN FOR YOUR SPRING PURCHASES. YOU POSSIBLY WANT SOMETHING IN THE LATEST, UP-TO-DATE WOOL OR WASH FABRICS FOR YOURSELF OR DAUGHTERS, A SPRING SUIT; OR SUIT OF CLOTHES FOR YOUR HUSBAND OR SON. THESE ARE MATTERS WORTHY OF YOUR CONSIDERATION AND SHOULD ENGAGE YOUR ATTENTION. WE CAN HELP YOU ANSWER THESE QUESTIONS INTELLIGENTLY IF YOU WILL GIVE US A LITTLE OF YOUR TIME AND READ WHAT WE HAVE TO SAY. WE WILL FIRST SAY THAT WITH OUR EASTERN CONNECTION WE OWN OUR GOODS AT ABSOLUTELY THE LOWEST PRICE THAT MONEY AND INTELLIGENCE WILL BUY THEM. WE BUY FOR SPOT CASH, WHICH GIVES US THE LOWEST PRICE ON ALL MERCHANDISE. WE SELL FOR SPOT CASH, AND THEREFORE YOU DO NOT HELP TO PAY THE BILLS OF PARTIES WHO FORGET TO PAY. OUR PRICES ARE MARKED AT THE LOWEST POSSIBLE FIGURE THAT WILL ALLOW US JUST COMPENSATION FOR OUR SERVICES AND USE OF CAPITAL INVESTED.

WITH THESE FACTS BEFORE YOU, YOU ARE CORDIALLY INVITED TO VISIT US AND INSPECT STOCK AND GET PRICES. REMEMBER, ALL GOODS ARE MARKED IN PLAIN FIGURES AND "ONE PRICE" TO ALL. BELOW WE MAKE SPECIAL MENTION OF A FEW ITEMS THAT WILL MERIT YOUR ATTENTION.

At 50c and 65c PER YARD WOOL FABRICS

VOILES—38-inch wide, in black, Royal blue, brown, slate and champagne shades.

ETAMINES—40 inches wide, in black, red, brown, blue and champagne shades.

MELROSE ETAMINES—42 inches wide, in red, brown, black and blue shades.

PLAIN SICILIANS—38 inches wide, in black, brown, blue, slate, grey and champagne shades.

FIGURED MOHAIRS—38 inches wide, in black, blue and brown.

FANCY MIXED SUITINGS—40 inches wide, in blue, mixed, brown mixed, green mixed and red mixed shades.

A Big Battle in Ladies Suit and Skirt Department. Low Prices CONQUER. Don't fail to see those pretty new Eton Suits, Tailored and Trimmed for service and style.

Ask to see that full-fashioned Eton in black, blue and brown Oxford Suiting. Price \$16.50.

WHITE WAISTING WASH FABRICS

Mercerized lace stripes, plain oxford, plain mercerized, bleached and brown linen, polka dots and striped Batiste.

COLORED SUITING WASH FABRICS

SILKY ORGANDIES—In red, pink and blue, black and canary.

Mauslains—Plain and Oriental, polka dots and striped leaching colors and shades at, per yard, 50c to 65c.

A FREE ATTRACTION

Our corner window display of white and wash goods for the next week.

At 5c PER YARD—27-Inch Burmah cotton shalies, white with blue, black and red polka dot, fancy floral patterns, Oriental and stripes. Just the thing for house wrappers and kimono. Best come early.

HOW ABOUT THIS?

Is your husband and son dressed to your liking? We have everything in the clothing line for service or dress. We can dress the old man, the young man, the youth or the child to your taste if you will be convinced. Come and see. Seeing is knowing; hearing is simple evidence.

IF YOUR FEET ARE NOT COMFORTABLE, DON'T FORGET US.

Whittinghill Mercantile Co.

Successor to LYONS MERCANTILE CO.

126-130 Court Street

Pendleton, Oregon

McMinn's School of Dancing

Monday, class night. Wednesday and Saturday, classes from 7 to 9 o'clock. Socials from 9 to 12.

Children's Matinee, Saturday, 2:30.

Not an ordinary article, but something extraordinary is

Hill's Pure California Olive Oil

For medicinal use as well as for salads and table use. This is the highest quality and purest oil made.

Sold exclusively in Pendleton by

Despain & Clark

The French Restaurant

Best 25 cent Meal in the City Private Dining Parlors

Elegant Furnished Rooms in Connection

GUS LaFONTAINE, Prop.

633 Main Street

The East Oregonian is Eastern Oregon's representative paper. It leads and the people appreciate it and show it by their liberal patronage. It is the advertising medium of this section.