

Business Cards and Societies

PROFESSIONS AND TRADES, ALPHABETICALLY ARRANGED.

PHYSICIANS.

COLE, OFFICE IN JUDD building, 10 to 12 a. m.; Telephone red 371.

M. D. DESPAIN BLOCK, corrects eye troubles, cataracts and impaired hearing. Specially fitted for refractive error into 1131.

RINGO, OFFICE OVER Savings Bank. Telephone 301.

M. D. HOMEOPATHIC and surgeon. Office in Judd building, black 73; residence, 24.

PAULL, ROOM 17 ASOCIATION building. Telephone main 931; residence 161.

HENDERSON, PHYSICIAN Office in Savings Bank building. Telephone Main 141, res. Main 141.

BLAKESLEE, CHRONIC diseases and diseases of children. Office in Judd building, corner Main and Washington. Telephone main 721; residence 273.

BOONE, OSTEOPATH 11 Thompson street. House 303, and office phone Black 303.

PHYSICIAN AND SURGEON. Office in Judd building, Room 15, Office 151. Residence Phone Main 1421.

DENTISTS.

PHYSICIAN, OFFICE IN ASOCIATION building, new drug store. Phone red 71.

DENTIST, OFFICE IN ASOCIATION building, new drug store. Phone red 271.

BANKS AND BROKERS.

NATIONAL BANK OF ATHENA. Capital, \$50,000; surplus and interest on time deposits, foreign and domestic exchange, promptly attended to. Henry T. J. Kirk, vice-president; L. M. Kemp, cashier.

WESTON BANK OF WESTON, Oregon. Does a general banking business, bought and sold promptly attended to. J. R. Jamieson, George W. Probstel, J. R. Kilgore, cashier; E. Hartman, M. M. Johns, T. P. Gray, J. E. Kilgore, Robert G. W. Probstel.

CONTRACTORS AND BUILDERS.

WARD ARCHITECT AND SURVEYOR. Makes complete and reliable plans in the city or county. 17 Judd building.

COLE, CONTRACTORS AND BUILDERS. Estimates furnished on short notice. Specially. Prompt work on Bluff street near Main.

CONTRACTOR AND BUILDERS. Estimates furnished on all kinds of cement walks, stone walls, etc. at East Oregonian office.

HUTMAN, ARCHITECT AND SURVEYOR. Room 7, over Boston building, Oregon.

BLEE, PLASTERING AND CEILING. Cement walks a specialty. Established free. Work guaranteed. Plans at Badley & Zehner's cigar store. P. O. box 104.

COND-HAND DEALERS.

REWARD, THE OLD RELIABLE. First-class repairing with shop in rear of Dindinger Co.

COND-HAND DEALERS.

SOLE DEALER IN SECOND-HAND FURNITURE. If there is anything you want in second-hand furniture, white ware and crockery, call and see. No. 212 Court street.

COND-HAND DEALERS.

COND-HAND DEALERS. Goods and sold; pawn brokers; money on all kinds of articles. Waters Bros. 732 Cottonwood street.

COND-HAND DEALERS.

COND-HAND DEALERS. BRASSING, BARBER SHOP AND REPAIRS. Main street, three doors west of Hotel St. George. First-class.

COND-HAND DEALERS.

COND-HAND DEALERS. SANITARY BARBER SHOP. Block, Court street; best work; all the modern improvements; sterilized; bath rooms in connection.

COND-HAND DEALERS.

COND-HAND DEALERS. CABS AND CARRIAGES. ERWIN BAKER, PROPRIETOR. Office and waiting room, next to Savings Bank.

COND-HAND DEALERS.

COND-HAND DEALERS. HORSE AND FEED STABLES. LIVERY BOARD AND SALE. M. J. Carney, proprietor, for stock boarded at reasonable rates. 113 Alta street.

COND-HAND DEALERS.

COND-HAND DEALERS. EMPLOYMENT OFFICES. EMPLOYMENT OFFICE, 638 MAIN street. If you need help or seek employment, call on us. Phone Main 1011.

COND-HAND DEALERS.

COND-HAND DEALERS. PATERNAL ORDERS. LODGE NO. 4, MEETS EVERY second in Secret Society hall, at Pendleton, Ore. R. W. Keyes, Sec'y. W. J. Keyes, C. C.

COMMERCE - TRADE

SELLERS AND BUYERS OF WHEAT DISAGREE.

Huckleberries Hard to Find and Currants Are Out of the Market—Nearly All Vegetables Have Become Cheaper, the Exception Being Tomatoes—Divergence in the Views of Sellers and Buyers of Wheat Everywhere.

It is possible to buy huckleberries in the city, but it is hard for the housewife to find them in the market for they are so perishable that it does not pay the grocers to carry them in stock. However, they are brought in to the city by the country people and are worth 60c a gallon. The crop is large this year and the hillsides are red with them.

Currants have about gone out of the market, though there is now and then a lot brought into the city and traded in at one of the stores or the other. Tomatoes are about the same this week as last, though it is possible to get three pounds of them for 25 cents. This is a little cheaper than last week. The tomato crop is a disappointment to the growers and the prices will remain relatively high for the reason that the frost has blighted the vines and the fruit has been killed in part.

Green corn has fallen as the supply has come in and now the lovers of the cereal in its green state can gorge to their hearts' content for it can be bought for 20 cents per dozen ears. Carrots are as cheap as the dirt from which they sprang, and can be got for 2 cents for every pound, and before the week is out perhaps they will be cheaper than ever for they are the cheapest thing that is sold.

Penleton Retail Grocery Prices.

Coffee—Mocha and Java, best, 50c per lb; next grade, 35c per lb; lower grades coffee, 25c to 15c per lb; package coffee, and 20c per lb, 3 packages for 50c.

Rice—Best head rice, 12 1/2c per lb; next grade, 10c per lb.

Sugar—Cane granulated, best, \$6.50 per sack; do, 13 pounds, \$1.

Salt—Coarse, \$1.10 per 100; table, \$2.50 per 100.

Flour—B. B., \$4 per barrel; Walters, \$4 per barrel.

Cherries, Royal Ann, 10c box; pie cherries, 3 for 25c.

Watermelons, 25c@50c each.

Muskmelons, 5c@25c each.

Raspberries, 10c box.

Currants, 25c gallon.

Apricots, 5c box.

Peaches, 7c pound.

Peach plums, 5c.

Tomatoes, 10c pound, or three pounds for 25c.

Green corn, 20c dozen.

Radishes, 5c bunch.

Onions, 3c bunch.

Cabbage, 4c per pound.

Carrots, 2c pound.

Green apples, 3c lb, \$1 box.

Cucumbers, 2 for 5c.

New potatoes, 2 1/2c per pound.

Penleton Livestock, Poultry and Produce Market.

Chickens—Hens, 7c; \$4.00 per dozen; roosters, 4 to 6 cents.

Geese, per dozen, \$9.

Ducks, per dozen, \$4.

Butter, 40 to 50c, good.

Eggs, 20c.

Garlic, 15c per pound.

Choice Beef Cattle, Etc.

Cows, per hundred, \$3.

Steers, \$3.60.

Hogs, live, \$5@5.50.

Hogs, dressed, 7@7 1/2c.

Veal, dressed, 7@8 1/2c.

The Wheat Trade.

Portland, Aug. 6.—Harvesting is progressing in all directions and the reports from the harvest fields are not very flattering. A few unimportant sales have been made during the week to millers, and these at prices entirely too high for exporters to attempt to secure. New wheat has hardly as yet been offered for sale; farmers' ideas as to the values are greatly inflated and they show very little disposition to meet buyers' ideas as to values. This position must in the end result disastrously to the selling interest. Farmers and sellers must bear in mind that prices here are subject to selling values in Europe, cost of freight and insurance added, and that exporters take all the risk attached to the export business. It is well known that present bids put out are much above a parity with selling prices abroad July 7 cents per bushel, and unless a reaction sets in there will be very little business done early this season. As to selling prices it is difficult to give an accurate figure; old wheat, club is quoted 78c; new, 75c; bluestem, 81c for old; new, 78c, and valley, old, 79c and 80c, with no quotation for new.

Flour—Market is fairly steady and a good demand exists from the Orient; a great many orders are constantly refused, as bids are too low, considering the price millers have to pay for wheat. There is no demand for the United Kingdom for any of our product, as prices are too high and we must look to China, Japan and South Africa for our trade. San Francisco will be a good consumer this year, as the wheat crop is very small, and possibly a demand will be made for some of the Northern flour. South and Central America is taking fair stocks. Quotations are very firm at present and range from \$3.85 to \$4.35 per barrel.

Millstuffs—The demand for mill offal is very good and there is no change in the situation, either as to demand or prices; both are well maintained. Quotations are for bran, \$22.50, and shorts, \$23 per ton. Middlings are \$26.50 per ton.

Barley—Market is without change, as new barley has not yet made its appearance; there is nothing doing. Country warehouses have only been receiving small lots as yet. Sellers' ideas as to values are entirely out of range of buyers' views as to values. That there is a very strong deadlock existing and nothing will be done until the same is broken. Feed barley is quoted by buyers at \$19 per ton, and brewing at \$20.

San Francisco Markets.

San Francisco, Aug. 6.—The local wheat market is very strong and prices are soaring skyward. Farmers are not free sellers and buyers who are in need of wheat have to meet the raise farmers demand. Large shipments are coming from Oregon and Washington and there is no doubt that the crop will hardly total 16,000,000 bushels. Shipment of new wheat has as yet been slow, and very little will be done in the way of export for 30 days. Millers are free buyers and quotations for shipping range from \$1.40 to \$1.43 1/2, milling \$1.50 to \$1.55 per cental.

Barley—All the week both option and cash barley have steadily advanced, and at the close the market is strong and tends upward. The barley crop is larger than last year, and the proportion of brewing grades to the whole is smaller. Last year Southern California was an importer; this year she is an exporter, with a more limited market therefore, and a larger crop, prices for feed, particularly, are going skyward. At the close there was a very strong tone, and prices were advanced over those of last week to a marked degree. Quotations, feed \$1.05 to \$1.08 1/2, brewing, \$1.12 1/2 to \$1.15 per cental.

THE FOE OF WHEAT.

Yellow Mustard Taking Many Crops in Eureka Flat.

Yellow mustard is becoming the most feared weed that infests the Eureka flat country. All along the track of the Washington & Columbia River Railway, and especially in the vicinity of Lee, the weed has spread till it is a real menace, says the Walla Walla Union.

John Hoffman, who has a farm of 5,000 acres at Lee, fears that yellow mustard will overrun the country so that it will be impossible to raise anything like a crop, unless the farmers organize and begin its extinction. "There's a weed," said Mr. Hoffman, pointing to a dark green growth about 12 inches high, not unlike a Russian thistle in shape, "that we have got to get together and destroy. The seed from one bunch will reseed 40 acres."

Mr. Hoffman said three years ago there was not a stalk of yellow mustard on the flat. Today the fields along the railroad are spotted with it. He believes the seed was scattered along the railway track from cars from the East.

Explaining why the weed has not infested farms lying some distance from the track on either side, farmers say that the wind usually blows in the direction in which the track runs, and that the seed is shaken from the weed as it blows along the railway.

At Lee the spaces along the tracks are so densely covered with yellow mustard that it impedes walking. He points to this as a possible condition of the fields if steps are not taken to destroy the weeds.

There is talk of organization on the part of the farmers to rid the flat of the new foe to successful wheat raising.

Four negroes have been arrested in New York upon suspicion of murdering a white man and throwing his body into the Hudson river.

TRANSPORTATION LINES.



O.R.&N. OREGON SHORT LINE AND UNION PACIFIC Two Trains to the East Daily

Through Pullman standard and Tourist sleeping cars daily to Omaha, Chicago; tourist sleeping car daily to Kansas City; through Pullman tourist sleeping cars, personally conducted weekly to Chicago, Kansas City, returning chair cars (seats free) to the East daily.

DEPART FOR	Time Schedule From Pendleton	ARRIVE FROM
Portland 8:10 a. m.	Portland Special No. 1	The East 8:00 a. m.
Chicago 5:50 p. m.	Chicago Special No. 2	Portland 5:40 p. m.
Portland 1:30 a. m.	Mail and Express No. 3	The East 1:45 a. m.
The East 4:50 a. m.	Mail and Express No. 4	Portland 4:45 a. m.
Pendleton 7:00 a. m.	Pendleton Passenger No. 7	Spokane 5:45 p. m.
Spokane 5:15 a. m.	Spokane Passenger No. 8	Pendleton Mixed Train No. 41
6:30 p. m.	Walla Walla Branch Mixed Train No. 42	

Ocean and River Schedule.

FROM PORTLAND.

All sailing dates subject to change. For San Francisco sail every 5 days.

Daily except Sunday 8:00 p. m. Saturday 10:00 p. m.

Columbia River To Astoria and Way Landings. 4:30 p. m. Sunday.

Willamette River.

Boats leave Portland daily, except Sunday, stage of water permitting for Willamette and Yamhill River points.

Leave Riparia 4:30 a. m. Daily Except Mon	Snake River Riparia to Lewiston	Leave Lewiston 7:00 a. m. Daily Except Mon
---	---------------------------------	--

F. F. WAMBLEY, Agent, Pendleton

WASHINGTON & COLUMBIA RIVER RAILROAD

Take this route for Chicago, St. Paul, St. Louis, Kansas City, St. Joseph, Omaha and All Points East and South

Portland and points on the Sound

TIME CARD

Arrive at Pendleton Monday, Wednesday and Friday, 1:45 p. m.—Tuesday, Thursday and Saturday, 11:45 a. m.

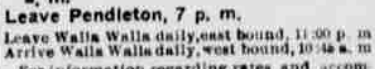
Leave Pendleton, 7 p. m.

Leave Walla Walla daily, east bound, 11:00 p. m. Arrive Walla Walla daily, west bound, 10:45 a. m.

For information regarding rates and accommodations, call on or address

W. ADAMS, Agent, Pendleton, Oregon

S. B. CALDERHEAD, G. P. & Ticket Agent, Walla Walla, Washington.



NORTHERN PACIFIC RAILS

Pullman Sleeping Cars, Elegant Dining Cars, Tourist Sleeping Cars.

ST. PAUL, MINNEAPOLIS, DULUTH, FARGO, GRAND FORK, CROOKSTON, WINNEPEG, HELENA and BUTTE.

THROUGH TICKETS TO CHICAGO, WASHINGTON, PHILADELPHIA, NEW YORK, BOSTON

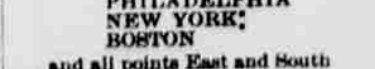
and all points East and South

through tickets to Japan and China, via Tacoma and Northern Pacific Steamship Co. and American line.

TIME SCHEDULE.

Trains leave Pendleton daily except Sunday at 7:30 p. m.

For further information, time cards, maps and tickets, call on or write W. Adams, Agent, Pendleton, Oregon, or A. D. CHARLTON, Third and Morrison Sts., Portland, Ore.



HOTEL ST. GEORGE

CORNER MAIN AND WEBB STS.

HEATED BY STEAM LIGHTED BY ELECTRICITY

American Plan, rates \$1.25 to \$2.00 per day.

European Plan, 50c, 75c, \$1.00. Special rates by week or month.

Free 'bus meets all trains' Commercial trade solicited Fine sample rooms

Special Attention Given Country Trade

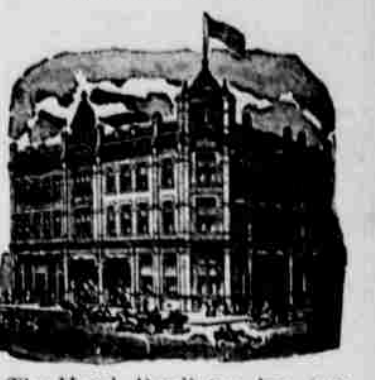
ST. GEORGE HOTEL

European Plan. Block and a half from depot. Sample room in connection. ROOM RATE - 50c, 75c, \$1.00

HOTELS.

HOTEL PENDLETON

VAN DRAN BROS., Props. The Best Hotel in Pendleton and as good as any.



The Hotel Pendleton has just been refitted and refurbished throughout. Phone and fire alarm connections with all rooms. Baths in suites and single rooms.

Headquarters for Travelling Men Commodious Sample Rooms.

Rates \$2 & \$2.50

Special rates by week or month Excellent Cuisine. Prompt Diningroom service.

Bar and billiard room in connection

Only Three Blocks from Depot

GOLDEN RULE HOTEL

Corner Court and Johnson Streets, Pendleton, Oregon.

M. F. Kelly, Proprietor.



HEATED BY STEAM LIGHTED BY ELECTRICITY

American Plan, rates \$1.25 to \$2.00 per day.

European Plan, 50c, 75c, \$1.00. Special rates by week or month.

Free 'bus meets all trains' Commercial trade solicited Fine sample rooms

Special Attention Given Country Trade

HOTEL ST. GEORGE

CORNER MAIN AND WEBB STS.



HEATED BY STEAM LIGHTED BY ELECTRICITY

American Plan, rates \$1.25 to \$2.00 per day.

European Plan, 50c, 75c, \$1.00. Special rates by week or month.

Free 'bus meets all trains' Commercial trade solicited Fine sample rooms

Special Attention Given Country Trade

HOTEL ST. GEORGE

CORNER MAIN AND WEBB STS.

HEATED BY STEAM LIGHTED BY ELECTRICITY

American Plan, rates \$1.25 to \$2.00 per day.

European Plan, 50c, 75c, \$1.00. Special rates by week or month.

Free 'bus meets all trains' Commercial trade solicited Fine sample rooms

Special Attention Given Country Trade

COMMERCIAL STABLES

G. M. FROOME, PROPRIETOR.

Carriages for picnic parties. Good teams with competent drivers for commercial men. Speedy horses and handsome rigs for evening and Sunday drives. Gentle horses for family use. Stock boarded at reasonable rates. Best of care given to transient stock. Opposite Hotel Pendleton. Phone Main 161.

Scott's Santal-Pepsin Capsules

A POSITIVE CURE



For Inflammation or Catarrh of the Bladder and Discharge of Pus, or any other urinary ailment. Cures quickly and permanently the worst cases of Gonorrhoea and Syphilis. Sold by druggists. Price \$1.00, or by mail, postpaid, \$1.50, 5 boxes, \$5.00.

THE SANTAL-PEPSIN CO., BELLEFONTAINE, OHIO.

Sold by F. W. Schmidt & Co.

MEN AND WOMEN.

Use Dr. Williams' Pink Pills for general weakness, nervousness, irritability or slow action of the system. Cures all ailments of the blood, and restores the system to its normal state. Sold by druggists, or sent by express, prepaid, for \$1.00, or 5 bottles, \$5.00. Circular sent on request.



Dr. Williams' Pink Pills for Pale People

LET US FILL YOUR BILL FOR LUMBER

We can supply you with Building Material of all descriptions and save you money.

DOORS • WINDOWS

Building paper lime cement, brick and sand. Wood gutters for barns and dwellings a specialty.

Oregon Lumber Yard

Alta St., Opp. Court House