

Business Cards and Societies

PROFESIONS AND TRADES, ALPHABETICALLY ARRANGED.

PHYSICIANS.

DR. S. BRYSON, OFFICE IN JUDG... DR. M. D. DESPAIN, BLACK...

INSURANCE AND LAND BUSINESS

R. S. BRYSON, ATTORNEY AT LAW... J. M. BENTLEY REPRESENTS THE OLDEST...

BOARD AND LODGING.

HOTEL ALTA, CORNER ALTA AND... THE STRAHOON ROOMING HOUSE, 618...

WHEN YOU GO TO PILOT ROCK STOP

at the City Hotel. Good meals and... THE WHITE BOARDING AND LODGING...

MRS. R. L. HUNTINGTON HAS PURCHASED

the Lodging House at 620 Garden Street...

TONSORIAL PARLORS.

BILLY KRASSIG, BARBER SHOP AND... NEW TONSORIAL PARLORS, COURT ST.

PATTON'S SANITARY BARBER SHOP.

Beaumont block, Court street; best work...

LIVERY AND FEED STABLES.

THE DEPOT STABLES, COTTONWOOD... THE CITY LIVERY BOARD AND SALE...

COMMERCIAL STABLES, G. M. FROOME

Prop. Livery, feed and boarding. All...

EMPLOYMENT OFFICES.

STAR EMPLOYMENT OFFICE, 688... BLACKSMITHING.

COPELAND & SON, GENERAL BLACKSMITHING

and repairing; horseshoeing a specialty...

FRATERNAL ORDERS.

DAMON LODGE, NO. 4, MEETS EVERY... MISCELLANEOUS.

Proposals for Sewer Construction.

Sealed proposals will be received by the City...

CONTRACTORS AND BUILDERS.

W. C. MOTLEY, PROFESSIONAL EXPERT... THOMAS FITZGERALD, City Recorder.

Daily East Oregonian by carrier, only 15 cents a week.

THE QUEEN HOTEL, Clean & comfortable rooms

from 25 cents up. Newly furnished throughout...

Farmers Custom Mill

Fred Walters, Proprietor Capacity 160 barrels a day...

The East Oregonian is Eastern Oregon's representative paper.

It leads and the people appreciate it and show it by their liberal patronage.

COMMERCE-TRADE

GARDEN STUFFS MORE PLENTIFUL AND CHEAP.

General Slump in the Hide and Pelt Market—Nothing Doing in Grain...

The local market this week is a little mixed. Green hides have gone down...

The feature of the market this week is the appearance of asparagus, radishes, green onions and cabbage.

Wheat has not changed in the last week. Looking back, it is too early to expect a change.

The market for flour is not very active; it has been a quiet and unsatisfactory week.

The market for all kinds of offal is very good, as most of the country mills have closed down.

Stocks at tide water are low, but ample for all demands that exist at present.

San Francisco, May 14.—There is nothing doing and conservative dealers say this condition will exist until the arrival of new crop.

There is nothing doing in either feed or brewing, although the former is somewhat better than for several weeks past.

There has been a good demand for wool this week. Territory wool has been well bought.

Good to choice 1350@1550 lbs. vvs., \$4.90@5.15; fair to good, 1,000@1,200 lb. vvs., \$4.60@4.80.

Good to choice 1350@1550 lbs. vvs., \$4.90@5.15; fair to good, 1,000@1,200 lb. vvs., \$4.60@4.80.

Good to choice 1350@1550 lbs. vvs., \$4.90@5.15; fair to good, 1,000@1,200 lb. vvs., \$4.60@4.80.

Good to choice 1350@1550 lbs. vvs., \$4.90@5.15; fair to good, 1,000@1,200 lb. vvs., \$4.60@4.80.

Good to choice 1350@1550 lbs. vvs., \$4.90@5.15; fair to good, 1,000@1,200 lb. vvs., \$4.60@4.80.

Good to choice 1350@1550 lbs. vvs., \$4.90@5.15; fair to good, 1,000@1,200 lb. vvs., \$4.60@4.80.

Good to choice 1350@1550 lbs. vvs., \$4.90@5.15; fair to good, 1,000@1,200 lb. vvs., \$4.60@4.80.

Good to choice 1350@1550 lbs. vvs., \$4.90@5.15; fair to good, 1,000@1,200 lb. vvs., \$4.60@4.80.

Good to choice 1350@1550 lbs. vvs., \$4.90@5.15; fair to good, 1,000@1,200 lb. vvs., \$4.60@4.80.

Good to choice 1350@1550 lbs. vvs., \$4.90@5.15; fair to good, 1,000@1,200 lb. vvs., \$4.60@4.80.

Good to choice 1350@1550 lbs. vvs., \$4.90@5.15; fair to good, 1,000@1,200 lb. vvs., \$4.60@4.80.

Good to choice 1350@1550 lbs. vvs., \$4.90@5.15; fair to good, 1,000@1,200 lb. vvs., \$4.60@4.80.

MALTHOID ROOFING



Made in California where materials are produced. The lowest priced roofing made.

Lasts longer than all others. It is weather and water-proof and fire resisting.

The Paraffine Paint Co. San Francisco, Seattle, Portland, Los Angeles and Denver, Colorado.

T. C. TAYLOR, Agent

on hand that amounts to considerable. Prices are without change and club is quoted at 71 cents.

The market for flour is not very active; it has been a quiet and unsatisfactory week.

The market for all kinds of offal is very good, as most of the country mills have closed down.

Stocks at tide water are low, but ample for all demands that exist at present.

San Francisco, May 14.—There is nothing doing and conservative dealers say this condition will exist until the arrival of new crop.

There is nothing doing in either feed or brewing, although the former is somewhat better than for several weeks past.

There has been a good demand for wool this week. Territory wool has been well bought.

Good to choice 1350@1550 lbs. vvs., \$4.90@5.15; fair to good, 1,000@1,200 lb. vvs., \$4.60@4.80.

Good to choice 1350@1550 lbs. vvs., \$4.90@5.15; fair to good, 1,000@1,200 lb. vvs., \$4.60@4.80.

Good to choice 1350@1550 lbs. vvs., \$4.90@5.15; fair to good, 1,000@1,200 lb. vvs., \$4.60@4.80.

Good to choice 1350@1550 lbs. vvs., \$4.90@5.15; fair to good, 1,000@1,200 lb. vvs., \$4.60@4.80.

Good to choice 1350@1550 lbs. vvs., \$4.90@5.15; fair to good, 1,000@1,200 lb. vvs., \$4.60@4.80.

Good to choice 1350@1550 lbs. vvs., \$4.90@5.15; fair to good, 1,000@1,200 lb. vvs., \$4.60@4.80.

Good to choice 1350@1550 lbs. vvs., \$4.90@5.15; fair to good, 1,000@1,200 lb. vvs., \$4.60@4.80.

Good to choice 1350@1550 lbs. vvs., \$4.90@5.15; fair to good, 1,000@1,200 lb. vvs., \$4.60@4.80.

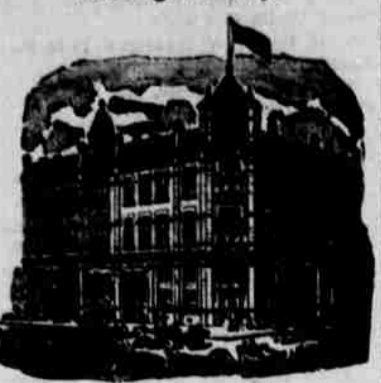
Good to choice 1350@1550 lbs. vvs., \$4.90@5.15; fair to good, 1,000@1,200 lb. vvs., \$4.60@4.80.

Good to choice 1350@1550 lbs. vvs., \$4.90@5.15; fair to good, 1,000@1,200 lb. vvs., \$4.60@4.80.

Good to choice 1350@1550 lbs. vvs., \$4.90@5.15; fair to good, 1,000@1,200 lb. vvs., \$4.60@4.80.

HOTELS. HOTEL PENDLETON

VAN DRAN BROS., Props. The Best Hotel in Pendleton and as good as any.



The Hotel Pendleton has just been refitted and refurbished throughout. Phone and fire alarm connections with all rooms.

Headquarters for Traveling Men. Commodious Sample Rooms. Rates \$2 & \$2.50

Special rates by week or month. Excellent Cuisine. Prompt Diningroom service.

Bar and billiard room in connection. Only Three Blocks from Depot

GOLDEN RULE HOTEL

Corner Court and Johnson Streets, Pendleton, Oregon. M. F. Kelly, Proprietor.



HEATED BY STEAM LIGHTED BY ELECTRICITY

American Plan, rates \$1.25 to \$2.00 per day. European Plan, 50c, 75c, \$1.00. Special rates by week or month.

Free 'bus meets all trains'. Commercial trade solicited. Fine sample rooms.

HOTEL ST. GEORGE

CORNER MAIN AND WEBB STS



GEO. DARVEAU, Prop. Elegantly Furnished Steam Heated

European Plan. Block and a half from depot. Sample room in connection.

ROOM RATE - 50c, 75c, \$1.00

THE PORTLAND PORTLAND, OREGON

American Plan, \$1 per day and upward. Headquarters for tourists and commercial travelers.

MANHOOD RESTORED "CUPIDENE"

This great Vegetable Vitalizer, the prescription of a famous French physician, will quickly cure you of all nervous diseases...

TRANSPORTATION LINES. O. R. & N.

OREGON SHORT LINE AND UNION PACIFIC

Two Trains to the East Daily

Through Pullman standard and Tourist sleeping cars daily to Omaha, Chicago, tourist sleeping car daily to Kansas City...

Table with columns: DEPART FOR, Time Schedule From Pendleton, ARRIVE FROM. Lists routes to Portland, Chicago, Spokane, Walla Walla.

Ocean and River Schedule.

FROM PORTLAND. All sailing dates subject to change. For San Francisco sail every 5 days.

Daily except Sunday 1:30 p.m., Saturday 10:30 p.m. Columbia River to Astoria and Way Landings.

Willaumette River. Boats leave Portland daily, except Sunday (stage of water permitting) for Willamette and Yamhill River points.

Leave Riparia 4:30 a.m. Daily. Snake River Riparia to Lewiston 7:30 a.m. Daily. Leave Lewiston 7:30 a.m. Daily.

Washington & Columbia River Railroad

Take this route for Chicago, St. Paul, St. Louis, Kansas City, St. Joe, Omaha, and All Points East and South

Portland and points on the Sound. TIME CARD.

Leave Pendleton, daily except Sundays 7:00 pm. Arrive Pendleton Monday, Wednesday & Friday 11:20 pm.

Arrive Pendleton Tuesday, Thursday and Saturday 9:20 a.m. Leave Walla Walla daily, east bound, 11:00 pm.

Arrive Walla Walla daily, west bound, 8:45 am. For information regarding rates and accommodations, call on or address W. ADAMS, Agent

Scott's Santal-Pepsin Capsules

A POSITIVE CURE For Inflammation of the Bladder and Disordered Kidneys. No cure no pay.



THE SANTAL-PEPSIN CO., PHILADELPHIA, PA. Sold by F. W. Schmidt & Co.

MEN AND WOMEN.

The Big 60 for unnatural discharges, irritations or obstructions of mucous membranes. Painless, and not irritating to the system.

CHICHESTER'S PILLS

Original and Daily Genuine. A Standard Remedy, used for 50 years. 10,000,000 Sold in the United States.