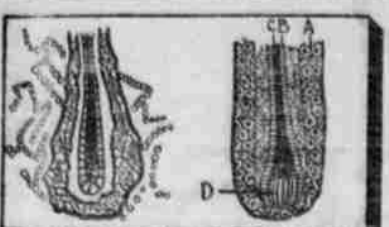


A STRONG MESSAGE



Unhealthy Hair
See the germs that cluster around and eat at the root of the hair, making dandruff, causing falling hair, finally baldness!

A Healthy Hair.
"A" marks external layer of epidermic sheath. "D" marks the inferior extremity. "B" marks the internal layer. "C" marks the root of the hair.

NEWBRO'S HERPICIDE
Destroys those parasitic germs; and it is the only hair preparation that does. "Destroy the cause, you remove the effect."
FOR SALE BY DRUGGISTS.

LET US FILL YOUR BILL FOR LUMBER

We can supply you with Building Material of all descriptions and save you money.

DOORS • WINDOWS
Building paper, lime, cement brick and sand. Wood gutters for barns and dwellings a specialty.

Oregon Lumber Yard
Alta St., Opp. Court House
OF UNTOLD VALUE.

The information contained in this Gentleman's Statement is Priceless.
The hale, the hearty, the strong can afford to toss this paper aside impatiently when they read the following, but any sufferer who has spent a mint of money and hours of excruciating torture caused by kidney complaint, will stand in his own light if he does not follow the valuable advice offered by—
Mr. William Gower Berber, of 131 West Bennett avenue, Colorado Springs, says: "I was interviewed by a gentleman in the month of June, 1899, about Doan's Kidney Pills, and was then living in Pueblo, Colo., and I told him that after suffering for four or five years with backache and other consequences of either weakened or excited kidneys, I went to my druggist in Pueblo for Doan's Kidney Pills and took a course of treatment. They cured me, and cured me quickly. Since then I have not had the slightest symptom of a recurrence. I have recommended them to a number of friends and acquaintances and told them if they did not cure them they could return the box to me, and I would pay them for them. No one ever came back with a box, so I know they were cured."
For sale by all dealers. Price 50 cents. Foster-Milburn Co., Buffalo, N. Y., sole agents for the United States. Remember the name—DOAN'S—and take no substitute.

Lumber, Lumber, Lumber.
All kinds for all purposes.

Sash, Doors and Blinds.
Planing of all descriptions done to order.

Don't place your order for Building Material until you have consulted us.

Pendleton Planing Mill and Lumber Yard.
ROBERT FORSTER, Proprietor

(Concluded.)

unjust, but I merely cite this as an example of many others. If more than one county is to be included in a senatorial district, the territory embraced therein ought to be compact as well as contiguous, so that when a senator is elected he will be in close touch with his constituents and familiar with their wants.

What is said in reference to senatorial districts is equally applicable to the representative districts. The innate sense of justice of every member of the legislature ought to suggest the propriety of redistricting the state upon a basis of justice to the people, rather than upon one that has for its object the furthering of the interests of any political party or faction of a party. The greater wonder is that the voters of the several Gerry-mandered districts have not risen in political rebellion at the injustice which has been perpetrated against them. That they have not done so is no sign that they will not in the near future, and to avoid the possibility thereof, something ought to be done at this session to remedy what every impartial observer must concede to be a rank injustice to many sections of the state.

Assessment Laws.
It is to be expected that as the state grows in population and in wealth there must be a proportionate increase in expenditure to successfully administer its affairs. But it does not follow that the general rate of taxation should continue to increase. The steady growth in wealth, constantly adding to the aggregate assessed valuation, ought to keep down the rate of the tax levy. This has not been the case. With an increased and steadily increasing expenditure, the rate of the levy has not only remained stationary, but the tendency is to increase each year. The responsibility for this condition of things lies primarily in a defective assessment of the several counties.

Notwithstanding the acknowledged fact that there has been a large increase in our population since 1892, and, in consequence, a proportionate increase in wealth, the returns made to the secretary of state by the assessors of the several counties show that the aggregate assessed valuation of all the property in the state in 1892 was \$160,263,646, while in 1899 it had decreased to \$120,828,879, reaching in 1900 the sum of \$117,804,874.13.

The decrease has been steady each year since the date first mentioned, with the exception of 1893, when there was a slight increase in the total valuation. If this condition continues, the result is inevitable under the present system of taxation that the fixed governmental charges remaining the same and other expenses continuing to increase, the rate of taxation must correspondingly increase. An examination of the assessment rolls will disclose that a majority of the counties have decreased their aggregate valuations, when every man in the state knows that there is not a single county in the state but has increased in both population and wealth. The record made would seem to indicate that the assessors were vying with each other as to who can place the lowest valuations upon the properties of their respective counties, with the evident end in view to escape a just proportion of the expenses of the state.

The constitution requires that "the legislative assembly shall provide by law for uniform and equal rate of taxation." As a step to that end, the law provides that all property shall be assessed at its true cash value. In order to be uniform it is not essential that property should all be assessed at its true cash value. This requirement would as well be attained if all property were assessed at the same proportionate part of its value. But the law is violated in letter and spirit when no uniform basis for assessment is fixed in any of the counties. In some it is assessed at one-quarter, in others at one-third, in others at one-half of its cash value, and knowingly done in open violation of the law, and no means has yet been found to compel a proper observance of the statute.

Value of Lands.
Some provision ought to be made to enable the board to ascertain and obtain the actual value of lands sought to be purchased. When application is made, the lands embraced therein should be appraised by the state land agent in connection with the local agent of the board, or some disinterested persons, to be selected for that purpose at the expense of the applicant. There should be no further sacrifice of the remaining portion of the magnificent grants made by the general government to the state for educational purposes. There have been at all times more or less abuses in connection with the sale of the public lands, and consequently much scandal has attached to various officials and private individuals because thereof. Duties which the law has intended should be performed by the clerk of the land board and other officials have not in times past been performed by them, and contemplated purchasers have been compelled to pay private individuals exorbitant prices for information which ought to

be furnished by the records of the land department.

Conclusion.
In conclusion, gentlemen, I promise you my undivided support in whatever is for the best interest of the state. Providence has blessed us with a most delightful climate and a soil so fertile that "it needs but to be tilled to smile forth an abundant harvest." Our mountains are covered with magnificent forests, and bear in their bosoms untold millions of mineral wealth. These things all combined are inviting to our confines the homebuilder from the great sisterhood of states, and capital for investment from all the world, and Oregon is on the eve of an unprecedented industrial and commercial development. But the tide of immigration can be checked, the march of improvement stayed, and the hopes of an era of commercial and industrial prosperity blighted by unwise laws and the imposition of burdensome, unnecessary and unjust taxes upon the people. That this may not be, I sincerely trust that your deliberations may be harmonious and characterized by the supreme wisdom and the loftiest and purest patriotism.

GEO. E. CHAMBERLAIN.
Great Western's New Line.
St. Paul, Minn., Jan. 14.—Within the next few days the Chicago Great Western will establish through train service between St. Paul, Minneapolis, Red Wing, Rochester and Osage, Iowa. There will be two daily trains in each direction. The route of this new run will be over the same line of the Great Western between Zumbrota and Rochester. The new line opens up a district not yet tapped by a railroad and was constructed to meet the demands of the developing interests.

Commercial Clubs Meet.
New Orleans, La., Jan. 14.—A two days' convention of representatives of commercial organizations throughout Texas, Louisiana and Mississippi was begun in this city today. The general purpose of the meeting is to discuss ways and means for promoting the industrial and trade development of the three states. Numerous questions along this line are scheduled for discussion.

Sleeping Volcanoes



A thin, vapory smoke, lazily ascending from its crater may be the only visible sign of life in the sleeping volcano, but within is a raging sea of fire, molten rock and sulphurous gases. Those who make their homes in the peaceful valleys below know the danger and, though frequently warned by the rumblings and quakings, these signs of impending eruption go unheeded. They are living in fancied security when the giant awakes with deafening roars and they are lost beneath a downpour of heated rock and scalding ashes.

Thousands of blood poison sufferers are living upon a sleeping volcano and are taking desperate chances, for under the Mercury and Potash treatment the external symptoms of the disease disappear, and the deluded victim is happy in the belief of a complete cure, but the fires of contagion have only been smothered in the system, and as soon as these minerals are left off will blaze up again. Occasional sores break out in the mouth, a red rash appears on the body, and these warning symptoms, if not heeded, are soon followed by fearful eruptions, sores, copper colored spots, swollen glands, loss of hair and other sickening symptoms.

Mercury and Potash not only fail to cure blood poison, but cause Mercurial Rheumatism, necrosis of the bones, offensive ulcers and inflammation of the Stomach and Bowels.

The use of S. S. S. is never followed by any bad results. It cures without the slightest injury to the system. We offer \$1,000.00 for proof that it contains a mineral of any description. S. S. S. is an antidote for contagious blood poison, and the only radical and permanent cure known. It destroys every atom of the virus and purifies and strengthens the blood and builds up the general health.

SSS

We will mail free our special book on Contagious Blood Poison, which gives all the symptoms of the disease with full directions for home treatment. Medical advice is furnished by our physicians without charge.
THE SWIFT SPECIFIC CO., ATLANTA, GA.

Cheap Rates Westbound.
From February 15 to April 30, 1903, inclusive, the O. R. & N. Co. will have on sale tickets from Missouri River points to Pendleton for \$22.50 from St. Paul, \$25.00 from St. Louis, \$27.50. Call on the O. R. & N. ticket agent for full particulars.

GOING OUT OF BUSINESS!

Most Extraordinary Bargains Ever offered in Eastern Oregon
Sale Starts at Once

Everything must go. The sooner we close out the stock the better pleased we will be.
70 Sets of Buggy, Hack and Team Harness.
40 Stock Saddles.
Chaparejos, Leggings, Collars, Halters, Curry Combs, Brushes, Sweat Pads, Horse Blankets, Harness Oil, Gloves, Buggy Whips and everything in the entire stock, which is complete.

EXTRAORDINARY BARGAINS
Every article in the store Cut, Slashed and Slaughtered.

COST CUTS NO FIGURE
Our object is to sell everything in the entire stock as we will positively retire from business. The goods must go and now is the chance to get Bargains.

JOE ELL,
The Harness Dealer

HOTEL PENDLETON
VAN DRAN BROS., Prop.
The Best Hotel in Pendleton and as good as any.



Headquarters for Travelers
Commodious Sample Rooms
Rates \$2 & \$2.50
Special rates by week or month
Excellent Cuisine
Prompt Dining Room Service
Every Modern Convenience

Bar and billiard room in connection
Only Three Blocks from
GOLDEN RULE HOTEL
Corner Court and Johnson Streets
Pendleton, Oregon.
M. F. Kelly, Proprietor



HEATED BY STEAM
LIGHTED BY ELECTRIC
American Plan, rates \$1.25 per day
European Plan, 50c. to \$1.50
Special rates by week or month
Free 'bus meets all trains'
Commercial trade solicited
Fine samples

Special Attention Given Country
HOTEL ST. GEORGE
CORNER MAIN AND WEBB



GEO. DARVEAU, Proprietor
Elegantly Furnished
Steam
European Plan
Block and a half from
Sample room in connection
ROOM RATE . . . 50c.

THE PORTLAND HOTEL
PORTLAND, ORE.
American Plan, \$1.00 per day
Headquarters for tourists and country
gentlemen. Special rates made to
at all times to show rooms and
modern Turkish bath establishment.
H. C. BOWEN, Proprietor

PENDLETON-STAGE LINE
STURDIVANT BROS.
Stage leaves Pendleton daily at
4:30 p. m. for Ukiah and returns
Monday to Pilot Rock, Tuesday
to Ridge, \$1.75; to Ridge and
Alba, \$2.25; to Alba and return, \$2.50;
to Ukiah and return, \$1.50.
Office in Golden Rule Hotel

The East Oregonian is the
region's representative paper
and the people appreciate
it by their liberal patronage
advertising medium of this