

Business Cards and Societies

PROFESSIONS AND TRADES ALPHABETICALLY ARRANGED.

PHYSICIANS.
 W. G. COLE, OFFICE IN JUDGMENT. Office hours, 10 to 12 a. m.; 2 to 5 p. m. Telephone, 77.
 MILLER, M. D., DESPAIN BLOCK, and corrects eye troubles, cataracts and impaired hearing. Glasses correctly fitted for refractive errors.
 J. SMITH, OFFICE OVER THE Pendleton Savings Bank. Telephone 30; see telephone 31.
 GARFIELD, M. D., HOMEOPATHIC Physician and Surgeon. Office in building. Telephone: Office, black 24; residence, black 24.
 WILLIAM HOUSE, PHYSICIAN AND Surgeon. Office, room 20, Judd building. Main 72. Residence Phone Red 23.
 J. M'FAUL, ROOM 17 ASSOCIATION block. Telephone Main 93; residence, black 161.
 M. HENDERSON, PHYSICIAN Surgeon. Specialties eye, ear, nose and throat. Office in Savings Bank building. Phone Main 85.
 OPATHIC PHYSICIANS, DR. S. & Keyes. Office one block west from Store.
 LYNNE K. BLAKESLEE, CHRONIC Nervous diseases and diseases of woman. Opp Hotel Pendleton, cor. Water Main St., Pendleton, Ore. Phone 3.
DENTISTS.
 PATRICK, DENTIST, OFFICE IN BUILDING.
 MANN, DENTIST, OFFICE IN ASSOCIATION block, over Schmidt's new store.
WHITECRAFTS AND BUILDERS.
 HOWARD, ARCHITECT AND SURVEYOR. Estimates complete and reliable for buildings in the city or country. Room 17 Judd building.
 J. & COLE, CONTRACTORS AND BUILDERS. Estimates furnished on short notice. Shop on Bluff street near Main.
 MAY, CONTRACTOR AND BUILDER. Estimates furnished on all kinds of work. Cement walks, stone walls, etc. can be left at the East Oregonian.
PHOTOGRAPHERS.
 BOWMAN LEADING PHOTOGRAPHER of the city. Harvest views. Photos for sale. Finishing done for you. Main St., near bridge. Phone 10.
ELECTRICAL SUPPLIES.
 BROS., COURT STREET, LA Block. Electricians, dealers in electrical supplies. Houses, stores, wired for lights, bells or telephones. Electricians of all kinds. Get our prices. Work a specialty.
HIDES, PELTS AND JUNK.
 CAN GET THE HIGHEST MARKET price for your pelts, hides and all of junk, such as rubber, brass, copper, zinc, iron and tin. Iron of all kinds a specialty. You can bring in 50 worth of rags or ship in 5000 worth of hides and will be treated in the way. We have come here to stay. Call and you will be satisfied. L. Co., office and warehouse next to Hotel, Pendleton, Oregon. Telephone 221.
FINANCE & LAND BUSINESS.
 PARKES, OFFICE COURT STREET. Site Golden Rule Hotel; land of wheat, suitable for raising of claims and contests a specialty.
 BAILEY, JR., U. S. LAND COMMISSIONER—Specialty made of land and proof; insurance and collections. Judd building, room 16.
BOARD AND LODGING.
 BRADON ROOMING HOUSE, MAIN ST., 3. A. Strahan, prop. Nice large well furnished in new building, with good clean.
 WHITE LODGING HOUSE, 301 SOUTH STREET, M. T. Bradley, prop. Housekeeping and lodging rooms. Good comfortable and clean, well kept beds. Lodging.
 LODGING HOUSE—CORNER OF E. and Johnson streets; good large clean with comfortable beds. Rates 50c and 1.00. Thos. Smart, Prop.
 ALTA, CORNER ALTA AND Johnson streets. Board by the day or week. Able set. Rates \$4 and \$5 per week. Feed yard in connection. L. Proprietor.
 EASTERN, SAMUEL GEORGE. Board by the day or week. Good beds and well ventilated rooms; 25c board and lodging \$5 per week. Stable in connection.
CABS AND CARRIAGES.
 CAR LINE, ERWIN BAKER, Prop. Phone Main 79. Stand in front of restaurant.
STABLES AND FEED STABLES.
 FEED AND SALES YARD, H. CHESTER, prop. 619, Alta St., bet. Webb and Alta. Treatment given horses left in our stable.
 CITY LIVERY, BOARD AND SALE Stable, M. J. Carney, proprietor, for months. Stable 118 Alta street.
 LIVERY STABLES, G. W. PROOME. Livery, Feed and Boarding. All of turnouts. Competent drivers. Opp Hotel Pendleton, telephone 16.
 LIVERY FEED AND SALES Stable. First class single and double for all occasions. 627 Cottonwood street. Phone Main 79. Elvin Craig, Prop.
 DON FRED YARD, W. T. BOYNTON. Special care given to horses left in stable. Lower Webb Street. Phone Red 10.
TONSorial PARLORS.
 KRASSIG, BARBER SHOP AND Tonsorial Parlor. Opposite Hotel St. George. Workman. Everything in best sanitary condition.

BANKS AND BROKERS.

FIRST NATIONAL BANK OF ATHENA.
 Oregon. Capital, \$50,000 surplus and profits, \$6000. Interest on time deposits. Deals in foreign and domestic exchange. Collections promptly attended to. Henry C. Adams, president; T. J. Kirk, vice-president; E. L. Barnett, cashier; F. S. LeGrow, assistant cashier.
THE PENDLETON SAVINGS BANK.
 Pendleton, Oregon. Organized March 1, 1889; capital, \$50,000, surplus, \$90,000. Interest allowed on time deposits. Exchange bought and sold on all principal points. Special attention given to collections. W. J. Furnish, president; J. N. Teal, vice-president; T. J. Morris, cashier.
THE FARMERS' BANK OF WESTON.
 Weston, Oregon. Does a general banking business. Exchange bought and sold. Collections promptly attended to. R. Jameson, president; Geo. W. Proebstel, vice president; J. R. Kilgore, cashier; directors, G. A. Hartman, M. M. Johns, T. J. Price, G. D. Graw, J. F. Kilgore, Robert Jameson, G. W. Proebstel.

FIRST NATIONAL BANK OF PENDLETON.
 Capital, \$70,000; surplus, \$95,000. Transacts a general banking business. Exchange and telegraphic transfers sold on Chicago, San Francisco, New York and principal points in the northwest. Drafts drawn on China, Japan and Europe. Makes collections on reasonable terms. Levi Anderson, president; W. F. Matlock, vice-president; C. B. Wade, cashier; H. C. Guernsey, assistant cashier.
ATTORNEYS.
BARTER AND RALEY, ATTORNEYS AT LAW. Office in Savings Bank building.
STEPHEN A. LOWELL, ATTORNEY AT LAW. Room 14, Association Block, Pendleton, Ore.
HENRY J. BEAN, ATTORNEY AT LAW. Association Block, Pendleton, Ore.
N. BECKLEY, ATTORNEY AT LAW. Office in Association block.
S. D. BOYD, ATTORNEY AT LAW, 111 Court Street.
B. REEDER, ATTORNEY AT LAW. Pendleton, Oregon.
JAMES A. FEE, LAW OFFICE IN JUDGMENT.
STILLMAN & PIERCE, ATTORNEYS AT LAW. Mr. Stillman has been admitted to practice in United States patent offices and makes a specialty of Patent Law. Rooms 10, 11, 12 and 13 Association block.

FRATERNAL ORDERS.

ROYAL NEIGHBORS OF AMERICA— Wildwood Camp, No. 2323, meets second and fourth Tuesdays of each month in Odd Fellows' hall. Mrs. Ida Holcomb, Oracle; Mrs. Ne... Robbins, Recorder.
UMATILLA TENT, No. 27, K. O. T. M.— Meets in Secret Society Hall, second and fourth Tuesdays in each month. All visiting Sir Knights cordially invited. J. S. Kees, Record Keeper; E. D. Estabrook, Commander.
PENDLETON LODGE, No. 52, A. F. and A. M., meets first and third Mondays of each month. Visiting brethren welcome. T. J. Tweedy, W. M.; Joe H. Parkes, Sec.
PENDLETON CHAPTER, No. 28—T. C. Taylor, H. P.; F. F. Wamsley, Secretary. Meets first and fourth Friday of each month in Masonic Hall.
PIONEERS OF THE PACIFIC— William Martin Encampment, No. 1. Meets every Wednesday at Hendrick's Hall. Mrs. L. E. Jampkin, Secretary.
**DAMON LODGE, No. 4—KNIGHTS OF Pythias, J. E. Nowlin, C. C.; R. W. Fletcher, K. of R. S. Meets every Monday in Secret Society Hall.
MODERN WOODMEN OF AMERICA— Tutuilla Camp, No. 6399. Meets first and third Mondays of each month at Odd Fellows' Hall. George A. Hamblin, Consul; G. A. Robbins, Clerk.
WOODMEN OF THE WORLD—REGULAR meetings of Pendleton Camp, No. 41. W. W. are held in Secret Society Hall every Saturday evening. Visiting neighbors are always welcome. J. P. Walker, Clerk; J. P. Earl, C. C.**

BOOT AND SHOE REPAIRERS.

JOHN WILSON, FIRST CLASS SHOE maker and repairer. Best material used and good work done. Shop 117 Alta street.

SECOND-HAND DEALERS.

GEORGE O'DANIEL, NEW AND SECOND hand goods bought and sold. Court St., opera house block. Call and see him.
V. STROBLE, DEALER IN SECOND hand goods. If there is anything you need in new or second hand furniture, stoves, granite ware and crockery, call and get his prices. No. 212 Court St.

BLACKSMITHING AND HORSE-SHOEING.

COPELAND & SON FOR WHEAT RACKS. Cheapest and best in town. 314 Webb street.

WANTED.

WANTED ADVERTISERS TO MAKE USE of these classified columns. If you have something you have no use for, offer to trade it for something that some other body may have and have no use for, something that you may need in your business. You may have an extra horse that you may wish to trade for a cow or a vehicle. Somebody may have the cow and twenty-five cent want ad will probably do the business.
WANTED TO PURCHASE—AT INVOICE price, a good cigar or stationary store in Pendleton. Address F. H. M., care of East Oregonian.
FOR RENT.
FOR RENT—BARN, INQUIRE OF MARY E. Rust, 320 Ann street.
ROOMS TO RENT—ENQUIRE MARY E. Rust, 320 Ann street.

Saving's Bank Free
 SEND YOUR ADDRESS TO
 the Pacific Newspaper Union
 827 Market St., San Francisco, and
 secure free, a beautiful Nickel Sav-
 ings Bank, also full particulars re-
 garding the new Three Volume 1908
 International Encyclopaedic Dictio-
 nary which is now being furnished to
 readers of this paper for only Five
 Cents a Day.



"Say, Wonderful, me boy, are you in favor of the income tax?"
 "Sure, old man; and I'm in favor of giving every man an income to be taxed."

COMMERCE—TRADE

NO CHANGE IN LOCAL MARKET IS REPORTED.

New Fruits and Vegetables, Including Apples, Blackberries, Cantalopes and Cucumbers, Have Come Into the Market.

No change is recorded in the local markets for the past week. This is the time of year that everything in the grocery and meat lines are at a standstill as to prices and the supply is equal to the demand.
 Since last week several kinds of fruits and vegetables have come into market, including apples, blackberries, green corn, cantalopes and cucumbers. Apples are selling at 1 1/2 cents per pound, blackberries are 10 cents per box, corn, 25 cents per dozen, cantalopes are 15 cents apiece and cucumbers 25 cents per dozen.
 While the prices for wheat have not been quoted—markets have not opened—the price remains strong at what it was quoted several months ago, and the indications are that it will open at 55 cents per bushel. To substantiate this belief local dealers and capitalists have been trying to contract wheat in the field at 50 cents, and they have good reason to believe they could make a good profit on their investments or this figure would not be offered.

Local Market Prices.
 The following shows the prices paid on the local market:
 Strawberries, 10c per box.
 Tomatoes, 10 cents per pound.
 Peaches, 10 cents per pound.
 Apricots, 10 cents per pound.
 Cherries, \$1.75 per crate.
 Plums, three boxes for 25c.
 Parsnips, 75c per sack.
 Cabbage, 33c per pound.
 Cheese, per pound, 20c.
 Onions, per cwt, \$1.50 to \$2.
 Green onions, 25c doz.
 Beets, per lb, 1 1/2c.
 New Potatoes, 2 1/2c per pound.
 Potatoes, per cwt, \$1.50 to \$1.75.
 Garlic 2 1/2c per lb.

Pendleton Live Stock and Poultry.
 Chickens, hens, per doz., \$2.50 to \$3.50.
 Roosters, \$3.50@4.
 Turkeys, per lb., 10c.
 Geese, per doz., \$9.
 Spring chickens, per doz., \$2.50 and \$3.
 Ducks, per doz., \$3.75.
 Pigeons, per doz., \$1.50.
 Eggs, 20c in trade.
 Butter, 25c and 50c per roll.
Choice Beef Cattle, Etc.
 Cows, per hundred, \$3.10.
 Steers, \$3.80@3.90.
 Hogs, live, \$5.25.
 Hogs, dressed, 7c.
 Calves, dressed, 8@9c.
Pendleton Retail Grocery Prices.
 Coffee—Mocha and Java, best, 40c per lb; next grade, 35c per lb, lower grades coffee, 25c to 15c per lb; package coffee, 15c lb.
 Rice—Best head rice, 12 1/2c per lb; next grade, 1-3c per lb.
 Sugar—Cane granulated, best, \$5.25 per sack; do., 16 lbs, \$1.
 Salt—Coarse, 75c per 100; table \$2.20 per 100.
 Flour, B. B. \$3.25 per bbl.
 Flour, Walter's \$3.25 per bbl.

Portland Wheat.
 Portland, July 17.—The Commercial Review in its issue today, says of the wheat market:
 The local wheat market is very dull and there is very little bought for export trade and most sales that are made in the interior are principally for milling account. Millers are compelled to pay 3 cents premium to dislodge any of the stock now held by farmers, as most of the wheat is in small lots and it is with great difficulty to secure a fair-sized parcel. There is more wheat at tidewater than that held by farmers in the country, illustrating the fact that exporters are not suffering for wheat for early loading, and whatever vessels are due for August loading are amply provided for.
 Harvesting began this week in a great many sections, and fall grain has never looked better, and a great many of the interior "wise men" predict very large yields. There is no doubt that the crop will be fully as large as that of the past season, not-

withstanding the heavy yields for the past three years, as the acreage sown is fully 10 per cent larger than the previous season.
 Spring-sown grain is doing nicely, and there is not a single report from any section of the Northwest coming in of a discouraging nature. In Oregon, both Sherman and Umatilla counties will have very large crops. Union county will be 25 per cent greater than a year ago, and other counties report fully 12 1/2 per cent larger.

The Willamette valley will have a crop fully as large as 1901. In Washington, Whitman, Lincoln, Adams and Franklin counties there is a very large crop in sight. Walla Walla will have as large as 1901. In Latah county and Nez Perces, of Idaho, the crops will be larger. The states have been thoroughly covered by our correspondents, and we find nothing but of a rosy nature so far. Prices are, for export, 65c; bluestem, 68c, and very little left; valley, 66@67c per bushel.
Wheat in San Francisco.
 San Francisco, July 17.—There is very little doing in the export wheat trade at present. Exporters have not as yet begun to do any business. Stocks at call board warehouses are large for immediate requirements. Holders have shown no disposition to offer new wheat freely and perhaps much of the prevailing dullness is due to the lack of sellers. The demand for export is not brisk, and were sellers to meet the market business would show signs of activity. Prices bid are too low by holders, and as exporters refuse to pay stiff figures, trading is very quiet. No. 1 shipping is quoted \$1.13 1/4@1.15; milling, \$1.16 1/2@1.20 per cental.
Eastern Livestock.
 Chicago, July 17.—Cattle—Market, strong; good to prime steers, \$7.75@8.70; poor to medium, \$4.50@7.60; stockers and feeders, \$2.50@5.25; cows, \$1.50@5.75; heifers, \$1.50@6.50; canners, \$1.50@2.40; bulls, \$2.50@5.50; calves, \$2.50@6.50; Texas-fed steers, \$4@6.75.
 Hogs—Market, strong; mixed and butchers, \$7.50@8.10; good to choice heavy, \$7.75@8.15; rough, heavy \$7.25@7.70; light, \$6.90@7.70; bulk of sales, \$7.50@7.95.
 Sheep—Sheep, strong; lambs, steady; good to choice wethers, \$3.50@4.25; fair to choice mixed, \$2.50@3.25; Western sheep, \$2.50@3.75; native lambs, \$2.50@6.50.
 Omaha, July 17.—Cattle—Market, best, firm; others, slow; native steers \$4.75@8.25; cows and heifers, \$3@5.25; Western steers, \$4.75@6; Texas steers, \$4@5.50; canners, \$1.75@2.75; stockers and feeders, \$2.75@5; calves \$3@5; bulls, stags, etc., \$2.25@5.25.
 Hogs—Market weak; 5c lower; heavy, \$7.75@7.95; mixed, \$7.65@7.75; light, \$7.50@7.75; pigs, \$6.50@7.25; bulk of sales, \$7.65@7.80.
 Sheep—Market, 10@20c higher; fed muttons, \$3.65@4.20; wethers, \$3.15@3.75; ewes, \$2@3.25; common and stockers, \$1.75@3.15; lambs, \$3.75@6.75.
Wool Market Stronger.
 Boston, July 17.—The wool market is stronger and decidedly active. Prices are higher by one to two cents per scoured pound, than a week ago, with a tendency to going higher. Territory wools are very firm with some new wools selling, and at better prices. Fine staple territory have moved freely at 50@52c; strictly fine at 50@51c; fine and fine mediums, 48@49c; mediums, 41@43c.
 There have been some good sales of Utah, Wyoming, Idaho, Nevada and Dakota wools. Choice Nevada has sold at 52c, and fine staple Idaho and Montana at 50c, and slightly above.

Skins, Hides, Pelts.
 Portland, July 17.—Sheepskins—Shearlings, 15@20c; short wool, 25@35c; medium wool, 30@60c; long wool, 60c@1 each.
 Hides—Dry hides, No. 1, 16 pounds and up, 15 1/2@15 3/4c per pound; dry kip, No. 1, 5 to 15 pounds, 12c; dry calf, No. 1, under 5 pounds, 10c; dry salted bulls and stags, one-third less than dry flint; salted hides, steers, sound, 60 pounds and over, 8@9c; 60 to 60 pounds, 7 1/2@8c; under 60 pounds and cows, 7c; stags and bulls, sound, 5@5 1/2c; kip, sound, 15 to 20 pounds, 7c; veal, sound, 10 to 14 pounds, 7c; calf, sound, under 10 pounds, 8c; green, (unsalted), 1c per pound less; culs, 1c per pound less; horse hides, salted, each, \$1.50@2; dry, each, \$1@

Classified Advertisements

COUNT SIX AVERAGE WORDS TO THE LINE.

TWO LINES.		THREE LINES.	
1 time	15c	1 time	30c
2 times	20c	2 times	50c
1 week	30c	1 week	40c

Extra lines: 10 cents each a week; 25 cents a line per month.

1.50; colts' hides, each, 25@50c; goat skins, common, each, 10@15c; Angora, with wool on, each, 25c@1.
 Pelts—Bear skins as to size, No. 1, each, \$5@20; cubs, \$2@5; badger, each, 10@40c; wildcat, 25@50c; house cat, 5@10c; fox, common gray, each, 30@50c; do red, each, \$1.50@2; do cross, each, \$5@15; do silver and black, each, \$10@200; fisher, each, \$5@6; lynx, each, \$2@3; mink, strictly No. 1, each, 50c@1.50; marten, pale pine, according to size and color, \$1.50@2; muskrats, large, each, 5@10c; skunk, each, 40@50c; civet or polecat, each, 5@10c; otter, for large prime skins, each, \$5@7; panther, with head and claws perfect, each, \$2@3; raccoon, for large prime, each, 30@50c; wolf, mountain, with head perfect, each, \$3.50@5; wolf, prairie, (coyote), without head, each, 30@35c; wolverine, each, \$4@7; beaver, per skin, large, \$5@6; do medium, \$3@4; do small, \$1@1.50; do kits, 50@75c.

MISCELLANEOUS.
PENDLETON MACHINE SHOP AND FOUNDRY. Baitors & How, proprietors. Blacksmithing and general jobbing. Iron and brass castings. All kinds of machinery repairs. Phone Red 26.
GENERAL REPAIR SHOP, WEBB ST., West of Hotel Eastern. All kinds of repairing done at reasonable prices. Bicycles, gun and machine repairing a specialty. Simmons & Bolla, proprietors.
LOST—AN IVORY FOOT RULE ON SOUTH Main street or Bluff street. Finder please return to H. E. Cook and receive reward.
HORSES TO PASTURE—TIMOTHY, ORCHARD and blue grasses; good pasture; plenty of running water. Terms reasonable. W. B. Ross Meacham, Oregon.
MISS MINNIE S. MOSE, GRADUATE NURSE, 329 Turk street. Telephone No. 144. 354; calls day or night promptly responded to.
KELLAR BROS. PAINTERS, PLASTERING and cementing. Cement walks a specialty. Estimates furnished free. Work guaranteed. Leave orders at Hadley & Zahner's cigar store, Main St., P. O. box 104.

O. R. & N.

UNION PACIFIC
OREGON SHORT LINE
 AND UNION PACIFIC

DEPART FOR	Time Schedule From Pendleton	ARRIVE FROM
Chicago-Portland Special	Salt Lake, Denver, Ft. Worth, Omaha, Kansas City, St. Louis, Chicago and East.	5:30 a. m.
Atlantic Express	Salt Lake, Denver, Ft. Worth, Omaha, Kansas City, St. Louis, Chicago and East.	11:16 a. m.
St. Paul Fast Mail	Walla Walla, Lewiston, Spokane, Wallace, Pullman, Minneapolis, St. Paul, Duluth, Milwaukee, Chicago and East.	5:20 p. m.

Ocean and River Schedule.

FROM PORTLAND.

All sailing dates subject to change. For San Francisco sail every 5 days.	4 p. m.	
Daily except Sunday 8 p. m. Saturday 10 p. m.	Columbia River To Astoria and Way Landings	4 p. m. Sunday

Willamette River
 Boats leave Portland daily, except Sunday (stage of water permitting) for Willamette and Yamhill River points.

Leave Riparia 4:30 a. m. Daily Except Mon	Snake River Riparia to Lewiston.	Leave Lewiston 7:30 a. m. Daily Except Mon
---	----------------------------------	--

F. F. WAMSLEY, Agent, Pendleton

Washington & Columbia River Railroad

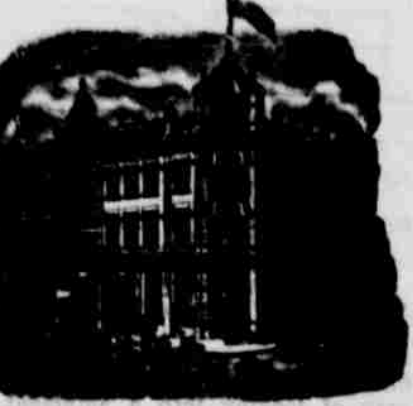
Take this route for
 For Chicago, St. Paul, St. Louis, Kansas City, St. Joe, Omaha, and All Points East and South
 Portland and points on the Sound

TIME CARD.
 Leave Pendleton, daily except Sundays at 7:30 p. m.
 Arrive Pendleton Monday, Wednesday and Friday 12:30 p. m.
 Arrive Pendleton Tuesday, Thursday and Saturday 10:30 a. m.
 Leave Walla Walla daily, east bound 8:30 p. m. Arrive Walla Walla daily west bound 12:30 a. m.
 For information regarding rates and accommodations, call on or address
 W. A. DAVIS, Agent, Pendleton, Oregon
 S. B. CALDERHEAD, G. P. Agent, Walla Walla, Wash.

HOTELS.

HOTEL PENDLETON

VAN DRAN BROS., Props.
The Best Hotel in Pendleton
 and as good as any.



Headquarters for Traveling Men.
 Commodious Sample Rooms.
Rates \$2 per day.
 Special rates by week or month.
 Excellent Cuisine,
 Every Modern Convenience.
 Bar and Billiard Room in Connection
 Only Three Blocks from Depot.

GOLDEN RULE HOTEL.

Corner Court and Johnson Streets, Pendleton, Oregon.
 M. F. Kelly, Proprietor.



HEATED BY STEAM.
LIGHTED BY ELECTRICITY
 American Plan, rates \$1.25 to \$2.00 a day.
 European plan, 50c, 75c, \$1.00
 Special rates by week or month
 Free Bus Meets all Trains.
 Commercial Trade Solicited.
 Fine Sample Rooms
 Special attention given Country Trade

Hotel St. George

GEO. DARVEAU, Prop.
Elegantly Furnished
Steam Heated
 European Plan.
 Block and a half from depot.
 Sample Room in connection.
Room Rate 50c, 75c, \$1.00

MEN AND WOMEN.

Use Big 6 for unexplained discharges, inflammation, irritation or soreness of mucous membranes. Painless, and not subject to relapse. Sold by Druggists or sent by mail. Circular sent on request.

THE KIDNEY CHEMICAL CO.
 110 N. 4th St., St. Paul, Minn., U.S.A.