

## Business Cards and Societies

PROFESSIONS AND TRADES ALPHABETICALLY ARRANGED.

### PHYSICIANS.

**G. G. COLE, OFFICE IN JUDD**  
Savings Office, hours, 10 to 12 a. m.;  
p. m. Telephone, 77.

**WILLER, M. D., DESPAIN BLOCK.**  
Corrects eye troubles, cataracts,  
and corrects eye troubles, cataracts,  
conditions and impaired hearing,  
correctly fitted for refractive error.

**J. SMITH, OFFICE OVER THE**  
Savings Bank. Telephone 80;  
telephone 81.

**GARFIELD, M. D., HOMEPATH-  
Society and Surgeon. Office in**  
Savings Bank. Telephone: Office, black  
boards, black 24.

**WILLIAM HOUSE, PHYSICIAN AND**  
Surgeon. Office, room 20, Judd building.  
Main 72. Residence Phone Red 23.

**J. M'PALL, ROOM 17 ASSOCIA-  
tion block. Telephone Main 93; resi-  
dence, black 161.**

**M. HENDERSON, PHYSICIAN**  
Surgeon. Specialties eye, ear, nose  
throat. Office in Savings Bank build-  
ing. Main 33.

### FRATERNAL ORDERS.

**ROYAL NEIGHBORS OF AMERICA—**  
Wildwood Camp, No. 2333, meets second  
and fourth Tuesdays in each month in Odd  
Fellows' hall, Mrs. Ida Holcomb, Oracle;  
Mrs. Ne. Robbins, Recorder.

**UMATILLA TENT, NO. 27, K. O. T. M.—**  
Meets in Secret Society Hall, second  
and fourth Tuesdays in each month. All  
visiting Sir Knights cordially invited. J.  
S. Kees, Record Keeper; E. D. Estabrook,  
Commander.

**PENDLETON LODGE, NO. 52, A. F. and**  
M. M., meets first and third Mondays of  
each month. Visiting brethren welcome.  
T. J. Tweedy, W. M.; Joe H. Parkes, Sec.

**PENDLETON CHAPTER, NO. 28—T. C.**  
Taylor, H. P.; F. F. Wamsley, Secretary.  
Meets first and fourth Friday of each  
month in Masonic Hall.

**PIONEERS OF THE PACIFIC—WIL-  
liam Martin Encampment, No. 1. Meets**  
every Wednesday at Hendrick's Hall. Mrs.  
L. F. Jamplin, Secretary.

**DAMON LODGE, NO. 4—KNIGHTS OF**  
Pythias. J. S. Nowlin, C. C.; R. W.  
Fletcher, K. of R. S. Meets every Mon-  
day in Secret Society Hall.

**MODERN WOODMEN OF AMERICA—**  
Tutuilla Camp, No. 6399. Meets first  
and third Mondays of each month at Odd  
Fellows' Hall. George A. Hamblin, Con-  
sul; G. A. Robbins, Clerk.

**WOODMEN OF THE WORLD—REGULAR**  
meetings of Pendleton Camp, No. 41, W.  
of W., are held in Secret Society Hall  
every Saturday evening. Visiting neigh-  
bors are always welcome. J. P. Walker,  
Clerk; J. P. Earl, C. C.

### BANKS AND BROKERS.

**FIRST NATIONAL BANK OF ATHENA.**  
Oregon. Capital, \$50,000 surplus and  
profits, \$6000. Interest on time deposits.  
Deals in foreign and domestic exchange.  
Collections promptly attended to. Henry  
C. Adams, president; T. J. Kirk, vice-presi-  
dent; E. L. Barnett, cashier; F. S. Le  
Grow, assistant cashier.

**THE PENDLETON SAVINGS BANK.**  
Pendleton, Oregon. Organized March 1,  
1888; capital, \$50,000, surplus, \$90,000.  
Interest allowed on time deposits. Ex-  
change bought and sold on all principal  
points. Special attention given to col-  
lections. W. J. Furnish, president; J. N.  
Teal, vice-president; T. J. Morris, cashier.

**THE FARMERS' BANK OF WESTON.**  
Weston, Oregon. Does a general banking  
business. Exchange bought and sold.  
Collections promptly attended to. B.  
Jameson, president; Geo. W. Proebstel,  
vice president; J. R. Kilgore, cashier; di-  
rectors, G. A. Hartman, M. M. Johns, T. J.  
Price, G. D. Graw, J. F. Kilgore, Robert  
Jameson, G. W. Proebstel.

### PHOTOGRAFERS.

**W. S. BOWMAN, LEADING PHOTOGR-**  
apher of the city. Harvest views. In-  
dian photos for sale. Finishing done for  
amateurs. Main St., near bridge. Phone  
Red 276.

### MISCELLANEOUS.

**RUBBER STAMPS OF ALL KINDS SEND**  
for catalogue. Ferney's Stamp Works,  
Walla Walla, Wash.

**EMPLOYMENT BUREAU—IF YOU ARE**  
seeking a position, or need help, call on  
or address J. C. Spoonamore, 220 Court St.,  
Pendleton, Oregon.

**SUBSCRIBERS TO MAGAZINES, IF YOU**  
want to subscribe to magazines or news-  
papers in the United States or Europe,  
remit by postal note, check, or send to  
EAST OREGONIAN, the net publisher's  
price of the publication you desire, and we  
will have it sent you and assume all the  
risk of the money being lost in the mails.  
It will save you both trouble and risk. If  
you are a subscriber to the East Oregonian,  
in remitting you can deduct 10 per cent  
from the publisher's price. Address  
EAST OREGONIAN PUB. CO., Pendleton,  
Oregon.

### NOTICE TO CONTRACTORS.

Notice is hereby given that bids will be re-  
ceived by the County Clerk of Umatilla county,  
Oregon, on or before 10 o'clock, A. M., July 5th,  
1922, for repairs to circuit court room of the  
county court house, in accordance with plans  
and specifications prepared by T. F. Howard,  
architect, and on file at county clerk's office.  
A deposit of five per cent of the amount of the  
bid will be required of each bidder, to be for-  
feited to Umatilla county if the successful  
bidder fails to enter into contract as required  
by the county court of said county.  
The court reserves the right to reject any and  
all bids.  
By order of County Court,  
W. D. CHAMBERLAIN, Clerk.

### NOTICE.—BIDS FOR WOOD FOR UMA- TILLA COUNTY.

Notice is hereby given that bids will be re-  
ceived by the County Clerk of Umatilla county  
up to 12 o'clock, M., on July 5th, 1922, for  
furnishing 130 cords of sound four foot fir wood,  
cut from green timber; 30 cords to be delivered  
at the county court house, and 40 cords to be  
delivered at the county hospital; said wood to  
be delivered on or before November 1st, 1922.  
The Court reserves the right to reject any and  
all bids.  
By order of the County Court,  
W. D. CHAMBERLAIN, Clerk.

### CALL FOR COUNTY WARRANTS.

All Umatilla county warrants registered in  
January and February, 1921, will be paid at  
my office at the court house upon presentation.  
Interest ceases on date of publication.  
Pendleton, Oregon, June 15, 1922.  
S. E. YATES  
Treasurer of Umatilla County.



"If you love her as you say you do why don't you sail in and win her?"  
"Afraid I couldn't raise the wind."

## COMMERCE—TRADE

### Local Market Prices.

The following shows the prices paid on the local market:  
Strawberries, 81-3c per box.  
Parsnips, 75c per sack.  
Cabbage, 4c per pound.  
Cheese, per pound, 20c.  
Onions, per cwt, \$1.50 to \$2.  
Green onions, 25c doz.  
Beets, per lb, 1 1/4c.  
New Potatoes, 4c per pound.  
Potatoes, per cwt, \$1.50 to \$1.75.  
Garlic 1 1/2 c per lb.

### Pendleton Live Stock and Poultry.

Chickens, hens, per doz., \$3.50 to \$4.  
Roosters, \$3.50 to \$4.  
Turkeys, per lb., 10c.  
Geese, per doz., \$9.  
Spring chickens, per doz., \$3.50.  
Pigeons, per doz., \$3.75.  
Eggs, 15c in trade.  
Butter, 25c and 60c per roll.

### Choice Beef Cattle, Etc.

Cows, per hundred, \$3.10.  
Steers, \$4.25 to \$4.50.  
Hogs, live, 5c.  
Hogs, dressed, 6c.  
Calves, dressed, 7 to 8c.

### Pendleton Retail Grocery Prices.

Sugar—Cane granulated, best,  
\$5.25 per sack; do., 16 lbs, \$1.  
Coffee—Mocha and Java, best, 40c  
per lb; next grade, 35c per lb., lower  
grades coffee, 25c to 15c per lb;  
package coffee, 15c lb.  
Rice—Best head rice, 12 1/2c per lb;  
next grade, 1-3c per lb.  
Salt—Coarse, 80c per 100; table  
\$2.20 per 100.  
Flour, B. B. \$3.25 per bbl.  
Flour, Walter's \$3.25 per bbl.

### Skins, Hides, Pelts.

Portland, June 16.—Sheepskins—  
Shearlings, 15 to 20c; short wool, 25 to  
35c; medium wool, 30 to 60c; long  
wool, 60c to \$1 each.  
Hides—Dry hides, No. 1, 16 pounds  
and up, 15 to 15 1/2c per pound; dry kip,  
No. 1, 5 to 15 pounds, 12c; dry calf,  
No. 1, under 5 pounds, 10c; dry salted  
bulls and stags, one-third less than  
dry flint; salted hides, steers, sound,  
60 pounds and over, 8 to 9c; 50 to 60  
pounds, 7 1/2 to 8c; under 50 pounds  
and cows, 7c; stags and bulls, sound,  
5 to 5 1/2c; kip, sound, 15 to 20 pounds,  
7c; veal, sound, 10 to 14 pounds, 7c;  
calf, sound, under 10 pounds, 8c;  
green, (unsalted), 1c per pound less;  
culls, 1c per pound less; horse hides,  
salted, each, \$1.50 to \$2; dry, each, \$1 to  
1.50; colts' hides, each, 25 to 50c; goat  
skins, common, each, 10 to 15c; Angora,  
with wool on, each, 25c to \$1.  
Pelts—Bear skins as to size, No. 1,  
each, \$5 to \$20; cubs, \$2 to \$5; badger,  
each, 10 to 40c; wildcat, 25 to 50c; house  
cat, 5 to 10c; fox, common gray, each,  
30 to 50c; do red, each, \$1.50 to \$2; do  
cross, each, \$5 to \$15; do silver and  
black, each, \$100 to \$200; fisher, each,  
\$5 to \$6; lynx, each, \$2 to \$3; mink, strictly  
No. 1, each, 50c to \$1.50; martens,  
pale pink, according to size and color,  
\$1.50 to \$2; muskrats, large, each, 5 to  
10c; skunk, each, 40 to 50c; civet or  
polecat, each, 5 to 10c; otter, for large  
prime skins, each, \$5 to \$7; panther,  
with head and claws perfect, each,  
\$2 to \$3; raccoon, for large prime, each,  
30 to 50c; wolf, mountain, with head  
perfect, each, \$3.50 to \$5; wolf, prairie,  
(coyote), without head, each, 50 to  
80c; wolverine, each, \$4 to \$7; beaver,

per skin, large, \$5 to \$6; do medium, \$3  
to \$4; do small, \$1 to \$1.50; do kits, 50 to  
75c.

### Most Effective Advertising.

That advertising is the most effective  
which attracts the eye and ap-  
peals to the brain. Strong adjectives  
may be as much out of taste in an  
advertisement as in a bit of more  
aspirating literature. Exaggeration is  
always to be avoided. People now-a-  
days demand sincerity in all matters  
of business. It is observable that all  
the big and successful advertisers are  
most careful as to their statements  
of fact. They realize that confidence  
is the key-stone in the arch of trade.  
Their success came of their jealous  
regard for their work

### O. R. & N. EXCURSION.

Low Rates in Effect to Various Re-  
sorts, Attractive for Pendleton Peo-  
ple.

Bingham Warm Springs—Sixty  
day tickets, \$1.75; two-day tickets,  
including three meals at the hotel  
and one bath at the springs, \$2.75.  
These rates are for round trip and  
include stage fare between Bingham  
Station and the Springs.  
Hot Lake—Round trip, \$3.30, tick-  
ets limited 30 days. On sale all the  
year round.  
Mecham and return—Sundays  
only, until September 30, \$1.00.  
Tickets good date of sale only.  
Long Beach or Clatsop Beach—  
Round trip, \$10.00. Dates of sale,  
July 1 to August 25, inclusive. Tick-  
ets good until September 30. No  
stop over. Boat or rail between As-  
toria and Portland.

Yellowstone National Park and re-  
turn—Via Monida, Montana, \$70.  
Routs via O. R. & N. to Huntington,  
O. S. L. to Mondit, stage transporta-  
tion through the park via Dwelles,  
Lower Geyser Basin, Fountain Hotel,  
Upper Geyser Basin Hotel, Yellow-  
stone Lake, Lake Hotel, Grand Can-  
non, Falls of the Yellowstone, Grand  
Cannon Hotel, Norris Geyser Basin,  
Dwelles, Munda, O. S. L. and O. R.  
& N. Sixty day limit.  
San Francisco and return—Sixty-  
day limit; dates of sale July 23, Aug.  
3, 5, 6, and 7. Rates from Pendleton  
via rail in both directions from Por-  
tland, or via steamer in one direction  
and rail the other, \$31.85; via  
steamer in both directions from  
Portland, \$20.85.  
Denver and return—June 22 and  
23 only, \$42.00. Tickets good until  
July 31. Stopovers allowed on re-  
turn trip.

### How's This.

We offer One Hundred Dollars Reward  
for any case of Catarrh that cannot be  
cured by Hall's Catarrh Cure.  
E. J. CHENEY & CO., Toledo, O.  
We, the undersigned, have known E. J.  
Cheney for the past 15 years, and believe  
him to be perfectly honorable in all busi-  
ness transactions and financially able to  
carry out any obligations made by their  
firm.  
WEST & TRUAX, Wholesale Druggists,  
Toledo, O.  
WALDING, KINNAN & MARVIN,  
Wholesale Druggists, Toledo, O.  
Hall's Catarrh Cure is taken internally,  
acting directly upon the blood and mucous  
surface of the system. Testimonials sent  
free. Price 75c per bottle. Sold by all  
Druggists.  
Hall's Family Pills are the best.

The platform of the democratic  
state convention as adopted at  
Springfield, Ill., on Tuesday, falls  
specifically indorse the Kansas City  
platform. It indorses, rather, the  
constitution and declaration of inde-  
pendence.

McReynold's creamery butter on  
sale in all stores. As: for it.

## Classified Advertisements

COUNT SIX AVERAGE WORDS TO THE LINE.

TWO LINES.		THREE LINES.	
1 time	15c	1 time	20c
2 times	20c	2 times	30c
1 week	30c	1 week	45c

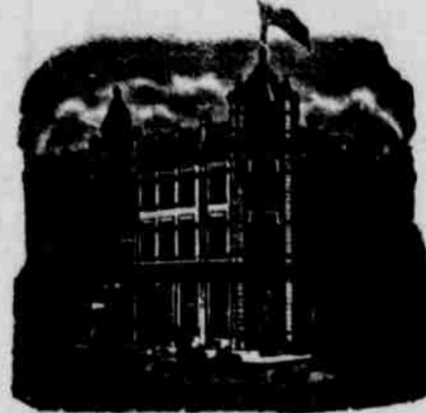
Extra lines: .10 cents each a week; 25 cents a line per month.

### HOTELS.

## HOTEL PENDLETON

VAN DRAN BROS., Props.

The Best Hotel in Pendleton  
and as good as any.



Headquarters for Traveling Men.  
Commodious Sample Rooms.

Rates \$2 per day.

Special rates by week or month.  
Excellent Cuisine,  
Every Modern Convenience.

Bar and Billiard Room in Connection

Only Three Blocks from Depot.

## GOLDEN RULE HOTEL.

Corner Court and Johnson Streets,  
Pendleton, Oregon,  
M. F. Kelly, Proprietor.



HEATED BY STEAM.  
LIGHTED BY ELECTRICITY

American Plan, rates \$1.25 to \$2.00 a day.  
European plan, 50c, 75c, \$1.00  
Special rates by week or month

Free Bus Fares all Trains.  
Commercial Trade Solicited.  
Fine Sample Rooms

Special attention given Country Trade

## Hotel St. George



Geo. Darveau, Prop.

Elegantly Furnished  
Steam Heated

European Plan.  
Block and a half from depot.  
Sample Room in connection.

Room Rate 50c, 75c, \$1.00

## Farmers Custom Mill

Fred Walters, Proprietor

Capacity 150 barrels a day.  
Flour exchanged for wheat  
Flour, Mill Feed, Chopped Feed, etc.  
always on hand.

### TRANSPORTATION LINES.



DEPART FOR	Time Schedule From Pendleton	ARRIVE FROM
Chicago, Portland, Astoria, 3:30 p. m. via Hunt-ington.	Salt Lake, Denver, Ft. Worth, Omaha, Kansas City, St. Louis, Chicago and East.	8:00 a. m.
Atlantic Express, 5:15 a. m. via Hunt-ington.	Salt Lake, Denver, Ft. Worth, Omaha, Kansas City, St. Louis, Chicago and East.	11:10 p. m.
St. Paul Fast Mail, 8:15 a. m. via Spokane.	Walla Walla, Lewiston, Spokane, Wallace, Pullman, Minneapolis, St. Paul, Duluth, Milwaukee, Chicago and East.	5:30 p. m.

### Ocean and River Schedule.

FROM PORTLAND.		
	All sailing dates subject to change. For San Francisco call every 5 days.	4 p. m.
8:00 p. m.	Daily except Sunday 8 p. m. Saturday 10 p. m.	Columbia River To Astoria and Way Landings. 4 p. m. Sunday
	Willamette River. Boats leave Portland daily, except Sunday, (stage of water permitting) for Willamette and Yamhill River points.	
Leave Riparia 4:00 a. m. Daily Except Mon	Snake River Riparia to Lewiston.	Leave Lewiston 7:00 a. m. Daily Except Mon

F. F. WAMBLEY, Agent, Pendleton.



### RUNS

Pullman Sleeping Cars  
Elegant Dining Cars,  
Tourist Sleeping Cars

ST. PAUL  
MINNEAPOLIS  
DULUTH  
FARGO  
GRAND FORKS  
CROOKSTON  
WINNEPEG  
HELENA and  
BUTTE

### THROUGH TICKETS TO

CHICAGO  
WASHINGTON  
PHILADELPHIA  
NEW YORK  
BOSTON

and all points East and South  
Through tickets to Japan and China, via  
Tacoma and Northern Pacific Steamship Co.  
and American Line.

### TIME SCHEDULE.

Trains leave Pendleton daily except Sundays  
at 7:30 p. m.  
For further information, time cards, maps,  
and tickets, call on or write W. Adams, Pen-  
dleton, Oregon, or A. D. CHARLTON,  
Third and Morrison Sts., Portland, Ore.

## Washington & Columbia River Railroad

Take this route for

For Chicago, St. Paul, St. Louis, Kan-  
sas City, St. Joe, Omaha, and

### All Points East and South

Portland and points  
on the Sound

### TIME CARD.

Leave Pendleton, daily except Sundays at  
7:30 p. m.  
Arrive Pendleton Monday, Wednesday and  
Friday 12:30 p. m.  
Arrive Pendleton Tuesday, Thursday and  
Saturday 10:30 a. m.  
Leave Walla Walla daily, east bound 1:30 p. m.  
Arrive Walla Walla daily west bound 11:30 a. m.  
For information regarding rates and accom-  
modations, call on or address  
W. ADAMS, Agent,  
Pendleton, Oregon  
S. B. CALDERHEAD, S. P. A.,  
Walla Walla, Wash.

### CHICHESTER'S ENGLISH

**PENNYROYAL PILLS**  
SAFE, SURE, RELIABLE. London and Bristol  
Druggists. CHICHESTER'S ENGLISH  
PILLS are a field of unbroken success, and  
are the only pills that have ever been  
issued. Take no other. Beware  
of cheap imitations and inferior  
preparations. For particulars, testimonials  
and full list of druggists, call on or  
write to  
J. B. CHICHESTER, Druggist,  
10, Cross Street, Manchester, England.  
Medicine Dealers, Philadelphia, Pa.