

# Business Cards and Societies

PROFESSIONS AND TRADES ALPHABETICALLY ARRANGED.

## PHYSICIANS.

**COLE, OFFICE IN JUDD**  
Office hours, 10 to 12 a. m.;  
Telephone, 77.

**M. D. DESPAIN BLOCK,**  
Specialties eye troubles, cataracts  
and impaired hearing.  
Correctly fitted for refractive errors.

**SMITH, OFFICE OVER THE**  
Savings bank. Telephone 80;  
Telephone 81.

**WHEELER, M. D., HOMEOPATHIC**  
Office in  
Telephone: Office, black  
black 24.

**WAM HOUSE, PHYSICIAN AND**  
Office room 20, Judd building,  
72. Residence Phone Red 23.

**WHEAT, ROOM 17 ASSOCIATION**  
Telephone Main 93; resi-  
dence, black 161.

**HENDERSON, PHYSICIAN**  
Specialties eye, ear, nose  
and throat. Office in Savings Bank build-  
ing Main 33.

**PHYSICIANS, DRs.**  
Office one block west  
of depot.

**W. K. BLAKESLEE, CHRONIC**  
diseases and diseases of wo-  
men. Hotel Pendleton, cor. Water  
St., Pendleton, Ore. Phone  
black 161.

## FRATERNAL ORDERS.

**ROYAL NEIGHBORS OF AMERICA—**  
Widwood Camp, No. 2333, meets second  
and fourth Tuesday of each month in Odd  
Fellows' hall. Mrs. Ida Holcomb, Oracle;  
Mrs. Nellie Robbins, Recorder.

**TUTULLA TENT, NO. 27, K. O. T. M.—**  
Meets in Secret Society Hall, second  
and fourth Tuesdays in each month. All  
visiting Sir Knights cordially invited. J.  
S. Kees, Record Keeper; E. D. Estabrook,  
Commander.

**PENDLETON LODGE, NO. 52, A. F. and**  
A. M., meets first and third Mondays of  
each month. Visiting brethren welcome.  
T. J. Tweedy, W. M.; Joe H. Parkes, Sec.

**PENDLETON CHAPTER, NO. 28—T. C.**  
Taylor, H. P., F. F. Wamsley, Secretary.  
Meets first and fourth Friday of each  
month in Masonic Hall.

**PIONEERS OF THE PACIFIC—WIL-**  
Ham Martin Encampment, No. 1. Meets  
every Wednesday at Hendrick's Hall. Mrs.  
L. F. Jamplin, Secretary.

**DAMON LODGE, NO. 4—KNIGHTS OF**  
Pythias. J. E. Nowlin, C. C.; R. W.  
Fletcher, K. of R. S. Meets every Mon-  
day in Secret Society Hall.

**MODERN WOODMEN OF AMERICA—**  
Tutulla Camp, No. 6399. Meets first  
and third Mondays of each month at Odd  
Fellows' Hall. George A. Hamblin, Con-  
sul; G. A. Robbins, Clerk.

**WOODMEN OF THE WORLD—REGULAR**  
meetings of Pendleton Camp, No. 41. W.  
of W., are held in Secret Society Hall  
every Saturday evening. Visiting neigh-  
bors are always welcome. J. P. Walker,  
Clerk; J. P. Earl, C. C.

## HIDES, PELTS AND JUNK.

**YOU CAN GET THE HIGHEST MAR-**  
ket price for your pelts, hides and all  
kinds of junk, such as rubber, brass, cop-  
per, lead, zinc, rags and bottles. Iron of  
all kinds a specialty. You can bring in 50  
cents worth of rags or scrap in \$500  
worth of hides and will be treated in the  
same way. We have come here to stay.  
Give us a call and you will be satisfied. L.  
Shank & Co., office and warehouse next to  
Eastern Hotel, Pendleton, Oregon. Tele-  
phone, Red 221.

## MISCELLANEOUS.

**RUBBER STAMPS OF ALL KINDS SEND**  
for catalogue. Ferney's Stamp Works,  
Walla Walla, Wash.

**IN POUND—THE FOLLOWING DESCRIBED**  
animal has been taken up by the marshal of  
the City of Pendleton, to wit: One gray mare,  
with roached mane and foretop; about 5 years  
old, weight about 900 pounds. Branded with  
"H" on left shoulder. If said animal is not  
claimed by the owner or those entitled to the  
possession of it, costs and expenses against it  
paid and it taken away within ten days from the  
date hereof, then at 2 o'clock p. m. of the 12th  
day of June, 1922, the said animal will be sold  
to the highest bidder, at public auction, for  
cash, at the city pound, on the corner of  
Cottonwood and Webb streets, in said city of  
Pendleton, the proceeds of such sale to be  
applied to the payment of such costs and ex-  
penses of making sale. Dated this 31st day of  
May, 1922. J. A. Blakley, City Marshal.

**IN POUND—THE FOLLOWING DESCRIBED**  
animal has been taken up by the marshal of  
the City of Pendleton, to wit: One black horse,  
about 8 years old; weight about 1,000 pounds;  
a deficient in the right hind leg, sweened on  
the hip and branded "66" on left stifle. If  
said animal is not claimed by the owners  
or those entitled to the possession of it, costs  
and expenses against it paid and it taken away  
within ten days from the date hereof, then at  
2 o'clock p. m. of the 14th day of June, 1922, the  
said animal will be sold to the highest bidder,  
at public auction, for cash, at the city pound,  
on the corner of Cottonwood and Webb streets,  
in said city of Pendleton, the proceeds of such  
sale to be applied to the payment of such costs  
and expenses of making sale. Dated this 3rd  
day of June, 1922. J. A. Blakley, City Marshal.

**KELLAR BROTHERS, PLASTERING**  
and cementing. Cement walks a specialty.  
Estimates furnished free. Work guar-  
anteed. Leave orders at Badley & Zah-  
ner's cigar store. Main St., P. O. box 104.

**DENTISTS.**

**G. A. VAUGHAN, DENTIST, OFFICE IN**  
Judd building.

**E. A. MANN, DENTIST, OFFICE IN AS-**  
SOCIATION block, over Schmidt's new  
drug store.

**CABS AND CARRIAGES.**

**CITY CAB LINE, ERWIN BAKER, PROP.**  
Telephone Main 79. Stand in front of French  
restaurant.



TO THE RESCUE.

## COMMERCE - TRADE

### Local Market Prices.

The following shows the prices paid on the local market:

Strawberries, 12 1/2c per box.  
Parsnips, 75c per sack.  
Cabbage, 4c per pound.  
Cheese, per pound, 20c.  
Onions, per cwt, \$1.50 to \$2.  
Green onions, 25c doz.  
Beets, per lb, 1 1/2c.  
New Potatoes, 4c per pound.  
Potatoes, per cwt, \$1.50 to \$1.75.  
Garlic, 1 1/2c per lb.

### Pendleton Live Stock and Poultry.

Chickens, hens, per doz., \$3.50@4.  
Roosters, \$3.50@4.  
Turkeys, per lb, 10c.  
Geese, per doz., \$9.  
Spring chickens, per doz., \$3.50.  
Ducks, per doz., \$3.75.  
Pigeons, per doz., \$1.50.  
Eggs, 20c in trade.  
Butter, 25c and 60c per roll.

### Choice Beef Cattle, Etc.

Cows, per hundred, \$3.10.  
Steers, \$4.25@4.50.  
Hogs, live, 5c.  
Hogs, dressed, 6c.  
Calves, dressed, 7@8c.

### Pendleton Retail Grocery Prices.

Sugar—Cane granulated, best,  
\$5.25 per sack; do., 16 lbs, \$1.  
Coffee—Mocha and Java, best, 40c  
per lb; next grade, 35c per lb., lower  
grades coffee, 25c to 15c per lb;  
package coffee, 15c lb.  
Rice—Best head rice, 12 1/2c per lb;  
next grade, 1-3c per lb.  
Salt—Coarse, 80c per 100; table  
\$2.20 per 100.  
Flour, B. B. \$3.25 per bbl.  
Flour, Walter's \$3.25 per bbl.

### Skins, Hides, Pelts.

Portland, June 5.—Sheepskins—  
Shearings, 15@20c; short wool, 25@  
35c; medium wool, 30@60c; long  
wool, 60c@1 each.

Hides—Dry hides, No. 1, 16 pounds  
and up, 15@15.2c per pound; dry kip,  
No. 1, 5 to 15 pounds, 12c; dry calf,  
No. 1, under 5 pounds, 10c; dry salt-  
ed bulls and stags, one-third less than  
dry flint; salted hides, steers, sound,  
60 pounds and over, 8@9c; 50 to 60  
pounds, 7 1/2@8c; under 50 pounds  
and cows, 7c; stags and bulls, sound,  
5@5 1/2c; kip, sound, 15 to 20 pounds, 7c;  
veal, sound, 10 to 14 pounds, 7c;  
calf, sound, under 10 pounds, 8c;  
green, (unsalted), 1c per pound less;  
culls, 1c per pound less; horse hides,  
salted, each, \$1.50@2; dry, each, \$1@  
1.50; colts' hides, each, 25@50c; goat  
skins, common, each, 10@15c; Ango-  
ra, with wool on, each, 25c@31.

Pelts—Bear skins as to size, No. 1,  
each, \$5@20; cubs, \$2@5; badger,  
each, 10@40c; wildcat, 25@50c; house  
cat, 5@10c; fox, common gray, each,  
30@50c; do red, each, \$1.50@2; do  
cross, each, \$5@15; do silver and  
black, each, \$100@200; fisher, each,  
\$5@6; lynx, each, \$2@3; mink, strict-  
ly No. 1, each, 50c@1.50; marten,  
pale pink, according to size and color,  
\$1.50@2; muskrats, large, each, 5@  
10c; skunk, each, 40@50c; civet or  
polecat, each, 5@10c; otter, for large  
prime skins, each, \$5@7; panther,  
with head and claws perfect, each,  
\$2@3; raccoon, for large prime, each,  
30@50c; wolf, mountain, with head  
perfect, each, \$3.50@5; wolf, prairie,  
(coyote), without head, each, 50@  
80c; wolverine, each, \$4@7; beaver,  
per skin, large, \$5@6; do medium, \$3  
@4; do small, \$1@1.50; do kits, 50@  
75c.

## HORSE SHIPMENTS.

Fifteen Cars of Range Horses Went East Yesterday.

Hamilton Campbell, traveling freight agent of the O. R. & N. branch from Walla Walla to Spokane, was in the city last evening on his way home from a trip to Kahlotus, Wash., where he went to superintend the loading and shipment of 15 cars of range horses to Sioux City, Iowa. This is the first shipment made from the Kahlotus-Connell district, and Mr. Campbell says it is the beginning of a heavy traffic which he expects to see grow up there.

The country around Kahlotus, which is at the extreme end of the Connell division, is peculiarly adapted to horse raising and thousands of the animals are running wild on the range near there. The present shipment consisted of 15 cars, of which 11 cars were destined by Coffin & Connell to themselves, and the balance was sent out by W. W. Savage and others to Thuet Brothers, heavy stock commission dealers.

In anticipation of a heavy traffic in horses out of the Kahlotus country, the O. R. & N. has built fine corrals and loading yards there. Mr. Campbell says the country around Kahlotus and Connell is settling up rapidly and he expects to see much business come out over the Connell division.



## The Columbia Lodging House

NEWLY FURNISHED BAR IN CONNECTION IN CENTER OF BLOCK BET. ALTA & WEBB STS

F. X. SCHEMPP, Prop.

## LUMBER

Gray's Harbor Com. Co.

SUCCESSORS TO - A. C. SHAW & CO.

Being one of the largest manufacturing plants on Puget sound are able to sell you lumber cheaper than anyone else. New lumber coming in every day. They also make all kinds of boxes, including Apple, Pear, Peach, Cherry, and Plumb and berry crates, and are prepared to make you prices either in small lots or

BY THE CAR LOAD

## Classified Advertisements

COUNT SIX AVERAGE WORDS TO THE LINE.

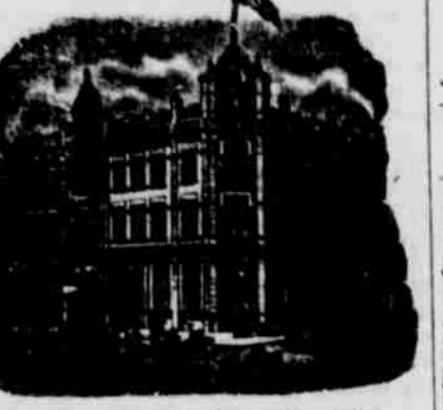
TWO LINES.		THREE LINES.	
1 time	.....15c	1 time	.....20c
2 times	.....20c	2 times	.....30c
1 week	.....30c	1 week	.....45c

Extra lines: .10 cents each a week; 25 cents a line per month.

## HOTELS.

### HOTEL PENDLETON

VAN DRAN BROS., Props.  
The Best Hotel in Pendleton  
and as good as any.



Headquarters for Traveling Men.  
Commodious Sample Rooms.

Rates \$2 per day.

Special rates by week or month.  
Excellent Cuisine,  
Every Modern Convenience.

Bar and Billiard Room in Connection  
Only Three Blocks from Depot.

## GOLDEN RULE HOTEL.

Corner Court and Johnson Streets,  
Pendleton, Oregon,  
M. F. Kelly, Proprietor.



HEATED BY STEAM.  
LIGHTED BY ELECTRICITY

American Plan, rates \$1.25 to \$2.00 a day.  
European plan, 50c, 75c, \$1.00  
Special rates by week or month

Free Bus Route all Trains.  
Commercial Trade Solicited.  
Fine Sample Rooms

Special attention given Country Trade

## Hotel St. George



GEO. DARVEAU, Prop.

Elegantly Furnished  
Steam Heated

European Plan  
Block and a half from depot.  
Sample Room in connection.

Room Rate 50c, 75c, \$1.00

## Farmers Custom Mill

Fred Walters, Proprietor  
Capacity 150 barrels a day  
Flour exchanged for wheat  
Flour, Mill Feed, Chopped Feed, etc.  
always on hand.

## TRANSPORTATION LINES.

DEPART FOR	Time Schedule From Pendleton	ARRIVE FROM
Chicago, Portland Special 5:30 p. m. via Huntington.	Salt Lake, Denver, Ft. Worth, Omaha, Kansas City, St. Louis, Chicago and East.	8:00 a. m.
Atlantic Express 5:45 a. m. via Huntington.	Salt Lake, Denver, Ft. Worth, Omaha, Kansas City, St. Louis, Chicago and East.	11:30 p. m.
St. Paul Fast Mail 8:15 a. m. via Spokane.	Walla Walla, Lewiston, Spokane, Wallace, Pullman, Minneapolis, St. Paul, Duluth, Milwaukee, Chicago and East.	5:30 p. m.

## Ocean and River Schedule.

FROM PORTLAND.		
8:00 p. m.	All sailing dates subject to change. For San Francisco sail every 5 days.	4 p. m.
Daily except Sunday 8 p. m. Saturday 10 p. m.	Columbia River To Astoria and Way-Landing.	4 p. m. Sunday
Willamette River		
Boats leave Portland daily, except Sunday (stage of water permitting); for Willamette and Yamhill River points.		
Leave Riparia 4:35 a. m. Daily Except Mon.	Snake River Riparia to Lewiston.	Leave Lewiston 7:00 a. m. Daily Except Mon.



Pullman Sleeping Cars  
Elegant Dining Cars,  
Tourist Sleeping Cars

ST. PAUL  
MINNEAPOLIS  
DULUTH  
FARGO  
GRAND FORKS  
CROOKSTON  
WINNEPEG  
HELENA and BUTTE.

## THROUGH TICKETS TO

CHICAGO  
WASHINGTON  
PHILADELPHIA  
NEW YORK  
BOSTON

and all points East and South

Through tickets to Japan and China, via Tacoma and Northern Pacific Steamship Co. and American line.

## Washington & Columbia River Railroad

Take this route for

For Chicago, St. Paul, St. Louis, Kansas City, St. Joe, Omaha, and

All Points East and South

Portland and points on the Sound

TIME CARD.

Leave Pendleton, daily except Sundays at 7:30 p. m.  
Arrive Pendleton Monday, Wednesday and Friday 10:30 p. m.  
Arrive Pendleton Tuesday, Thursday and Saturday 10:30 a. m.

Leave Walla Walla daily, east bound 8:00 p. m.  
Arrive Walla Walla daily west bound 10:00 a. m.  
For information regarding rates and accommodations, call on or address  
W. ADAMS, Agent, Pendleton, Oregon

S. B. CALDERHEAD, G. P. A., Walla Walla, Wash.

The East Oregonian is Eastern Oregon's representative paper. It is read, and the people appreciate it and show it by their liberal patronage. It is the advertising medium of the section.

# Fishing Season!

Now is the time to land the finny tribe. Let us supply with an outfit. We have the most complete stock.

Bamboo Poles, \$1.00 and up. Reels, 20c to \$6.00.

All grades and kinds of flies at lowest prices. Baskets and Straps all sizes.

## T. C. TAYLOR THE HARDWARE MAN

## FRAZIER'S STABLES

ATTENTION!

WHEELER, record 2:22 1-2, will make the season at FROOME'S STABLE, PENDLETON, every day in the week, except Wednesday and Thursday. At 1:30 on Wednesday and Thursday of each week.

TERMS: For the season, \$18; to insure, \$25.

WAM, Clydesdale, will make the season at FROOME'S STABLE, PENDLETON, every day in the week, except Monday and Tuesday; at 1:30 on Monday and Tuesday of each week.

TERMS: For the season, \$12; to insure, \$15.

Further information address  
**FRANK FRAZIER, Pendleton, Oregon**