

Business Cards and Societies

PROFESSIONS AND TRADES ALPHABETICALLY ARRANGED.

PHYSICIANS.

DR. W. G. COLE, OFFICE IN JUDD building. Office hours, 10 to 12 a. m.; 1 to 5 p. m. Telephone, 77.

J. L. MILLER, M. D., DESPAIN BLOCK. Treats and corrects eye troubles, cataracts and impaired hearing. Glasses correctly fitted for refractive errors.

DR. C. J. SMITH, OFFICE OVER THE Pendleton Savings bank. Telephone 30; residence telephone 31.

H. S. GARFIELD, M. D., HOMEOPATH. Physician and Surgeon. Office in Judd building. Telephone: Office, black 75; residence, black 24.

DR. WILLIAM HOUSE, PHYSICIAN AND Surgeon. Office, room 20, Judd building. Phone, Main 72. Residence Phone Red 23.

DR. D. J. McFAUL, ROOM 17 ASSOCIATION block. Telephone Main 93; residence telephone, black 161.

DR. T. M. HENDERSON, PHYSICIAN and Surgeon. Specialties eye, ear, nose and throat. Office in Savings Bank building. Phone Main 33.

HOMEOPATHIC PHYSICIANS, DRs. Erge & Keyes. Office one block west of Boston Store.

DR. LYNN K. BLAKESLEE, CHRONIC and nervous diseases and diseases of women. Opp Hotel Pendleton, cor. Water and Main Sts., Pendleton, Ore. Phone Red 273.

DENTISTS.

H. A. VAUGHAN, DENTIST, OFFICE IN Judd building.

H. A. MANN, DENTIST, OFFICE IN ASSOCIATION block, over Schmidt's new drug store.

ARCHITECTS AND BUILDERS.

T. F. HOWARD, ARCHITECT AND SUPERINTENDENT, makes complete and reliable plans for buildings in the city or country. Room 17 Judd building.

BRECK & COLE, CONTRACTORS AND BUILDERS. Estimates furnished on short notice. Job work a specialty. Prompt service. Shop on Bluff street near Main.

D. A. MAY, CONTRACTOR AND BUILDERS. Estimates furnished on all kinds of masonry, cement walks, stone walls, etc. Orders can be left at the East Oregonian office.

LIVERY AND FEED STABLES.

COMMERCIAL STABLES, G. W. FROOME. Prop. Livery, Feed and Boarding. All kinds of turnouts. Competent drivers. Opposite Hotel Pendleton, telephone 16.

DEPOT LIVERY FEED AND SALES STABLES. First class single and double rigs for all occasions. 627 Cottonwood St. Phone Main 79. Elvin Craig, Prop.

STABLES, T. W. AYERS, PROP. Livery, feed and boarding. The best turnouts in the city. Alta St., between Main and Cottonwood Sts., Phone Main 70.

ORIGON FEED YARD, W. T. BOYNTON. Prop. Special care given to horses left with me. Lower Webb Street. Phone Red 24.

CABS AND CARRIAGES.

CITY CAB LINE, ERWIN BAKER, PROP. Telephone Main 79, at the Depot Livery Stables.

SECOND-HAND DEALERS.

GEORGE O'DANIEL, NEW AND SECOND hand goods bought and sold. Court St., Opera house block. Call and see him.

V. STROBLE, DEALER IN SECOND hand goods. If there is anything you need in new or second hand furniture, stoves, granite ware and crockery, call and get his prices. No. 212 Court St.

ELECTRICAL SUPPLIES.

MAPLE BROS., COURT STREET, LA. Dow block. Electricians, dealers in electrical supplies. Houses, stores, wired for electric lights, bells or telephones. Electrical fixtures of all kinds. Get our prices. Repair work a specialty.

ORIGON ELECTRICAL WORKS, C. F. KINE Prop. Corner Main and Webb streets. House and bell wiring neatly and promptly done. Give us a trial. All work guaranteed. Phone Red 403. C. F. Kine, prop.

BANKS AND BROKERS.

FIRST NATIONAL BANK OF ATHENA, Oregon. Capital, \$50,000 surplus and profits, \$6000. Interest on time deposits. Collections in foreign and domestic exchange. Collections promptly attended to. Henry C. Adams, president; T. J. Kirk, vice-president; E. L. Barnett, cashier; F. S. LeGrow, assistant cashier.

THE PENDLETON SAVINGS BANK, Pendleton, Oregon. Organized March 1, 1889; capital, \$50,000, surplus, \$90,000. Interest allowed on all principal. Exchange bought and sold on all principal points. Special attention given to collections. W. J. Furnish, president; J. N. Neal, vice-president; T. J. Morris, cashier.

THE FARMERS' BANK OF WESTON, Weston, Oregon. Does a general banking business. Exchange bought and sold. Collections promptly attended to. R. Jameson, president; Geo. W. Proebstel, vice-president; H. R. Kilgore, cashier; directors, G. A. Hartman, M. M. Johns, T. J. Price, G. D. Gray, J. P. Kilgore, Robert Jameson, G. W. Proebstel.

FIRST NATIONAL BANK OF PENDLETON, Oregon. Capital, \$50,000; surplus, \$95,000. Does a general banking business. Exchange and telegraphic transfers sold on principal points in the northwest. Drafts drawn on China, Japan and Europe. Makes loans on reasonable terms. Levi Anderson, president; W. F. Matlock, vice-president; C. E. Wade, cashier; H. C. Guernsey, assistant cashier.

HIDES, PELTS AND JUNK.

YOU CAN GET THE HIGHEST MARKET prices for your pelts, hides and all kinds of junk, such as rubber, brass, copal, lead, zinc, tin, and bottles. Iron of all kinds a specialty. You can bring in 50 cents worth of rags or ship in \$500 worth of hides and will be treated in the same way. We have come here to stay. Give us a call and you will be satisfied. L. S. Co. office and warehouse next to Eastern Hotel, Pendleton, Oregon. Telephone, Red 221.

FOR SALE.

FOR SALE AT THE EAST OREGONIAN office, large bundles of newspapers, containing over 100 big papers can be obtained for 25 cents a bundle.

FOR SALE — NEW CHICAGO TYPE-writer, universal key-board, first-class machine. Take a look at it. Thirty dollars will buy it. East Oregonian office.

FOR SALE — GASOLINE ENGINE, WITH pipes, tanks and fittings, ready to operate, five to six horse power. Economical in the use of fuel. Price \$250. East Oregonian office, Pendleton.

ATTORNEYS.

CARTER AND RALEY, ATTORNEYS AT LAW. Office in Savings Bank building.

BEAN & LOWELL, ATTORNEYS AT LAW. Room 14 Association block. Pendleton, Oregon.

N. BERKELEY, ATTORNEY AT LAW. Office in Association block.

E. D. BOYD, ATTORNEY AT LAW, 111 Court Street.

L. B. REEDER, ATTORNEY AT LAW, Pendleton, Oregon.

JAMES A. FEE, LAW OFFICE IN JUDD Building.

STILLMAN & PIERCE, ATTORNEYS at Law. Mr. Stillman has been admitted to practice in United States patent office and makes a specialty of Patent Law. Rooms 10, 11, 12 and 13 Association block.

FRATERNAL ORDERS.

ROYAL NEIGHBORS OF AMERICA — Wildwood Camp, No. 2333, meets second and fourth Monday in each month in Odd Fellows' hall. Mrs. Ida Holcomb, Oracle; Mrs. Ne...e Robbins, Recorder.

UMATILLA TENT, NO. 27, K. O. T. M. — Meets in Secret Society Hall, second and fourth Tuesdays in each month. All visiting Sir Knights cordially invited. J. S. Kees, Record Keeper; E. D. Estabrook, Commander.

PENDLETON LODGE, NO. 52, A. F. and A. M. meets first and third Mondays of each month. Visiting brethren welcome. T. J. Tweedy, W. M.; Joe H. Parkes, Sec.

PENDLETON CHAPTER, NO. 28 — T. C. Taylor, H. P.; F. F. Wamsley, Secretary. Meets first and fourth Friday of each month in Masonic Hall.

PIONEERS OF THE PACIFIC — WILLIAM Martin Encampment, No. 1. Meets every Wednesday at Hendrick's Hall. Mrs. L. F. Lamplin, Secretary.

DAMON LODGE, NO. 4 — KNIGHTS OF Pythias. J. E. Nowlin, C. C.; R. W. Fletcher, K. of R. S. Meets every Monday in Secret Society Hall.

MODERN WOODMEN OF AMERICA — Tutuilla Camp, No. 6399. Meets first and third Mondays of each month at Odd Fellows' Hall. George A. Hamblin, Consul; G. A. Robbins, Clerk.

WOODMEN OF THE WORLD — REGULAR meetings of Pendleton Camp, No. 41, W. of W., are held in Secret Society Hall every Saturday evening. Visiting neighbors are always welcome. J. P. Walker, Clerk; J. P. Earl, C. C.

MISCELLANEOUS.

WANTED ADVERTISERS TO MAKE USE of these classified columns. If you have something you have no use for, offer to trade it for something that some other body may have and have no use for, something that you may need in your business. You may have an extra horse that you may wish to trade for a cow or a vehicle. Somebody may have the cow and vehicle and want the horse. A fifteen or twenty-five cent want ad will probably do the business.

OLD NEWSPAPERS — TO PUT UNDER carpets, on shelves, walls, or for wrapping purposes. Old newspapers in large bundles of 100 each at 25 cents at bundle at the EAST OREGONIAN office, Pendleton, Oregon.

KELLAR BROTHERS, PLASTERING and cementing. Cement walks a specialty. Estimates furnished free. Work guaranteed. Leave orders at Badley & Zahner's cigar store, Main St., P. O. box 104.

IN FOUND.

The following described animal has been taken up by the marshal of the City of Pendleton, to-wit:

A bald face roan colt, one year old, with white legs up to the knees, No brand visible. If said animal is not claimed by the owners or those entitled to the possession of it, costs and expenses against it paid and it taken away within ten days from the date hereof, then at 2 o'clock, p. m. of the 12th day of May, 1921, the said animal will be sold to the highest bidder, at public auction, for cash, at the city pound, on the corner of Cottonwood and Webb streets, in said city of Pendleton, the proceeds of such sale to be applied to the payment of such costs and expenses of making sale.

Dated this 1st day of May, 1921.

J. A. BLAKLEY, City Marshal.

PHOTOGRAPHERS.

W. S. BOWMAN, LEADING PHOTOGRAPHER of the city. Harvest views, Indian photos for sale. Finishing done for amateurs. Main St., near bridge. Phone Red 276.

WOOD! COAL!

WOOD! COAL!

WOOD! COAL!

W. C. MINNIS

SELLS BOTH.

Kemerer Coal. First Class Wood

Orders Promptly Filled.

Telephone, Red 401, or call on

W. C. MINNIS,

Office Main Street, just opposite Hance-

ford & Thompson's hardware store.



She—Don't you think a girl is known by the maid she keeps?
He—Thoroughly.

COMMERCE — TRADE

PENDLETON MARKET GLUT-TED WITH BUTTER.

The Wheat Market Shows No Changes Locally—Wool and Live-stock Markets — Portland Wheat Market Review.

Locally there has been little change in markets since last week, although all staple articles, such as groceries, are strong and a few cents may be added at any time. Apples and sweet potatoes have virtually dropped off the market and none can be had now.

Butter remains the same, except inferior classes of country butter. The markets are glutted with this, and some of the grocers are offering to dispose of this class for 25 cents per roll. Last week the lowest figure was 40 cents. Creamery butter remains strong at 60 cents.

The stock market is about the same, although fat beef cattle are becoming very scarce and in several instances better prices than are quoted below have been paid for choice steers. According to one local butcher there is not a carload of fed fat cattle in the county that has not already been engaged by some dealer. Mutton sheep are also scarce, but not so much as cattle. Little advance is looked for, however, in the meat market, for the reason that the local butchers have all their stock engaged ahead and will not run short until range stock will be ready to butcher.

No change is reported in the wheat situation. The price remains at 54 cents, but none is on the market.

Local Market Prices.

The following shows the prices paid on the local market:

Turnips, 75c per sack.
Parsnips, 75c per sack.
Cabbage, 4c lb.
Cheese, per lb., 20c.
Onions, per cwt., \$1.50 to \$2.
Green onions, 25c doz.
Beets, per lb., 1 1/2c.
Potatoes, per cwt., \$1.50@1.75.
Horse radish, 12 1/2c lb.
G-luck, 12 1/2c lb.
Sauer Kraut, 40c per gallon.
Pendleton Livestock and Poultry.
Chickens, hens, per doz., \$3.50@4.
Roosters, \$3.50 to \$4.50.
Turkeys, per lb., 10.
Geese, per doz., \$9.
Spring chickens, per doz., \$3.50.
Ducks, per doz., \$3.75.
Pigeons, per doz., \$1.50.
Eggs, 15c in trade.
Butter, 25c and 60c per roll.
Choice bee, cattle, etc.
Cows, per hundred, \$3.10.
Steers, \$4.25@4.50.
Hogs, live, 5c.
Hogs, dressed, 6c.
Calves, dressed, 7 to 8c

Pendleton Retail Grocery Prices.

Sugar—Cane granulated, best, \$5.00 per sack; do., 16 lbs, \$1.
Coffee—Mocha and Java, best, 40c per lb; next grade, 35c lb; lower grades coffee, 25 to 15c lb; package coffee, 15c lb.
Rice—Best head rice, 12 1/2c per lb; next grade, 8 1/2c per lb.
Salt—Coarse, 80c per 100; table, \$2.20 per 100.
Flour, B. B., \$3.40 per bbl.
Flour, Walter's, \$3.40 per bbl.

Review Portland Wheat Market.

Portland, May 8.—The Commercial Review, in its issue of today, says of the wheat market:

Very few chartered vessels are here at Portland. Puget Sound has eight ships on berth either for flour or wheat. Most of the shipments for the remainder of the season will go from Tacoma, as the wheat remaining in the country is tributary to the Sound. Some large lots remaining in the country could be brought to Portland, but holders have very firm ideas as to the value of the same, and the flour mills will have to be good buyers of wheat, as new wheat will not be available before August. Shipments of wheat from Portland and Puget Sound for 10 months of the cereal year are now 25,000,000 bushels, and for the first time in the history of the grain trade Puget Sound exceeds Portland in shipments of that cereal by 468,698 bushels, and before the season closes it will be fully 1,000,000 bushels. This port

has not fallen off in shipments, but the country tributary to Puget Sound has had a wonderful growth and the acreage there has been very large. Portland having no rail connections into this territory, the grain had to be shipped to Tacoma and Seattle. The flour shipments from both Tacoma and Seattle combined have for a number of years been larger than Portland, and this year Tacoma alone has advanced quite rapidly in her shipments of flour. Prices for club wheat are 65@66c per bushel; bluestem, 67c; and valley, 66c; the latter quality now remaining in that territory will all be used up by the flour mills.

Wheat in San Francisco.

San Francisco, May 8.—The wheat trade is quiet. There are only a few vessels in port having charters for present crop loading and these few are meeting with fair dispatch. Wheat offers are very few. Holders continue to offer sparingly and are not willing to make any concessions. Exporters seem to have plenty of grain for loading vessels. Crop advices from all sections of the state show very good improvement, especially along the coast, and the San Joaquin county. No. 1 shipped wheat is quoted at \$1.11 1/4 and milling, \$1.12 1/2@1.15 per cental. Speculative transactions on the call board were light in volume, but there was a development of considerable strength in sympathy with the improvement east.

Eastern Livestock.

Chicago, May 8.—Cattle—Market 10c higher; good to prime steers, \$6.80@7.30; poor to medium, \$4.50@6.75; stockers and feeders, \$2.50@5.30; cows, \$1.40@5.75; heifers, \$2.50@5; canners, \$1.40@2.40; bulls, \$2.50@5.75; calves, \$2@6.35; Texas-fed steers, \$2.25@6.25.
Hogs—Market 5 to 10c lower; mixed and butchers, \$9.15@1.10; good to choice heavy, \$7.10@7.20; rough heavy, \$6.80@7.05; light, \$6.60@6.90; bulk of sales, \$6.80@7.05.
Sheep—Sheep steady; good to choice wethers, \$5.15@6.25; fair to choice mixed, \$4.75@5.60; Western sheep, \$5.25@6.25; native lambs \$5.75@6.00; Western lambs, \$5.20@6.50.

South Omaha, May 8.—Cattle—Receipts 2000. Market active, 5@10c higher. Cows and heifers, \$.75@5.85; Western steers, \$4.75@5.85; Texas steers, \$4.50@5.50; canners, \$1.75@3.25; stockers and feeders, \$3@5.25; calves, \$3@6; bulls, stags, etc., \$2.70@5.60.
Hogs—Market lower. Heavy, \$7@7.18; mixed, \$6.80@7; light, \$6.60@7; pigs, \$5.50@6.60; bulk of sales, \$6.90@7.
Sheep—Market steady. Fed muttons, \$5.50@6.10; Westerns, \$4.25@5.75; ewes, \$4.50@5.50; common and stockers, \$3@5; lambs, \$5.50@7.

London Wool Sales.

London, May 8.—The third series of wool auction sales opened Tuesday with a large number of buyers present. A representative catalogue consisting of 12,658 bales, was offered. Buyers from all parts competed briskly and a general improvement was noted. Merinos and fine cross-breeds were 7 1/2 to 10 per cent higher, coarse, 10 per cent, and Cape of Good Hope and Natal 7 1/2 per cent above the last sales.

Wool in Boston.

Boston, May 8.—There has been no change in the condition of the wool market here this week. The strikes in the woolen mills throughout New England have acted like a blight upon the market, and buyers are using them as a club to depress values. While there has been no quotable change from week to week the tendency has been downward for some time, while the average of quotations is fully a cent lower than the high point touched in January. Territory wools are dull. Choice staples scored are quoted, fine, 50@52c; fine medium, 47@48c; medium, 45c.
The ordinary territory grades are selling on the scored basis of fine, 47@48c; fine medium, 43@45c; fine medium, 38@40c.
Fleece wools have had a fair inquiry, but sales have been very light.
If you fail to register before May 15, you will not have the right to cast a ballot at the June election.

Classified Advertisements

COUNT SIX AVERAGE WORDS TO THE LINE.

TWO LINES.
1 time 15c
2 times 20c
1 week 30c

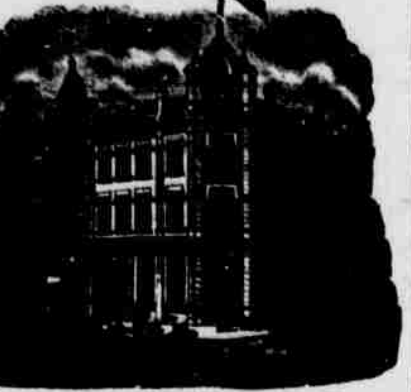
THREE LINES.
1 time 20c
2 times 30c
1 week 45c

Extra lines: .10 cents each a week; 25 cents a line per month.

HOTELS.

HOTEL PENDLETON

VAN DRAN BROS., Props.
The Best Hotel in Pendleton
and as good as any.



Headquarters for Traveling Men.
Commodious Sample Rooms.

Rates \$2 per day.

Special rates by week or month.
Excellent Cuisine,
Every Modern Convenience.

Bar and Billiard Room in Connection

Only Three Blocks from Depot.

GOLDEN RULE HOTEL.

Corner Court and Johnson Streets,
Pendleton, Oregon.
M. F. Kelly, Proprietor.



HEATED BY STEAM.
LIGHTED BY ELECTRICITY.

American Plan, rates \$1.25 to \$2.00 a day.
European plan, 50c, 75c, \$1.00
Special rates by week or month

Free Bus fleets all Trains.
Commercial Trade Solicited.
Fine Sample Rooms

Special attention given Country Trade

Hotel St. George



GEO. DARVEAU, Prop.
Elegantly Furnished
Steam Heated

European Plan.
Block and a half from depot.
Sample Room in connection.
Room Rate - 50c, 75c, \$1.00

Farmers Custom Mill

Fred Walters, Proprietor.
Capacity, 100 barrels a day.
Flour exchanged for wheat
Flour, Mill Feed, Chopped Feed, etc., always on hand.

TRANSPORTATION LINES.



DEPART FOR	Time Schedule From Pendleton	ARRIVE FROM
Chicago Portland Special 5:30 p. m. via Hunt- ington.	Salt Lake, Denver, Ft. Worth, Omaha, Kansas City, St. Louis, Chicago and East.	6:00 a. m.
Atlantic Express 5:45 a. m. via Hunt- ington.	Salt Lake, Denver, Ft. Worth, Omaha, Kansas City, St. Louis, Chicago and East.	11:30 p. m.
St. Paul Fast Mail 8:15 a. m. via Spokane.	Walla Walla, Lewiston, Spokane, Wallace, Pullman, Missoula, St. Paul, Duluth, Milwaukee, Chicago and East.	5:30 p. m.

Ocean and River Schedule.

FROM PORTLAND.		
8:00 p. m.	All sailing dates subject to change. For San Francisco Sail every 5 days.	4 p. m.
Daily except Sunday 8 p. m. Saturday 10 p. m.	Columbia River To Astoria and Way Landings.	4 p. m. Sunday
Willamette River Boats leave Portland daily, except Sunday, (stage of water permitting) for Willamette and Yamhill River points.		
Leave Riparia 4:05 a. m. Daily Except Mon.	Snake River Riparia to Lewiston.	Leave Lewiston 7:30 a. m. Daily Except Mon.



Pullman Sleeping Cars,
Elegant Dining Cars,
Tourist Sleeping Cars

ST. PAUL
MINNEAPOLIS
DULUTH
FARGO
GRAND FORKS
CROOKSTON
WINNEPEG
HELENA and
BUTTE.

THROUGH TICKETS TO

CHICAGO
WASHINGTON
PHILADELPHIA
NEW YORK
BOSTON
and all points East and South

Through tickets to Japan and China, via Tacoma and Northern Pacific Steamship Co. and American line.

Washington & Columbia River Railroad

Take this route for

For Chicago, St. Paul, St. Louis, Kansas City, St. Joe, Omaha, and All Points East and South

Portland and points on the Sound

TIME CARD.
Leave Pendleton, daily except Sundays at 7:30 p. m.
Arrive Pendleton Monday, Wednesday and Friday 12:55 a. m.
Arrive Pendleton Tuesday, Thursday and Saturday 10:55 a. m.
Leave Walla Walla daily, east bound 8:00 p. m. Arrive Walla Walla daily west bound 10:20 a. m.
For information regarding rates and accommodations, call on or address
W. ADAMS, Agent,
Pendleton, Oregon
S. B. CALDERHEAD, G. P. A.,
Walla Walla, Wash.

CURE YOURSELF!
Use Big 4 for unsuited discharges, inflammation, irritations or ulcerations of mucous membranes. Prevents gonorrhea, and acts quickly, gently or painlessly.
Sold by Druggists, or sent in plain wrapper by express, prepaid, for \$1.00, or 3 bottles, \$2.75. Enclose cent on request.