

Business Cards and Societies

PROFESSIONS AND TRADES ALPHABETICALLY ARRANGED.

PHYSICIANS.

DR. W. G. COLE, OFFICE IN JUDD building. Office hours, 10 to 12 a. m.; 2 to 5 p. m. Telephone, 77.

J. I. MILLER, M. D., DESPAIN BLOCK, treats and corrects eye troubles, cataracts and conditions and impaired hearing. Glasses correctly fitted for refractive errors.

DR. C. J. SMITH, OFFICE OVER THE Pendleton Savings Bank. Telephone 30; residence telephone 31.

H. S. GARFIELD, M. D., HOMEOPATHIC physician and Surgeon. Office in Judd building. Telephone: Office, black 24; residence, black 24.

DR. WILLIAM HOUSE, PHYSICIAN AND Surgeon. Office, room 20, Judd building. Phone, Main 72. Residence Phone Red 23.

DR. D. J. McFAUL, ROOM 17 ASSOCIATION block. Telephone Main 93; residence telephone, black 161.

T. M. HENDERSON, PHYSICIAN and Surgeon. Specialties eye, ear, nose and throat. Office in Savings Bank building. Phone Main 33.

BANKS AND BROKERS.

FIRST NATIONAL BANK OF ATHENS, Oregon. Capital, \$50,000 surplus and profits, \$6000. Interest on time deposits. Deals in foreign and domestic exchange. Collections promptly attended to. Henry C. Adams, president; T. J. Kirk, vice-president; E. L. Barnett, cashier; F. S. LeGrow, assistant cashier.

THE PENDLETON SAVINGS BANK, Pendleton, Oregon. Organized March 1, 1889; capital, \$50,000, surplus, \$90,000, interest allowed on time deposits. Exchange bought and sold on all principal points. Special attention given to collections. W. J. Furlish, president; J. N. Teal, vice-president; T. J. Morris, cashier.

THE FARMERS' BANK OF WESTON, Weston, Oregon. Does a general banking business. Exchange bought and sold. Collections promptly attended to. R. Jameson, president; Geo. W. Proebstel, vice president; J. R. Kilgore, cashier; directors, G. A. Hartman, M. M. Johns, T. J. Price, G. D. Gray, J. F. Kilgore, Robert Jameson, G. W. Proebstel.

FIRST NATIONAL BANK OF PENDLETON. Capital \$70,000; surplus, \$95,000. Transacts a general banking business. Exchange and telegraphic transfers sold on Chicago, San Francisco, New York and principal points in the northwest. Drafts drawn on China, Japan and Europe. Makes collections on reasonable terms. Levi Ankeny, president; W. F. Matlock, vice-president; C. B. Wade, cashier; H. C. Guernsey, assistant cashier.

ROYAL NEIGHBORS OF AMERICA—Wildwood Camp, No. 2333, meets second and fourth Monday in each month in Odd Fellows' hall. Mrs. Ida Holcomb, Oracle; Mrs. Nellie Robbins, Recorder.

L. MATILLA TENT, No. 27, K. O. T. M.—Meets in Secret Society Hall, second and fourth Tuesdays in each month. All visiting Sir Knights cordially invited. J. S. Kees, Record Keeper; E. D. Estabrook, Commander.

PENDLETON LODGE, No. 52, A. F. and A. M., meets first and third Mondays of each month. Visiting brethren welcome. T. J. Tweedy, W. M.; Joe H. Parkes, Sec.

PENDLETON CHAPTER, No. 28—T. C. Taylor, H. P.; F. F. Wamsley, Secretary. Meets first and fourth Friday of each month in Masonic Hall.

PIONEERS OF THE PACIFIC—William Martin Encampment, No. 1. Meets every Wednesday at Hendrick's Hall. Mrs. L. F. Lampkin, Secretary.

DAMON LODGE, No. 4—KNIGHTS OF Pythias, J. P. Nowlin, C. C.; R. W. Fletcher, K. of R.; S. Meets every Monday in Secret Society Hall.

MODERN WOODMEN OF AMERICA—Tumilla Camp, No. 6399. Meets first and third Mondays of each month at Odd Fellows' Hall, George A. Hamblin, Consul; G. A. Robbins, Clerk.

WOODMEN OF THE WORLD—REGULAR meetings of Pendleton Camp, No. 41, W. of W., are held in Secret Society Hall every Saturday evening. Visiting neighbors are always welcome. J. P. Walker, Clerk; J. P. Earl, C. C.

STILLMAN & PIERCE, ATTORNEYS AT Law. Mr. Stillman has been admitted to practice in United States patent offices and makes a specialty of Patent Law. Rooms 10, 11, 12 and 13 Association block.

STILLMAN & PIERCE, ATTORNEYS AT Law. Mr. Stillman has been admitted to practice in United States patent offices and makes a specialty of Patent Law. Rooms 10, 11, 12 and 13 Association block.

STILLMAN & PIERCE, ATTORNEYS AT Law. Mr. Stillman has been admitted to practice in United States patent offices and makes a specialty of Patent Law. Rooms 10, 11, 12 and 13 Association block.

STILLMAN & PIERCE, ATTORNEYS AT Law. Mr. Stillman has been admitted to practice in United States patent offices and makes a specialty of Patent Law. Rooms 10, 11, 12 and 13 Association block.

STILLMAN & PIERCE, ATTORNEYS AT Law. Mr. Stillman has been admitted to practice in United States patent offices and makes a specialty of Patent Law. Rooms 10, 11, 12 and 13 Association block.

STILLMAN & PIERCE, ATTORNEYS AT Law. Mr. Stillman has been admitted to practice in United States patent offices and makes a specialty of Patent Law. Rooms 10, 11, 12 and 13 Association block.

STILLMAN & PIERCE, ATTORNEYS AT Law. Mr. Stillman has been admitted to practice in United States patent offices and makes a specialty of Patent Law. Rooms 10, 11, 12 and 13 Association block.

STILLMAN & PIERCE, ATTORNEYS AT Law. Mr. Stillman has been admitted to practice in United States patent offices and makes a specialty of Patent Law. Rooms 10, 11, 12 and 13 Association block.

STILLMAN & PIERCE, ATTORNEYS AT Law. Mr. Stillman has been admitted to practice in United States patent offices and makes a specialty of Patent Law. Rooms 10, 11, 12 and 13 Association block.

STILLMAN & PIERCE, ATTORNEYS AT Law. Mr. Stillman has been admitted to practice in United States patent offices and makes a specialty of Patent Law. Rooms 10, 11, 12 and 13 Association block.

STILLMAN & PIERCE, ATTORNEYS AT Law. Mr. Stillman has been admitted to practice in United States patent offices and makes a specialty of Patent Law. Rooms 10, 11, 12 and 13 Association block.

STILLMAN & PIERCE, ATTORNEYS AT Law. Mr. Stillman has been admitted to practice in United States patent offices and makes a specialty of Patent Law. Rooms 10, 11, 12 and 13 Association block.

STILLMAN & PIERCE, ATTORNEYS AT Law. Mr. Stillman has been admitted to practice in United States patent offices and makes a specialty of Patent Law. Rooms 10, 11, 12 and 13 Association block.

STILLMAN & PIERCE, ATTORNEYS AT Law. Mr. Stillman has been admitted to practice in United States patent offices and makes a specialty of Patent Law. Rooms 10, 11, 12 and 13 Association block.

STILLMAN & PIERCE, ATTORNEYS AT Law. Mr. Stillman has been admitted to practice in United States patent offices and makes a specialty of Patent Law. Rooms 10, 11, 12 and 13 Association block.

STILLMAN & PIERCE, ATTORNEYS AT Law. Mr. Stillman has been admitted to practice in United States patent offices and makes a specialty of Patent Law. Rooms 10, 11, 12 and 13 Association block.

STILLMAN & PIERCE, ATTORNEYS AT Law. Mr. Stillman has been admitted to practice in United States patent offices and makes a specialty of Patent Law. Rooms 10, 11, 12 and 13 Association block.

STILLMAN & PIERCE, ATTORNEYS AT Law. Mr. Stillman has been admitted to practice in United States patent offices and makes a specialty of Patent Law. Rooms 10, 11, 12 and 13 Association block.

STILLMAN & PIERCE, ATTORNEYS AT Law. Mr. Stillman has been admitted to practice in United States patent offices and makes a specialty of Patent Law. Rooms 10, 11, 12 and 13 Association block.

STILLMAN & PIERCE, ATTORNEYS AT Law. Mr. Stillman has been admitted to practice in United States patent offices and makes a specialty of Patent Law. Rooms 10, 11, 12 and 13 Association block.

PATENT FOR AMATEUR EQUESTRIANS.



COMMERCE - TRADE

BUTTER MAKES A DROP COUNTRY BUTTER 40C ROLL.

There is no change locally in the wheat market. Review of the Portland Wheat Market. Only one change will be noticed in the local markets published below. That is in butter. One week ago today, and for several months past, butter has been quoted at 50 and 65 cents and today it is down to 40 and 60 cents a roll. Consumers of the product of the dairy have been wondering why butter remained so high and the reason for this was the price of feed and the lateness of grass, so that the dairymen have been compelled to feed until recently. There is no change locally in the wheat market.

Local Market Prices.

The following shows the prices paid on the local market:

Turnips, 75c per sack.
Parsnips, 75c per sack.
Cabbage, 4c lb.
Cheese, per lb., 20c.
Onions, per cwt., \$1.50 to \$2.
Green onions, 25c doz.
Beets, per lb., 1 1/2c.
Potatoes, per cwt., \$1.50 to \$1.75.
Apples, per box, \$1.50.
Horse radish, 12 1/2c lb.
G-luck, 12 1/2c lb.
Sweet potatoes, 5c per lb.
Sauer Kraut, 40c per gallon.
Pendleton Livestock and Poultry.
Chickens, hens, per doz., \$3.50 to \$4.
Roosters, \$3.50 to \$4.50.
Turkeys, per lb., 10.
Geese, per doz., \$9.
Spring chickens, per doz., \$3.50.
Ducks, per doz., \$3.75.
Pigeons, per doz., \$1.50.
Eggs, 15c in trade.
Butter, 40 and 60c per roll.
Choice beef cattle, etc.
Cows, per hundred, \$3.10.
Steers, \$4.25 to \$4.50.
Hogs, live, 5c.
Hogs, dressed, 6c.
Calves, dressed, 7 to 8c.

Pendleton Retail Grocery Prices.

Sugar—Cane granulated, best, \$5.00 per sack; do., 16 lbs, \$1.
Coffee—Mocha and Java, best, 40c per lb; next grade, 35c lb; lower grades coffee, 25 to 15c lb; package coffee, 15c lb.
Rice—Best head rice, 12 1/2c per lb; next grade, 11 1/2c per lb.
Salt—Coarse, 80c per 100; table, \$2.20 per 100.
Flour, B. B., \$3.40 per bbl.
Flour, Walter's, \$3.40 per bbl.

Review Portland Wheat Market.

Portland, May 1.—The Commercial Review in its issue of today, says of the wheat situation: The local market is inactive. Fewer sellers have offered stock during the past week than for some time past, and it looks as though holders have made up their minds either to obtain a radical advance on present quotations or carry their stock over into the new season. It must be admitted that prospects of the former contingency arising is very doubtful, there being nothing in late foreign advices to cause exporters to work business at anything above current figures. Indeed, shippers appear indifferent as to whether they do anything further this season or not. They certainly will not without seeing a profit in sight. A number of vessels are in the river disengaged, but rates are too low for ship owners and they prefer to lay their ships alongside of the dock and wait further developments rather than make concessions to secure immediate business; as a result, exporters are between two fires—to pay above ruling prices for wheat or any advance on spot freight values would cause a loss before the cargo left the river and quite an advance abroad would be necessary to make the shipper whole, to say nothing of a profit. It is not surprising, therefore, that our exporters are not anxious to work new business under the present conditions. Quotations remain largely nominal at 65c for club, 67c for bluestem and 65c for valley.

San Francisco Wheat Market. San Francisco, May 1.—The market here for the past week has been very steady, and shows very little

change from that of the preceding week. Exporters are in the market at all times, but at present are only buying sparingly when price meets their views. Holders are not disposed to market the balance of their crop freely, as stocks are becoming smaller and the carry-over on July 1 will not be very large. More attention is being paid by shippers to tonnage for the new crop loading. Tonnage in port chartered is receiving quick dispatch, and the fleet is diminishing quite rapidly. Crop advices from all sections of the state are very good, and indications now point to a very good crop. Warmer rains have occurred during the week all over the wheat belt. Prices are steady and are quoted \$1.11 1/4 for shipping and \$1.12 1/2 to \$1.15 per cental for milling.

Eastern Livestock.

Chicago, May 1.—Cattle—Market steady, 10 to 15c lower; good to prime steers, \$6.80 to \$7.30; poor to medium, \$4.75 to \$6.40; stockers and feeders, \$2.50 to \$5.25; cows, \$1.40 to \$5.90; heifers, \$2.50 to \$6; canners, \$1.40 to \$2.40; bulls, \$2.50 to \$5.50; calves, \$2 to \$5; Texas-fed steers, \$5.50 to \$6.50.
Hogs—10 to 15c lower; mixed and butchers, \$6.70 to \$7.20; good to choice heavy, \$7.20 to \$7.30; rough heavy, \$6.80 to \$7.05; light, \$6.70 to \$6.85; bulk of sales, \$6.85 to \$7.10.
Sheep—Sheep, steady; lambs, steady, 10c lower; good to choice wethers, \$5.50 to \$6.20; fair to choice mixed, \$4.75 to \$5.40; Western sheep, \$5.25 to \$6.20; native lambs, \$4.75 to \$6.60; Western lambs, \$5.25 to \$6.25.

Boston Wool Market Quiet.

Boston, May 1.—The strike in the woolen mills in this section does not tend to improve the market, and although there is a tendency to weakness, to be seen here and there, prices are practically unchanged. Territory wools, choice staples, are quoted on the scoured basis as follows: Fine, 50 to 52c; fine medium, 47 to 48c; and medium, 45c. The ordinary grade of territory is quoted: Fine, 48 to 50c; fine medium, 43 to 45c; medium, 40c. Australian wools are featureless.

At bedtime I take a pleasant herb drink, the next morning I feel bright and my complexion is better. My doctor says that it acts gently on the stomach, liver and kidneys and is a pleasant laxative. It is made from herbs, and is prepared as easily as tea. It is called Lane's Medicine. Lane's Family Medicine moves the bowels each day. Price 25c and 50c. For sale by Tallman & Co., sole agents.

Don't Use Too Many Words.

Multiplication of words increases the expense and decreases the effectiveness of advertising. Say what you have to say in as few words as it can be said—then stop. By so doing you can set what you want to say in larger type, so that it will command the attention of more readers than would a wordy discourse set in small type.

Attention Rooters.

The Pendleton Baseball Rooters Association will hold a meeting at the council rooms Thursday evening, at 8 o'clock, to arrange for the trip to Walla Walla Sunday. All interested are invited to attend.

In Need of Money.

All parties knowing themselves indebted to D. Kemler are hereby notified to call and settle at once and save costs. D. KEMLER.

WOOD! COAL!

WOOD! COAL!

WOOD! COAL!

W. C. MINNIS

SELLS BOTH.

Kemerer Coal. First Class Wood Orders Promptly Filled.

Telephone, Red 401, or call on W. C. MINNIS, Office Main Street, just opposite Hansford & Thompson's hardware store.

Classified Advertisements

COUNT SIX AVERAGE WORDS TO THE LINE.

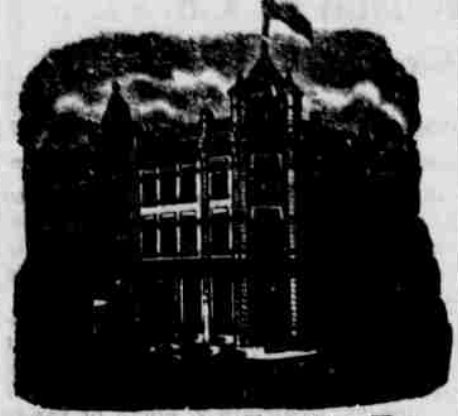
TWO LINES.		THREE LINES.	
1 time	15c	1 time	20c
2 times	20c	2 times	30c
1 week	30c	1 week	45c

Extra lines: .10 cents each a week; 25 cents a line per month.

HOTELS.

HOTEL PENDLETON

VAN DRAN BROS., Props.
The Best Hotel in Pendleton
and as good as any.



Headquarters for Traveling Men.
Commodious Sample Rooms.

Rates \$2 per day.

Special rates by week or month.
Excellent Cuisine,
Every Modern Convenience.

Bar and Billiard Room in Connection

Only Three Blocks from Depot.

GOLDEN RULE HOTEL.

Corner Court and Johnson Streets,
Pendleton, Oregon.

M. F. Kelly, Proprietor.



HEATED BY STEAM.
LIGHTED BY ELECTRICITY.

American Plan, rates \$1.25 to \$2.00 a day.
European plan, 50c, 75c, \$1.00
Special rates by week or month

Free Bus fleets all Trains.
Commercial Trade Solicited.
Fine Sample Rooms

Special attention given Country Trade

Hotel St. George



GEO. DARVEAU, Prop.;
Elegantly Furnished
Steam Heated

European Plan.
Block and a half from depot.
Sample Room in connection.

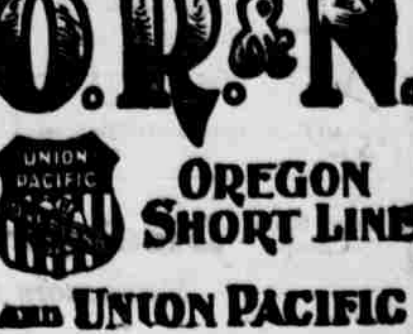
Room Rate - 50c, 75c, \$1.00

Farmers Custom Mill

Fred Walters, Proprietor.

Capacity, 150 barrels a day
Flour exchanged for wheat
Flour, Mill Feed, Chopped Feed, etc. always on hand.

TRANSPORTATION LINES.



DEPART FOR

DEPART FOR	Time Schedule From Pendleton	ARRIVE FROM
Chicago-Portland Special 5:30 p. m. via Huntington.	Salt Lake, Denver, Ft. Worth, Omaha, Kansas City, St. Louis, Chicago and East.	8:00 a. m.
Atlantic Express 5:45 a. m. via Huntington.	Salt Lake, Denver, Ft. Worth, Omaha, Kansas City, St. Louis, Chicago and East.	11:10 p. m.
St. Paul Fast Mail 8:15 a. m. via Spokane.	Walla Walla, Lewiston, Spokane, Wallace, Pullman, Minneapolis, St. Paul, Duluth, Milwaukee, Chicago and East.	5:30 p. m.

Ocean and River Schedule.

FROM PORTLAND.	
All sailing dates subject to change. For San Francisco sail every 5 days.	4 p. m.
Daily except Sunday 5 p. m. Saturday 10 p. m.	Columbia River To Astoria and Way Landings. 4 p. m. Sunday

Willamette River

Boats leave Portland daily, except Sunday (stage of water permitting) for Willamette and Yamhill River points.

Leave	Snake River	Leave
Kiparis 4:00 a. m. Daily Except Mon	Riparis to Lewiston.	Lewiston 7:30 a. m. Daily Except Mon

F. F. WAMBLEY, Agent, Pendleton.

NORTHERN PACIFIC

RUNS

Pullman Sleeping Cars,
Elegant Dining Cars,
Tourist Sleeping Cars

ST. PAUL
MINNEAPOLIS
DULUTH
FARGO
GRAND FORKS
CROOKSTON
WINNEPEG
HELENA and BUTTE.

TO

THROUGH TICKETS TO

CHICAGO
WASHINGTON
PHILADELPHIA
NEW YORK
BOSTON
and all points East and South

Through tickets to Japan and China, via Tacoma and Northern Pacific Steamship Co. and American line.

TIME SCHEDULE.

Trains leave Pendleton daily except Sunday at 9:00 p. m.
For further information, time cards, maps, and tickets, call on or write W. Adams, Pendleton, Oregon, or A. D. CHARLTON, Third and Morrison Sts., Portland, Ore.

Washington & Columbia River Railroad

Take this route for

For Chicago, St. Paul, St. Louis, Kansas City, St. Joe, Omaha, and All Points East and South

Portland and points on the Sound

TIME CARD.

Leave Pendleton, daily except Sundays at 6:30 p. m.
Arrive Pendleton Monday, Wednesday and Friday 11:55 a. m.
Arrive Pendleton Tuesday, Thursday and Saturday 9:55 a. m.
Leave Walla Walla daily, east bound 10:00 p. m.
Arrive Walla Walla daily west bound 9:05 a. m.
For information regarding rates and accommodations, call on or address W. ADAMS, Agent, Pendleton, Oregon.

S. B. CALDERHEAD, G. P. A., Walla Walla, Wash.

CURE YOURSELF!

Use Big 4 for unnatural discharges, inflammations, irritations or ulcerations of the urinary passages. Painful, and not subject to relapse. Sold by Druggists, or sent in plain wrapper by express, prepaid, \$1.00, or 3 bottles, \$2.75. Circular sent on request.

MADE BROS. COURT STREET, I. A. trial supplies. Houses, stores, wired for all fixtures of all kinds. Get our prices. Single work a specialty.

OREGON ELECTRICAL WORKS, C. F. KINE Prop. Corner Main and Webb streets. Home and bell wiring neatly and promptly done. Give us a trial. All work guaranteed. Phone Red 403, C. F. KINE.