

Business Cards and Societies

PROFESSIONS AND TRADES ALPHABETICALLY ARRANGED.

PHYSICIANS.

W. G. COLE, OFFICE IN JUDD
Building, Office hours, 10 to 12 a. m.;
S. P. M. Telephone 17.

MILLER, M. D., DESPAIN BLOCK.
Examines and corrects eye troubles, cataracts and corrects eye hearing. Hearing corrected by fitting for refractive error.

C. J. SMITH, OFFICE OVER THE
Savings Bank. Telephone 30;
Telephone 51.

GARFIELD, M. D., HOMEOPATHIC
Physician and Surgeon. Office in
Judd Building, Telephone: Office, black
24; residence, black 24.

WILLIAM HOUSE, PHYSICIAN AND
Surgeon. Office, room 20 Judd Build-
ing. Telephone Main 72. Residence Phone Red 28.

J. P. MYAUL, ROOM 17, ASSOCIA-
tion Block. Telephone Main 93; resi-
dence, black 161.

M. HENDERSON, PHYSICIAN
Specialties eye, ear, nose
throat. Office in Savings Bank build-
ing. Phone Main 53.

PHYSICIANS, DRs.
Office one block west of
Hotel Pendleton.

CHRONIC
Diseases and Diseases of
the Hotel Pendleton, Cor. Water
and Main. Pendleton, Ore. Phone
Main 53.

FRATERNAL ORDERS.

ROYAL NEIGHBORS OF AMERICA—WILD-
wood Camp, No. 233, meets second and
fourth Tuesday in each month in Odd Fellows
Hall. Mrs. Ida Holcomb, Oracle; Mrs. Nettie
Robbins, Recorder.

UMATILLA TENT, NO. 27, K. O. T. M.—
Meets in Secret Society Hall, second and
fourth Tuesdays of each month. All vis-
iting Sir Knights cordially invited. J. S.
Kees, Record Keeper; E. D. Estabrook,
Commander.

REDMEN—UMAHALES TRIBE, NO. 18
—Meets every Tuesday night in Hen-
drick's Hall. Roy W. Ritter, Keeper of
Records.

PENDLETON LODGE, NO. 52, A. F. and
A. M., meets first and third Mondays of
each month. Visiting brethren welcome. T.
J. Tweedy, W. M.; Joe H. Parks, Sec.

PENDLETON CHAPTER, NO. 23—T. C.
Taylor, H. P.; F. F. Wamsley, Secretary.
Meets first and fourth Friday of each
month in Masonic Hall.

PENDLETON COMMANDERY, NO. 7.
Robert Forster, E. C.; W. E. Carter, Sec-
retary. Meets first and third Friday of
each month in Masonic Hall.

PIONEERS OF THE PACIFIC—WILL-
iam Martin Encampment, No. 1. Meets
every Wednesday at Hendrick's Hall.
Mrs. L. P. Lampkin, Secretary.

DAMON LODGE, NO. 4—KNIGHTS OF
Pythias. J. F. Nowlin, C. C.; R. W.
Fletcher, K. of R. & S. Meets every
Monday in Secret Society Hall.

MODERN WOODMEN OF AMERICA—
Tutulla Camp, No. 6899. Meets first and
third Saturdays of each month at Hen-
drick's Hall. George A. Hamblin, Con-
sul; G. A. Robbins, Clerk.

WOODMEN OF THE WORLD—REGULAR
meetings of Pendleton Camp No. 41, W.
of W. are held in Secret Society hall every
Saturday evening. Visiting neighbors are
always welcome. J. P. Walker, Clerk; J.
P. Earl, C. C.

BANKS AND BROKERS.

FIRST NATIONAL BANK OF ATHENA,
Oregon. Capital, \$50,000; surplus and
profits, \$6000. Interest on time deposits.
Deals in foreign and domestic exchange.
Collections promptly attended to. Henry
C. Adams, president; T. J. Kirk, vice-pres-
ident; E. L. Barnett, cashier; F. S. Letrow,
assistant cashier.

THE PENDLETON SAVINGS BANK,
Pendleton, Oregon. Organized March 1,
1889; capital, \$50,000; surplus, \$90,000.
Interest allowed on time deposits. Ex-
change bought and sold on all principal
points. Special attention given to collec-
tions. W. J. Furnish, president; J. N.
Teal, vice-president; T. J. Morris, cashier.

THE FARMERS BANK OF WESTON,
Weston, Oregon. Does a general bank-
ing business. Exchange bought and sold.
Collections promptly attended to. H.
Jameson, president; Geo. W. Probstel,
vice-president; J. R. Kliger, cashier; di-
rectors, G. A. Hartman, M. M. Johns, T.
J. Price, G. D. Graw, J. F. Kliger, Robert
Jameson, G. W. Probstel.

FIRST NATIONAL BANK OF PENDLE-
ton. Capital \$70,000; surplus, \$85,000.
Transacts a general banking business. Ex-
change and telegraphic transfers sold on
Chicago, San Francisco, New York and
principal points in the northwest. Drafts
drawn on China, Japan and Europe.
Keeps collections on reasonable terms.
Levi Ankeny, president; W. F. Matlock,
vice-president; C. B. Wade, cashier; H. C.
Guernsey, assistant cashier.

HIDES, PELTS AND JUNK.

YOU CAN GET THE HIGHEST MAR-
ket price for your hides, pelts and all
kinds of junk, such as rubber, brass, cop-
per, lead, zinc, rags and bottles. Iron of
all kinds a specialty. You can bring in
50 cents worth of old rags or ship in
\$500 worth of hides and will be treated
in the same way. We have come here to
stay. Give us a call and you will be satis-
fied. L. Shank & Co. office and warehouse
next to Eastern Hotel, Pendleton, Ore.
Telephone, Red 221.

SECOND HAND DEALERS.

GEORGE O'DANIEL, NEW AND SECOND
hand goods bought and sold. Court St.,
Opera house block. Call and see me.

PHOTOGRAPHERS.

W. S. BOWMAN, LEADING PHOTOGR-
apher of the city. Harvest views. Indian
photos for sale. Finishing done for am-
ateurs. Main St., near bridge. Phone, Red
276.

TRANSFER, TRUCKING, STORAGE.

CROWNER BROS.
TELEPHONE MAIN 4.

You get
What you buy
from us.

WOOD, COAL, SAND & BRICK.
Trucking & Transferring.
Lantz Bros.



"She's awfully stuck up."
"Naturally. Her father made all his money as a bill-poster."

WHEAT SHIPMENTS

FROM PORTLAND AND PUGET
SOUND, 32,270,000 BUSHELS.

Sound Ports Altogether Shipped Only
About as Much as Portland Alone,
While Portland Exporters Handled
Much of That Shipped From Sound
Ports.

The Portland Oregonian says that with little more than two months of the 1914-15 wheat season remaining, the volume of the Oregon, Washington and Idaho crop and its distribution, can be pretty accurately determined. For the 10 months ending April 30, the shipments from Portland and Puget Sound, flour included, will have reached a total of approximately 32,270,000 bushels. In wheat alone, Portland will hold the lead up to May 1, but will be passed by Puget Sound in May and June. In flour shipments the Puget Sound cities will lead Portland for the first 10 months of the cereal year by 260,000 barrels. The approximate figures May 1 will be as follows: From Portland, 12,200,000 bushels of wheat and 800,000 barrels of flour equivalent, flour included, to 16,470,000 bushels of wheat. With a small carry-over, these shipments will be pulled up pretty close to 36,000,000 bushels by the end of the season, June 30, the Puget Sound cities increasing the lead they now hold.

The Contributing Factors.

There are a number of contributing factors to this somewhat surprising change in the relative position of Portland and the Puget Sound cities. Cheap labor on the docks at Seattle and Tacoma is one of them and three steamship lines plying to the Orient affording excellent transportation for flour are another. The wheat crop in the Columbia river countries directly tributary to Portland was below the average of recent years. Par amount to all else in bringing about this change, however, is the aggressiveness of the Northern Pacific railroad, now and in the past. Examine any map of Oregon, Washington and Idaho, and in the richest wheat districts south of Snake river will be found a network of Northern Pacific feeders right in the heart of O. R. & N. territory. Farther north the Spokane & Palouse, another Northern Pacific feeder, cuts into the O. R. & N. territory in the richest part of the Palouse country, and continuing on down into Idaho, taps a country which this season turned out 3,000,000 bushels of wheat. Now, while the maps all show that the Northern Pacific has worked into O. R. & N. territory, they do not show that reciprocity has been practiced to the smallest degree. One short stub running out from La Crosse to Connell is apparently the only break that has ever been made into the enemy's country, and that line is not in operation. Almost directly north of La Crosse lie Ritzville and Wilbur, Wash. The former in 1900 was the greatest primary wheat market in the world, and Wilbur was a close second. Ritzville is on the main line of the Northern Pacific, and Wilbur is on the Central Washington, one of the Northern's most important feeders. Between these two points is Harrington, on the Great Northern. About 100 miles of the road built north from La Crosse or Winona would tap the greatest wheat districts in Adams and Lincoln counties. The product of these big counties last year ran well above 10,000,000 bushels, and the acreage is

steadily increasing. The crop was moved early last year and, while the Central Washington and main line points on the Northern Pacific were unable to secure cars for weeks at a time, the company rushed rolling stock into its feeders in O. R. & N. territory, and moved the crop south of Snake river with all possible speed. The O. R. & N. Company had no branches into Northern Pacific territory, so that country north of Snake river with the exception of competi- tive points in the Palouse, remained untouched until the rush south of Snake river had been taken care of. The result was the crop south of snake river has been nearly all marketed, while in Northern Pacific territory considerable wheat is still coming out.

Handled in Portland. Portland exporters, or exporters having headquarters in Portland, have handled three-fourths of the wheat shipped by way of Puget Sound and they would be glad to handle more of the wheat in this city where their head offices are located. With a single branch running north through Adams and Lincoln counties, the O. R. & N. Company, which always has been and doubtless always will be a Portland enterprise, would have brought out at least 5,000,000 bushels more wheat than was handled from its present limited territory. The natural route to market for all of the wheat which the Northern Pacific hauled out of the Clearwater country last year is by way of Portland, as by the present route this wheat must be hauled up the heavy grade of Potlatch Canyon and again over the heavy grades of the Cascade mountains. This expensive haul out through the canyon will be abandoned some day, and when it is Portland will handle her share of the Idaho wheat crop. The O. R. & N. has given excellent service in its territory, and has made a good fight for business where it was in competitive territory, but is much handicapped through having no branches into the country where the greatest increase in acreage have been noted. The Big Bend country has made some wonderful advances in wheat growing in the past three years, but there are still vast tracts which will come under cultivation, and with a down hill haul from that country to Portland should have at least an equal showing with Puget Sound ports for the business.

Mills Money Makers
MILLS SLOT MACHINES
will work for you 24 hours a day without compensation—**GI VARIETIES**, all prices. Write for catalog and special offer.
MILLS NOVELTY CO., Chicago.
11 to 23 South Jefferson Street.

St. George RESTAURANT
DINNER 25 CENTS
The Only Short Order House in the City.
QUICK SERVICE
Fresh Oysters Always on hand
Open Day and Night
W. W. Pangburn, Proprietor

Classified Advertisements

COUNT SIX AVERAGE WORDS TO THE LINE.

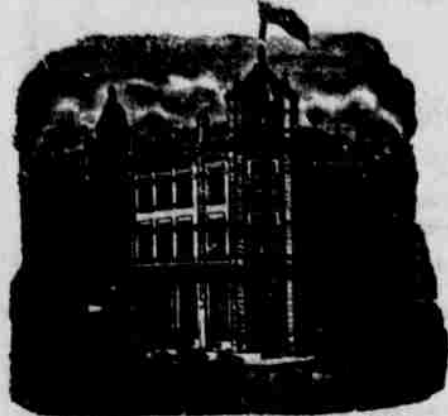
TWO LINES.		THREE LINES.	
1 time	15c	1 time	20c
2 times	20c	2 times	30c
1 week	30c	1 week	45c

Extra lines: 10 cents each a week; 25 cents a line per month.

HOTELS.

HOTEL PENDLETON

VAN DRAN BROS., Props.
The Best Hotel in Pendleton
and as good as any.



Headquarters for Traveling Men.
Commodious Sample Rooms.

Rates \$2 per day.

Special rates by week or month.
Excellent Cuisine,
Every Modern Convenience.

Bar and Billiard Room in Connection

Only Three Blocks from Depot.

GOLDEN RULE HOTEL.

Corner Court and Johnson Streets,
Pendleton, Oregon.
M. F. Kelly, Proprietor.



HEATED BY STEAM.
LIGHTED BY ELECTRICITY.

American Plan, rates \$1.25 to \$2.00 a day.
European plan, 60c, 75c, \$1.00
Special rates by week or month

Free Bus fleets all Trains.
Commercial Trade Solicited.
Fine Sample Rooms

Special attention given Country Trade

Hotel St. George

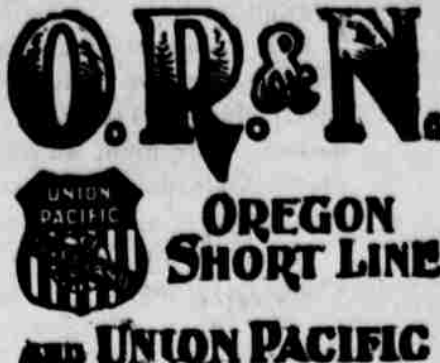


GEO. DARVEAU, Prop.
Elegantly Furnished
Steam Heater
European Plan.
Block and a half from depot.
Sample Rooms in connection.
Room Rate 50c, 75c, \$1.00

Farmers Custom Mill

Fred Walters, Proprietor
Capacity, 150 barrels a day
Flour exchanged for wheat
Floor, Mill Feed, Chopped Wood, etc., always on hand.

TRANSPORTATION LINES.



DEPART FOR	Time Schedule From Pendleton	ARRIVE FROM
Chicago, Portland Special 5:30 p. m. via Harrington.	Salt Lake, Denver, Ft. Worth, Omaha, Kansas City, St. Louis, Chicago and East.	8:00 a. m.
Atlantic Express 5:15 a. m. via Harrington.	Salt Lake, Denver, Ft. Worth, Omaha, Kansas City, St. Louis, Chicago and East.	11:10 p. m.
St. Paul Fast Mail 8:15 a. m. via Spokane.	Walla Walla, Lewiston, Spokane, Wallace, Pullman, Minneapolis, St. Paul, Duluth, Milwaukee, Chicago and East.	5:30 p. m.

Ocean and River Schedule.

FROM PORTLAND.		
8:00 p. m.	All sailing dates subject to change. For San Francisco sail every 5 days.	4 p. m.
Daily except Sunday 8 p. m. Saturday 10 p. m.	Columbia River To Astoria and Way Landings.	4 p. m. Sunday
Willamette River		
Boats leave Portland daily, except Sunday (stage of water permitting) for Willamette and Yamhill River points.		
Leave Riparia 4:30 a. m. Daily Except Mon	Snake River Riparia to Lewiston.	Leave Lewiston 7:00 a. m. Daily Except Mon

F. F. WAMBLEY, Agent, Pendleton.



RUNS

Pullman Sleeping Cars,
Elegant Dining Cars,
Tourist Sleeping Cars

ST. PAUL
MINNEAPOLIS
DULUTH
FARGO
GRAND FORKS
CROOKSTON
WINNEPEG
HELENA and BUTTE

THROUGH TICKETS TO

CHICAGO
WASHINGTON
PHILADELPHIA
NEW YORK
BOSTON

and all points East and South

Through tickets to Japan and China, via Tacoma and Northern Pacific Steamship Co. and American line.

TIME SCHEDULE.

Trains leave Pendleton daily except Sunday at 6:00 p. m.
For further information, time cards, maps, and tickets, call on or write W. Adams, Pendleton, Oregon, or A. D. CHARLTON, Third and Morrison Sts., Portland, Ore.

Washington & Columbia River Railroad

Take this route for

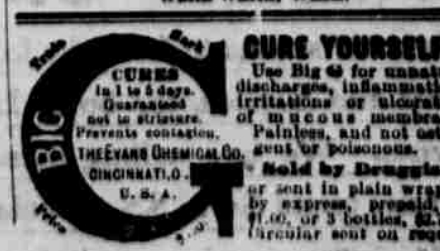
For Chicago, St. Paul, St. Louis, Kansas City, St. Joe, Omaha, and

All Points East and South

Portland and points on the Sound

TIME CARD.

Leave Pendleton, daily except Sundays at 6:00 p. m.
Arrive Pendleton Monday, Wednesday and Friday 11:55 a. m.
Arrive Pendleton Tuesday, Thursday and Saturday 9:55 a. m.
Leave Walla Walla daily, east bound 10:00 p. m.
Arrive Walla Walla daily west bound 9:25 a. m.
For information regarding rates and accommodations, call on or address W. ADAMS, Agent, Pendleton, Oregon.
S. B. CALDERHEAD, G. P. A., Walla Walla, Wash.



CURE YOURSELF
Use Big 45 for uncurable discharges, inflammation, irritations or obstructions of the urinary passages. Painless, and not outside THEYRE'S CHEMICAL CO. sent by post.