

SEEDS!

All Kinds of Seeds,

Alfalfa,
Timothy,
Broome
Grass,
Blue
Grass
and
White
Clover.

Orders for any kind
of Seed Solicited by

TAYLOR,

THE HARDWARE MAN.

Who Sells Field Fence in all heights,
as well as every variety of HARD-
WARE, Barbed Wire, &c

Empire Meat Market

IS THE PENDLETON
DEPOT FOR MEATS
OF ALL KINDS IN
LARGE OR SMALL LOTS.
QUICK DELIVERY IN CITY.
FAMILY TRADE SPECIALLY
CARED FOR.

Schwarz & Greulich,
Proprietors.

Phone, Main 18. 607 Main Street.

WOOD! COAL!
WOOD! COAL!
WOOD! COAL!

W. C. MINNIS

SELLS BOTH.

Kemerer Coal. First Class Wood
Orders Promptly Filled.

Telephone, Red 401, or call on
W. C. MINNIS,
Office Main Street, just opposite Han-
ford & Thompson's hardware store.

LaFontaine & Garrison
Proprietors

Old Dutch Henry
Feed Yard.

Cavalry Horses for Sale.

BEST OF CARE TAKEN OF
TEAMS OVER NIGHT

GIVE US A CALL.

SEALS!

Notary and
Corporation

\$3.50 to \$5 Delivered

Order of us and save money.
Orders for Rubber Stamps
also solicited.

EAST OREGONIAN PUB. CO

DRESS TRIFLES.

Parasols, Tea Jackets and Embroidered Waistcoats.

Parasols can be bought almost for nothing at this time of the year. White sunshades are always fashionable, and Persian patterns promise to be all the style.

Ten jackets are very fashionable in the marquis style with embroidered waistcoats, and embroidering these constitutes a dainty bit of fancy work. These embroidered waistcoats are also much used with tailor makes which have open front jackets.

Several well known society women have the pretty fad of always wearing a certain kind of flower no matter what time of the year it is. This idea can be carried out by the girl in moderate circumstances if she uses artificial flowers on her evening dresses. It is a chic French notion to loop in ribbons or silver cord with the flowers, and a



WORN IN "FROCKS AND FRILLS."

dainty bunch of artificial blossoms so arranged goes far toward renovating an old evening dress.

The creation in the sketch is worn in "Frocks and Frills." It is an empire robe of black point d'esprit over silver gauze, with an applique of ivy leaves in cut out velvet. The gown is finished at the bottom with masses of pink chiffon frills and chiffon roses. The little simulated bolero is of drawn and wired silk, a couple of pink tulle rosettes being placed immediately in front, from which depend little tassels.

JUDIC CHOLLET.

EVENING GOWNS.

Floral Trimmings Combined With Lace and Ribbon.

The evening sleeve of the moment is a matter of taste. It is made with one single puff to the elbow or tight fitting a la Marie Antoinette with a frill. Some sleeves are composed of seven or eight accordion plaited frills. On many gowns there are no sleeves at all, only shoulder straps composed of jeweled chains or ropes of flowers. If a wom-



FOR A YOUNG GIRL

an has good arms, she should display them; if not, there are transparencies of chiffon and sheer effects.

Frocks of gray chiffon are worn by those who are in half mourning and by many who are not. There seems to be a craze just now for these soft pale gray frocks. They are relieved with violets or pale blue flowers.

Floral trimmings are much the style and with dainty touches of lace and ribbon form admirable trimmings for evening frocks. Roses, tuberose and orchids are made so natural that they almost defy detection.

The French dress in the illustration is of pale yellow mousseline. The skirt has a double tunic effect, the edge of each tunic being embellished with a hand painted design. The decollete waist is held in place by narrow straps of velvet, and the half sleeves are of lace and mousseline. There is an odd tunic overdress effect of cream guipure

lace. The corsage is daintily finished with a cluster of tinted yellow blossoms. JUDIC CHOLLET.

THE SUMMER HATS.

They Will Have Irregular Brims and Be Worn Off the Face.

The indications are that the fashionable hats next summer will be worn off the face. The edges will be very irregular, and the hat will be tilted a little to one side by means of a band of velvet bearing a big bow. Floral trimmings are to be much used, and the inevitable bow of lace or velvet will droop over the hair in the back.

The large plateau toques, when kept flat and slightly tilted to one side, are charming in front, but hideous in the back. The prettiest toques of this



CHIFFON HAT.

style are of chiffon, draped with lace and relieved here and there by touches of fur or velvet.

Wreaths of autumn leaves are combined with roses with very good effect. Large bows of wired lace are very smart on tucked black chiffon hats.

The proper thing for summer will be to have the hat match the gown, or at least repeat in some particular the leading color of the gown.

A smart hat of chiffon is shown in the cut. It is laid in soft folds both as regards the brim and the crown, which is low and flat. The hat is tilted to one side with a wide velvet band, which is hidden by a cluster of flowers. The hat is simply trimmed with a cluster of flowers and a drooping black velvet bow. JUDIC CHOLLET.

WRINKLES OF FASHION.

Loose Fronts, Fluffy Vests and Much Trimmed Skirts.

Everything is worn loose in front. The blouse is extensively pouched, and the new belts still pull down far below the waist line in front, giving a correspondingly short effect in the back. The coats are fashionable worn open and filled in with much lace and a pouched or cascaded vest. Even the short boleros have tabbed ends falling far below the waist or revers so arranged that the ends flare out beyond the natural lines of the body.

Wide bands of velvet are used to trim the latest tailor makes. These bands of velvet are frequently outlined by narrow braid.

Tunic skirts showing a double or triple effect are the latest cry from Paris; so is the five flounce skirt. As its name implies, this is composed of five ruffles gored and graduated from nar-



THE LATEST BOLERO.

row to wide as they draw nearer the bottom of the skirt. The edges of these ruffles are heavily stitched.

Panels are once more to be seen, and in lace they form a very rich decoration for the front of a ball or dinner gown.

The smart bolero in the illustration may be made by any clever woman. It is the latest Paris model. There are tucks on each shoulder, which, farther down, are held into two clusters. The top of the sleeves is laid in tucks and the fullness disposed into a tight fitting cuff. The fronts are cut long and fall over the stitched belt. This is of white cloth or taffeta to match the white appliques, which lend an air of chic to the garment. Under the open front are worn a vest and high collar of white taffeta or cloth stitched, and the fronts of the jacket are held in place over this by lacings of narrow black velvet.

A pretty model for a skirt to be worn with this should have a wide flounce headed by five folds stitched flat, the flounce being appliqued with the embroidery. JUDIC CHOLLET.

A TALE OF TWO TAILS.



A LITERARY QUERY.

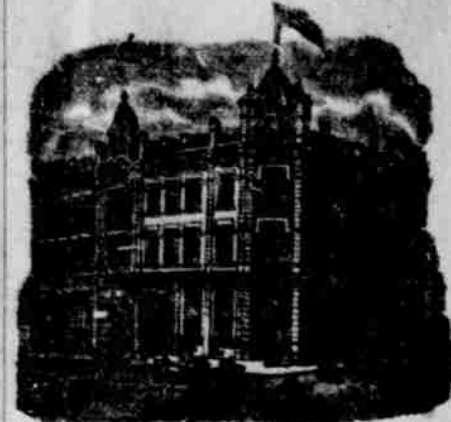


"What is most needed by the poet of today?"
"Postage stamps."

HOTELS.

HOTEL PENDLETON

VAN DRAN BROS., Props.
The Best Hotel in Pendleton
and as good as any.



Headquarters for Traveling Men.
Commodious Sample Rooms.

Rates \$2 per day.

Special rates by week or month.
Excellent Cuisine,
Every Modern Convenience.

Bar and Billiard Room in Connection

Only Three Blocks from Depot.

GOLDEN RULE HOTEL.

Corner Court and Johnson Streets,
Pendleton, Oregon.

M. F. Kelly, Proprietor.



HEATED BY STEAM.
LIGHTED BY ELECTRICITY.

American Plan, rates \$1.25 to \$2.00 a day.
European Plan, 50c, 75c, \$1.00
Special rates by week or month

Free Bus Meets all Trains.
Commercial Trade Solicited.
Fine Sample Rooms

Special attention given Country Trade

Hotel St. George



GEO. DARVEAU, Prop.;
Elegantly Furnished
Steam Heated

European Plan.
Block and a half from depot.
Sample Room in connection.

Room Rate - 50c, 75c, \$1.00



The Columbia Lodging House

NEWLY FURNISHED
BAR IN CONNECTION
IN CENTER OF BLOCK
BET. ALTA & WEBB STS

F. X. SCHEMP, Prop.

Daily East Oregonian by Carrier
only 15 cents a week.