

CLASSIFIED ADVERTISEMENTS.

These are the People's Ads.

And the People read them. If you have anything to say to the people, try an ad. here.

One cent per word for the first insertion, 1-2c thereafter; 30 words or less, \$1.50 per month, or \$12 per year. No ad. inserted for less than 15c.

WANTED.

WANTED TO SOLICIT...
 THE Oregon Mutual Home So-
 ciety, address: T. W. W.
 Oregon.

PHYSICIANS.

SOLE OFFICE IN JUDD
 hours, 10 to 12 a. m.;
 Telephone 77.

SOUTH OFFICE OVER THE
 Savings Bank. Telephone 30;
 Telephone 81.

FIELD, M. D., HOMEOPATHIC
 and Surgeon. Office in
 Telephone: Office, block
 black 24.

HOUSE PHYSICIAN AND
 office, room 20 Judd Build-
 Main 72. Residence Hotel

HENDERSON, PHYSICIAN
 Specialties eye, ear, nose
 Office in Savings Bank build-
 Main 33.

M. D., DESPAIN BLOCK,
 corrects eye troubles catar-
 acts and impaired hearing.
 specially fitted for refractive er-

WYATT, ROOM 17, ASSOCIA-
 Telephone Main 93; resi-
 black 161.

PHYSICIANS, DRS.
 office one block west of

E. BLAKESLEE, CHRONIC
 eye troubles and diseases of
 Hotel Pendleton, cor Water
 St., Pendleton, Ore. Phone

DENTISTS.

QUINN, DENTIST, OFFICE IN
 building.

MAX, DENTIST, IN ASSOCIA-
 tion with F. H. Clifton's office.

TECTS AND BUILDERS.

WARD ARCHITECT AND
 draftsman complete and well-
 known building in the city or
 town 17, Judd building.

SOLE CONTRACTORS AND
 estimates furnished on all
 work a specialty. Prompt
 ship on bluff street, near Main

MAY, CONTRACTOR AND
 estimates furnished on all
 masonry, cement, walks, etc.
 orders can be left at the East
 office.

BANKS AND BROKERS.

NATIONAL BANK OF ATHENA.
 Capital, \$50,000; surplus, \$90,000.
 Loans on time deposits. Ex-
 change and foreign exchange.
 promptly attended to. Henry
 L. Barnett, cashier; Mrs. E. L.
 Barnett, assistant cashier.

PENDLETON SAVINGS BANK.
 Oregon. Organized March 1,
 capital, \$50,000; surplus, \$85,000.
 Loans on time deposits. Ex-
 change and foreign exchange.
 special attention given to collec-
 tion of accounts. President: J. N.
 Morrison; Cashier: T. J. Morris.

FARMERS BANK OF WESTON,
 Oregon. Issues a general bank-
 note. Exchange bought and sold.
 promptly attended to. R.
 W. Probstel, president; Geo. W.
 Probstel, cashier; all
 business, M. M. Johns, T.
 G. D. Gray, J. F. Kilgore, Robert
 G. W. Probstel.

NATIONAL BANK OF PENDLE-
 ton. Capital, \$20,000; surplus, \$85,000.
 Loans on time deposits. Ex-
 change and foreign exchange.
 and telegraphic transfers sold on
 New York, San Francisco, New York and
 points in the northwest. Drafts
 on China, Japan and Europe.
 collections on reasonable terms.
 Cashier: W. F. Matlock.
 Assistant Cashier: C. B. Wado; H. C.
 Wado, assistant cashier.

ATTORNEYS.

CARTER & RALEY, ATTORNEYS AT
 Law. Office in Savings Bank building.

BEAN & LOWELL, ATTORNEYS AT
 Law. Room 14 Association block, Pen-
 dleton, Oregon.

T. G. HAILEY, LAWYER. OFFICE IN
 Judd building, Pendleton, Oregon.

N. HERKLEY, ATTORNEY AT LAW.
 Office in Association block.

E. D. BOYD, ATTORNEY AT LAW 111
 Court St.

L. R. REIDER, ATTORNEY AT LAW.
 Pendleton, Oregon.

JAMES A. FEE, LAW OFFICE IN JUDD
 Building.

STILLMAN & PIERCE, ATTORNEYS
 at Law. Mr. Stillman has been admit-
 ted to practice in United States patent
 offices and makes a specialty of Patent
 Law. Rooms 10, 11, 12 and 13 Associa-
 tion block.

HIDES, PELTS AND JUNK.

YOU CAN GET THE HIGHEST MAR-
 ket price for your hides, pelts and all
 kinds of junk, such as rubber, brass, cop-
 per, lead, zinc, rags and bottles. Iron of
 all kinds a specialty. You can bring in
 50 cents worth of old rags or ship in
 \$500 worth of hides and will be treated
 in the same way. We have come here to
 stay. Give us a call and you will be satis-
 fied. L. Shank & Co., office and warehouse
 next to Eastern Hotel, Pendleton, Ore.
 Telephone, Red 221.

FRATERNAL ORDERS.

ROYAL NEIGHBORS OF AMERICA—
 Wildwood Camp, No. 2333. Meets sec-
 ond and fourth Saturdays of each month,
 in Hendrick's Hall. Mrs. Ida Holcomb,
 Oracle; Mrs. Nettie Robbins, Recorder.

UMATILLA TENT NO. 27, K. O. T. M.—
 Meets in Secret Society Hall, second and
 fourth Tuesdays of each month. All vis-
 iting Sir Knights cordially invited. J. S.
 Koss, Record Keeper; E. D. Estabrook,
 Commander.

MODERN WOODMEN OF AMERICA—
 Tutuilla Camp, No. 6399. Meets first and
 third Saturdays of each month at Hen-
 drick's Hall. George A. Hamblin, Com-
 mander; G. A. Robbins, Clerk.

W. of A.—REGULAR MEETINGS OF
 Pendleton Camp, No. 41. Woodmen of
 the World are held in Odd Fellows' Hall
 every Tuesday evening. Visiting neighbors
 always welcome. J. P. Walker, Clerk.

REMEMBER—UMAHALES TRIBE, NO. 18
 Meets every Tuesday night in Hen-
 drick's Hall. Roy W. Ritter, Keeper of
 Records.

PENDLETON LODGE, NO. 52, A. F. and
 M. Meets first and third Mondays
 each month. Joe H. Parks, Secretary.

PENDLETON CHAPTER, NO. 23—T. C.
 Taylor, H. P. F. Wamsley, Secretary.
 Meets first and fourth Friday of each
 month in Masonic Hall.

PENDLETON COMMANDERY, NO. 7,
 Robert Meets first and third Friday of
 each month in Masonic Hall.

MEMBERS OF THE PACIFIC—WIL-
 Ham Martin, Grandmaster, No. 1. Meets
 every Wednesday at Hendrick's Hall.
 Mrs. L. F. Lampkin, Secretary.

PENDLETON LODGE, NO. 288—B. P. O.
 Elias Thomas, Fils Gerald, E. R. L.
 W. Heid, Secretary. Meets first and
 third Thursdays, Secret Society Hall.

DAMON LODGE, NO. 4, KNIGHTS OF
 Pythias. J. F. Nowlin, C. C.; R. W.
 Feecher, K. of R. and S. Meets every
 Monday in Secret Society Hall.

MISCELLANEOUS.

IN POUND—THE HEREINAFTER DE-
 scribed stock has been taken up by the
 City marshal and will be sold at the expiration
 of ten days for costs and expenses.
 One bay horse, age about 12 years, both
 hind feet white, blotch brand on left hip,
 weight about 850 pounds.
 Dated January 10, 1912.
 J. M. BRATHMAN, City Marshal.

OLD NEWSPAPERS TO PUT UNDER
 carpets, on shelves, walls, or for wrap-
 ping purposes. Old newspapers in large
 bundles of one hundred each at 25 cents a
 bundle at the EAST OREGONIAN office,
 Pendleton, Oregon.



OF COURSE NOT.

Politicians—No! I never read what the newspapers say about me.
 Helen Blakeslee—I suppose you wouldn't believe it even if you did.

COMMERCE - TRADE

Local Market Prices.
 The following shows the prices
 paid on the local market:

- Turnips, 75c per sack.
- Parsnips, 75c per sack.
- Cabbage, 4c lb.
- Green onions, per doz. bunches, 25c
- Chinese, per lb., 20c
- Onions, per cwt., \$2.
- Beets, per lb., 13c.
- Potatoes, per cwt., \$2.
- Apples, per box, \$1.
- Horse radish, 12 1/2c lb.
- Garlic, 12 1/2c lb.
- Sauer Kraut, 40c per gallon.

Pendleton Livestock and Poultry.
 Chickens, hens, per doz., \$3.50 to \$4.
 Roosters, \$3.50 to \$4.
 Turkeys, per lb., 10.

- Geese, per doz., \$9.
- Spring chickens, per doz., \$3.50.
- Ducks, per doz., \$3.75.
- Pigeons, per doz., \$1.50.
- Eggs, 35c in trade.
- Butter, 50 to 60c per roll.
- Choice bee, cattle, etc.
- Cows, per hundred, \$3.10.
- Steers, \$3.60.
- Hogs, live, 4 1/2c.
- Hogs, dressed, 6c.
- Calves, dressed, 7 to 8c.

Pendleton Retail Grocery Prices.
 Sugar—Cane granulated, best, \$6
 per sack; do., 15 lbs, \$1; beet granu-
 lated, \$5.75 per sack; do., 16 lbs, \$1.
 Coffee—Mocha and Java, best, 40c
 per lb; next grade, 35c lb; lower
 grades coffee, 25 to 15c lb; package
 coffee, 15c lb.

Rice—Best head rice, 12 1/2c per lb;
 next grade, 8 1/2c per lb.
 Salt—Coarse, \$1.35 per 100; table,
 \$2.20 per 100.

Hides and Pelts in Pendleton.
 No. 1 dry hides, 13c per lb.
 No. 2 dry hides, 8 1/2c per lb.
 Green salted hides, 7c per lb.
 Green unsalted hides, 6c per lb.
 Sheep pelts, short wool, 25c each.
 Sheep pelts, medium wool, 35c each.
 Sheep pelts, long wool, 65c each.
 No. 1 tallow, 2 1/2c per lb.
 No. 2 tallow, 2c per lb.
 Pendleton Flour, Feed, Hay, Etc.
 Flour, \$2.50 per bbl.
 Bran, \$13 per ton.
 Shorts, \$15 per ton.
 Barley, retail, 75c per 100.
 Rye, retail, 90c per 100.
 Oats, retail, \$1.15 per 100.
 Wood, \$5.50 to \$6.
 Chop barley, \$17 per ton.
 Hay—Loose wheat, \$10 ton; baled
 wheat, \$15; timothy baled, \$18; al-
 falfa loose, \$10; baled, \$15; rye hay
 on ranch, \$5 to \$6.

Boys' overalls, made of blue deni-
 ma, 19c pair. Cleaver Bros. Dry
 Goods Co.

HOTEL ARRIVALS.

The Pendleton.
 A. Graydon, Portland.
 P. C. Gearhardt, San Francisco.
 S. A. Mitchell, Colfax.
 M. K. Parsons, Salt Lake.
 C. M. Smith, Portland.
 E. L. Tatom, New York.
 D. W. Campbell and wife.
 J. C. Loneragan, Tacoma.
 A. Eklund and wife, Colfax.
 John Lyons, Portland.
 William Maher, Portland.
 Jessie Palling and wife, city.
 George W. Dodds.

The Golden Rule.
 C. W. Wilbur, Portland.
 L. Cunningham, Portland.
 A. J. Kelly, Milton.
 J. Irons, Freewater.
 W. H. Davis and wife, Dayton.
 R. H. Thompson, Portland.
 A. Smith, Milton.
 H. G. Sibray, Portland.
 A. J. Hall, Spokane.
 A. R. Smith, Milton.
 C. H. Lemery, Adams.
 C. Lewis, Boise.
 Lee Sherman, Mexico.
 E. J. Gardner, Portland.
 J. A. Davis, Portland.
 David Herne, McKay.
 W. A. Irons, Freewater.
 H. M. Cockburn, Milton.
 J. A. Bratton, Weston.
 E. Calvin, Walla Walla.
 A. Collins, Milton.
 P. L. Long, Spokane.
 E. Ray, Milton.
 E. S. Waterman, Athena.
 J. A. Baddeley, Weston.
 R. W. Larson, Spokane.
 Frank Mathews, New York.
 J. T. Wishrow, Hot Lake.

I. L. Ray & Co.,

Buy and sell
**Stocks, Bonds
 and Grain**
 for cash or on margin.
 New York Stock Exchange.
 Chicago Stock Exchange.
 Chicago Board of Trade.

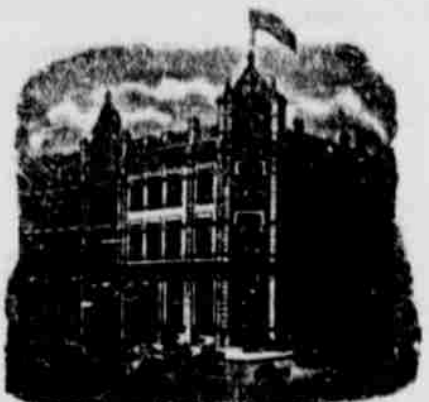
Court Street, Pendleton, Ore.

Daily East Oregonian by Carrier
 only 3c to a week.

HOTELS.

HOTEL PENDLETON

VAN DRAN BROS., Props.
 The Best Hotel in Pendleton
 and as good as any.



Headquarters for Traveling Men.
 Commodious Sample Rooms.

Rates \$2 per day.

Special rates by week or month.
 Excellent Cuisine,
 Every Modern Convenience.

Bar and Billiard Room in Connection

Only Three Blocks from Depot.

GOLDEN RULE HOTEL.

Corner Court and Johnson Streets,
 Pendleton, Oregon.

M. F. Kelly, Proprietor.



HEATED BY STEAM.
 LIGHTED BY ELECTRICITY.

American Plan, rates \$1.25 to \$2.00 a day.
 European plan, 50c, 75c, \$1.00
 Special rates by week or month

Free Bus Seats all Trains.
 Commercial Trade Solicited.
 Fine Sample Rooms

Special attention given Country Trade

Hotel St. George



GEO DARVEAU, Prop.

Elegantly Furnished
 Steam Heated

European Plan
 Room and a half from depot
 Sample Room in connection.

Room Rate - 50c, 75c, \$1.00

TRANSPORTATION LINES.

O. R. & N.

UNION
 PACIFIC
**OREGON
 SHORT LINE**
 AND UNION PACIFIC

DEPART FOR	Time Schedule From Pendleton	ARRIVE FROM
Chicago Portland Special 5:30 p. m. via Rapid Route	Salt Lake, Denver, Ft. Worth, Omaha, Kan- sas City, St. Louis, Chi- cago and East.	8:00 a. m.
Atlantic Express 5:15 a. m. via Rapid Route	Salt Lake, Denver, Ft. Worth, Omaha, Kan- sas City, St. Louis, Chi- cago and East.	11:30 p. m.
St. Paul Fast Mail 8:10 a. m. via Spokane	Walla Walla, Lewiston, Spokane, Walla Walla, Pullman, Minneapolis, St. Paul, Duluth, Milwau- kee, Chicago and East.	5:20 p. m.

Ocean and River Schedule.

FROM PORTLAND.	ARRIVE
All sailing dates subject to change. For San Francisco Sail every 5 days.	4 p. m.

Columbia River	ARRIVE
To Astoria and "ay Landings.	4 p. m. Sunday

Willamette River

Boats leave Portland daily, except Sunday
 (stage of water permitting), for Willamette and
 Yamhill River points.

Leave Riparia	Snake River	Leave Lewiston
4:55 a. m. Daily Except Mon	Riparia to Lewiston.	7:50 a. m. Daily Except Mon

F. F. WAMSLEY, Agent, Pendleton.

Washington & Columbia River Railroad

Take this route for

For Chicago, St. Paul, St. Louis, Kan-
 sas City, St. Joe, Omaha, and
All Points East and South

Portland and points on the Sound

TIME CARD.
 Leave Pendleton, daily except Sundays at
 6:55 p. m.
 Arrive Pendleton Monday, Wednesday and
 Friday 11:55 a. m.
 Arrive Pendleton Tuesday, Thursday and
 Saturday 9:55 a. m.

Leave Walla Walla daily, east bound 10:00 p. m.
 Arrive Walla Walla daily west bound 9:05 a. m.

For information regarding rates and accom-
 modations, call on or address
 W. ADAMS, Agent,
 Pendleton, Oregon

S. B. CALDERHEAD, G. F. A.
 Walla Walla, Wash.

NORTHERN PACIFIC

RUNS

Pullman Sleeping Cars,
 Elegant Dining Cars,
 Tourist Sleeping Cars

TO
ST. PAUL MINNEAPOLIS DULUTH FARGO GRAND FORK CROOKSTON WINNEPEG HELENA and BUTTE

THROUGH TICKETS TO

CHICAGO
 WASHINGTON
 PHILADELPHIA
 NEW YORK
 BOSTON

and all points East and South
 Through tickets to Japan and China, via
 Tacoma and Northern Pacific Steamship Co.
 and American line.

TIME SCHEDULE.
 Trains leave Pendleton daily except Sunday
 at 6:50 p. m.
 For further information, time cards, maps,
 and tickets, call on or write W. ADAMS, Pen-
 dleton, Oregon, or A. D. CHARLTON,
 Third and Morrison Sts., Portland, Ore.

AMERICAN PLAN.

10 per Day and Upwards.



THE PORTLAND

PORTLAND, OREGON.
 Special Rates to Eastern Oregon people visiting Portland. Headquarters
 for tourists and commercial travelers.
 H. C. ROWERS, Manager.