

# CLASSIFIED ADVERTISEMENTS.

Classified Advs.

## These are the People's Ads.

And the People read them. If you have anything to say to the people, try an ad. here.

Classified Advs.

One cent per word for the first insertion, 1-2c thereafter; 30 words or less, \$1.50 per month, or \$12 per year. No ad, inserted for less than 15c.

### WANTED.

GOOD SOLICITOR TO SOLICIT business to the Oregon Mutual Home Savings Bank. For further information, address: T. W. Miller, Portland, Oregon.

### PHYSICIANS.

W. G. COLE, OFFICE IN JUDD building. Office hours, 10 to 12 a. m.; 2 to 5 p. m. Telephone 77.  
 J. J. SMITH, OFFICE OVER THE Oregon Savings Bank. Telephone 30; residence telephone 31.  
 CARPENTER, M. D., HOMEOPATHIC Physician and Surgeon. Office in Judd building. Telephone: Office, black 24; residence, black 24.  
 WILLIAM HOUSE, PHYSICIAN AND Surgeon. Office, room 20 Judd Building. Telephone Main 72; Residence Hotel 10.  
 T. M. HENDERSON, PHYSICIAN AND Surgeon. Specialties eye, ear, nose and throat. Office in Savings Bank building. Telephone Main 33.  
 MILLER, M. D., DEEPAIN BLOCK, eye and corrects eye troubles, cataracts, and impaired hearing. Glasses correctly fitted for refractive error.  
 J. P. MAUL, ROOM 17, ASSOCIATION block. Telephone Main 93; residence telephone black 161.  
 HOMEOPATHIC PHYSICIANS, DR. J. H. Kees, Office one block west of Main Street.  
 MISS K. BLAKELEE, CHRONIC nervous diseases and diseases of the eye. Office Pendleton, cor. Water and Main Sts., Pendleton, Ore. Phone 171.

### DENTISTS.

VAUGHAN, DENTIST, OFFICE IN Judd building.  
 MANN, DENTIST, IN ASSOCIATION block, over F. B. Clifton's office.

### ARCHITECTS AND BUILDERS.

HOWARD, ARCHITECT AND SUPERVISOR, makes complete and reliable plans for buildings in the city or country. Room 17, Judd building.  
 COLE, CONTRACTOR AND ESTIMATOR, estimates furnished on short notice for a specialty. Prompt service. Shop on Bluff street, near Main Street.  
 MAY, CONTRACTOR AND ESTIMATOR, estimates furnished on all kinds of masonry, cement walks, stone work, etc. Orders can be left at the East side office.

### BANKS AND BROKERS.

NATIONAL BANK OF ATHENA, Capital, \$50,000; surplus and profits, \$10,000. Interest on time deposits, 4%; foreign and domestic exchange, promptly attended to. Henry Barnett, president; J. J. Kirk, vice-president; E. L. Barnett, cashier; Mrs. E. L. Barnett, assistant cashier.  
 PENDLETON SAVINGS BANK, Organized March 1, 1902. Capital, \$50,000; surplus, \$30,000. Loans allowed on time deposits. Exchange bought and sold on all principal cities. Special attention given to collection of rents. J. J. Morris, president; J. N. Morris, vice-president; T. J. Morris, cashier.  
 FARMERS BANK OF WESTON, Oregon. Does a general banking business. Exchange bought and sold. Loans promptly attended to. R. H. W. Probstel, president; Geo. W. Probstel, vice-president; J. R. Kluge, cashier; J. H. Hartman, M. M. Johns, T. G. H. Gray, J. P. Kluge, Robert G. W. Probstel.

### ATTORNEYS.

CARTER & RALEY, ATTORNEYS AT LAW. Office in Savings Bank building.  
 BEAN & LOWELL, ATTORNEYS AT LAW. Room 14 Association block, Pendleton, Oregon.  
 T. G. HAILEY, LAWYER, OFFICE IN Judd building, Pendleton, Oregon.  
 N. HERKLEY, ATTORNEY AT LAW. Office in Association block.  
 E. D. BOYD, ATTORNEY AT LAW 111 Court St.  
 L. B. REEDER, ATTORNEY AT LAW, Pendleton, Oregon.  
 JAMES A. FEE, LAW OFFICE IN JUDD Building.  
 STILLMAN & PIERCE, ATTORNEYS at Law. Mr. Stillman has been admitted to practice in United States patent office and makes a specialty of Patent Law. Rooms 10, 11, 12 and 13 Association block.

### HIDES, PELTS AND JUNK.

YOU CAN GET THE HIGHEST MARKET price for your hides, pelts and all kinds of junk, such as rubber, brass, copper, lead, zinc, rags and bottles. Iron of all kinds a specialty. You can bring in 50 cents worth of old rags or ship in \$500 worth of hides and will be treated in the same way. We have come here to stay. Give us a call and you will be satisfied. L. Shank & Co., office and warehouse next to Eastern Hotel, Pendleton, Ore. Telephone, Red 221.

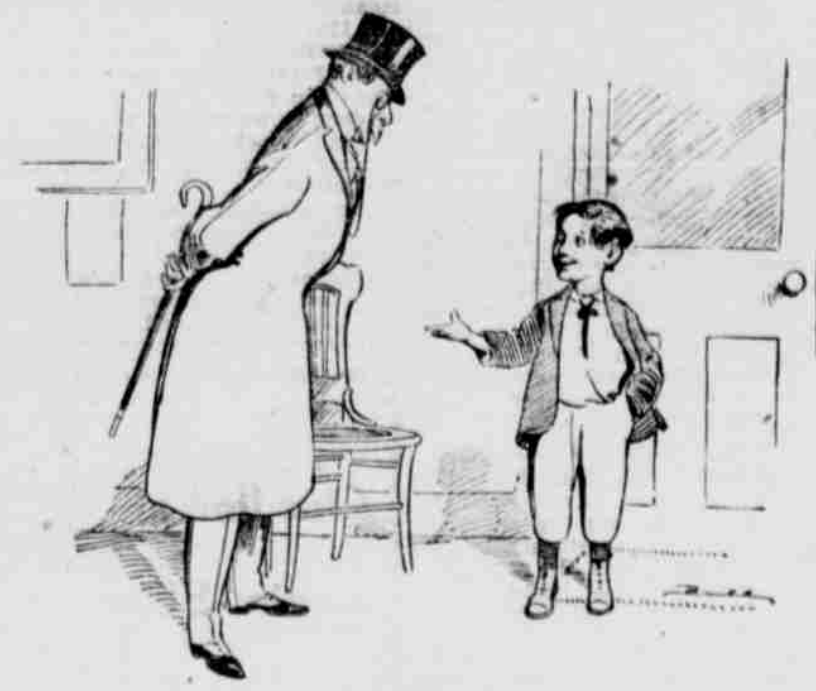
### FRATERNAL ORDERS.

ROYAL NEIGHBORS OF AMERICA—Wildwood Camp, No. 2333, meets second and fourth Saturdays of each month, in Hendrick's Hall, Mrs. Ida Holcomb, Oracle; Mrs. Nettie Robbins, Recorder.  
 UMATILLA TENT, No. 27, K. O. T. M.—Meets in Secret Society Hall, second and fourth Tuesdays of each month. All visiting Sir Knights cordially invited. J. S. Kees, Record Keeper; E. B. Estabrook, Commander.  
 MODERN WOODMEN OF AMERICA—Tutilla Camp, No. 6399, meets first and third Saturdays of each month at Hendrick's Hall, George A. Hamblin, Consul; G. A. Robbins, Clerk.  
 W. of W.—REGULAR MEETINGS OF Pendleton Camp, No. 41, Woodmen of the World, are held in Odd Fellows' Hall every Tuesday evening. Visiting neighbors always welcome. J. P. Walker, Clerk.  
 REDMEN—UMAHALES TRIBE, No. 18—Meets every Tuesday night in Hendrick's Hall, Roy W. Rittner, Keeper of Records.  
 PENDLETON LODGE, NO. 52, A. F. and A. M.—Meets first and third Mondays each month. Joe H. Parkes, Secretary.  
 PENDLETON CHAPTER, NO. 23—T. C. Taylor, H. P.; F. E. Wamsley, Secretary. Meets first and fourth Friday of each month in Masonic Hall.  
 HONORERS OF THE PACIFIC—William Martin Encampment, No. 1, meets every Wednesday at Hendrick's Hall, Mrs. L. F. Lampkin, Secretary.  
 PENDLETON LODGE, NO. 288—B. P. O. 2183, Thomas Fitz Gerald, E. H.; L. W. Held, Secretary. Meets first and third Thursdays, Secret Society Hall.  
 DAMON LODGE, NO. 4—KNIGHTS OF Pythias, J. F. Nowlin, C. C.; R. W. Feecher, K. of R. and S. Meets every Monday in Secret Society Hall.

### MISCELLANEOUS.

IN FOUND—THE HEREINAFTER described stock has been taken up by the City Marshal and will be sold at the expiration of ten days for costs and expenses. One bay horse, age about 12 years, both hind feet white, black brand on left hip, weight about 850 pounds. Dated January 16, 1922. J. M. HEATHMAN, City Marshal.

HORSE TAKEN UP—BAY HORSE, BALD face, two white hind feet, one white front foot, weight about 1500 pounds, branded G on right shoulder, came to my place on butter creek. Owner can recover same by paying charges. T. H. Guilford, Ridge, Ore.



Customer—Say, do you work here, boy?  
 Office Boy—Only when the boss is lookin'.

### COMMERCE - TRADE

**Local Market Prices.**  
 The following shows the prices paid on the local market:  
 Turnips, 75c per sack.  
 Parsnips, 75c per sack.  
 Cabbage, 4c lb.  
 Green onions, per doz. bunches, 25c.  
 Cheese, per lb., 20c.  
 Onions, per cwt., \$2.  
 Beets, per lb., 1 1/2c.  
 Potatoes, per cwt., \$2.  
 Apples, per box, \$1.  
 Horse radish, 12 1/2c lb.  
 Garlic, 12c lb.  
 Sweet potatoes, 5c per lb.  
 Sauer Kraut, 40c per gallon.  
**Pendleton Livestock and Poultry.**  
 Chickens, hens, per doz., \$3.50 to \$4.  
 Roosters, \$3.50 to \$4.  
 Turkeys, per lb., 10c.  
 Geese, per doz., \$9.  
 Spring chickens, per doz., \$3.50.  
 Ducks, per doz., \$3.75.  
 Pigeons, per doz., \$1.50.  
 Eggs, 35c in trade.  
 Butter, 50c to 60c per roll.  
 Choice beef, cattle, etc.  
 Cows, per hundred, \$3.10.  
 Steers, \$3.60.  
 Hogs, live, 4 1/2c.  
 Hogs, dressed, 6c.  
 Calves, dressed, 7 to 8c.  
**Pendleton Retail Grocery Prices.**  
 Sugar—Cane granulated, best, \$6 per sack; do., 15 lbs, \$1; beet granulated, \$5.75 per sack; do. 16 lbs, \$1.  
 Coffee—Mocha and Java, best, 40c per lb; next grade, 35c lb; lower grades coffee, 25 to 15c lb; package coffee, 15c lb.  
 Rice—Best head rice, 12 1/2c per lb; next grade, 8 1/2c per lb.  
 Salt—Coarse, \$1.35 per 100; table, \$2.20 per 100.  
**Hides and Pelts in Pendleton.**  
 No. 1 dry hides, 13c per lb.  
 No. 2 dry hides, 8 1/2c per lb.  
 Green salted hides, 7c per lb.  
 Green unsalted hides, 6c per lb.  
 Sheep pelts, short wool, 25c each.  
 Sheep pelts, medium wool, 35c each.  
 Sheep pelts, long wool, 55c each.  
 No. 1 tallow, 3 1/2c per lb.  
 No. 2 tallow, 2c per lb.  
 Pendleton Flour, Feed, Hay, Etc.  
 Flour, \$2.50 per bbl.  
 Bran, \$13 per ton.  
 Shorts, \$15 per ton.  
 Barley, retail, 75c per 100.  
 Rye, retail, 90c per 100.  
 Oats, retail, \$1.15 per 100.  
 Wood, \$5.50 to \$6.  
 Chop barley, \$17 per ton.  
 Hay—Loose wheat, \$10 ton; baled wheat, \$15; timothy baled, \$18; alfalfa, loose, \$10; baled, \$15; rye hay on ranch, \$5 to \$6.  
**Hops, Wool and Hides.**  
 Portland, Jan. 16.—Hops—10 @ 12 1/2c per pound.  
 Wool—Nominal. Valley, 12@15c; Eastern Oregon, 8@12 1/2c; mohair, 21@21 1/2c per pound.  
 Sheepskins—Shearings, 15@20c; short wool, 25@35c; medium wool, 30@60c; long wool, 60c@\$1.  
 Tallow—Prime per pound, 4@4 1/2c; No. 2 and grease, 2 1/2@3c.  
 Hides—Dry hides, No. 1, 16 pounds and up, 15@15 1/2c per pound; dry kip, No. 1, 5 to 15 pounds, 15c; dry calf, No. 1, under 5 pounds, 16c; dry salted, bulls and stags, one-third less than dry flint; salted hides, steers, sound, 60 pounds and over, 8@9c; 50 to 60 pounds, 7 1/2@8c; under 50 pounds and cows, 7c; stags and bulls sound, 6@5 1/2c; kip, sound, 15 to 30 pounds, 7c; veal, sound, 10 to 14

pounds, 7c; calf, sound, under 10 pounds, 8c; green (unsalted), 1c per pound less; culls, 1c per pound less; horse hides, salted, each, \$1.50@2; dry, each, \$1@1.50; colts' hides, each, 25@50c; goat skins, common, each, 10@15c; Angora, with wool on, each, 25c@\$1.  
**Pelts—Bear skins, as to size, No. 1, each, \$5@20; cubs, \$2@5; badger, each, 10@40c; wildcat, 25@30c; house cat, 5@10c; fox, common gray, each, 30@50c; do red, each, \$1.50@2; do cross, each, \$5@15; do silver and black, each, \$100@200; fishers, each, \$5@6; lynx, each, \$2@3; mink, strictly No. 1, each, 30c@1.25; marten, dark, Northern, \$6@12; marten, pale, pine, according to size and color, \$1.50@3; muskrats, large, each, 5@10c; skunk, each, 25@35c; civet or polecat, each, 5@10c; otter, for large, prime skins, each, \$5@7; panther, with head and claws, perfect, each, \$2@5; raccoon, for large prime, each, 30@35c; wolf, mountain, with head perfect, each, \$3.50@6; wolf, prairie, (coyote), with head perfect, each, 40@60c; wolf prairie (coyote), without head, each, 30@35c; wolverine, each, \$4@7; beaver, per skin, large, \$5@6; do medium, \$3@4; do small, \$1@1.50; do kits, 50@75c.  
**Eastern Livestock.**  
 South Omaha, Jan. 16.—Cattle—Receipts, 28,000; market active, steady, 10c higher; native steers, \$4@6.80; cows and heifers, \$3@4.80; Western steers, \$3.80@5.40; Texas steers, \$3.40@4.40; canners, \$1.50@2.85; stockers and feeders, \$2.80@4.60; calves, \$3.50@4.50; bulls, stags, etc., \$2.25@4.50.  
 Hogs—Receipts, 85,000; market, 5 @10c higher; heavy, \$6.25@6.50; mixed, \$6.10@6.25; light, \$5.75@6.20; pigs, \$4.50@5.80; bulk of sales, \$6@6.30.  
 Sheep—Receipts, 30,000; market active, 10c higher; fed muttons, \$4.50@5.10; Westerns, \$3.75@4.40; ewes, \$3.25@4.60; common and stockers, \$2.75@4.75; lambs, \$4@6.10.**

It has been fully demonstrated that Ely's Cream Balm is a specific for nasal catarrh and cold in the head. This distinction has been achieved only as the result of continued successful use. A morbid condition of the membrane in the nasal passages can be cured by this purifying and healing treatment. Sold by druggists, or it will be mailed for 50 cents by the Ely Brothers, 56 Warren street, New York. It spreads over the membrane, is absorbed, and relief is immediate.

**I. L. Ray & Co.,**  
 Buy and sell  
**Stocks, Bonds  
 and Grain**  
 for cash or on margin.  
 New York Stock Exchange.  
 Chicago Stock Exchange.  
 Chicago Board of Trade.  
 Court Street, Pendleton, Ore.  
 Daily East Oregonian by Carrier, only 15 cents a week.

**HOTELS.**  
**HOTEL PENDLETON**  
 VAN DRAN BROS., Props.  
 The Best Hotel in Pendleton and as good as any.  
 Headquarters for Traveling Men. Commodious Sample Rooms.  
**Rates \$2 per day.**  
 Special rates by week or month. Excellent Cuisine. Every Modern Convenience. Bar and Billiard Room in Connection. Only Three Blocks from Depot.

**GOLDEN RULE HOTEL.**  
 Corner Court and Johnson Streets, Pendleton, Oregon.  
 M. F. Kelly, Proprietor.  
 HEATED BY STEAM. LIGHTED BY ELECTRICITY.  
 American Plan, rates \$1.25 to \$2.50 a day. European plan, 50c, 75c, \$1.00. Special rates by week or month.  
 Free Bus fleets all Trains. Commercial Trade Solicited. Fine Sample Rooms.  
 Special attention given Country Trade.

**Hotel St. George**  
 GEO. DARVEAU, Prop.  
 Elegantly Furnished Steam Heated.  
 European Plan. Block and a half from depot. Sample Room in connection.  
 Room Rate 50c, 75c, \$1.00.

**TRANSPORTATION LINES.**  
**O. R. & N.**  
 UNION PACIFIC  
**OREGON SHORT LINE AND UNION PACIFIC**  

DEPART FOR	Time Schedule From Pendleton	ARRIVE FROM
Chicago, Portland, Special 5:30 p. m. via Hunt-ington.	Salt Lake, Denver, Ft. Worth, Omaha, Kansas City, St. Louis, Chicago and East.	4:30 a. m.
Atlantic Express 5:10 a. m. via Hunt-ington.	Salt Lake, Denver, Ft. Worth, Omaha, Kansas City, St. Louis, Chicago and East.	11:00 p. m.
St. Paul Fast Mail 5:15 a. m. via Spokane.	Walla Walla, Lewiston, Spokane, Wallace, Pullman, Minneapolis, St. Paul, Duluth, Milwaukee, Chicago and East.	5:30 p. m.

**Ocean and River Schedule.**  
 FROM PORTLAND.  

Time	Destination	Frequency
All sailing dates subject to change. For San Francisco sail every 5 days.		4 p. m.
Daily except Sunday 8 p. m. Saturday 10 p. m.	Columbia River To Astoria and Way Landings.	4 p. m. Sunday

**Willamette River**  
 Boats leave Portland daily, except Sunday (stage of water permitting); for Willamette and Yamhill River points.  

Leave Riparia	Snake River	Leave Lewiston
4:30 a. m. Daily Except Mon	Riparia to Lewiston.	7:00 a. m. Daily Except Mon

 F. F. WAMBLEY, Agent, Pendleton.

**Washington & Columbia River Railroad**  
 Take this route for  
 For Chicago, St. Paul, St. Louis, Kansas City, St. Joe, Omaha, and All Points East and South  
**Portland and points on the Sound**  
**TIME CARD.**  
 Leave Pendleton, daily except Sundays at 6:30 p. m.  
 Arrive Pendleton Monday, Wednesday and Friday 11:25 a. m.  
 Arrive Pendleton Tuesday, Thursday and Saturday 9:30 a. m.  
 Leave Walla Walla daily, east bound 10:00 p. m.  
 Arrive Walla Walla daily west bound 9:25 a. m.  
 For information regarding rates and accommodations, call on or address  
 W. ADAMS, Agent, Pendleton, Oregon.  
 H. B. CALDERHEAD, G. P. A., Walla Walla, Wash.

**NORTHERN PACIFIC**  
**NORTHERN PACIFIC**  
 RUNS  
 Pullman Sleeping Cars, Elegant Dining Cars, Tourist Sleeping Cars  
 TO  
 ST. PAUL, MINNEAPOLIS, DULUTH, PABO, GRAND FORKS, CROOKTON, WINNEPEG, HELENA and BUTTE.  
**THROUGH TICKETS TO**  
 CHICAGO, WASHINGTON, PHILADELPHIA, NEW YORK, BOSTON  
 and all points East and South  
 Through tickets to Japan and China, via Tacoma and Northern Pacific Steamship Co. and American line.  
**TIME SCHEDULE.**  
 Trains leave Pendleton daily except Sunday at 6:30 p. m.  
 For further information, time cards, maps, and tickets, call on or write W. Adams, Pendleton, Oregon, or A. D. CHARLTON, Third and Morrison Sts., Portland, Ore.

**AMERICAN PLAN.**  
 50c per Day and Upwards.  
 Finest Hotel in the Pacific Northwest.  
  
**THE PORTLAND**  
 PORTLAND, OREGON.  
 Rates to Eastern Oregon people visiting Portland. Headquarters for tourists and commercial travelers.  
 H. C. BOWERS, Manager.