

Explains War Policies Set by Red Cross

Chairman Norman H. Davis, in answer to various inquiries as to the

present policy and activities of the American Red Cross in respect to the present policy and activities of the American war relief, issued the following statement:

"It is the policy of the American Red Cross to extend relief where it is most urgently needed providing it has the necessary freedom of action and safeguards for carrying out the distribution of its supplies to the actual victims, whether refugees or war wounded soldiers.

"At present there are three distinct areas where such need exists and where assistance has been requested: First, Great Britain; second, the unoccupied portion of France; and third, those territories under German occupation.

"With regard to the first we have

set up an American Red Cross committee in England and are sending medical, hospital equipment, clothing and other supplies, including food, as rapidly as tonnage is available.

"With regard to the unoccupied portion of France the SS McKeesport, loaded with all sorts of supplies and enjoying safe conduct from the British blockade authorities, is now headed for Marseilles where its cargo will be distributed to the millions of refugees and war wounded in southern France under the direction of American Red Cross representatives. In addition, a trainload of children's food is now enroute to the same region from Geneva.

"With regard to the third area, namely occupied territory, we have been extending aid in Poland with funds contributed for that specific purpose. This program is under American Red Cross supervision, thus safeguarding control over the ultimate destination of supplies. As for other occupied territories, aid to the sick and wounded and to refugees, particularly children, is being extended only in Paris and vicinity under the direction of Wayne Chatfield-Taylor, American Red Cross delegate, working in cooperation with the American hospital and the French Red Cross.

"Beyond this limited activity the American Red Cross is not extending any relief in the occupied portions of France. There are certain questions of policy and inherent difficulties, such as blockade, transportation, delivery and control of distribution which, at the present time, are most difficult of solution. The needs for relief which are daily increasing in the areas where we are now operating and in which we may operate in the future will require continuing large outlays.

"In this connection, I want to point out that none of the supplies of the Red Cross have been interfered with by any government or diverted from the needy for whom the supplies were intended, and the American people can rest assured that we do not intend to engage in any operations not adequately safeguarded and which do not give consideration to the wishes of those who have so generously contributed to the work."

Safe Driving Urged To Protect Children

Motorists should drive carefully in school zones despite the vacation season, because many school playgrounds remain open to provide places of recreation for children, it is pointed out by Dr. E. B. McDaniel, president of the Oregon State Motor association.

"Protection of school children during most of the year by the school safety patrols, with the additional influence of classroom instruction in traffic safety, impresses upon them the need for caution," the motorists organization president stated.

"These daily reminders are lacking, however, during the vacation season and children are apt to be-

come forgetful of safety rules and incline toward carelessness.

"This situation clearly places a greater amount of responsibility on the motorist who drives wherever children may be at play."

The statement also commented that parents can assist in protecting their children from traffic risks by emphasizing to them these rules:

Confine play to playgrounds, yards or sidewalks, for the street is a danger zone.

Look both ways before crossing a street or highway and cross only at intersections.

Never use roller skates on that portion of the street used by vehicular traffic.

Stay close to the right side of the road as near the curb as possible, when riding a bicycle.

Never solicit rides from motorists and when walking on highways keep to the left in order to face approaching traffic.

Blame of Forest Fires Laid at Fifth Column

Oregon has a large and dangerous fifth column that regularly sabotages her basic industry of lumbering, causing shutdown of lumber mills, loss of payrolls, a destruction of scenic beauty and wild life.

"This fifth column is nothing less than a large group of our own citizens who in other respects are exemplary in conduct but who fail utterly to observe the common rules of precaution with fire when they travel our highways or camp in our verdant forests," said N. S. Fogers, State Forester.

"Oregonians should quit talking about forest fires as a public enemy and bring the blame right to their own doors where it belongs. It's the hand that sets the fire that must be checked. For the most part these are the hands of unwitting, thoughtless persons who pride themselves on their loyalty to state and nation, but the results of their carelessness is just as costly as if they were avowed fifth columnists in the pay of enemy nations."

August W. Glutchny DOCTOR OF OPTOMETRY

Successor To Dr. Jud Rickert Specialist in all problems of eye comfort and vision 308 Fluhrer Bldg. - Phone 1148 Medford, Oregon

DR. I. H. GOVE DENTISTRY

Phone 872 J 419 Medford Bldg. Medford

WATCH REPAIRING

Larry Schade S. P. Watch Inspector Since 1918 21 S. Central—Next to Craterian Medford, Oregon

On this score, a fire warden in the west timber area reported the case of a motorist on the new Wolf Creek highway who stopped his car to survey the black desolation wrought by a recent fire. He shook his head in genuine sadness, called it a "blasted, dirty shame" and flipped a lighted cigarette stub into dry grass beside the highway as he drove on.

A careful study of the locale of major forest fires in the state show that a vast majority have started within 100 feet of highways, bearing out the state forester's contention that careless smokers and campers must be blamed for more than 40 per cent of Oregon fires.

For Sale: Fryers, dressed or alive, delivered if desired. Mrs. C. W. Hunt, Sardine Creek. Phone 463.

Read the advertisements in this paper for reliable places to trade.

ROXY

ALWAYS TWO FEATURES

Ends Saturday Night Richard Arlen - Andy Devine in "Tropic Fury" Plus Gene Autry in "Rovin' Tumbleweeds"

Sunday, Monday, Tuesday Full-Length Feature Cartoon in Technicolor!

"Gulliver's Travels" With "Gabby" and Seven Song Hits — plus —

"Ma! He's Making Eyes at Me"

Wednesday and Thursday Melvyn Douglas - Joan Blondell "Amazing Mr. Williams" — plus —

"Stop, Look and Love"

For The Tastiest In Foods

TRACEY'S STEAK HOUSE

GRANTS PASS, OREGON

Green Pine Slabs \$3.75 per 1 1/2 unit load

MEDFORD

Fill your car or trailer at our yard on the corner of North Central Avenue and McAndrews Road

TIMBER PRODUCTS COMPANY

Phone 7

End North Central

Conger Funeral Parlors

MEDFORD, OREGON

RELIABLE REASONABLE

Advertisers Live in

GLASS HOUSES

WHAT they promise in their advertisements, and what they deliver in their merchandise, are right there for all to see.

If they deliver what they promise, they make friends and steady customers. If not they make enemies, lose patronage and finally go out of business.

Those are the cold, hard reasons why honesty is the best policy—especially in advertising.

But the real fact is that advertisers as a class are humanly jealous of their good names. The trade-marks of manufacturers and the published recommendations of merchants are only accorded to products which they can offer you with confidence and pride.

You can trust the ads to lead you to sound values.

Courtesy Nation's Business

A Cool Place to Stop For Rest and Refreshment WHEN IN GRANTS PASS

Harris Super Creamed Shop

Take home Super Creamed Ice Cream in insulated bags Opp. First Nat'l Bank

FINAL CLEARANCE

This is the last week to save money at Lowell's SALE ENDS SATURDAY, AUGUST 3

27¢ SHOES 97¢

Good Honest Values in white and Print Sandles— Also 2 groups at \$1.97 and \$2.97

DRESSES 77c, \$1.67, \$1.97

These include all Spring and Summer Dresses We have a few \$10 values at \$3.67 and \$4.67

HATS 37¢ Blouses and Sweaters 97c to \$1.97

LOWELL'S

202 S. Sixth St. Grants Pass

A new Shoe Store In GRANTS PASS

To Serve You



Complete stocks of mens, womens & childrens shoes—including the famous Red Cross shoes for women and Weyenberg shoes for men. We place emphasis on fit and real values.

You are cordially invited to pay us a visit.

Check your fit our way with X-Ray at no extra cost

DEWEY'S

610 H. St

Grants Pass

Cooking Demonstration AT THE Rogue River Hardware Co.

AUGUST 2 and 3 - FRIDAY & SATURDAY

Demonstrating the HEALTHFUL WATERLESS COOKING METHOD

With Copper Clad Stainless Steel REVERE WARE

Your first cost is the last Cost - It lasts a lifetime

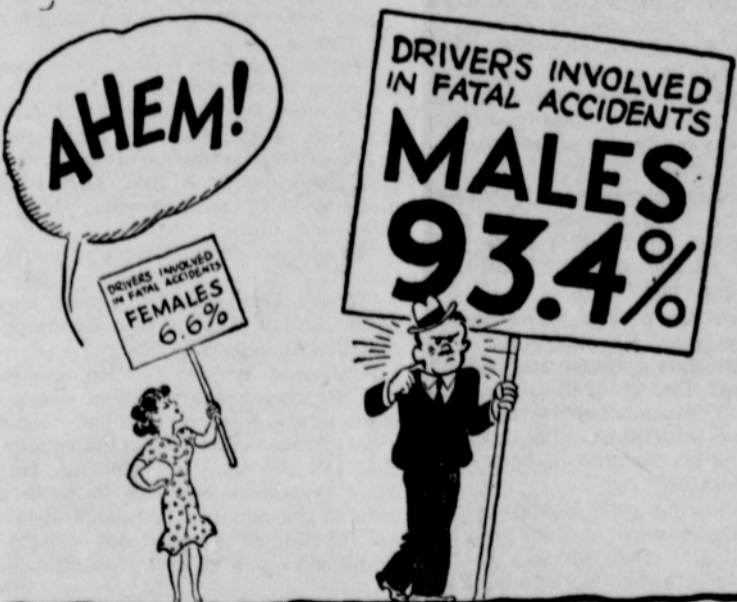
SEE IT DEMONSTRATED AT **Rogue River Hardware Co.**

Grants Pass

FRIDAY & SATURDAY, AUGUST 2 & 3

Any employee of the Rogue River Hardware Co. attending National Guard encampment will have his job waiting for him when he returns August 23

Male of Species More Dangerous Than Female



Women have the reputation of being worse drivers than men but where accidents are concerned, statisticians can find no figures to substantiate this popular belief.

These facts are revealed in a new booklet "Smash Hits of the Year" just issued by The Travelers Insurance Company as the tenth in its annual series of bulletins dedicated to street and highway safety.

Despite the fact that a Gallup Poll showed a large majority of persons feel safer riding with a man at the steering wheel, the company's statisticians found that

more than 90 per cent of all fatal and non-fatal accidents in 1939 involved male drivers. Where fatal accidents alone are considered, the female of the species has an even better record, being charged with the responsibility for less than seven per cent.

The answer undoubtedly rests in the fact that a greater number of men drive more miles each year and under more hazardous conditions, the article concludes. No method has yet been found to determine the relative risks faced by males and females and until such data are available no one can say with accuracy which sex is safer at the wheel.