



**FROM THE ARCHIVES**

**Williams**

continued from page

and banking industries, left Portland's Black community segregated, ghettoized and, finally, scattered.

And the same thing happened all over the country.

"In cities across the nation, urban power brokers, with the help of the federal government, eagerly engaged in central-city revitalization after World War II,"

na, so there was very little difference other than geographic difference," said early civil rights leader Otto Rutherford, in 1978.

Gibson says her historical research uncovered a memo penned by a PDC official reassuring the federal Housing and Urban Development department about racial concerns in tearing out the homes and businesses for

based," Gibson said.

"The whole thing has to do with race, and it has to do with real estate.

"White privilege means something – it means a difference in wealth and the fact that you could just come in and take over the boulevard," Gibson said.

**Housing Destroyed Despite Promises**

When the PDC, city of Portland officials and the federal Model Cities program rolled out the endgame on tearing down Albina homes and businesses for Emanuel's expansion in 1971, many local residents did not realize the plans had been laid years before, according to "History of Portland's African American Community."

The Emanuel Displaced Person's Association was founded by Mrs. Leo Warren in 1970 after locals "were abruptly confronted with the expansion plans." The city required residents to move out within 90 days, offering homeowners a maximum \$15,000 payment and renters a maximum \$4,000.

A much-hyped agreement

See WILLIAMS on page 15

"Oregon was a Klan state—it was as prejudiced as South Carolina"

—Karen J Gibson, "Bleeding Albina"

Gibson wrote in "Bleeding Albina." "Luxury apartments, convention centers, sports arenas, hospitals, universities, and freeways were the land uses that reclaimed space occupied by relatively powerless residents in central cities, whether in immigrant White ethnic, Black, or skid row neighborhoods."

The study includes quotes from oral histories gathered decades earlier about the region's history.

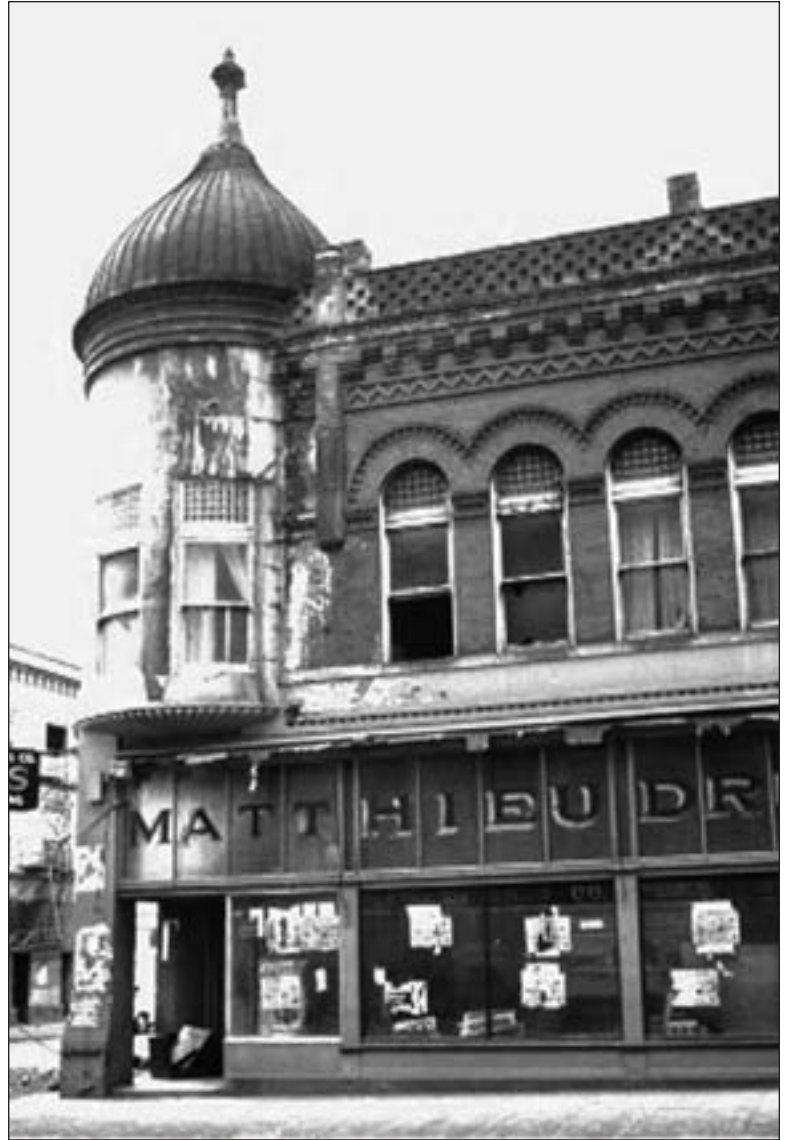
"Oregon was a Klan state—it was as prejudiced as South Caroli-

Emanuel Hospital expansion in the early 70s.

"The whole transition has been racial," Gibson told The Skanner News this week. "People paid taxes in Albina – what did they get for their taxes?"

In 1956 area banks could legally deny loans to any Black customer who applied, making the NAACP Credit Union — one of North Williams' lost storefronts – a particularly poignant marker.

"Race was used, and the stagnation and redlining was racially



North Williams cuppola building, 1975

**Check Out  
The Skanner  
Turn-the-  
Pages  
WebPaper**



www.theskanner.com home page: click the "Full Print Version Online" button to view our full



newspapers, just like they are printed. All you do is 13 click to turn the pages and click to zoom.

**Help Shape Your Future!**  
Turner School of Construction Management

For over 43 years Turner has offered this program nationally at no cost to minority-owned, women-owned, and small emerging construction business owners. Individuals enrolled in the program gain insights and meaningful tools that help them target their business for quality and growth while developing new strategic business relationships.

Help Shape Your Future and enroll in the Spring 2012 program. If you would like to receive an application, please contact Marilyn Morrison, mmorrison@tcco.com.



www.turnerconstruction.com/portland • (503) 226-9825  
'Like' us! Turner-Construction-Company-Portland

