

Risk

continued from page 10

Center at the University of Alabama.

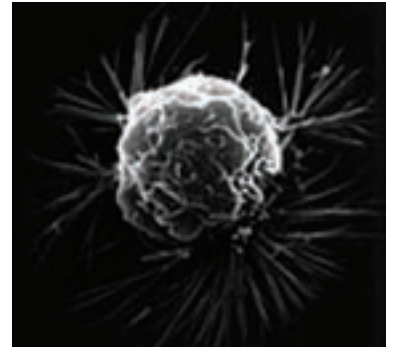
Rao received the 2005 Science Spectrum Emerald Honors Senior Investigator Award, the 2006 Science Spectrum Trail Blazer Award, the 2007 Women of Color

in Technology Research Leadership Award and the 2008 North American Konkani Association Outstanding Achievement in Science Award. She also received the Georgia Cancer Coalition Distinguished Cancer Scholar award. In 2009, she was

appointed as an editorial board member of the BENTHAM Open Breast Cancer Journal and in 2011 as an editorial board member of the World Journal of Translational Research and Hereditary Current Research. In 2011, she received the ASIOA Mario Toppo distin-

guished scientist Award for her work on Breast cancer and she is the first woman to receive this award.

For more information on scientific discoveries at Morehouse School of Medicine, visit www.msm.edu.



Classifieds



ADMINISTRATIVE ASSISTANT

Outstanding non-profit seeks individual to support Communications and Events depts. Complete posting, job description, application and application process at www.oregonfoodbank.org. Deadline 10/13/11. EOE.

OREGON FOOD BANK IS AN EQUAL OPPORTUNITY EMPLOYER

10-05-11



COMMUNITY CLINICS PATIENT SERVICES COORDINATOR

National College of Natural Medicine seeks to fill this full-time, benefited position which is responsible for services surrounding the delivery of care to NCNM's community clinic patients, including referral coordination, handling of medical records and promotion of the clinics in the general community. Full job description and application details can be found at www.ncnm.edu. Closes 10/12/11 EOE

10-05-11



PAINTER

WA State Convention Center (WSCC) is accepting applications for **Painter** position. Responsible for application and maintenance of paints and other finishes on interior and exterior surfaces of the facility. High School diploma or GED & 4 yrs exp in commercial painting trade at a journey-level status required. Successful completion of technical training program in commercial painting and/or an approved apprenticeship program in painting preferred.

Visit www.wsc.com for further info or to download an application. Apps are also available at the WSCC Service Entrance, 9th and Pike, Mon-Fri, 8:00 a.m. - 5:00 p.m. Jobline: (206) 694-5039. EOE.

9-28-11



COMMUNITY INFORMATION SPECIALIST FOR SOCIAL SERVICES HELP LINE

211info seeks a community information specialist for its Portland call center. **211info** connects the people of Oregon and Southwest Washington with the social services they need by helping callers navigate the maze of low-cost health care, assistance programs, shelters, food pantries, foreclosure prevention counseling, employment, education and mental health programs.

The Community Information Specialist provides excellent customer service to diverse callers. The Specialist interviews callers, scans a database for resource information and engages in creative problem-solving. 211info's work is compassionate, fast-paced and efficient. Bilingual skills preferred.

To view the job description or to apply, go to www.211info.org.

Salary: \$13.52 hourly starting pay

10-05-11



ELECTRICAL FOREPERSON

WA State Convention Center (WSCC) is accepting applications for an **Electrical Foreperson** position. Responsible for diagnosis, installation, repairs & maintenance of electrical equipment. High school diploma or GED. Requires min. of 4 yrs exp in electrical trade at a journey-level electrician status. Must be a licensed journey-level electrician.

Visit www.wsc.com for further info or to download an application. Apps are also available at the WSCC Service Entrance, 9th and Pike, Mon-Fri, 8:00 a.m. - 5:00 p.m. Jobline: (206) 694-5039. EOE.

10-05-11

COMMUNITY TRANSIT PUBLIC NOTICE

REVISED DBE GOALS

Notice is hereby given, pursuant to the US Department of Transportation, Federal Transit Administration, 49 CFR Part 26, that Community Transit has developed a proposed goal of five (5) percent for Disadvantage Business Enterprise (DBE) participation for federal fiscal years 2012 - 2014.

Individuals and organizations are invited to comment on the proposed goal by contacting Gerhild Turner, Procurement Supervisor, by calling (425) 348-2308 or in writing to Community Transit, 7100 Hardsen Rd., Everett, WA 98203-5834 or email to gerhild.turner@commtrans.org.

Comments regarding the proposed DBE goals will be accepted until November 20, 2011.

10-05-11



OPEN POSITIONS AT LIFEWORKS

View all open positions at LifeWorks NW or apply online: <http://www.lifeworksnw.org>

Be a vital part of a leading non-profit organization that values a diverse workforce and provides quality culturally-responsive mental health & addiction treatment, prevention & related service to children, adults & families in the Portland Metro area.

Open positions include:

- * Bilingual Child Care Provider, On Call
- * Chemical Dependency Counselor
- * Child and Family Therapist, On Call
- * Child Care Provider, On Call
- * Clinical Supervisor
- * Dual Diagnosis Therapist
- * Maintenance Technician
- * Mental Health Therapist, On Call
- * Office Support Specialist
- * Residential Treatment Home Mental Health Associate, On Call - 170, 171
- * Residential Care Facilitator, On Call
- * Residential Manager
- * Respite Provider, On Call
- * Service Coordinator 2
- * Supported Employment Specialist
- * Treatment Foster Care Parent

Equal Opportunity Employer

10-05-11



HOME ENERGY ASSESSOR

Hammer & Hand seeks a Home Energy Assessor to join its growing Home Performance division.

For more info visit <http://bit.ly/pyCcMB>

EOE. Women and minorities encouraged to apply.

10-05-11



CITY OF CAMAS, WA

POLICE OFFICERS (ENTRY-LEVEL AND LATERAL) Salary \$4865-5810/month

Application, complete job description and additional testing information available online at www.ci.camasa.wa.us/admin/jobs.htm **Deadline: 5pm, Wednesday, October 26.**

10-05-11



City of Portland CRIME PREVENTION COORDINATOR

Approx Mo Sal: \$3694 - \$4812 Monthly FFD: 10/24/11

Designs, implements and manages specialized crime prevention and community education programs located in City neighborhoods. Duties include designing, developing, implementing and managing programs and funding to address the special needs of a vulnerable population or a specific geographical area and representing the Office of Neighborhood Involvement and the City to the community, outside agencies and the public on specialized crime prevention issues. This is a half time, job share, (.5 FTE), (20 hours/week) position. For more info and to apply online go to: www.portlandoregon.gov/jobs/ City of Portland is an Equal Opportunity Employer

10-05-11



Job Opportunities

We are seeking qualified candidates to be part of our dynamic public service organization.

JOURNEY LEVEL CARPENTER
\$30.22 /Hr

DEVELOPMENT ENGINEERING PROGRAM COORDINATOR
\$4,596 - \$6,545 /Mo

HUMAN RESOURCES MANAGER
\$5,463 - \$7,781 /Mo

INVESTMENT ANALYST, SENIOR PART-TIME
\$2,415 - \$3,440 /Mo

REAL PROPERTY SERVICES MANAGER
\$5,463 - \$7,781 /Mo

Job information, applications and benefits information are available from:

Clark County Human Resources
1300 Franklin St, 5th Fl
Vancouver WA

Apply On-line @ www.clark.wa.gov
Job Info Line:

(360) 397-6018
Relay (800) 833-6388

Equal Opportunity Employer