

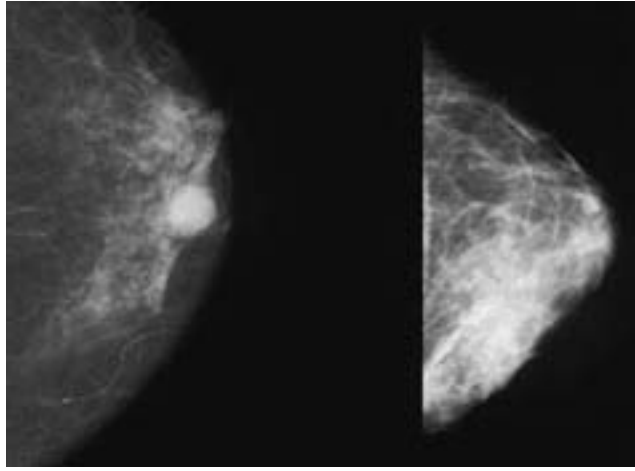
Breast Cancer: Why African-American Women are at Greater Risk

Morehouse School of Medicine's latest research explains why African-American women are at greater risk of developing more aggressive and difficult-to-treat forms of breast cancer. Conducted by Veena N. Rao, Ph.D., co-director of the Cancer Biology Program at the Morehouse School of Medicine, the research provides the empirical evidence for what many long thought to be true.

"Morehouse School of Medicine focuses our research on signature areas that disproportionately affect minority communities including cardiometabolic diseases, HIV/AIDS, neurological disorders and cancer," said Valerie Montgomery Rice, M.D., dean and executive vice president of Morehouse School of Medicine. "Dr. Rao's discovery is in line with our mission to better understand health inequities and developing a cure."

While white women are slightly more likely to get breast cancer, African-American women are more likely to develop aggressive breast cancers with lesser-known treatments and more likely to die from the disease, according to the American Cancer Society. Breast cancer is the second most common cause of cancer-related death among African-American women. The American Cancer Society estimated more than 6,000 African-American women will die of breast cancer in 2011.

cer-related death among African-American women. The American Cancer Society estimated more than



6,000 African-American women will die of breast

in Volume 226, Issue 12, of the Journal of Cellular Physiology. Her study could lead to the discovery

of novel biomarkers that can predict disease progression and validate the increased risk for African-American women in developing these aggressive breast cancers.

Rao's research findings reveal why young African-American women with triple negative breast cancers who have cytoplasmic mislocalization of BRCA1 proteins often develop BRCA1-associated hereditary and sporadic breast cancers. The function of the BRCA genes is to repair cell damage and keep breast cells growing normally. But when these genes contain abnormalities or mutations that are passed from generation to generation, the genes do not function normally

and breast cancer risk increases.

Following the discovery of the breast cancer gene in 1994, researchers have come a long way in unlocking how various forms of breast cancer develop and creating targeted treatment therapies. Rao has spearheaded numerous breakthroughs in breast cancer research including the identification of short form BRCA1 proteins known as BRCA1a and BRCA1b – which are expressed at reduced levels in breast and ovarian cancers. Her team was the first to show mere down regulation of expression of BRCA1 in normal cells results in cancer, BRCA1 nuclear cytoplasm shuttling is a regulated process, BRCA1a induces cell death in breast cancer cells and the first to introduce BRCA1a into triple negative breast cancer by gene therapy and successfully block tumor development in mice. Since she began her lab work in 1994, Rao has received four patents for her research findings.

"We are showing for the first time that the exclusive non-nuclear distribution of mutant BRCA1 and BRCA1a proteins cause deregulated Ubc9 resulting in breast cancer" said Rao. "BRCA1 serves as a master switch which, by turning off or on Ubc9 binding, controls estrogen receptor activity and cell growth. This discovery will change the current understanding of how BRCA1 functions as a

New Research from Morehouse School of Medicine Shows Why African-American Women May Be At Greater Risk for Aggressive Breast Cancer

cancer in 2011.

Rao is professor and co-director of the Cancer Biology Program, in the department of obstetrics and gynecology at Morehouse School of Medicine and her latest research is published

Dr. Veena Rao's latest study provides research to further explain minority cancer health disparities

tumor suppressor by bringing in novel concepts and new directions."

Other researchers participating in this study include Shyam P. Reddy, Ph.D., professor and co-director of the Cancer Biology Program and Georgia Cancer Coalition

Distinguished Cancer Scholar; Qin Yulong, M.D., PhD; Jiang Xu, M.D., Kartik Aysola, B.S; Nurjahan Begum, M.D., PhD; and Yuli Chai, M.D., William E. Grizzle, M.D., and Edward E. Partridge, M.D., director of the Comprehensive Cancer

See RISK on page 11

Bids/Classifieds

To place your ad, email

advertising@theskanner.com

ADVERTISEMENT FOR BID

Allen Hall Expansion & Remodel Bid Package #2.10 University of Oregon, Eugene, Oregon

Advertisement for: **University of Oregon – Allen Hall Expansion & Remodel**

Lease Crutcher Lewis, LLC, serving as the Construction Manager/General Contractor (CM/GC) for the University of Oregon is soliciting bids for the construction of the Allen Hall Expansion & Remodel in Eugene, Oregon. Terms and conditions of the bid are outlined in Lease Crutcher Lewis, LLC (CM/GC) "Invitation to Bid", dated October 4th, 2011, attached to and made a part of the Contract Documents.

Bids will be received at the offices of Lease Crutcher Lewis, LLC (CM/GC), 600 SW 10th Avenue, Suite 310, Portland, Oregon 97205, until 2:00 P.M. PST, October 18th, 2011 at which time the bids will be publicly opened and read aloud. Proposals shall be clearly marked "Allen Hall Expansion & Remodel"

The total construction cost for Allen Hall Expansion & Remodel is projected to be approximately \$12.5 Million.

The scope of work for Bid Package #2.10 includes: Masonry & Precast.

Contract Documents and the Invitation to Bid may be reviewed at the following locations: Lease Crutcher Lewis, LLC (CM/GC)/Portland, OR; Daily Journal Plan Center/Portland, OR; Eugene Builders Exchange/Eugene, OR; Willamette Valley Builders Association/Tangent, OR; Oregon Assoc. of Minority Enterprises/Portland, OR; Oregon Contractors Plan Center/Clackamas, OR; Salem Contractors Exchange/Salem, OR; S.W. Washington Contractors Assoc./Vancouver, WA; Builders Exchange of Washington/Everett, WA.

Contract Documents may be purchased (non-refundable) in its entirety or in part from Precision Images, (503) 274-2030.

All proposers must comply with the following requirements: Prevailing Wage Law, ORS 279C.800-279C.870, Licensed with Construction Contractors Board ORS 671.530. Bidder shall indicate Resident Status per ORS 279A.120. If Required, Bidders must obtain business licenses to perform work in the City of Eugene prior to mobilizing on jobsite.

Bids will not be considered unless RECEIVED by 2:00 P.M. PST on October 18th, 2011, and fully completed in the manner provided by the "Instructions to Bidders"

"NOTICE OF REQUIREMENT FOR AFFIRMATIVE ACTION TO ENSURE EQUAL EMPLOYMENT OPPORTUNITY (Executive order 11246)";

Lease Crutcher Lewis, LLC (CM/GC) is committed to taking affirmative action to encourage and facilitate the participation of minority, women-owned, and emerging small business enterprises (M/W/ESBE) in State projects and encourage Subcontractors to provide similar opportunities for their subcontractors / vendors.

LEASE CRUTCHER LEWIS, LLC, (CM/GC)

10-05-11

We honor the many accomplishments of African Americans.



It is our primary goal as a labor union to better the lives of all people working in the building trades through advocacy, civil demonstration, and the long-held belief that workers deserve a "family wage" – fair pay for an honest day's work.

A family wage, and the benefits that go with it, not only strengthens families, but also allows our communities to become stronger, more cohesive, and more responsive to their citizens' needs.

Our family wage agenda reflects our commitment to people working in the building trades, and to workers everywhere. In this small way, we are doing our part to help people achieve the American Dream. This dream that workers can hold dear regardless of race, color, national origin, gender, creed, or religious beliefs.



The Pacific Northwest Regional Council of Carpenters

Representing more than 5,000 construction workers in Oregon state.

Do you want to know more about becoming a Union carpenter? Go to our website at www.nwcarpenters.org

Offices in Portland
1636 East Burnside
Portland, OR 97214
503.261.1862 • 800.974.9052

Headquarters in Kent, WA
25120 Pacific Hwy S, Ste 200
Kent, WA 98032
253.945.8800 • 800.573.8333