

House of the Week

Modern Bi-Level Has Stately Grace

By JULES LOH
Of the Associated Press

To complete the picture all this house needs is a white jacketed butler standing at the massive double doors beneath those stately columns. You almost can catch the aroma of magnolia and mint julep.

The elegant circular staircase in the entrance foyer adds another touch on antebellum charm. So does the grand fireplace in the living room, and the luxurious balcony stretching across the rear.

But there are visions of the 19th century end, because the room arrangement and over-all interior layout of this house was designed clearly to meet space age needs — including the high cost of living.

The house is the product of imaginative and economy-minded architect Lester Cohen. It is design J-70 in the House of the Week series.

oversized two-car garage complete with a hobby alcove.

All this is packaged efficiently in a basic area of 1,667 square feet and over-all dimensions of 60' wide by 29' deep.

The exterior is Southern traditional, a style characterized by both grandeur and warmth. Architect Cohen used white painted brick to highlight the wings in front. Double windows on the main portion of the house, shutters on all windows and a flagstone portico and front walk complete the picture.

Circulation of traffic throughout the house is excellent. Both the living room and dining room occupy "dead-end" positions so neither has to be used as a passageway. The main level has a side entry in addition to the mid-level main entry, and there are two exterior entries to the lower level—through the garage and from the rear terrace to the recreation room.

Additional Details

The open spiral staircase besides being an exquisite feature in itself also eliminates the "closed" feeling of many split-entry foyers. In this house there is clear vision both up and down the six-step flights; and from the



living room the stairway provides an added touch of formality.

Another nice feature is the rear balcony. There is direct access to it from the master bedroom as well as the living and dining rooms, and at the latter the balcony is wide enough for outdoor dining. Moreover the balcony serves as an outdoor link between the living and dining rooms, an especially good feature on

occasions of formal entertaining.

Dominating the living room is the fireplace, with a built-in television or hi-fi cabinet beside it.

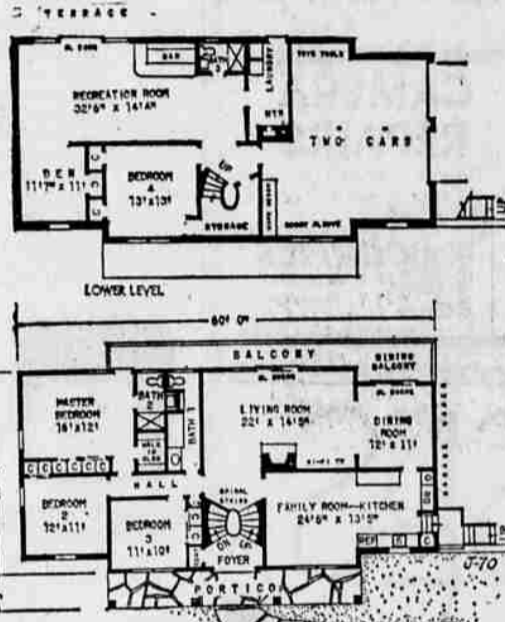
The family room-kitchen, more than 24' from end to end, is well placed at the front of the house and has a side entrance which probably will get more use than the main entry.

Three bedrooms are on the main level, plus a family bath-

room that is truly family size. The master bedroom has its own adjoining bath with stall shower; and the plumbing is back-to-back for economy. All the bedrooms have ample closet space.

Downstairs is a fourth bedroom and a third full bath—an excellent arrangement for guests or in-laws if the family doesn't need the extra sleeping space.

Storage facilities are excellent throughout this house. One area that might be overlooked is the lower level space beneath the spiral staircase. Closets are abundant; a nice sized one on the mid-level foyer, a corner closet near the service entry, and plenty of shelf space in the garage.



Floor Plans

There are 10 rooms in this house, in a basic area of 1,667 square feet and over-all dimensions of 60' wide by 29' deep. Note the abundance of storage space—not only closets but also the large area beneath the spiral staircase and the extra shelf room in the oversize garage.

Decor Hints Told For Small Rooms

NEW YORK (UPI)—Smaller room sizes are making it increasingly difficult to get proper proportion in interior decorating schemes, according to a New York interior designer.

Designer Jay Dorf makes these suggestions to cope with decreased space:

- Bring the eye down and keep it there. This means low scale—low-backed chairs, low tables, low everything.
- Create an illusion of height by using vertical lines, placing pictures lower on the wall and hanging light fixtures low.
- Use diminutive accessories: low and petite flower arrangements, short candelabra

and candles and small scaled lamps.

- Sculptured works and other art objects should be delicate and unobtrusive.
- Use area rugs to focus the eye on a small area, while still leaving a good deal of floor space showing.
- Keep walls and ceilings light, and alternate light and dark shades throughout the room. Use the darker shades on larger units.

DISCOUNT PLUMBING STORE

REPLACEMENT WATER HEATER
52 Gal. Glass Lined
Installed \$79.50

PROMPT Service Calls
Sales and Contracting
THE ONLY PLACE TO GO...

BULLAT
PLUMBING-HEATING
AND SUPPLIES
3117 West 7th Place
DI 4-3071 DI 4-3071

Septonic Septonic
For Healthy SEPTIC TANKS
CESSPOOLS AND DRAINS
CHEMICAL TOILETS IN FALLOUT SHELTERS

Use SEPTONIC Regularly!
Keeps tank working, odor-free. Easy to use. Fast, safe, harmless to plumbing. Costs only 28¢ per 500-gal. tank. Money back guarantee! 4 Treatments At Your Grocer or Hardware

\$1.49

Guard against soil pests before you plant

with dieldrin seed treatment

Before your seed hits the soil, you can start control of soil insects. Use a dieldrin seed treatment. Dieldrin can be applied along with fungicides or you can use it separately.

Eliminate spotty stands and get bigger profits at harvest. Order your dieldrin now!

SEE YOUR LOCAL STAUFFER DEALER
STAUFFER CHEMICAL COMPANY
Western Offices: San Francisco • Los Angeles • N. Portland
Glendale, Ariz. • Fresno • Bakersfield

J-70 Statistics

A 10-room bi-level home containing three baths, four bedrooms, family room-kitchen combination, living room, dining room, built-in garage, recreation room, laundry, den. Basic area is 1,667 square feet in over-all dimensions of 60' wide by 29' deep.



Beautiful Shower Doors and Tub Enclosures

MIDGLEYS
MILLWORK & GLASS
4th & High DI 3-1131

YOU do it we show YOU
SHOP AND COMPARE
THRIFTWAY
FLOOR COVERING
1633 W. 62nd DI 3-1413

SWAN Vectorray
Electric Baseboard Heating
For Low Cost Luxury
Brighter Homes
Electrical
855 West First Ave.
DI 4-3231

REPLACEMENT SPECIAL
52 GALLON
GLASS LINED
WATER HEATER

84⁵⁰ INSTALLED

10 YEAR WARRANTY
Clarence Vos
Plumbing Inc.
742 Monroe DI 5-8577

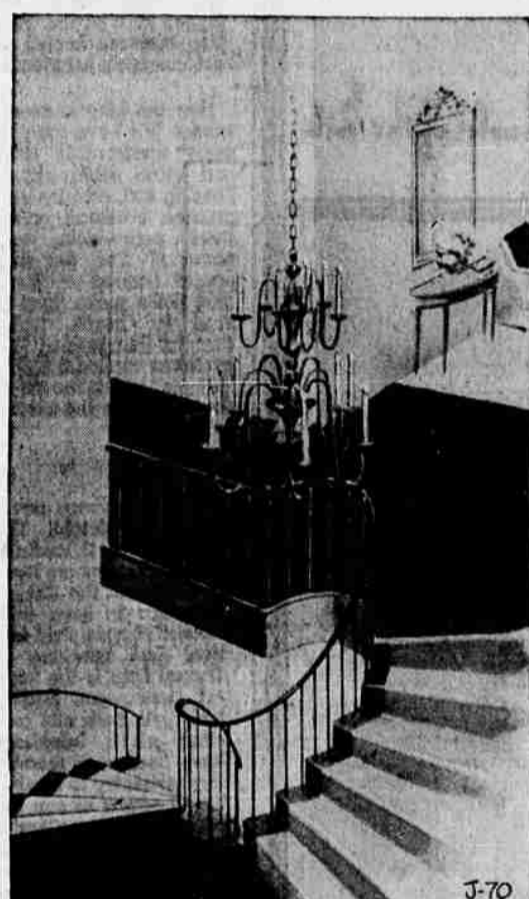
He's started on his way to home ownership

by don herold

You'll be amazed at the new verve you'll feel when you've started to buy a home with the help of a Christianson loan. It may be one of your first moves in life towards real substantial status and security.

The monthly payments will come with surprising ease. Christianson will spread them over many years, so no one payment will be a sock in the eye for you. And each month's payment can clean up a month's interest as you go, as well as 1/12th your year's taxes and insurance.

M. S. Christianson... MORTGAGE AND INVESTMENT CO.
1241 Oak St., Eugene, OR 5-0305
With Branch Offices
210 Monroe, Corvallis 1005 E. Main, Medford
Construction Funds Available



Spiral Stairs
The dramatic spiral staircase in this house not only is exquisite in itself but also serves the purpose of eliminating any "closed" feeling found in many split-entry foyers. There is clear vision both up and down the six-step circular flights.

Eugene Register-Guard
Building Editor:
Enclosed is 50 cents. Please send me a copy of the study plan of the House of the Week, J-70.

NAME _____
STREET _____
CITY _____ STATE _____

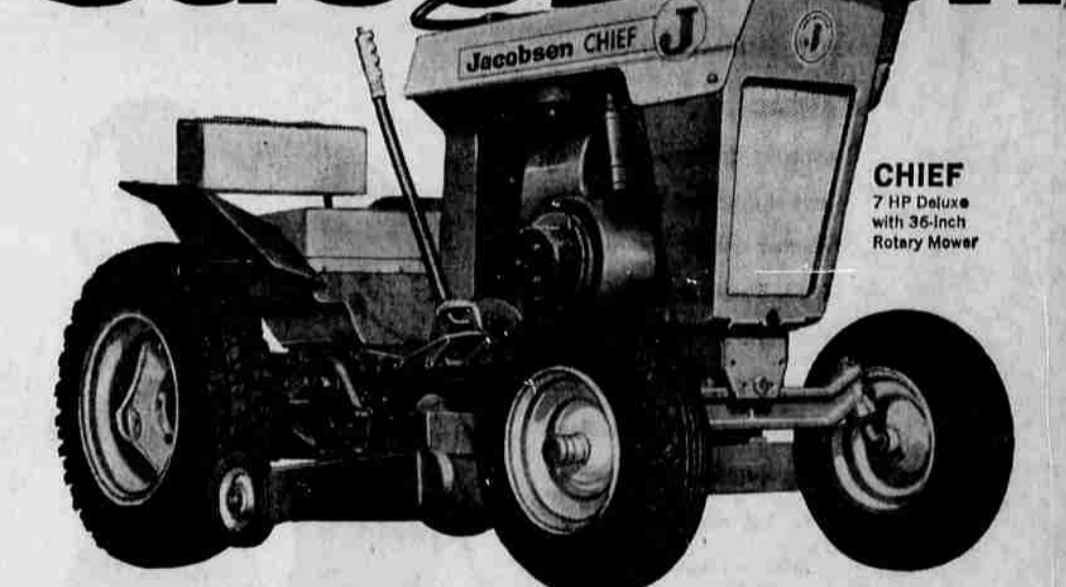
IN THE DARK?
We Specialize in Quality Homes. Honestly Presented for THRIFTY PEOPLE

Over half a century of experience has gone into providing a COMPLETE home planning, financing development & Building Service under one low overhead roof.

SEE OUR FURNISHED MODELS
Smith Built Homes
HONESTY QUALITY & SERVICE

River Road 1033 W. Hilliard DI 4-4213
So. Eugene 1900 Chambers DI 3-7501
Cottage Grove 626 Jefferson St. WH 3-9057

Jacobsen



NEW COMPACT ALL-PURPOSE CHIEF TRACTORS ... OVER 30 MATCHED WORK-SAVERS!

GANG MOWERS POWER TILLER 10' PLOW DUMP CART DOZER BLADE

GRASS MOWING! GARDEN WORK! Yard chores! Lawn care! Work-saving, quick-hitch Chief Tractor attachments make these and many other big jobs easy! The Orange Jacobsen Chief is engineered for smooth precision performance, maneuverability, rugged fugging power. Car-type all-gear transmission, finger-ease steering, 6 hp, 7 hp Deluxe and Standard and 3 1/2 hp models. See them now! Choose from 4 new Jacobsen Chief All-Purpose Tractors. Low down payment—easy budget terms!

Over 30 Chief Attachments also include: Front Reel Mower, 3 and 5-Gang Reel Mowers, Lawn Roller, Spiker Aerator, Tow-Behind Power Sprayers, Disc Harrow, Cultivator, Spike Tooth Harrow, Front & Rear Floodlights, Lawn Spreader, Planet Jr. Planeflter with Attachments, Wheel Weights, Dual Wheels, Mars Broom, Hydraulic Lift System, Power Take-Off, Tool Bar, Front End Loader, Power Rake.

BREWERS INC.

SEE THE JACOBSEN DEALER NEAREST YOU!

Wright's Hardware
130 North Fifth Springfield RI 6-1638

Wolford Equipment
330 Pacific Hwy. South Cottage Grove WH 2-3452

Loggers Chain Saw
3748 Franklin Blvd. Eugene PA 6-7521

Eugene Hardware
2825 Willamette Street DI 5-3412

J&J Garden Equipment
1859 Franklin Blvd. Eugene DI 3-1923