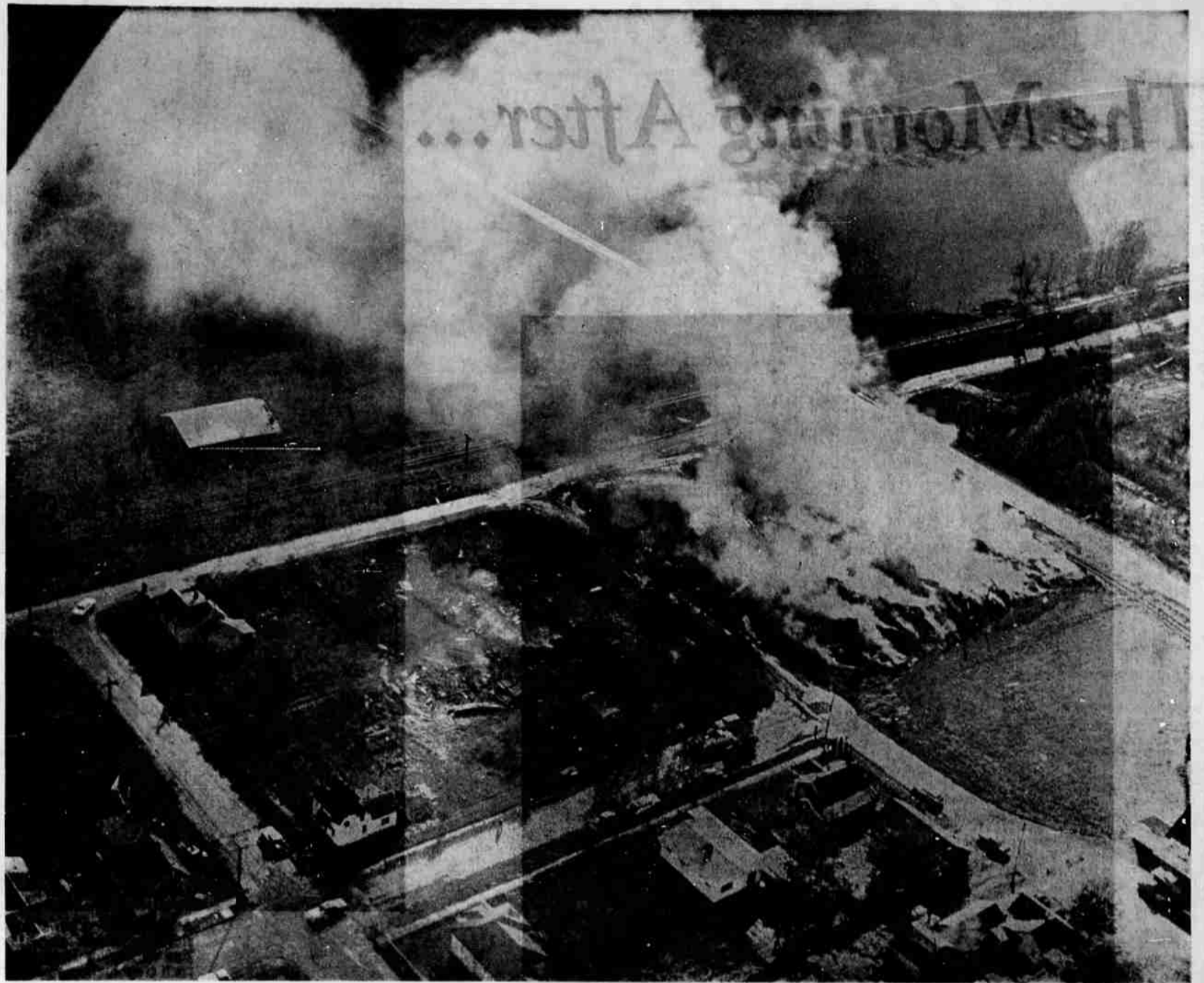
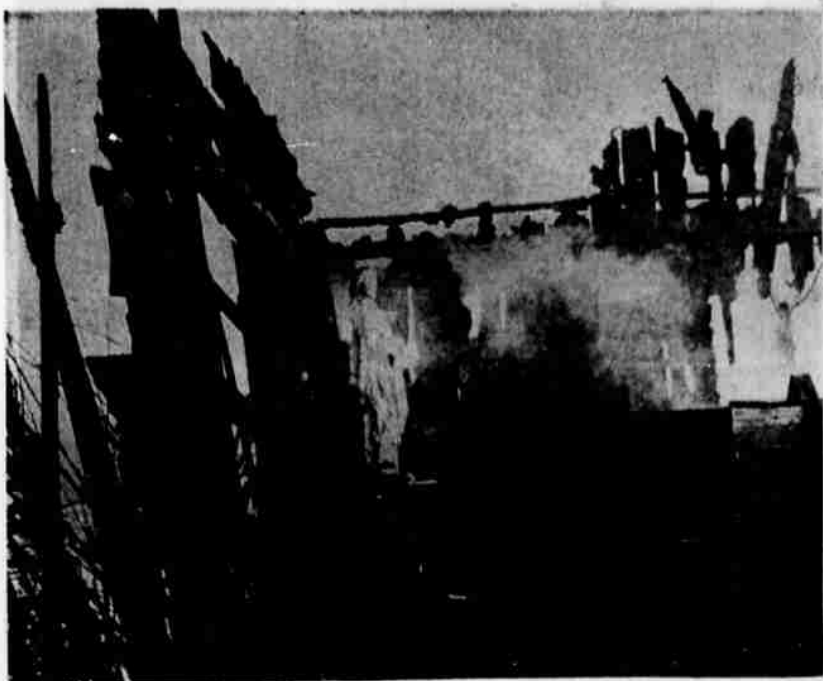


Flames Level 2 Blocks



In Junction City

In a period of two hours Friday evening Junction City experienced the worst disaster in its history. Flames fanned by high winds destroyed a two-block area in the southeastern portion of the city. From the top clockwise are: An aerial view of the burned out area taken at 9 a.m. Saturday; a boxcar loaded with "mill run" grain still was burning 15 hours after the warehouse fire began; furniture moved into the street so it wouldn't receive water damage from fire hoses was soaked by rain instead before it could be removed from the street; the brick from this fireplace and chimney was the only salvageable material from one the six houses declared a total loss; Mrs. George (Amelia) Wilhelm tried to get someone to help her remove this religious statue from her home at 222 Greenwood St. but Saturday it stood stoically in the corner amid charred debris; photo of the warehouse at the height of the fire was taken by Eugene businessman E. Lynn Harris. The view is looking toward the northeast.



... After a grim Monday