

'Sturdily Built as Your Permanent Home

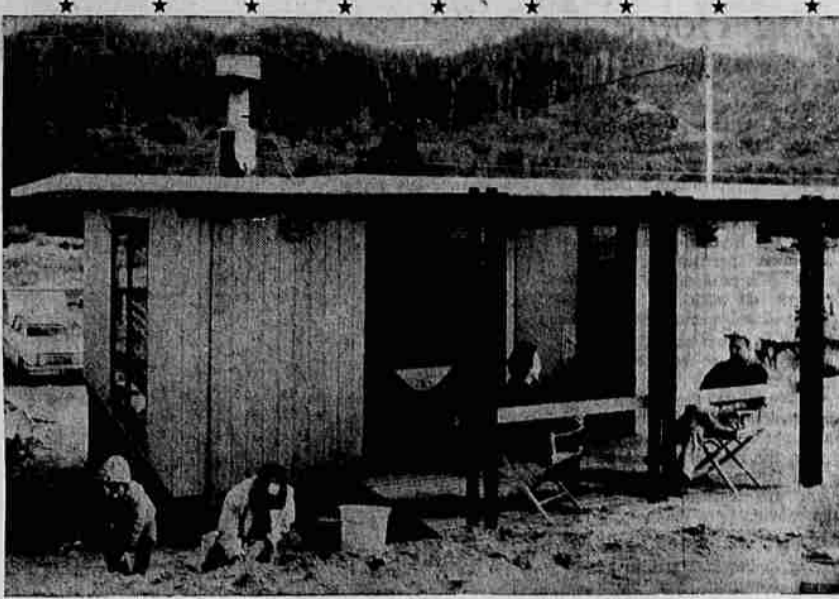
# This Vacation Cabin Comes in Do-It-Yourself Kit



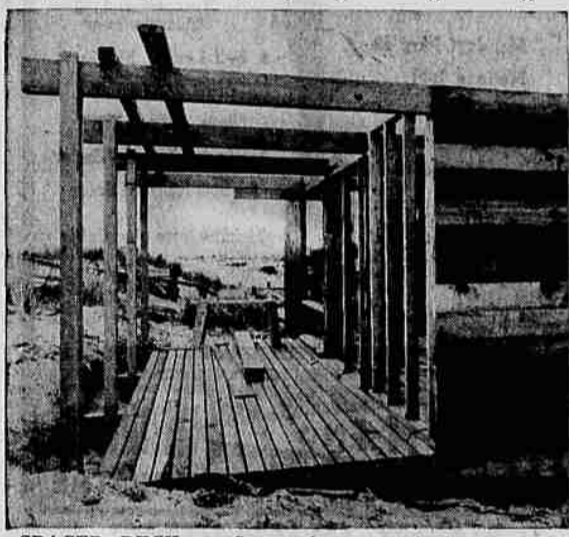
**GRAINED PINE** — Pine panels were left unpainted to enhance rustic effect. Panels are precut, only need to be nailed up as Skinner is doing.

The George Skinner family of Portland, was bitten by the vacation bug awhile back, and its members did something about it. The Skinnners bought a vacation home—through the mail, you might say. The cabin was shipped in its entirety to them: walls, cabinets, roof, electrical lines—all wrapped in sturdy plastic bags. The cabin was transported to the building site on the shores of the Pacific Ocean and assembled by this do-it-yourself family. The cabin they chose is named the Lodgepole Pine, and is made available by the Western Pine Assn., of Portland. The cabin contains 400 compact square feet of living area including living-dining room, kitchen, bath and separate bedroom. Living space is augmented by a roofed sun deck. The cabin is as sturdily built as a permanent home—even to the extent of double wall construction. The cabin kit included pre-cut lumber, pre-assembled window and door units, pre-built cabinets, electrical fixtures, wiring and such appliances as range with oven, refrigerator with freezer, and hot water heater, shower

stall, portable metal fireplace and rough and finish plumbing. The kit cost somewhat more than the piecemeal materials, but the savings in man hours and labor costs can make up for the difference. The Lodgepole Pine kit cost \$3,295 F.O.B. Portland. But since on-the-job labor was greatly reduced, the Skinnners saved in the long run. A skilled professional builder can work more quickly from a kit, since there is a minimum of time lost in gathering materials and co-ordinating the construction. The man-hours required to build a cabin would range from 200 to 250. Labor costs, depending upon the size of the cabin, would range from \$650 to \$900. However, the kits are so complete that a do-it-yourself can get by with a minimum of professional help. Even the wiring and plumbing could be installed by a nonprofessional. Since some of the materials should not be left prey to wind and water, it is essential that the cabin be framed and roofed quickly unless storage space is available.



**COMPLETED CABIN** — The Skinner family's completed cabin provides good vacation shelter at the Oregon Coast. It contains 400 square feet of living area, augmented by sun deck.



**SPACED DECK** — Spaces between planks used for decking holds sand tracking to a minimum.

Most in a Single Year

## 4 Roses Get All-American Awards

By MARK M. TAYLOR  
Four new roses were announced as winners of the 1962 All America awards, the first time so many received the honor in one year. Sharing the rose spotlight were Christian Dior, a hybrid tea rose with bright, crimson flowers overlaid with an iridescent scarlet with large, pointed buds opening to large, double high centered blooms. The plant is tall and stately with a glossy foliage covering the long stems. The flowers have a light, tea-like fragrance. Christian Dior is a Gallic import, coming from France and inheriting many of the qualities of its ancestor, Peace, which also came from France. Golden Slippers, a floribunda with blooms a fluorescent orange and gold, another 1962 winner, achieved its name as a nursery worker whistled the familiar tune while working in the originator's test plot. The plant, neat, sturdy and compact is continually ornamented with the golden blooms and bright green foliage. There is fragrance, too, a sweet, unusual apple orchard fragrance. King's Ransom, a hybrid tea rose with rich chrome yellow petals, non-fading, large, full blooms borne on tall, full compact plants with dense, dark green, glossy foliage, traces its ancestry to Golden Masterpiece

and Lydia, attaining the best qualities of each. King's Ransom is but the fifth All America rose selection in a pure yellow, the first in 12 years. John S. Armstrong, a grandiflora rose of velvety dark red, large blooms of a non-fading new shade upon tall, well branched and fully clothed plants, completes the roster of the 1962 awards. Plants of these 1962 All America award winners will be available from local nurseries for the 1962 rose season. Rose planting time is past now until fall, unless you buy roses that are growing in containers, which can be planted at any time. In planting container grown roses (or any shrubs, for that matter), make certain the soil in the container is moderately moist before transferring the plant from the container to your garden. Split the two opposite sides of the container with tin snips, or stout knife; pull the two sides of the container, then lift out the ball of soil and set it into the prepared planting hole. As rose show time nears, the regular dusting or spraying schedule must continue uninterrupted. However, watch that no residue remains on the foliage or your exhibit will be penalized. When cutting your roses for

exhibition, cut in the evening or early morning, place in cool, deep water and keep in the refrigerator until time to take to the show. Modern pest control manufacturers provide the home gardener with the best of modern insecticides and fungicides combined in a single container for easy, one time use, either in dust or spray formulas. Such combination insecticides-fungicides are available under several different brand names from your nearby garden supply dealer. With such convenience, there is little excuse for one not having quality roses growing in his garden. Rather than hoeing out weeds in your rose beds, use a much of peat, sawdust, buckwheat hulls, ground corn cobs or compost. The mulch will retard weed growth and texturize the soil, whereas in hoeing, you might cut off some feeder roots accidentally. It takes six years of constant observation and evaluation and a heavy investment before rose hybridizers create a new plant worthy of competing for All America honors. Only then is it tested in 24 gardens through the U.S. and studied by the examining board.

There is a big difference in FIBERGLASS PANELS

only **ornyte** with exclusive **HEAT BLOCK**

**STOPS harmful heat rays**

39¢ Sq. Ft.

Degree Difference under our outside test conditions  
NEW ORNYTE Heat Block 89°  
Regular Fiberglass Panels 107°

Now Available

While the supply lasts... B grade Ornyte... only 32¢ Sq. Ft.

**RUSSELL'S MATERIALS**

We Give Green Stamps

3565 Franklin Blvd. PA 6-7633

**WARDS**  
MONTGOMERY WARD

**WARDS**  
Budget - Priced

**COMBINATION DOOR**

Full 1" thick extruded aluminum frame. Complete with two removable glass inserts, all-aluminum screen door closer.

Reg. 39.95

**29<sup>88</sup>**

### Versatile Jackposts

Homeowners are finding adjustable steel jackposts have many uses about the home. They are particularly good when there is doubt about the floor's ability to support a heavy object such as a piano or freezer. In addition to preventing floor sag, their screw adjustment permits a drooping floor to be leveled gradually.

### Horizontal Surface

It's easier to get perfect results when varnishing if the surface is horizontal. Whenever possible, keep turning the furniture that is being finished so that you have a horizontal surface on which to work. Always wait until the coating has dried before turning the piece. Any runs or sags on vertical surfaces should be eliminated with a dry brush before the varnish sets.

### It's Time To Check The Screens

With warm weather and the insect season fast approaching, it is time to inspect your window screens. Are they twisted, warped, split, rusty or unsightly from peeling paint? Will they add to the appearance of your home when you put them up for the summer? And are they heavy and unwieldy to handle? Due to the trash heap and replacement are those whose frames are rotten, split, warped, or paint-peeled or whose insect screening is such that rain water running off will give the house rust or corrosion stains. The home owner facing such window screen needs such problems as where to go for new screens, what kind to order, how to tell quality, what is now? Since window screens vary widely in types and quality, the unwary or inexperienced replacement screen buyer can easily wind up with something that he doesn't want or wishes he didn't have. While the primary purpose of screens is to keep out insects, many factors are to be considered in buying new screens. They include the investment required, whether the screens being considered are impervious to deterioration from weather and proof against rusting the house because of staining or corrosion, whether they are light in weight and compact, their general appearance, whether they can be easily and inexpensively repaired if damaged, and whether they can be easily handled and stored. While screen fabricators offer professional measuring service, the home owner himself can save time and labor costs by measuring double hung wood windows for screens. Measure carefully and precisely with a rigid measuring stick or steel tape dimensions on the outside of the blind stops (the outermost strips of wood attached to the window frame) where the stops join the frame. It is of A-1 importance to tell the fabricator that yours are "full measurements with no allowances or tolerance for slipping the screens into position. A clear, though unprofessional, sketch that indicates the various measurements for each screen would also be helpful.

### Engineers Okay Two Contracts

PORTLAND — Army Engineers have announced award of two contracts totalling \$343,870 for channel clearing work in Oregon. The largest was \$332,800 for dredging 488,000 cubic yards of material from the Rogue River entrance channel and turn basin. The work is to be completed by next December, but no dredging will be permitted in the Aug. 1-Oct. 31 period. The entrance channel will be 13 feet deep and 300 feet wide. The turning basin will be 500 by 650 feet. The other contract was \$11,170 for dragging and snagging in the Willamette River between Corvallis and Portland, and in the Yamhill River from its mouth to the highway bridge upstream from Dayton. The work will be done by Willamette Tug and Barge Co., Portland.

### Excellent Aid

Floor to ceiling draperies, in both homes and apartments, are utilized not only for decorating but as an excellent aid to insure warm rooms during the winter months.

**Corry's**  
KILLS  
SLUGS and SNAILS

The one bait that is perfectly safe to use in the garden. Will not burn tender plants or foliage.

**CONTAINS NO ARSENIC!**  
**ABSOLUTELY NOT AFFECTED BY RAIN OR SPRINKLING**

**BEST of the BAITS!**

Register-Guard, Eugene, Oregon  
Sunday, May 21, 1961 5B

## Woman Loses Court Appeal

A 38-year-old Eugene woman has lost her Lane County Circuit Court appeal of conviction for stealing a 98-cent bottle of sugar substitute. Judge Roland Rodman Wednesday upheld the district court petty larceny conviction of Mrs. Bonnie Mae Cobe, P.O. Box 287, Eugene. Mrs. Cobe was accused of stealing the item from McKay's Big Y Market on Dec. 30, 1960. In both the district and circuit courts the woman claimed that she had placed the bottle of sugar substitute in her pocket and merely forgot to pay for it when she paid for other groceries at the check stand. The store manager, however, testified that he watched Mrs. Cobe purposely place the small bottle in her pocket after looking around to see that she was not being watched. Judge Rodman fined Mrs. Cobe \$75 for the offense.

**YOU do it we show YOU**  
SHOP AND COMPARE  
**THRIFTWAY**  
FLOOR COVERING  
1639 W 4th DL 3-1413

**Switch from HOT . . . to CARRIER**

Escape summer heat in home or office . . . enjoy all the benefits . . .

**AIR CONDITIONING**

Carrier brings you a new concept in summer comfort. Enjoy years of trouble-free cooling service. Economical installation . . . low operation costs. Call for estimates and information.

**PRICE**  
REFRIGERATION CO.  
1555 West 11th Ph. DL 5-6261

**FREE**

**FREE OUTDOOR POSTLIGHT WITH EACH COMPLETE WESTINGHOUSE ELECTRIC BASEBOARD HEATING INSTALLATION**

**Enjoy Custom Comfort**

Westinghouse electric heating that gives you individual temperature control in every room not available with a conventional central heating plant. That means heat where you want it—when you want it—without heating the whole home. No flame, no fuel, no combustion, hazards or noise, no smoke—just safe, clean heat day and night.

**CLEAN - SAFE - QUIET - CONVENIENT . . . AND IT COSTS LESS THAN YOU THINK**

**HAMILTON ELECTRIC**  
232 West 5th Phone DL 5-8713

**BIG CHIEF** ALL PURPOSE LAWN AND GARDEN TRACTOR by Jacobsen

**LOTS MORE FUN TO GET JOBS DONE**

Here's a fully powered tractor that works for you all year 'round, from spring seed bed preparation, mowing, hauling to winter snow plowing. Typical Jacobsen quality throughout, it's designed for your convenience, comfort and safety. Big 7 hp engine, all geared transmission, air cushion riding comfort, finger-ease steering, low center of gravity. Selection of over 20 attachments and accessories, including 36-inch rotary mower, 3 or 5 gang reel mower, 10-inch plow, cart, roller, snow or ball dozer, electric starting (optional, extra). Try out the Chief—you'll be proud to own it.

**Jacobsen BREWER'S INC.**  
DISTRIBUTED BY: Corner 6th & Polk Eugene, Oregon DL 4-1483

**CALL YOUR DEALER LISTED HERE FOR FREE DEMONSTRATION**

In Eugene <b>BREWER'S INC.</b>	In Springfield <b>WRIGHTS</b>	In Cottage Grove <b>WOLFARD EQUIP. CO.</b>
In Oakridge <b>OAKRIDGE BLDRS SUPPLY</b>	In Junction City <b>MILLS MOTOR CO.</b>	In Drain <b>DRAIN CHAIN SAW</b>
In Oakland <b>C &amp; S FEED &amp; SEED CO.</b>	In Harrisburg <b>HURD'S HARDWARE</b>	In Florence <b>WRIGHT'S SAW SHOP</b>