

Population of Monaco, better known as Monte Carlo, is 20,422 permanent residents. This does not include transient devotees of games of chance in the gambling casinos.

## Ballet Company Dances Saturday

"An Evening of Ballet" by the Portland Ballet Company will be presented as a part of the University of Oregon's Festival of Arts Saturday at 8 p.m. at the University Theatre.

The first part of the program is "98," a play upon rhythm. Second part is a "Portrait of Three" by Brahms. After intermission, "The Secret" by Shostakovich will be acted by the company. The fourth part of the program is "Have Fun." This includes Let's Play; Musical Chairs; Follow the Leader; Grand Right and Left; and Everybody Dances.

The performance is free. Tickets are available at the University Theatre box office, the main desk of the Student Union and at the office of Frances Dougherty in the Women's Physical Education building on campus.

# House of Week Plan Makes Novel Use of Split Level

## Home Design Fits a Narrow Lot

By DAVID L. BOWEN  
Of the Associated Press

Here's a house full of surprises. It looks like a ranch from the outside, but it's not. It has some of the qualities of a split level, yet it's not split in the ordinary way.

It defies standard definition while presenting an uncommon amount of glamor in a charming entrance foyer, a dramatically dropped living room, and a spectacular dining dias.

Even more appealing is the construction cost. The house has 1,188 square feet of living area on the upper floors with only a single finished room on the lower level. Under many zoning ordinances, it will fit on a 50-foot lot.

Within this severe space limitation Architect Lester Cohen has concentrated the ingredients of modern living and succeeded in creating an especially luxurious looking formal entertainment area.

**DINING DIAS**  
Major feat of design magic is the unusual dining dias, a peninsula some 11 feet square bounded on three sides by wrought iron railing and overlooks the dropped living room, which is on a level four feet lower.

The foyer is on a level all its own, exactly halfway between the living room and the dining space, with angled steps leading up and down.

There are three bedrooms arranged along the rear of the house. The kitchen has a dinette area. There's a large recreation room overlooking a terrace at the rear of the lower level, plus a front, and excellent utility room with laundry and lavatory, and a one-car garage. Plans call for one full bath and two half-baths — one in the master bedroom and the other in the utility room.

X-98 is almost a perfect square, with a width of 33 feet and depth of 36 feet.

**ADDITIONAL DETAILS**  
The living room features a large front window, a continuous ceiling over living room and dining area with a cathedral effect. In addition to the dining dias, part of the bedroom hall also overlooks the living room, increasing the dramatic effect.

The three bedrooms are on the

same level as the dining dias. Were it not for the dropped living room, the home would qualify as a ranch. The difference between this house and an ordinary split is the fact that only the living room is on the middle level, instead of living room, dining room and kitchen.

### GOOD VENTILATION

Bedrooms are at the back of the house and each has two windows, with two exposures in the corner rooms. The master bedroom is square and has its own lavatory. A full bathroom serves the rest of the rooms and its location makes it unnecessary to have cross traffic on the balcony after the children have gone to their rooms. Main bath has an alcove tub and a trim vanity.

The kitchen is at the front, with two exposures. One of its unusual features is a dumbwaiter which can be used to send garbage down to the garage level for convenient disposal. Two front windows brighten the dinette area. Work counters are in a U-shape, a proven step-saver.

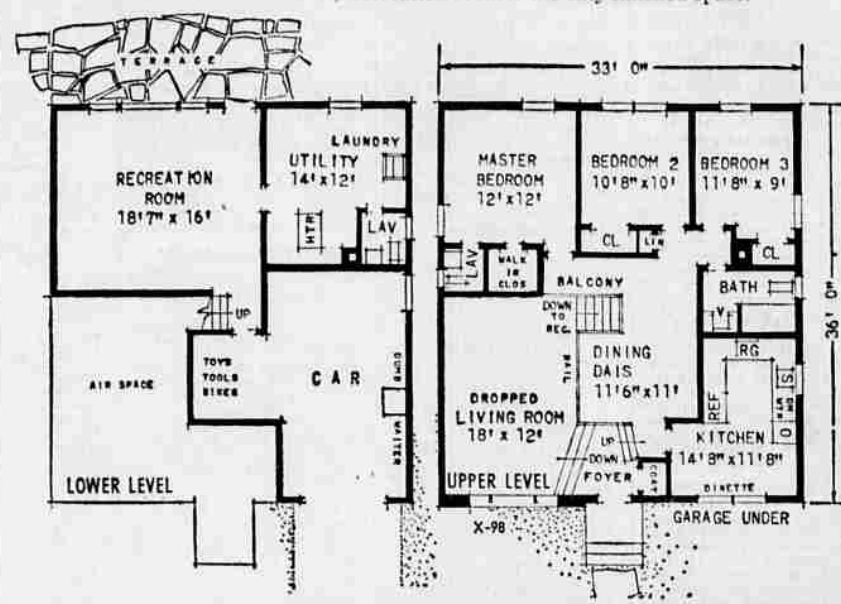
Four big closets serve the bedroom level, including the walk-in for the master bedroom. There's a coat closet in the foyer and a storage alcove in the garage for outdoor gear and play items.

A big, almost square recreation room is the only finished room on the lower level. It has a wall of windows and a door that opens out to a terrace.

Exterior materials are brick and shingle, with an asphalt shingle roof.



**ECONOMY SIZED**—This three-bedroom home makes full and dramatic use of all available space. The habitable area of the upper levels is only 1,188 square feet. In many areas, home could be built on a 50-foot lot. Unusual foyer arrangement, dining dias and living room dropped four feet below main living level provide dramatic distinction. On lower level, recreation room is the only finished space.



**YOU do it we show YOU**  
SHOP AND COMPARE  
**THRIFTWAY FLOOR COVERING**  
1659 W. 6th DI 3-1413

**COLORED ROCK SURFACING**  
For New and Older ROOFS  
Now... beautify your roof with modern rock surfacing  
FREE ESTIMATES  
**T. D. RICH**  
ROOFING CONTRACTORS  
4361 Main, Springfield, RI 0-3878

**HOME OWNERS and BUILDERS**

**ATTENTION!**

We give immediate, specialized service in preparing and paving with asphalt concrete your DRIVEWAYS, ROADS, PATIOS, SIDEWALKS, PLAY and PARKING AREAS and other similar improvements.

Free Estimates on Request

**BYRNES CONSTRUCTION CO.**  
(Formerly The Central Heating Co.)  
Diamond 4-2295 102 High Street

**\$10 A MONTH To RE-ROOF Your Home**

with  
**The New Johns-Manville Seal-O-Matic Asphalt Shingles**  
or built up roofing

Free Estimates No Down Payment All Work Guaranteed

★ Weather Stripping ★ Insulation  
★ Iverson Paints

**Builders Insulating & Roofing Co.**  
Office & Whse. 6th & Charnelton Lester Green, Manager  
DI 3-2543 (Eve.) DI 5-0476  
DI 3-3143

**REDUCED TO CLEAR!**

Aluminum Wall Tile  
REMNANT LOTS

at **40%** off

FOR

- Kitchen splash areas
- Utility Rooms
- Bathrooms

DO IT YOURSELF — WITH OUR TOOLS  
Complete Instructions Given

**DURATILE OF EUGENE**  
837 OLIVE DI 4-1006

Some debts are wrong. This one is right!

**MORTGAGE LOAN**

It's actually smart to own money on a modern Christianson mortgage

by don herold

Here's one debt that is a good investment—a Christianson Company modern mortgage on a home or business structure.

You see, most experts agree inflation is coming, to some extent or another. If that is true, you'll be paying off your mortgage loan with cheaper dollars, and making money with every payment.

And your property may be going up in value every year, also, because of inflation, and because of rising building costs.

If you are ever going to buy or build, DO IT NOW.

- Mortgage Loans—FHA, 30 years, 3% down. Conventional, 25 years.
- Insurance—Fire... Automobile... Bonds.

**M. S. Christianson**  
Mortgage and Investment Co.  
Construction Funds Available

1241 Oak St. DI 5-0305

Mark M. Taylor

## Gardening Worthwhile for Children

By MARK M. TAYLOR

Few people will deny the worth of gardening experiences as a means of education and a source of culture for boys and girls, but fewer still seem to be able to do anything about making such experiences available to their pupils.

Do your boys and girls learn gardening in school? If not, don't you think they should? Do your schools lose the educational, cultural and social values of gardening by omitting it from their programs? If so, do you approve of their omission?

Boys and girls who have never participated in the miracle of creating life by planting dull, dead-looking seeds into the warm, moist soil, have missed an experi-

ence no child should be deprived of. Children who have never thrilled with the pride and satisfaction that accompanies the first harvest of food or beauty resulting from their own efforts, have been cheated of one of life's greatest satisfactions.

Contact with the soil, knowledge of the methods by which it is made to produce, and some slight skill in achieving production, are the fundamentals in the education of every well-rounded and intelligent citizen. Just as at least an elementary understanding and appreciation of music are major factors in the "American way of life," so are the knowledge and appreciation of gardens and gardening associated with good citizenship and culture in America today.

A few generations ago, music was considered a "frill" in education; today it is as unquestioned as the three R's. Too many educators consider gardening a "frill" but it is gradually assuming its rightful place alongside music and some other activities as an essential cultural subject in our school term.

As a phase of science instruction, gardening may be a most valuable means of tying scientific principles to practical life realities.

It has been my privilege to see the results of garden training of school children as practiced by other cities in the country, notable of which is Cleveland, Ohio, where the Cleveland School System has been developing a gardening program for the past 25 years. Practical gardening projects supplement classroom instruction. These are on a voluntary basis, of course, and involve time of the pupils outside of school hours.

Closer at hand is the program undertaken by the Portland high schools, each of which has chosen a school flower and studies its culture and uses. With the aid of the flower societies in Portland, each school sponsors its own flower show featuring the school flower. It has often been said by visitors to one of these exhibits that they would compare well with exhibitions staged by adults. Most of the students, of course, grow the flowers at home as well as at the school, in itself a worthwhile civic beautification project.

## ROTC Plans Study Change

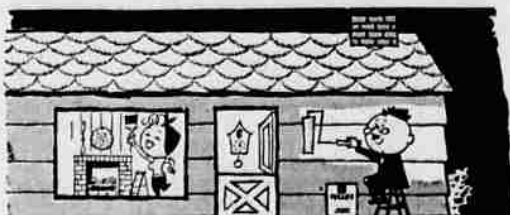
A new course of studies within the college Reserve Officers' Training Corps program has been announced by Secretary of the Army Brucker.

Beginning with the school year 1960-61, advanced ROTC cadets will take about 20 per cent of their military instruction in university-taught subjects, such as science, psychology, communications and political institutions. To permit the change, military

subjects, such as crew served weapons instruction, will be taught during the six-week summer camp period, normally attended during the junior and senior college years.

The Army anticipates that the new program will: stimulate increased intellectual attainment of the part of the ROTC students; lessen the training load on students, particularly those pursuing technical degrees; and make the overall program more attractive.

## NOW IS THE TIME!



The perfect time for you to paint... with Fuller, the perfect paints!

**INSIDE**... Only 3 1/2 hours to paint an average room with Fuller Interior Latex. No painty odor!

Kitchens, baths are a cinch with Fuller Semi-Gloss Interior Enamel. Zips on... dries fast... cleans up in detergent and water.

**OR OUTSIDE!**... You get 2 extra years of paint beauty with revolutionary new Fuller House Paint! Slides on quickly, roller or brush.

**NEWEST WALLPAPER PATTERNS** for every room. Pre-trimmed, plastic-coated. Many pre-pasted.

**FULLER**  
PAINT • GLASS STORES  
265 W. 8th Ave., Eugene  
(between Lincoln & Charnelton) DI 2-1148

FREE PARKING Across Street In Our Lot

Be modern with **MOEN**

NEW SINGLE HANDLE FAUCET

**LOOK!**

IN YOUR KITCHEN

ALSO FOR LAVATORY AND SHOWER

Godlove The Plumber  
31 E. 7th DI 4-8421  
Eugene, Oregon

**LOOK!**

**METAL WALL TILE**  
Closeout to make room for new stocks of ceramic tile.  
SAVE 20% TO 60%  
Some Colors Reg. 10c... 4c  
● Enameled ● Solid Copper ● Stainless Steel

**CROWN TILE**  
2640 River Road DI 5-2617  
(at Santa Clara)

**NEW LIGHT FIXTURES**

**Brighten Up**

YOUR HOME

Visit our showroom soon—  
See our large display of lighting fixtures featuring today's newest idea.

**Clarke Electric Co.**  
Call for Evening Appointments  
DI 5-3231 233 West 7th DI 5-7319



**Pre-fab GARAGE**

12' X 20' unassembled and delivered to your home

No Down Payment Only **\$14.64** Per Month

2 men can assemble garage in one day

1768 WEST 6th  
PHONE DI 5-3366

**Ornamental IRON**

For Year 'Round Beauty and Safety

**PRE-KUT**

NO MONEY DOWN UP TO 5 YRS. TO PAY

**McDANIEL LUMBER CO.**  
240 River Rd. DI 5-3385

**WE CAN SUPPLY YOUR Glass needs**

**RESIDENTIAL**

or **COMMERCIAL**

**MIDGLEYS**  
4th & HIGH

... Make Extra Dollars with

**\* ELEPHANT BRAND FERTILIZERS**

**LPG**

\* LOWER PRODUCTION COST per unit

... because each bushel, ton, crate or bale of crop costs you less to grow. Elephant Brand fertilizers give you L.P.C. — Lower Production Cost per unit and extra profit.

Your Elephant Brand dealer is the man to see. His knowledge and advice will be really valuable to you. Contact him soon.

IT PAYS TO CHOOSE FROM THE ELEPHANT BRAND LINE

11-48-0	13-39-0	16-48-0	16-20-0	23-23-0	24-20-0
27-14-0	8-32-16	10-30-10	13-13-13	14-14-7	
NITRAPRILLS (Ammonium Nitrate)		AMMONIUM SULPHATE		TRIPLE SUPER PHOSPHATE	

**Elephant Brand**  
water soluble FERTILIZERS

EXCLUSIVE U.S. SALES AGENT FOR ELEPHANT BRAND FERTILIZERS: BALFOUR GUTHRIE & CO., LIMITED. SAN FRANCISCO • LOS ANGELES • SEATTLE • PORTLAND • SPOKANE • MINNEAPOLIS