

WHY SETTLE FOR LESS THAN THE BEST?

HERE'S PROOF THAT SAFEWAY'S FINE MEATS COST NO MORE THAN ORDINARY MEATS

COUPONS ARE CASH AT SAFEWAY
We will redeem ALL coupons issued by the manufacturer or food retailers with same or like value merchandise up to the amount of purchase.

Safeway starts with the best — nothing less than "USDA CHOICE" grade beef and lamb—just the top grades, too, of pork, calf, and veal. Then Safeway makes this fine beef and lamb even better by its own scientific "aging" process which brings out peak flavor and tenderness. And, finally, before he weighs your purchase, your Safeway meat man trims off all excess bone, fat and waste to save money for you. Comparison proves—pound for pound, you get MORE good-eating meat for your money at your Safeway store.

Safeway's unconditional guarantee, on every cut of meat Safeway sells means just this: Buy ANY cut of meat at ANY Safeway store. Cook it by your favorite method. Eat it. If, for any reason, whatsoever, you are not pleased 100%, tell your Safeway meat man. He'll give back every penny you paid for the meat without fuss or quibble. You do not have to return any portion of your purchase. This guarantee is in keeping with our continuing desire to provide the finest meats in town for your table. So, why settle for less than the best. Be sure—with guaranteed meats from SAFEWAY!

GENUINE 1955 SPRING LAMB

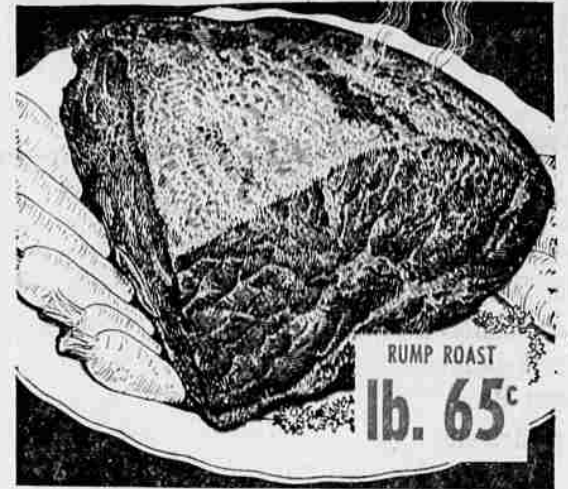


LEG OF LAMB
lb. 75^c

Time again to enjoy the wonderful goodness of spring lamb—the meat that's famous for rich, full flavor and delicate texture. It's featured this week at Safeway—Spring Lamb at its very best. You see, we sell only "USDA CHOICE" grade—and we prepare this fine meat for market with special care so it reaches you at its peak of tenderness and flavor.

- Small Loin Chops Choice Center Cut lb. 95^c
- Rib Lamb Chops USDA Choice Lamb lb. 75^c
- Shoulder Roast Choice Square Cut lb. 49^c
- Breast of Lamb Choice Lamb For Stew lb. 19^c

TENDER-JUICY CALF VALUES



RUMP ROAST
lb. 65^c

Enjoy Calf from Safeway to your heart's content. In one bite you'll discover that here is Calf at its very best! And all cuts are from top USDA grades of Calf—pre-trimmed, of course, so you pay for no excess fat or bone. It's perfect eating calf—tender, juicy, flavorful.

- Small Loin Chops Tender Center Cut lb. 85^c
- Shoulder Roast Meaty Blade Cut lb. 49^c
- Shoulder Roast Tender Arm Cut lb. 55^c
- Breast of Veal Wonderful For Stew lb. 19^c



"USDA CHOICE" STEER BEEF

SHORT RIBS lb. 15^c

- Boiling Beef "USDA Choice Plate Cut Try an old-fashioned stew" lb. 15^c
- Beef Pot Roast USDA Choice Arm Cut, lb. 59^c Blade Cut, lb. 45^c
- Beef Round Steak USDA Choice Beef Aged for flavor lb. 79^c
- Standing Rib Roast USDA Choice Tender lb. 69^c
- 100% Pure Ground Beef Fresh Daily lb. 39^c

SMOKED PICNICS

These are fancy, sugar-cured pork shoulders with the shanks cut short to give you a maximum of meat and a minimum of waste. You'll enjoy the wonderful ham-like flavor. Delicious served hot or cold.

lb. 45^c



SLICED BACON

Sugar Cured Standard Pack lb. 49^c

COTTAGE BUTTS

Boneless Smoked 1 1/2-2 1/2 lbs. Cello Pack lb. 89^c

BACON SQUARES

Real Smoked Flavor Excellent for Seasoning lb. 33^c

SALT PORK

Wonderful for Flavor Economical Seasoner lb. 39^c

POULTRY

- Whole Fryers Fresh Drawn lb. 59^c
- Fresh Fryers Cut-up Pan-ready lb. 65^c
- Fresh Fowl Cleaned, Cut-up lb. 55^c
- Frozen Fryers Major House lb. 65^c

SEA FOODS

- Fillet of Sole Captain's Choice 1-lb. Pkg. 55^c
- Fillet of Cod Captain's Choice 1-lb. Pkg. 39^c
- Fillet of Perch Captain's Choice 1-lb. Pkg. 39^c
- Halibut Steak Captain's Choice lb. 55^c

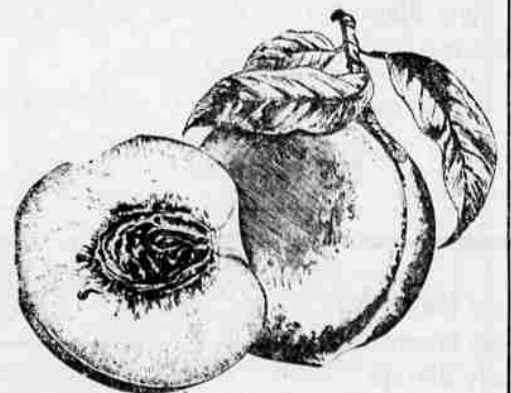
SAFEWAY GARDEN-FRESH PRODUCE

Tree-ripened, Hi-colored, California Elberta Freestone

PEACHES

Safeway peach experts have selected the pick of the California crop especially for you. Each of our golden-yellow Elbertas (Freestones) has ripened on the tree to full developed sweet flavor. Each is crammed with juice, solid-fleshed, unblemished. For canning, for fresh eating — you can't do better than these top-quality Elbertas.

lb. 17^c



21-Pound Lug 2.98

WATERMELON

Red Ripe Sweet Meated Whole Melons lb. 5^c
By the piece 5 1/2^c

Green Beans Local Wanderers lb. 2/35^c

Pineapple Fresh Hawaiian Sugar-Sweet lb. 15^c

Head Lettuce Crisp Heads lb. 10^c

Cucumbers For Summer Salads lb. 15^c

Juicy Lemons Famous Sunkist lb. 19^c

Nectarines Flavor Packed From California lb. 35^c

Yellow Apples New Crop Transparent lb. 19^c

Fancy Bananas Fully Ripe lb. 19^c

New Potatoes No. 1 Premium 10-lb. Bag 55^c

New Potatoes Select Premium lb. 18/79^c

Sweetest Value in Town CANTALOUPE lb. 13^c

Northwest Moorpark APRICOTS 12-pound flat 1.59 lb. 15^c

Sweet Tender Golden Kernels FRESH CORN 6 ears 39^c

Famous Thompson Variety SEEDLESS GRAPES lb. 29^c

