



IS THAT SO! A Nature Quiz for the Outdoor Whiz

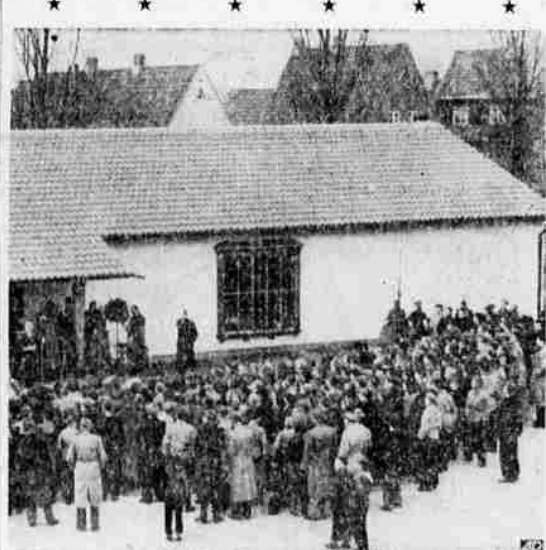
By EUGENE BURNS
A nature quiz: Get all 7 right and you are an outdoor expert; 6 is excellent; 5 mighty good; 4 fair to middling. Answers follow questions.



(D) are correct. Once a deer passes its prime, its antlers have fewer tines, until it may return to the forked stage. The rattlesnake may shed its skin several times a year, each time adding a new rattle. A fir's age can be told accurately by its growth rings. Likewise, a technician can study the salmon's scales and by its growth rings tell its age accurately.

High School Boys Build School

By MANFRED HENTSCHEL
SOLTAU, Germany—For more than six months there were no lessons in drawing and design in Soltau's secondary school — instead, the pupils constructed an additional school building.



DO IT YOURSELF—When high school boys in Soltau, Germany, needed a school building they built it themselves—under the direction of an art teacher. Here is the result at the opening of the new structure.

Pan American Link Speeded By Guatemala

By ROBERT PRESCOTT
GUATEMALA CITY (AP)—President Carlos Castillo Armas has launched a vast road-building program designed to open the long-blocked Pan American Highway within a year and erase "unknown territory" from the Guatemalan map.

Healthful Refreshing Delicious and so inexpensive Wrigley's Spearmint Chewing Gum

Qs and As

Q—Do snakes always swallow their prey head first?
A—When snakes first seize their prey they grab any part of the body, but generally, although not always, they swallow it head foremost.

Completion of the highway will make it possible for tourists to drive from Alaska to Costa Rica as early as next year and eventually to Panama to reach the South American section of the projected continent-linking automobile artery.

