



**PENNY-WISE PRICES**

**FOR DOLLAR-WISE BUDGETING**

**BIG Y MARKETS**

**BIG Y Brand Sweet Cream BUTTER** REMEMBER IT'S REAL SWEET CREAM BUTTER **59¢** LB.

**BIG Y BRAND DOUBLE AA LARGE EGGS** REMEMBER IT'S REAL SWEET CREAM BUTTER **59¢** LB.

FOR THE GREEN BROWN CARTON YOU BE SURE OF THE QUALITY FARM FRESH ANY TIME



**BIG Y EGGS** DOUBLE A GRADE LARGE **43¢** DOZ.

**Raccoon Cap** only \$1.00 **Niblets Corn** NEW PROCESS CAN **19¢**  
**GREEN GIANT PEAS** CAN **19¢**

**BISQUICK** LARGE 40 oz. PKG. **29¢**

**MARGARINE** HOLIDAY BRAND LB. **19¢**

**DASH DOG FOOD** 16-oz. CANS 2 CANS **21¢**

**Pure Champ Dog Food** 4 LB. BAG **49¢**

**Campbells Tomato Soup** 10 1/2 oz. CAN 3 CANS **25¢**

**Heinz Tomato Ketchup** 14 oz. Bottles 2 FOR **39¢**

**Kraft Velveeta Cheese** 2 LB. LOAF **69¢**

**Borden's Mayonnaise** QUART JAR **59¢**

**Baker Chocolate Chips** 6-OZ. PKGS. 2 FOR **39¢**

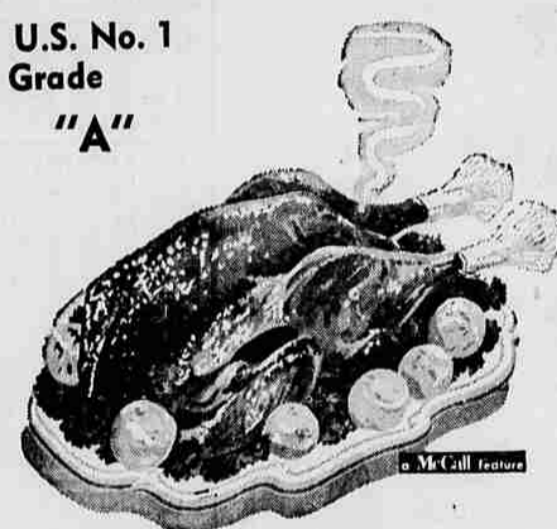
**Carnation Corn Flakes** 12 oz. PKGS. 2 PKGS. **25¢**

**MISSION BRAND PEAS** 303 CANS **10¢**

**BUMBLE BEE BRAND TUNA CHUNK STYLE** NO. 1/2 CANS **25¢**

**SEAL IN BRAND PEACHES FREESTONE 2 1/2-SIZE CANS** CAN **23¢**

**GIANT SIZE BREEZE DETERGENT** PKG. **49¢**



**JUNIOR TURKEYS** 4 to 8 LBS. EVISCERATED—READY FOR THE PAN **Pound 59¢**

**BEEF ROAST** U.S. CHOICE or U.S. GOOD BLADE CUTS **49¢** LB.

**PORK CHOPS** LIGHT LEAN RIB or LOIN **49¢** LB.

**GROUND BEEF** FRESH GROUND VERY LEAN **39¢** LB.

**SLICED BACON** EASTERN RINDLESS Hormel Budget Pack **49¢** LB.

**FRESH PACIFIC OYSTERS** LARGE WHOLE PINT **59¢**

**FRESH FROZEN SHRIMP** LARGE SWEET LB. **89¢**

**FRESH FRUITS and VEGETABLES**  
**FRESH CORN** LOCAL DOZ. **39¢**  
**NEW YAMS** MEDIUM SIZE 5 LBS. **29¢**  
**CRANBERRIES** FANCY OREGON 2 LBS. **49¢**  
**SWEET ORANGES** 5 LB. BAG **59¢**  
**GRAPEFRUIT** ARIZONA WHITE 8 LB. BAG **59¢**

We Reserve the Right to Limit Quantities  
**Ad Prices**  
 Also Effective At The Little Big Y  
 19th and Jefferson



Always a Place to Park

**MEET YOUR Candidate AT THE Candidates FAIR**  
 VETERANS MEMORIAL BUILDING  
 FRI., Oct. 22 8 P.M.